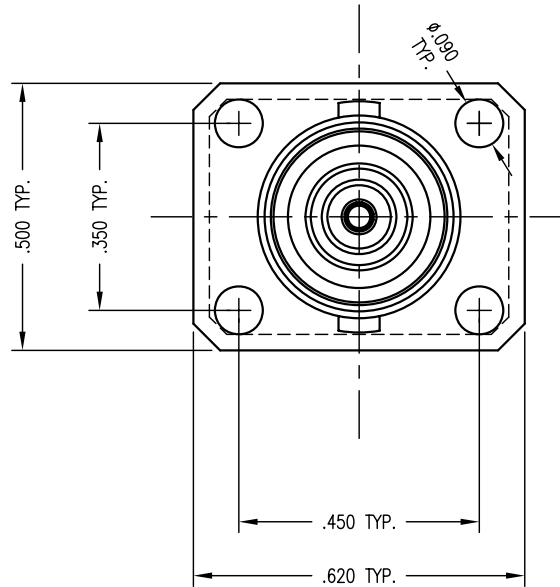
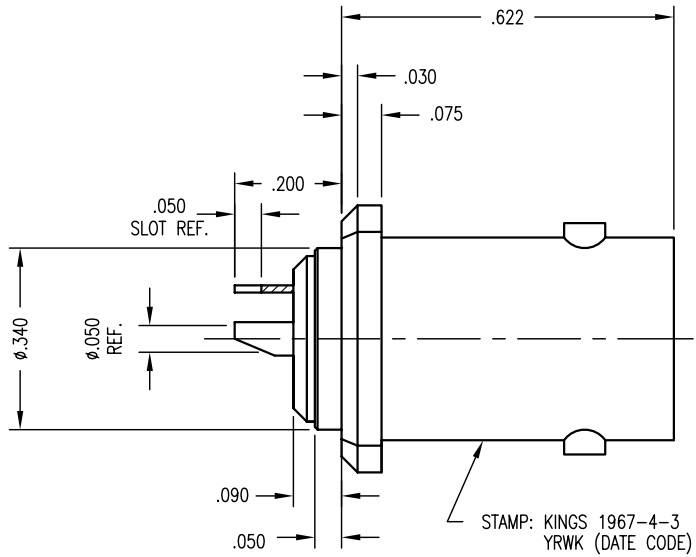


DASH NO.	M CODE	MADE FROM
----------	--------	-----------



NOTES:

- MATERIALS:  
INSULATORS: TEFLON, ASTM-D-4894  
CENTER CONTACT: BER. COPPER, ASTM-B-196  
BODY: STAINLESS STEEL, SAE-AMS-QQ-S-763
- FINISHES:  
CENTER CONTACT: HARD GOLD PLATE, PER ASTM-B488  
INTER. CONTACT: GOLD PLATE, ASTM B488
- ELECTRICAL CHARACTERISTICS:  
WORKING VOLTAGE: 400 VRMS  
FREQUENCY RANGE: DC TO 500 MHZ.
- INTERFACE PER MIL-STD-348, FIG. 201-2 (AS APPLICABLE).

SD1967-4-3

REVISIONS	
ISSUE	CHANGES
3	ER 39826 DCT 3/7/7
4	CN 39854 A DCT 3/22/7
F	REVISED PER ER20073 GGR 11/09/2009

CUSTOMER SALES DRAWING

SCALE	4:1
APPROX SURFACE AREA	
USED ON	
REF:	EQR1120
RECEPTACLE, PANEL TRB	
DRAWN DCT	DATE 12/12/6
DESIGN DCT	DATE 12/12/6
APPR.	DATE
<b>KINGS</b> by WINCHESTER	Winchester Electronics 62 Barnes Industrial Road North Wallingford, CT 06492

SD1967-4-3