

New Jersey Semi-Conductor Products, Inc.

20 STERN AVE.
 SPRINGFIELD, NEW JERSEY 07081
 U.S.A.

TELEPHONE: (973) 376-292
 (212) 227-600
 FAX: (973) 376-896

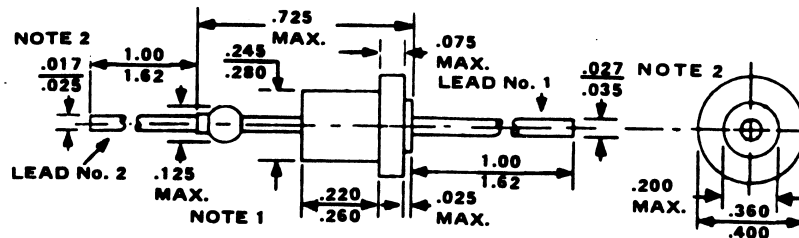
PARAMETERS

1N1521A
 REF/REG DIODE, P(D) = 1W

Description: Ref/Reg Diode, P(D) = 1W

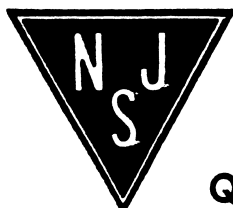
Manufacturer.....	
Mil/High-Rel? (Y/N).....	
Nom. Ref. Volt.....	6.8
Test Current.....	30m
Tol. (%).....	5
PD Max. (W).....	1.0
Dyn. Zmax (j).....	4.2
Temp Coef pp/10k.....	5.0
Oper. Temp (x°C) Max.....	200
Pkg Style.....	DO-3
Surface Mounted (Y/N).....	N

Storage Temperature 2 It(rms)



NOTES:

1. DIMENSION TO ALLOW FOR PINCH OR SEAL DEFORMATION ANYWHERE ALONG TUBULATION (OPTIONAL).
2. DIAMETER TO BE CONTROLLED FROM FREE END OF LEAD TO WITHIN .188" (4.78 MM) FROM THE POINT OF ATTACHMENT TO THE BODY. WITHIN THE .188" (4.78 MM) DIMENSION, THE DIAMETER MAY VARY TO ALLOW FOR LEAD FINISHES AND IRREGULARITIES.



Quality Semi-Conductors