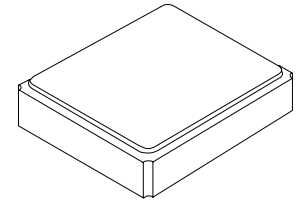




XTL1030

24.305 MHz Crystal Unit



SM3225-4 Case

- High Performance Crystal for Wide Temperature Applications
- Excellent Frequency Stability and Reliability
- Ultra-miniature Surface Mount Seam Weld Package
- Complies with Directive 2002/95/EC (RoHS)

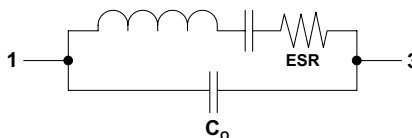


The XTL1030 is a high stability 24.305 MHz crystal suitable for TPMS and other wide temperature range applications.

Electrical Characteristics

Characteristic	Sym	Notes	Minimum	Typical	Maximum	Units
Nominal Frequency	F_O			24.305		MHz
Mode of Oscillation			Fundamental			
Storage Temperature Range			-40		+125	°C
Operating Temperature Range			-40		+125	°C
Frequency Stability over Operating Temperature Range			±50 ppm (referred to the value at 25 °C)			
Frequency Make Tolerance	F_L		±30 ppm @ 25 °C ±3 °C			
Equivalent Series Resistance	ESR				110	Ω
Motional Capacitance	C_M			3.0		fF
Shunt Capacitance	C_O			1.5		pF
Nominal Drive Level					50	μW
Load Capacitance	C_L			7		pF
Aging			±10 ppm/10 year			
Insulation Resistance			500			MΩ
Standard Shipping Quantity on 178 mm (7") Reel				3000		units
Lid Symbolization			1030 YWWS			

Crystal Equivalent Circuit



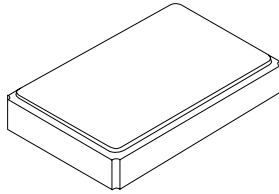
CAUTION: Electrostatic Sensitive Device. Observe precautions for handling.

Notes:

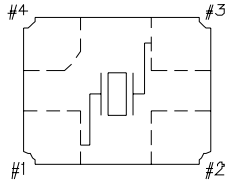
1. US and international patents may apply.
2. The design, manufacturing process, and specifications of this device are subject to change without notice.
3. RFM, stylized RFM logo, and RF Monolithics, Inc. are registered trademarks of RF Monolithics, Inc.

4-Terminal Surface-Mount Seam Weld Case

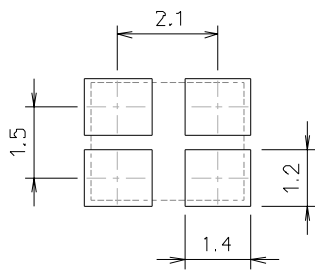
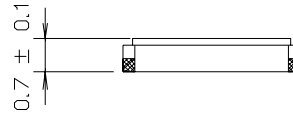
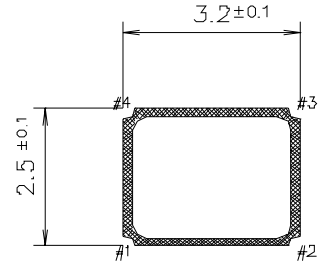
3.2 x 2.5 mm Nominal Footprint



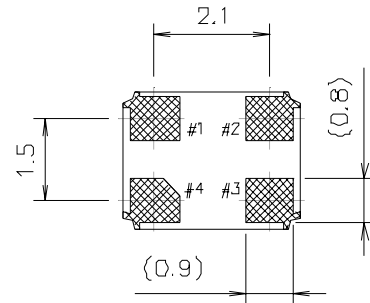
Internal Connections
{Top View}



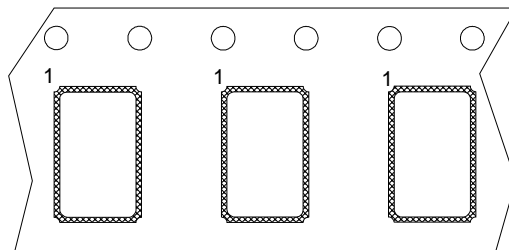
#2, #4 is connected with a cover



PCB Footprint (mm)

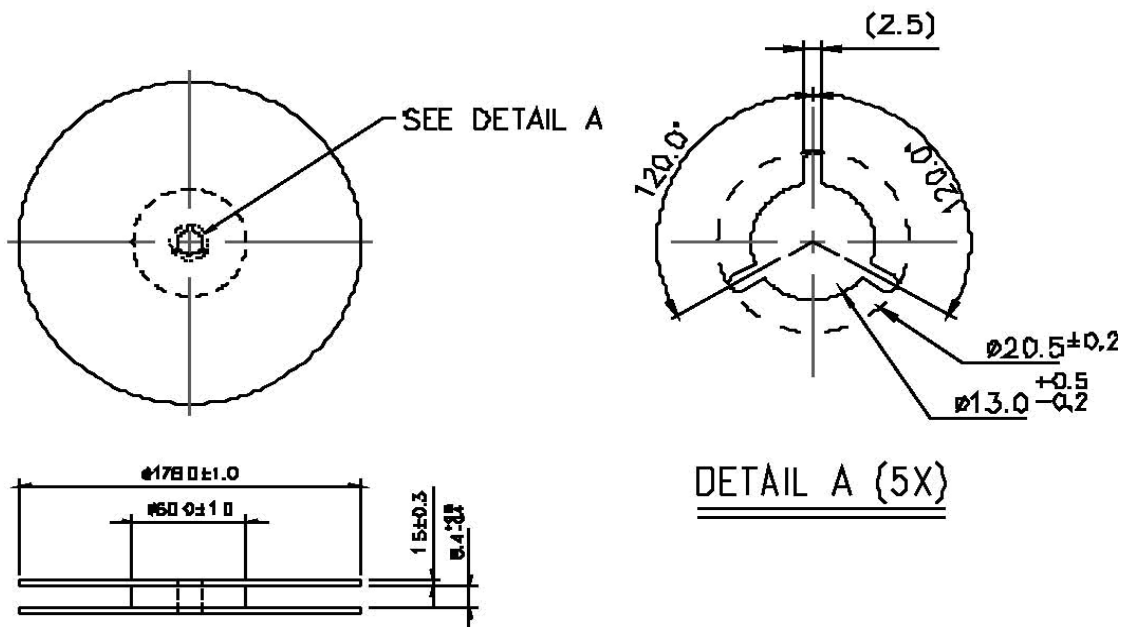


Package Dimensions

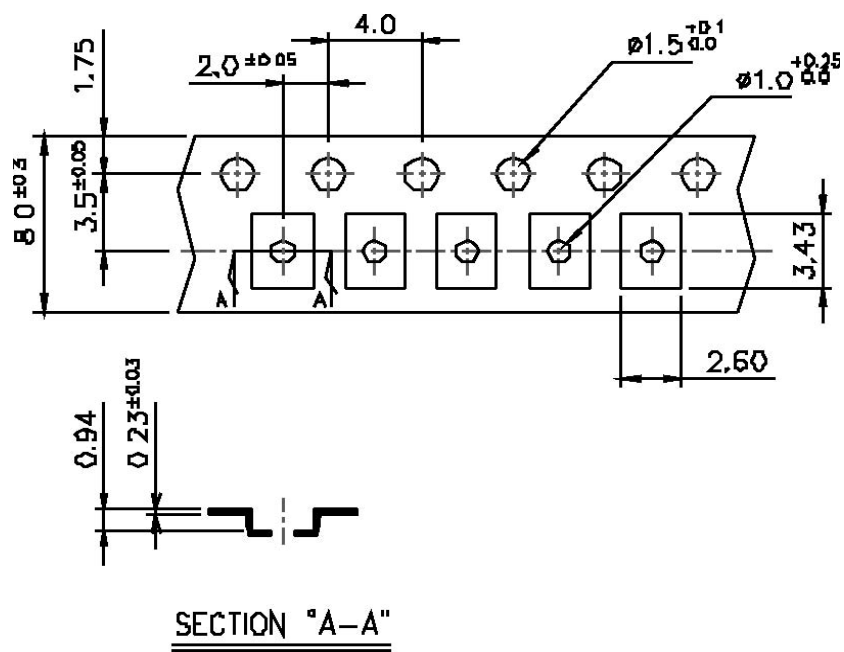


Package Orientation in Carrier Tape

Reel Dimensions



Tape Dimensions



Typical Solder Reflow Profile

