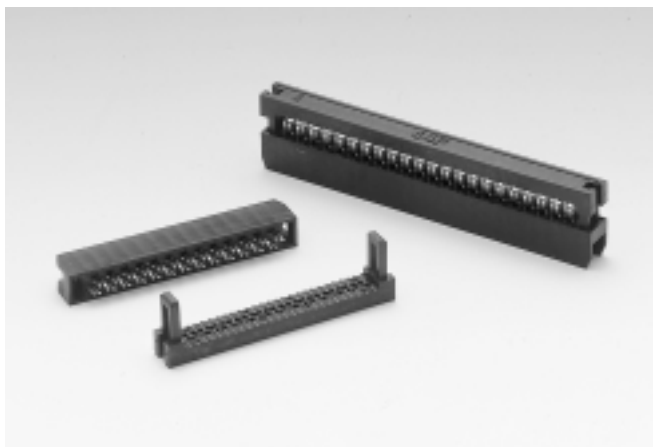


# 2.0mm DUAL ROW SOCKET I.D.C TYPE



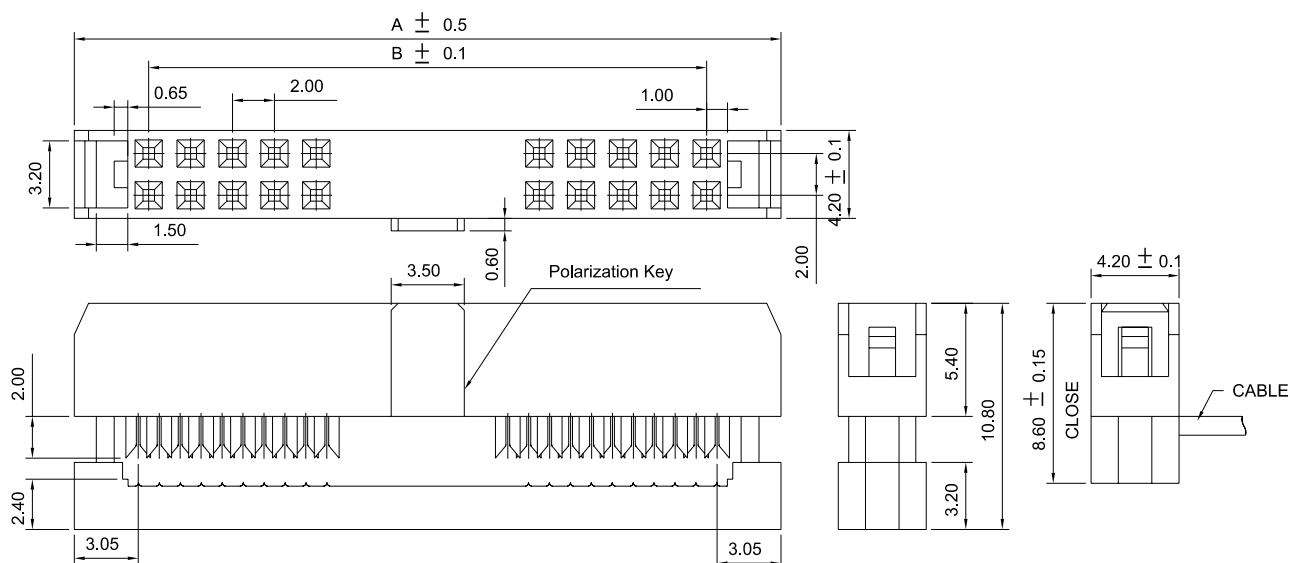
## 200248FI Series

Mates With SUYIN 200112, 200113, 200114, 200116, 200170 Series

### Specifications:

- 8-60 Circuits
- Insulator Material : Black P.B.T Plastic
- Max Processing Temp. : -20°C to +105°C
- Terminal Material : Pho. bronze
- Plating : Contact-Selective Gold Plated
- Max. Current Rating : 1.5A
- Voltage Rating : 150V AC
- Dielectric Strength : 500V (Min. 60 Seconds)

2.0  
mm



## Order Information

200248FI□□□□□□ZU  
1 2 3 6 45

1. 'I' : IDC Type
2. No. of Pins
3. Plating
4. Color 'Z' : Black
5. Package  
'U' : Tube Package Without CAP
6. Polarization key

SUYIN P/NO.	Polarization key
200248FI□□□□□00ZU	Without
200248FI□□□□□01ZU	Yes

## Dimensional Information

SUYIN P/NO.	DIM.A	DIM.B
200248FI008□□□□ZU	15.1	8.0
200248FI010□□□□ZU	17.1	10.0
200248FI014□□□□ZU	19.1	12.0
200248FI016□□□□ZU	21.1	14.0
200248FI020□□□□ZU	25.1	18.0
200248FI024□□□□ZU	29.1	22.0
200248FI026□□□□ZU	31.1	24.0
200248FI030□□□□ZU	35.1	28.0
200248FI032□□□□ZU	37.1	30.0
200248FI034□□□□ZU	39.1	32.0
200248FI036□□□□ZU	41.1	34.0
200248FI040□□□□ZU	45.1	38.0
200248FI044□□□□ZU	49.1	42.0
200248FI050□□□□ZU	55.1	48.0
200248FI060□□□□ZU	65.1	58.0
200248FI068□□□□ZU	73.1	66.0

Reference Page 11