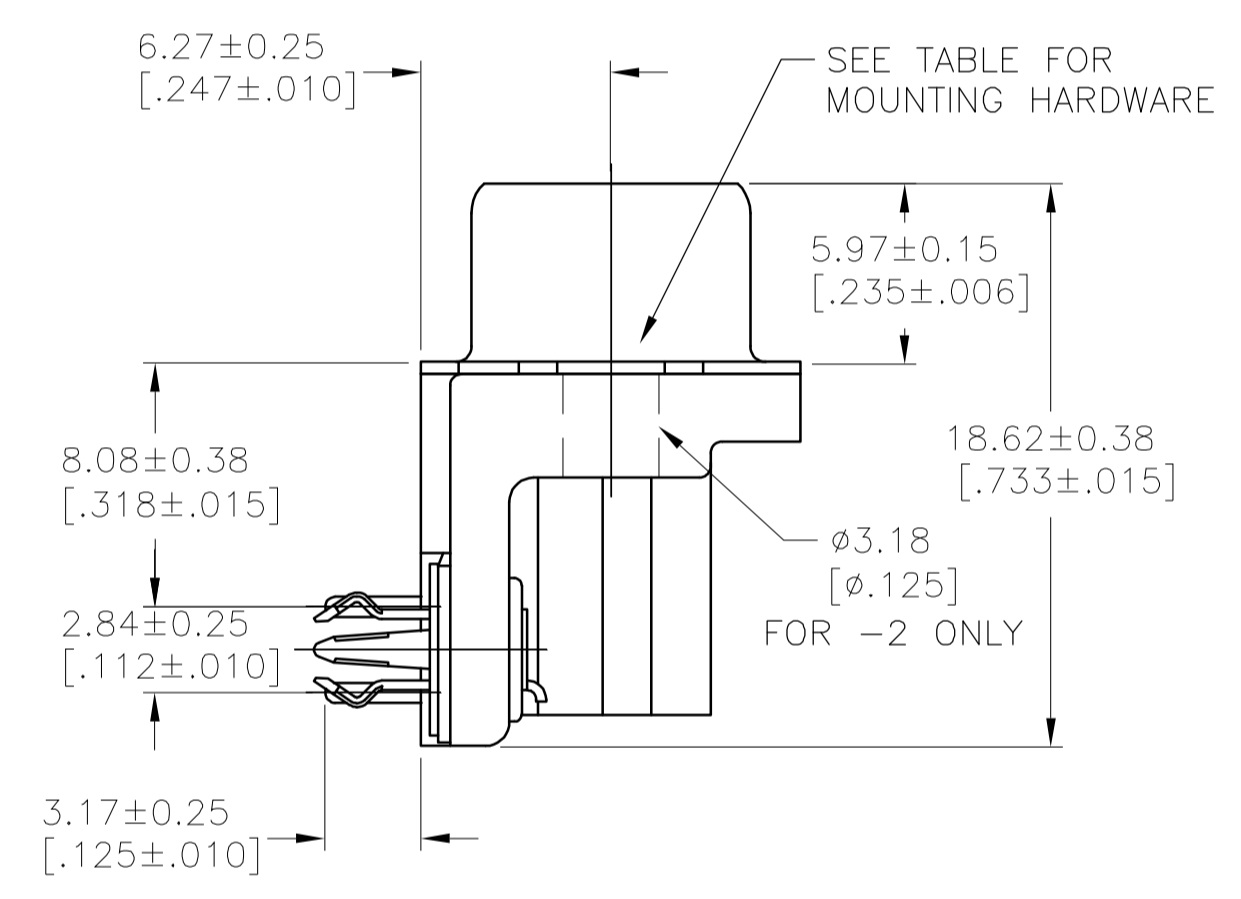
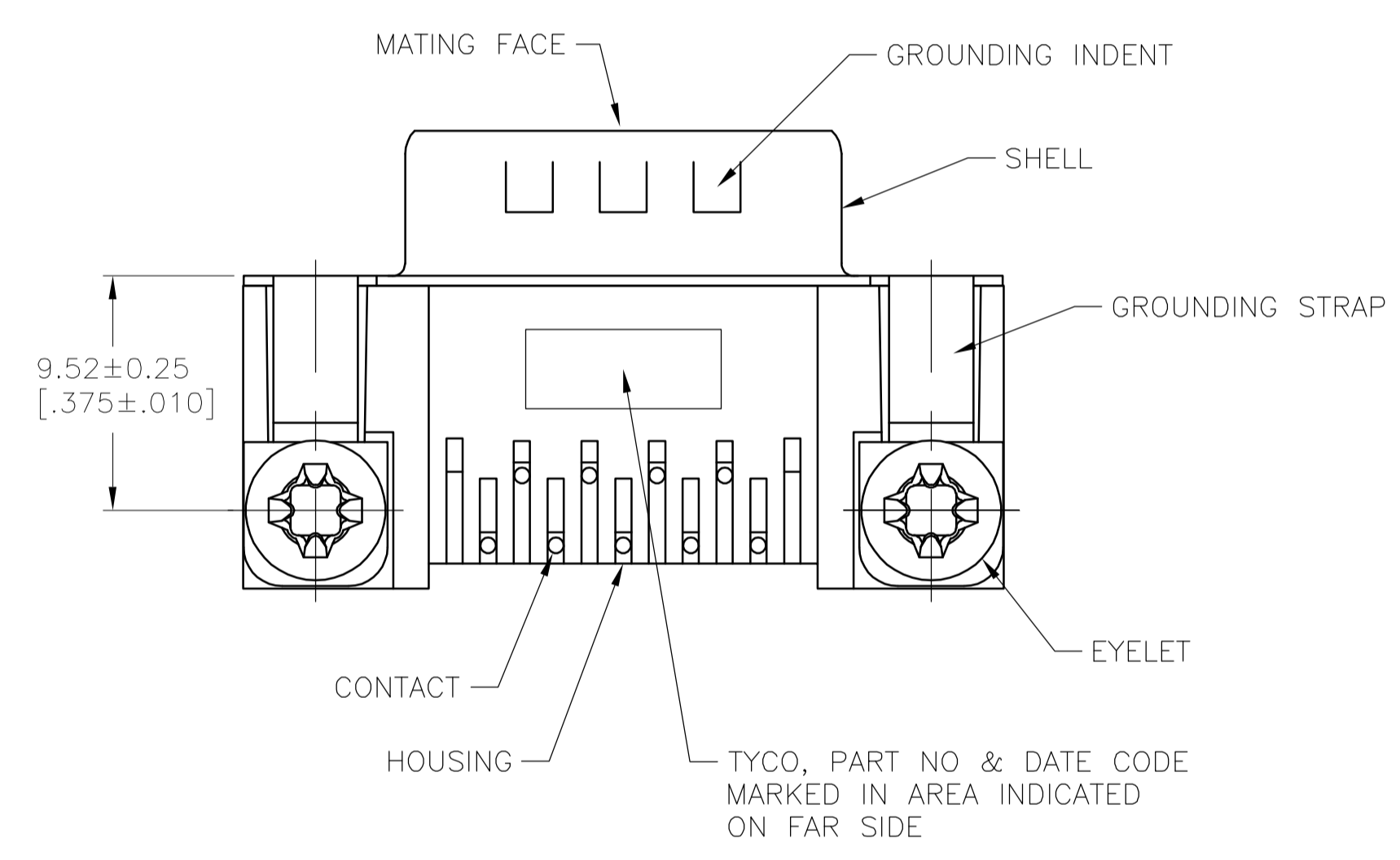
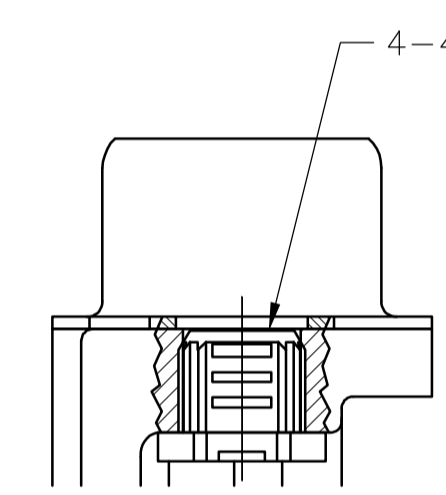


FOR -5 & -6 ONLY

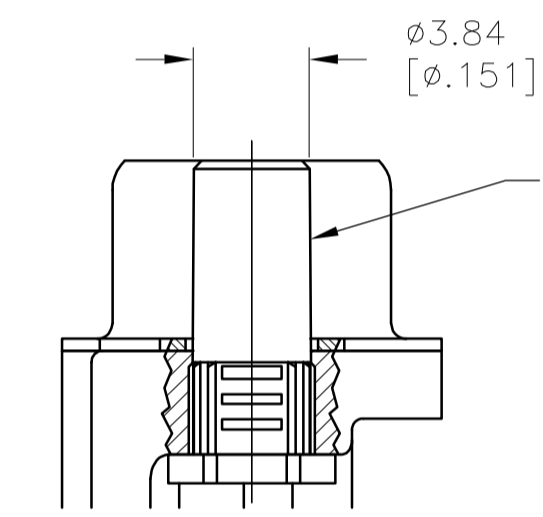
- △ HOUSING: NYLON OR POLYESTER, FLAME RETARDANT, 94V-0 RATED, COLOR BLACK.
SHELL: CARBON STEEL.
CONTACTS: BRASS.
EYELETS: BRASS.
BOARDLOCKS: COPPER ALLOY.
INSERTS: ZINC.
SCREWLOCKS: ZINC.
- △ SHELL: .00254 [.000100] MIN TIN OVER .00127 [.000050] MIN COPPER.
CONTACTS: SEE TABLE.
EYELETS: .00508 [.000200] MIN TIN OVER COPPER FLASH.
BOARDLOCKS: .00508 [.000200] MIN TIN OVER .00127 [.000050] MIN NICKEL.
INSERTS: CLEAR CHROMATE.
SCREWLOCKS: CLEAR CHROMATE.
- △ .00076 [.000030] MIN GOLD ON MATING END, .00254 [.000100] MIN TIN ON SOLDER END, ALL OVER .00127 [.000050] MIN NICKEL.
-OR-
GOLD FLASH OVER .00076 [.000030] MIN PALLADIUM NICKEL ON MATING END, .00254 [.000100] MIN TIN ON SOLDER END, ALL OVER .00127 [.000050] MIN NICKEL.
- △ GOLD FLASH ON MATING END, .00254 [.000100] MIN TIN ON SOLDER END, ALL OVER .00127 [.000050] MIN NICKEL.



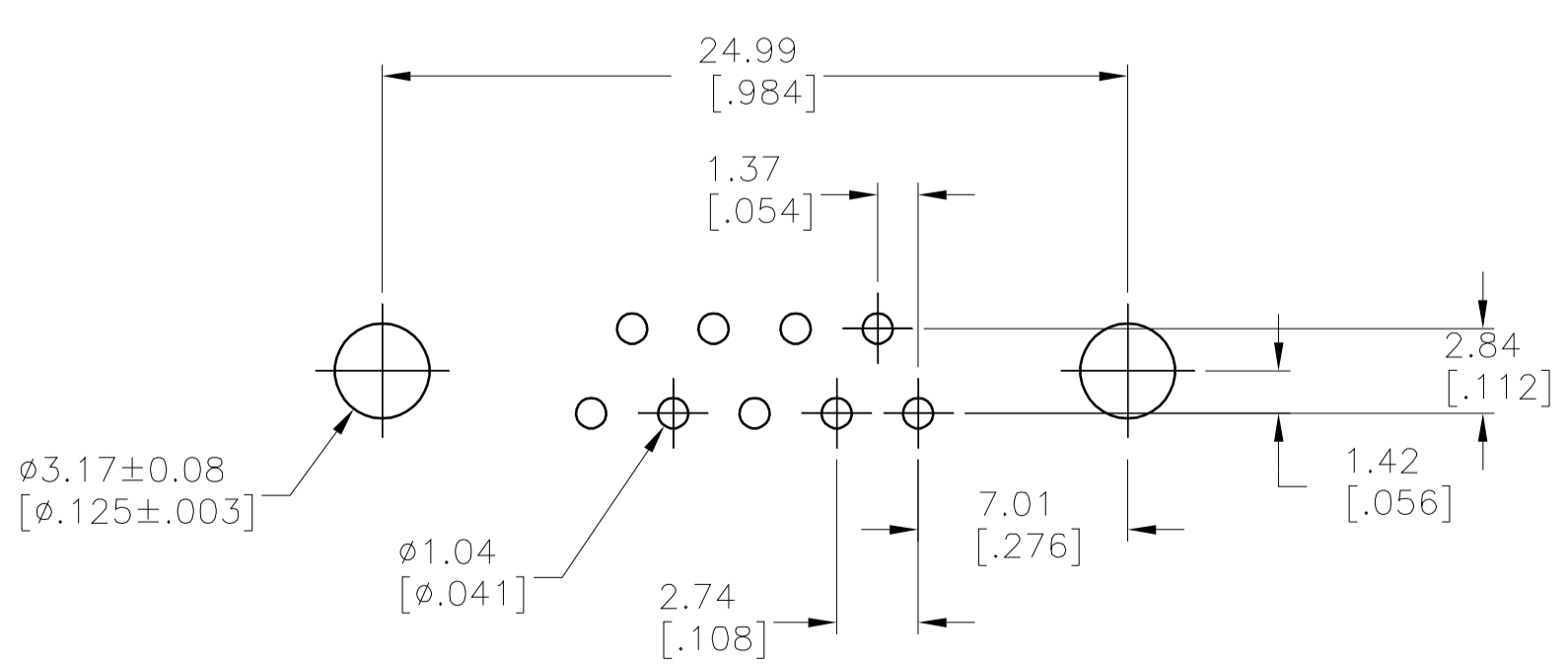
FOR -2 ONLY



DETAIL A



DETAIL B



RECOMMENDED PC BOARD LAYOUT
 1.57[.062] PC BOARD
 (VIEWED FROM CONNECTOR SIDE)

**COPYRIGHT 2005
 TYCO ELECTRONICS CORP
 ALL RIGHTS RESERVED**

△	SEE DETAIL B	5747840-6
△	SEE DETAIL B	5747840-5
△	SEE DETAIL A	5747840-4
△	SEE DETAIL A	5747840-3
△	NONE	5747840-2
	CONTACT FINISH	PART NUMBER
	MOUNTING HARDWARE	

THIS DRAWING IS A CONTROLLED DOCUMENT.		DIN J.GERACE 07FEB05	Tyco Electronics Corporation Harrisburg, Pa 17105
DIMENSIONS: mm[INCHES]		CIK S.BOLASH 07FEB05	
TOLERANCES UNLESS OTHERWISE SPECIFIED:		APVD M.WALMSLEY 07FEB05	NAME: PLUG ASSEMBLY, SIZE 1, 9 POS, RIGHT ANGLE, FRONT METAL SHELL, 8.08[.318] SERIES, AMPLIMITE HD-20
0 PLC ± - 1 PLC ± - 2 PLC ± - 3 PLC ± 0.13[.005] 4 PLC ± - ± Z ANGLES ± - ± Z		PRODUCT SPEC: 108-40025 APPLICATION SPEC: 114-40010	
MATERIAL	FINISH	WEIGHT	SIZE: A1 CAGE CODE: 00779 DRAWING NO: 5747840 RESTRICTED TO: -
CUSTOMER DRAWING		SCALE: 4:1	SHEET: 1 OF 1 REV: A