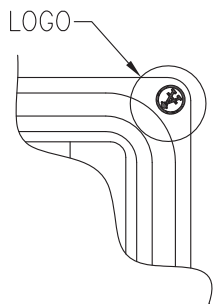
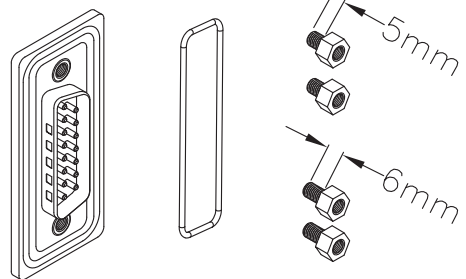
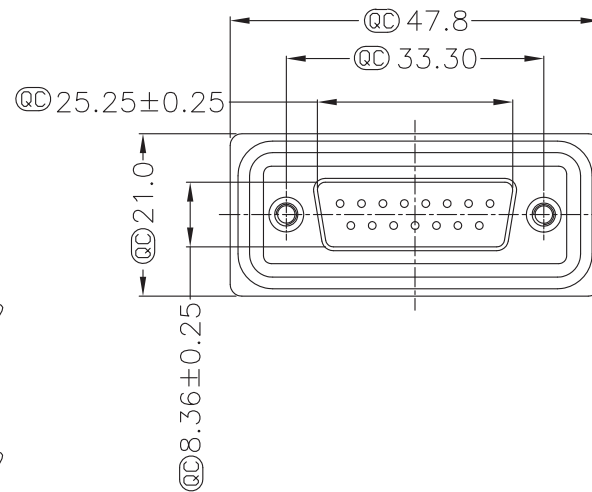
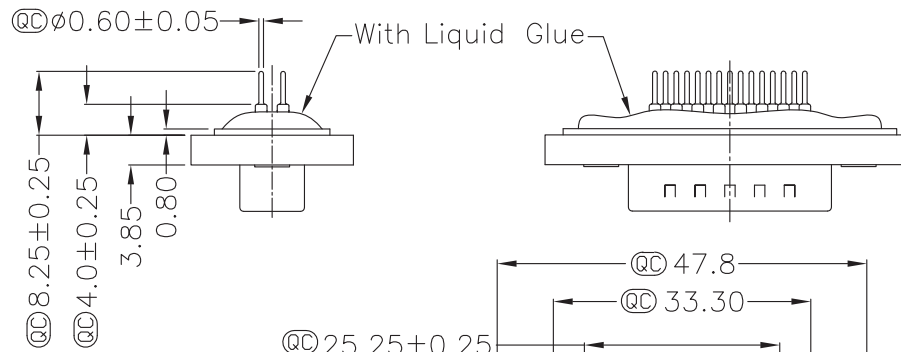


15 Pin Male Connector
PCB Pin Layout
Scale 2:1



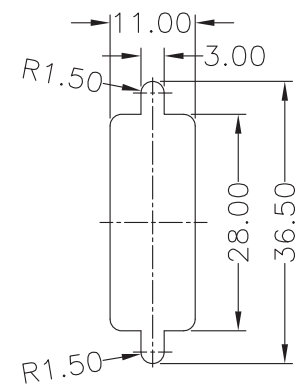
Material:

- Waterproof Rating: IP67
 - IP68: 1M of depth of water 24 hours
 - Do Mating Test After Glued
- DSub Connector: Black Core, PBT
- Plastic Jacket Black, Nylon+GF
- Pin: Copper Alloy, Gold Plated
- Ring: Light Blue, Silicone
- Screw: Copper Alloy, Nickel Plated, #4-40 UNC



Screw L= 5.0 For Panel Thickness Under 1.2 mm

Screw L= 6.0 For Panel Thickness Between 1.2~2.0mm



Recommended Panel Cut-Out

\textcircled{QC} Quality Control: Important Dimension to check
Unit: MM \pm 0.1MM

\textcircled{A} = Assmann logo



ITEM NO.	A-DS15PP-WP-R
TITLE	Waterproof DSub Connector - Straight Pin, for PCB mount, 15 contacts Male

ASSMANN
WSW components
1840 W. Drake Drive, Suite 101 • Tempe, AZ 85283
Toll Free: 1-877-277-6266 • Email: info@assmann.us

THIS DRAWING IS UNPUBLISHED
©Copyright 2011 by Assmann WSW components
All International Rights Reserved