



# FRAF1601G THRU FRAF1607G

Isolation 16.0 AMPS. Glass Passivated Fast Recovery Rectifiers



Voltage Range  
50 to 1000 Volts  
Current  
16.0 Amperes

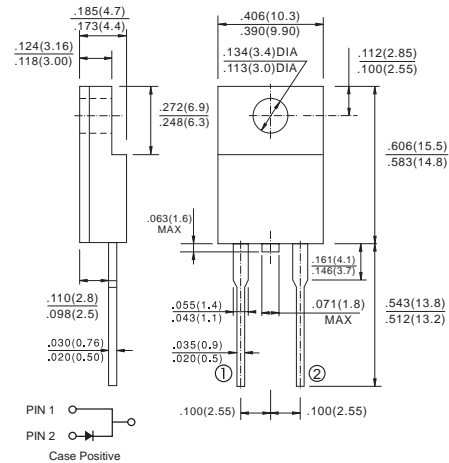
## Features

- ✧ Low forward voltage drop
- ✧ High current capability
- ✧ High reliability
- ✧ High surge current capability

## Mechanical Data

- ✧ Cases: ITO-220AC molded plastic
- ✧ Epoxy: UL 94V-0 rate flame retardant
- ✧ Terminals: Leads solderable per MIL-STD-202, Method 208 guaranteed
- ✧ Polarity: As marked
- ✧ High temperature soldering guaranteed: 260°C/10 seconds 0.25", (6.35mm) from case.
- ✧ Mounting position: Any
- ✧ Weight: 2.24 grams
- ✧ Mounting torque: 5 in – 1bs. max.

## ITO-220AC



Dimensions in inches and (millimeters)

## Maximum Ratings and Electrical Characteristics

Rating at 25°C ambient temperature unless otherwise specified.

Single phase, half wave, 60 Hz, resistive or inductive load.

For capacitive load, derate current by 20%

Type Number	Symbol	FRAF 1601G	FRAF 1602G	FRAF 1603G	FRAF 1604G	FRAF 1605G	FRAF 1606G	FRAF 1607G	Units
Maximum Recurrent Peak Reverse Voltage	$V_{RRM}$	50	100	200	400	600	800	1000	V
Maximum RMS Voltage	$V_{RMS}$	35	70	140	280	420	560	700	V
Maximum DC Blocking Voltage	$V_{DC}$	50	100	200	400	600	800	1000	V
Maximum Average Forward Rectified Current	$I_{(AV)}$	16							A
Peak Forward Surge Current, 8.3 ms Single Half Sine-wave Superimposed on Rated Load (JEDEC method)	$I_{FSM}$	250							A
Maximum Instantaneous Forward Voltage @ 16.0A	$V_F$	1.3							V
Maximum DC Reverse Current @ $T_C=25^\circ\text{C}$ at Rated DC Blocking Voltage @ $T_C=125^\circ\text{C}$	$I_R$	5.0 100							uA uA
Maximum Reverse Recovery Time (Note 1)	$T_{rr}$	150			250		500		nS
Typical Thermal Resistance (Note 2)	$R_{\theta C}$	4.5							°C/W
Operating and Storage Temperature Range	$T_J, T_{STG}$	-65 to +150							°C

Notes: 1. Reverse Recovery Test Conditions:  $I_F=0.5A$ ,  $I_R=1.0A$ ,  $I_{RR}=0.25A$

2. Thermal Resistance from Junction to Case Per Leg Mounted on Heatsink size 2" x 3" x 0.25" Al-Plate

## RATINGS AND CHARACTERISTIC CURVES (FRAF1601G THRU FRAF1607G)

FIG.1- REVERSE RECOVERY TIME CHARACTERISTIC AND TEST CIRCUIT DIAGRAM

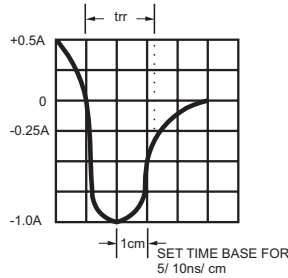
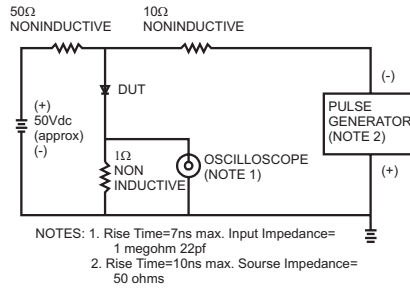


FIG.2- MAXIMUM FORWARD CURRENT DERATING CURVE

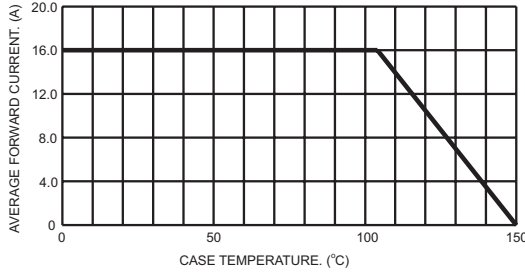


FIG.3- MAXIMUM NON-REPETITIVE FORWARD SURGE CURRENT

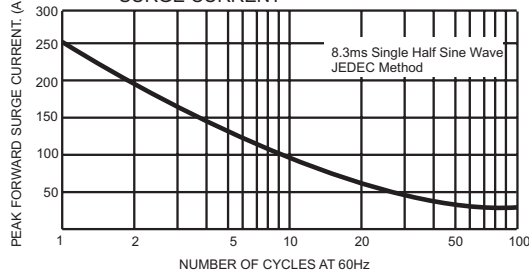


FIG.4- TYPICAL JUNCTION CAPACITANCE

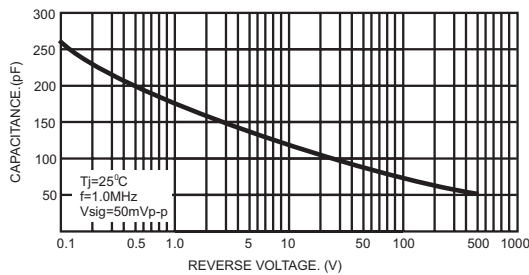


FIG.5- TYPICAL REVERSE CHARACTERISTICS

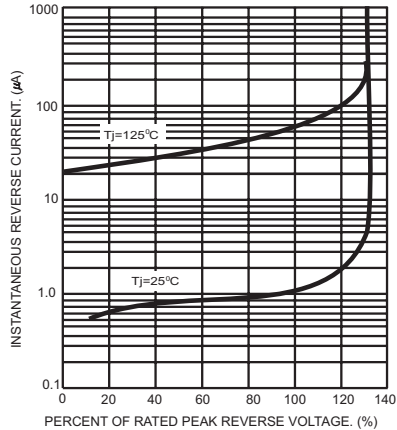


FIG.6- TYPICAL INSTANTANEOUS FORWARD CHARACTERISTICS

