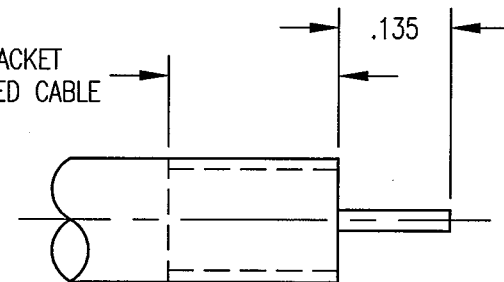


NOTES:


1. MATERIAL:
 CLIP RING: BERYLLIUM COPPER PER ASTM B194
 FRONT BODY: BERYLLIUM COPPER PER ASTM B196
 CENTER CONTACT & REAR BODY: BRASS PER ASTM B16
 INSULATOR: TEFLON PER ASTM D1710
2. FINISH:
 OUTER & CENTER CONTACT: .000030 MIN. GOLD PER MIL-G-45204 OVER
 .000050 MIN. NICKEL PER QQ-N-290
 REAR BODY: .000015 MIN. GOLD PER MIL-G-45204 OVER
 .000050 MIN. NICKEL PER QQ-N-290
 CLIP RING: .000100 MIN. NICKEL PER QQ-N-290 OVER
 COPPER FLASH
3. ELECTRICAL:
 DIELECTRIC WITHSTANDING VOLTAGE: 800 VRMS
 RECOMMENDED FREQUENCY RANGE: 0 - 3.0 GHz.
4. FOR USE WITH .141 DIA. SEMI-RIGID CABLE.

EFFECTIVE FEBRUARY 19, 1999 THIS
DRAWING BECAME THE PROPERTY
OF WINCHESTER ELECTRONICS DIV.
400 PARK RD., WATERTOWN, CT 06795
LITTON SYSTEMS, INCORPORATED.



STRIPPING DIMENSIONS

THIS INFORMATION IS PROPRIETARY AND CONFIDENTIAL. IT IS DISCLOSED TO YOU ON
 CONDITION NO FURTHER DISCLOSURE IS MADE TO OTHER THAN RETCONN PERSONNEL
 WITHOUT WRITTEN AUTHORIZATION FROM RETCONN INC., TORRINGTON, CT.

				UNLESS OTHERWISE SPECIFIED TOLERANCES: 3 PLACE DECIMALS ±.005 2 PLACE DECIMALS ±.010 FRACTIONS ±1/64 ANGLE ±2° ALL DIMENSIONS PRIOR TO PLATING CHAMFER 1ST THREAD 45° TO ROOT DIAMETER REMOVE ALL BURRS AND SHARP EDGES ALL DIAMETERS TO BE CONCENTRIC WITHIN .003 TIR SURFACE FINISH SHALL BE 63 MICROINCHES MAXIMUM DIMENSIONS IN INCHES DO NOT SCALE PRINT		 RETCONN A SUBSIDIARY OF SPM 199 W. PEARL ROAD TORRINGTON, CT. 06790 TEL. (860) 489-1220 FAX (860) 496-7307				
D	ECN 2052	7/10/98	JMC	237	TITLE					
C	NPR 694	1/22/98	JED	JMC	RDM STRAIGHT RECEPTACLE					
REV.	DESCRIPTION OF CHANGE	DATE	DRN	APPR	MATERIAL	DRAWN	DATE	CHECKED	SCALE	FSCM
					FINISH	JED	1/22/98	PRP	6:1	ODWJ4
REVISIONS						APPR.	DWG. NO.			REV.
						JMC	311-510-1410G			D