

PLEASE CHECK WWW.MOLEX.COM FOR LATEST PART INFORMATION

Part Number: [0355720900](#)
Status: **Active**
Description: 2.50mm (.098") Pitch Wire-to-Wire and Wire-to-Board Housing, Positive Lock, Nylon 6/6 Material, 9 Circuits, Natural

Documents:

[Drawing \(PDF\)](#) [RoHS Certificate of Compliance \(PDF\)](#)
[Product Specification PS-35572-001 \(PDF\)](#)

General

| | |
|----------------|-----------------------|
| Product Family | Crimp Housings |
| Series | 35572 |
| Product Name | N/A |

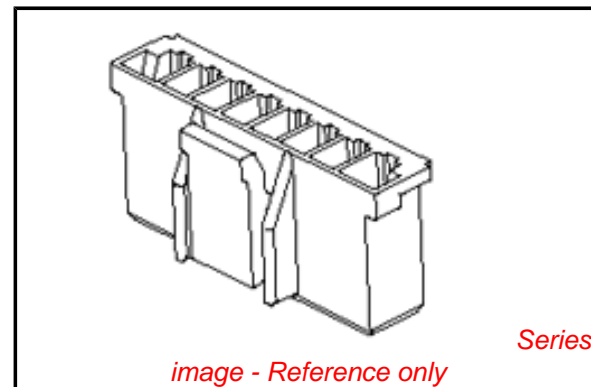
Physical

| | |
|-------------------------------|-----------------|
| Breakaway | No |
| Circuits (maximum) | 9 |
| Color - Resin | Natural |
| Gender | Female |
| Glow-Wire Compliant | No |
| Keying to Mating Part | None |
| Lock to Mating Part | Yes |
| Material - Resin | Polyester |
| Number of Rows | 1 |
| Packaging Type | Bag |
| Panel Mount | No |
| Pitch - Mating Interface (in) | 0.098 In |
| Pitch - Mating Interface (mm) | 2.50 mm |
| Temperature Range - Operating | -40°C to +105°C |

Material Info

Reference - Drawing Numbers

| | |
|-----------------------|--------------|
| Product Specification | PS-35572-001 |
| Sales Drawing | SD-35572-001 |



EU RoHS

ELV and RoHS Compliant
REACH SVHC Contains SVHC: No
Halogen-Free Status

China RoHS



Need more information on product environmental compliance?

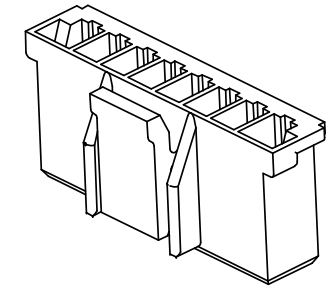
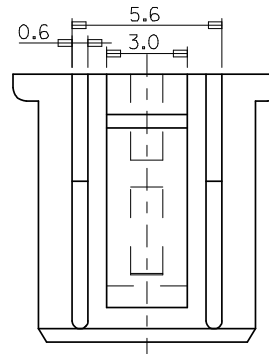
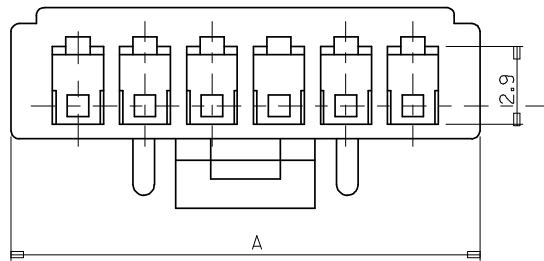
Email productcompliance@molex.com
 For a multiple part number RoHS Certificate of Compliance, [click here](#)

Please visit the [Contact Us](#) section for any non-product compliance questions.

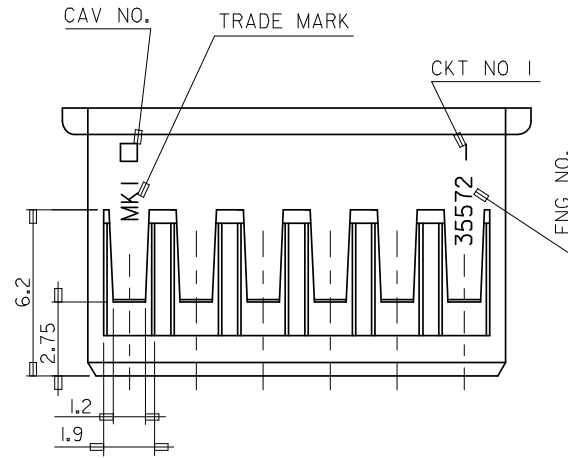
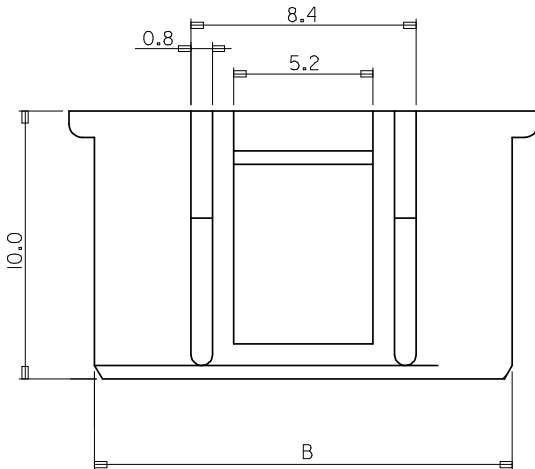
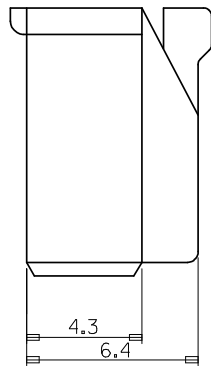
Search Parts in this Series
[35572Series](#)

Mates With
[35312](#) Vertical Shrouded Header, [35184](#) Plug Housing

Use With
[57915](#) Wire-to-Board Terminal

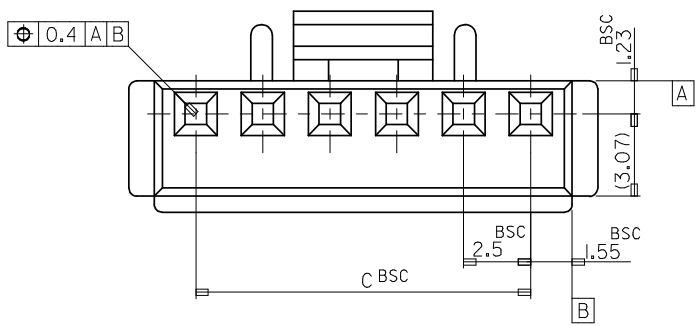


3 CKT ONLY



NOTE

1. MATERIAL : PBT UL94V-0 (VALOX 310SE0)
2. COLOR : 0 : NATURAL
2 : RED (ONLY 4P,6P,10P)
3. USED TERMINAL : 57915-9002/8001
4. MATED : 35312/35184



| | | | | | | | | | | |
|------|------|------|------------|-----|------|------|------|------------|------------|---|
| | | | | | | 20.0 | 23.1 | 25.0 | 35572-0900 | 9 |
| 35.0 | 38.1 | 40.0 | 35572-1500 | 15 | 17.5 | 20.6 | 22.5 | 35572-0800 | 8 | |
| 32.5 | 35.6 | 37.5 | 35572-1400 | 14 | 15.0 | 18.1 | 20.0 | 35572-0700 | 7 | |
| 30.0 | 33.1 | 35.0 | 35572-1300 | 13 | 12.5 | 15.6 | 17.5 | 35572-060* | 6 | |
| 27.5 | 30.6 | 32.5 | 35572-1200 | 12 | 10.0 | 13.1 | 15.0 | 35572-0500 | 5 | |
| 25.0 | 28.1 | 30.0 | 35572-1100 | 11 | 7.5 | 10.6 | 12.5 | 35572-040* | 4 | |
| 22.5 | 25.6 | 27.5 | 35572-100* | 10 | 5.0 | 8.1 | 10.0 | 35572-0300 | 3 | |
| C | B | A | ENG NO. | CKT | C | B | A | ENG NO. | CKT | |

| | | | | | | |
|--|-------------------------------------|---|---|--------------|--------------|------------------------|
| REVISED EC NO: KOR2008-0109 DRWN: JHPARK01 2008/01/02 CHKD: WY. YANG 2008/01/02 APPR: YUNS IKK IM 2008/01/02 | QUALITY SYMBOLS | GENERAL TOLERANCES (UNLESS SPECIFIED) | DIMENSION STYLE | SCALE | DESIGN UNITS | THIRD ANGLE PROJECTION |
| | $\nabla = 0$ $\sphericalcap = 0$ | mm INCH | MM ONLY | 5:1 | METRIC | |
| | DESCRIPTION | 4 PLACES ± --- ± --- 3 PLACES ± --- ± --- 2 PLACES ± --- ± --- 1 PLACE ± 0.2 ± --- ANGULAR ± 1° | DRAWN BY DATE HS. SHIN 2000/02/17 CHECKED BY DATE JK. OH 2000/02/17 APPROVED BY DATE CW. LEE 2000/02/17 | TITLE | | MOLEX INCORPORATED |
| | REVISION | DRAFT WHERE APPLICABLE MUST REMAIN WITHIN DIMENSIONS | MATERIAL NO. | DOCUMENT NO. | | |
| | | | SD35572.DGN | SD-35572-001 | | 1 OF 01 |
| | | | THIS DRAWING CONTAINS INFORMATION THAT IS PROPRIETARY TO MOLEX INCORPORATED AND SHOULD NOT BE USED WITHOUT WRITTEN PERMISSION | | | |