

PLEASE CHECK WWW.MOLEX.COM FOR LATEST PART INFORMATION

Part Number: [0391001503](#)
Status: **Active**
Description: 15.00mm (.591") Pitch Beau™ Eurostyle™ Two-Screw Terminal Strips, 3 Circuits

Documents:

[3D Model](#) [RoHS Certificate of Compliance \(PDF\)](#)
[Drawing \(PDF\)](#)

Agency Certification

CSA 25562
 UL E82573

General

Product Family Terminal Blocks
 Series [39100](#)
 Application Wire-to-Wire
 Component Type One Piece
 Product Literature Order No USA-303
 Product Name Eurostyle™ Two Screw
 Type Euro Block

Physical

Circuits (Loaded) 3
 Entry Angle Horizontal
 Flammability 94V-2
 Lock to Mating Part None
 Number of Rows 2
 Orientation Vertical
 PCB Retention Yes
 Panel Mount Mounting Holes Between Circuit
 Pitch - Mating Interface (in) 0.591 In
 Pitch - Mating Interface (mm) 15.00 mm
 Pitch - Term. Interface (in) 0.315 In
 Pitch - Term. Interface (mm) 8.00 mm
 Polarized to Mating Part No
 Stackable No
 Temperature Range - Operating 100°C
 Wire Size AWG 10, 12, 14, 6, 8

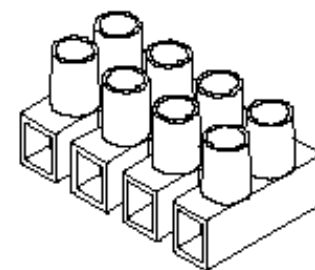
Electrical

Current - Maximum per Contact 65A
 Voltage - Maximum 600V

Material Info

Reference - Drawing Numbers

Sales Drawing SD-39100-007



Series

image - Reference only

EU RoHS

**ELV and RoHS
 Compliant**
REACH SVHC
 Not Reviewed
**Halogen-Free
 Status**
Not Reviewed

China RoHS

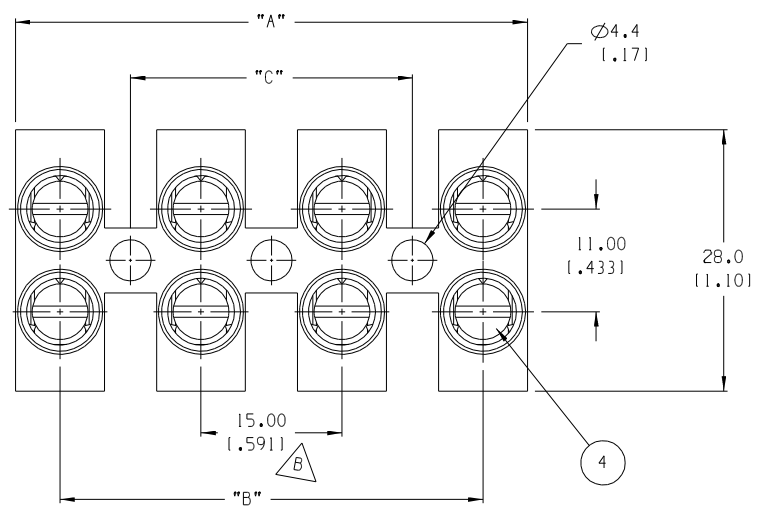


**Need more information on product
 environmental compliance?**

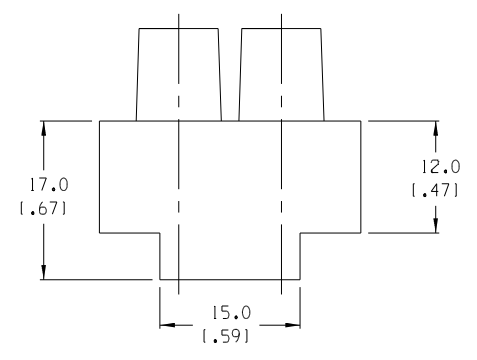
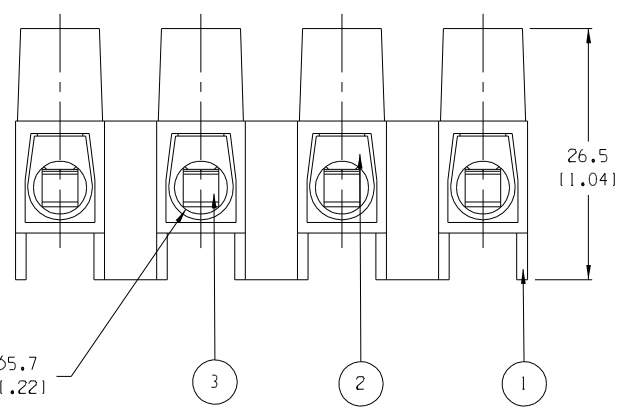
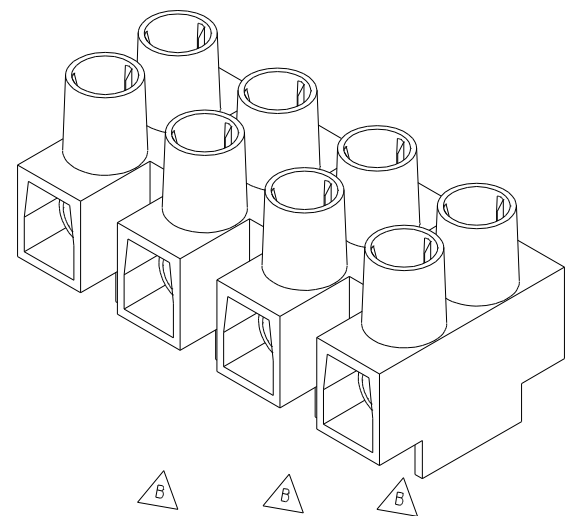
Email productcompliance@molex.com
 For a multiple part number RoHS Certificate of
 Compliance, [click here](#)

Please visit the [Contact Us](#) section for any
 non-product compliance questions.

Search Parts in this Series
[39100Series](#)



- NOTES:
1. MATERIAL: SEE TABLE
 2. FINISHES: SEE TABLE
 3. PRODUCT SPECIFICATION: NOT REQUIRED
 4. PACKAGING: NOT REQUIRED
 5. MATES WITH: NONE
 6. "XX" REFERS TO THE NUMBER OF CIRCUITS



NUMBER OF CIRCUITS	"A" DIM.	"B" DIM.	"C" DIM.	MATERIAL NUMBER
01	10.0 (1.39)	N/A	N/A	391001501
02	25.0 (1.98)	15.0 (1.59)	N/A	391001502
03	40.0 (1.57)	30.0 (1.18)	15.0 (1.59)	391001503
04	55.0 (2.17)	45.0 (1.77)	30.0 (1.18)	391001504
05	70.0 (2.76)	60.0 (2.36)	45.0 (1.77)	391001505
06	85.0 (3.35)	75.0 (2.95)	60.0 (2.36)	391001506
07	100.0 (3.94)	90.0 (3.54)	75.0 (2.95)	391001507
08	115.0 (4.53)	105.0 (4.13)	90.0 (3.54)	391001508
09	130.0 (5.12)	120.0 (4.72)	105.0 (4.13)	391001509
10	145.0 (5.71)	135.0 (5.31)	120.0 (4.72)	391001510
11	160.0 (6.30)	150.0 (5.90)	135.0 (5.31)	391001511
12	175.0 (6.89)	165.0 (6.49)	150.0 (5.90)	391001512

ITEM	QTY.	DESCRIPTION	MATERIAL	FINISH
4	XX*2	CLAMPING SCREWS, M5	STEEL	ZINC
3	XX	WIRE PROTECTOR	BRASS	NICKEL
2	XX	TERMINAL	BRASS	NICKEL
1	1	INSULATOR	NYLON 6	CLEAR

EC NO. ECN 4098 DRWG: RK 4-20-05 CH: K APPR:	QUALITY SYMBOLS MAJOR : CRITICAL C : SPC : S :	GENERAL TOLERANCES: (UNLESS SPECIFIED) <table border="1"> <tr><th colspan="2">mm</th><th colspan="2">INCH</th></tr> <tr><td>4 PLACES</td><td></td><td>±.0015</td><td></td></tr> <tr><td>3 PLACES</td><td>±.038</td><td>±.005</td><td></td></tr> <tr><td>2 PLACES</td><td>±.13</td><td>±.01</td><td></td></tr> <tr><td>1 PLACE</td><td>±.3</td><td></td><td></td></tr> </table>	mm		INCH		4 PLACES		±.0015		3 PLACES	±.038	±.005		2 PLACES	±.13	±.01		1 PLACE	±.3			SCALE 2:1 DESIGN UNITS <input type="checkbox"/> mm <input checked="" type="checkbox"/> INCH THIRD ANGLE PROJECTION	DRAWN BY & DATE J. FARMER 09-17-04 CHECKED BY & DATE R. KEMP 09-17-04 APPROVED BY & DATE GHR 09-17-04	PROJECT NO. - DIMENSIONS: <input checked="" type="checkbox"/> mm <input type="checkbox"/> INCH <input type="checkbox"/> mm SHT REV REVISE ON CAD ONLY
	mm		INCH																						
	4 PLACES		±.0015																						
	3 PLACES	±.038	±.005																						
2 PLACES	±.13	±.01																							
1 PLACE	±.3																								
TITLE: 15 MM HIGH PROFILE WITH WIRE PROTECTORS		CAD FILENAME 39100-15XX		MATERIAL NO. SEE CHART																					
DRAFT WHERE APPLICABLE MUST REMAIN WITHIN DIMENSIONS		ANGULAR: ±2°		DRAWING NO. SD-39100-007																					
THIS DRAWING CONTAINS INFORMATION THAT IS PROPRIETARY TO MOLEX INCORPORATED AND SHOULD NOT BE USED WITHOUT WRITTEN PERMISSION.				SHEET NO. 1 OF 1 SIZE B																					