

10 9 8 7 6 5 4 3 2 1

F

E

D

C

B

A

F

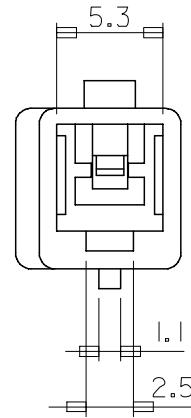
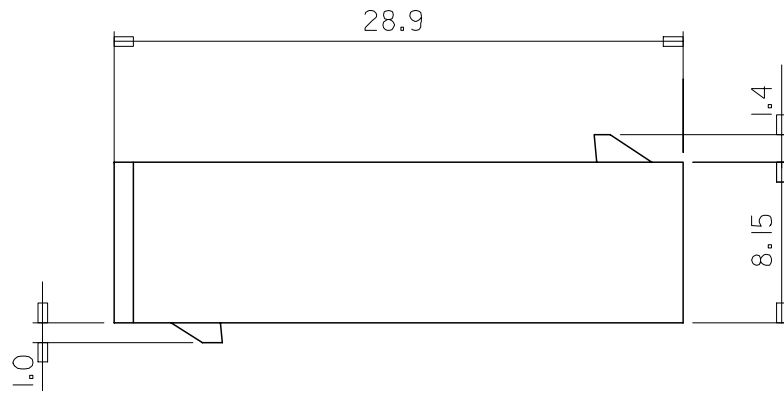
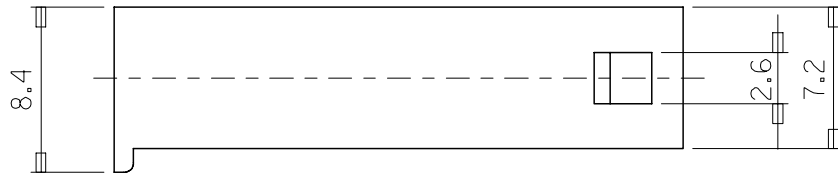
E

D

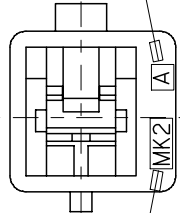
C

B

A



CAV. NO. (A, B...)



TRADE MARK
(MK2)

NOTES

1. MATERIAL & COLOR : SEE TABLE
2. MATING HOUSING: 35151-0110
3. APPLICABLE TERMINAL: 35745-0*10
4. APPLICABLE TPA: 35182-019*

NO	PRODUCT		MATERIAL	
	PART NO	MATERIAL NO	COLOR	DESCRIPTION
1	35150-0100	351500100	NATURAL	PBT (UL94V-0)
2	35150-0102	351500102	RED	
3	35150-0104	351500104	BLUE	PBT/PC
4	35150-0109	351500109	NATURAL	

REVISED
EC NO: KOR2008-0048
DRWN: JHPARK01 2007/09/10
CHKD: WY. YANG 2007/09/10
APPR: YUNSIKKIM 2007/09/10

QUALITY SYMBOLS
 =0
 =0

GENERAL TOLERANCES (UNLESS SPECIFIED)

	mm	INCH
4 PLACES	± .005	± .0002
3 PLACES	± .008	± .0003
2 PLACES	± .010	± .0004
1 PLACE	± 0.015	± .0006

ANGULAR ± 1 °

DRAFT WHERE APPLICABLE
MUST REMAIN WITHIN DIMENSIONS

DIMENSION STYLE
MM ONLY

DRAWN BY WY. YANG
CHECKED BY BK. CHOI
APPROVED BY CW. LEE

DATE _____
DATE _____
DATE _____

MATERIAL NO. _____

SIZE A3

SCALE 4:1

DESIGN UNITS METRIC

THIRD ANGLE PROJECTION

TITLE
.070 W/W
RECEPTACLE HSG-1P

MOLEX INCORPORATED

DOCUMENT NO. SD-35150-0100

SHEET NO. 1 OF 01

THIS DRAWING CONTAINS INFORMATION THAT IS PROPRIETARY TO MOLEX INCORPORATED AND SHOULD NOT BE USED WITHOUT WRITTEN PERMISSION

9 8 7 6 5 4 3 2 1