

Features

- Frequency Range: 10~500MHz
- Active Bias Design Supply Temperature Compensation
- Standard Hermetic Package
- Operating Temperature Range: -55°C ~ +85°C

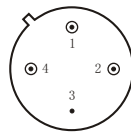
Specifications (50 Ω, V_{CC} = +15V, T_A = -55°C ~ +85°C)

Parameter	Symbol	Unit	Guaranteed	Typical
Frequency Range	f _L ~f _H	MHz	10~500	10~550
Gain	G _p	dB	≥28.0	29.0
Gain Flatness	ΔG _p	dB	≤±0.5	±0.3
Noise Figure	F _n	dB	≤2.0Δ	1.8
Input VSWR	VSWR _i	--	≤1.5:1	1.3:1
Output VSWR	VSWR _o	--	≤1.5:1	1.3:1
Output Power @ 1dB Compression	P ₋₁	dBm	≥6.0 * Δ	6.5
DC Current	I _{CC}	mA	--	38

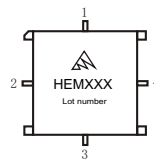
- 1) *f = 200MHz; "Δ" T_A = 24 ± 1°C;
- 2) The G_p and P₋₁ will be reduced 1dB and 3dB respectively under operating at 12VDC (I_{CC} = 32mA Typ).

Maximum Rating

DC Voltage : +17VDC
 RF Input: +10dBm
 Storage Temp: +125°C



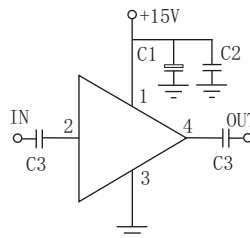
T0-8A



SMO-8C

Application Notes

1. Typical application shown as right, C₁ = 3.3~22 μF ; C₂ = 3300~6800pF; C₃ = 1000pF;
2. See assembly section for mounting information
3. Connectorized package(SMA-1) available



Typical Curves

