

PLEASE CHECK WWW.MOLEX.COM FOR LATEST PART INFORMATION

Part Number: [0442480034](#)
Status: **Active**
Overview: [modular_plugs_jacks](#)
Description: Modular Jack, Right Angle, Low Profile, Inverted, Lightpipes, 8/8, 4 Ports

Documents:

[3D Model](#) [Product Specification PS-43860-003 \(PDF\)](#)
[Drawing \(PDF\)](#) [RoHS Certificate of Compliance \(PDF\)](#)

Agency Certification

CSA LR19980
 UL E107635

General

Product Family Modular Jacks/Plugs
 Series [44248](#)
 Comments Industry Compatible
 Component Type PCB Jack
 Magnetic No
 Overview [modular_plugs_jacks](#)
 Performance Category 3
 Power over Ethernet (PoE) N/A
 Product Name RJ45

Physical

Boot Color N/A
 Color - Resin Black, Clear
 Durability (mating cycles max) 500
 Flammability 94V-0
 Inverted / Top Latch Yes
 Lightpipes/LEDs Lightpipes
 Material - Metal Phosphor Bronze
 Material - Plating Mating Gold
 Material - Plating Termination Tin
 Material - Resin Polycarbonate, Polyester
 Orientation Right Angle (Side Entry)
 PCB Locator Yes
 PCB Retention Yes
 PCB Thickness Recommended (in) 0.062 In
 PCB Thickness Recommended (mm) 1.57 mm
 Packaging Type Tray
 Pitch - Mating Interface (in) 0.040 In
 Pitch - Mating Interface (mm) 1.02 mm
 Pitch - Term. Interface (in) 0.040 In
 Pitch - Term. Interface (mm) 1.02 mm
 Plating min: Mating (µin) 50
 Plating min: Mating (µm) 1.25
 Plating min: Termination (µin) 100
 Plating min: Termination (µm) 2.5
 Ports 4
 Positions / Loaded Contacts 8/8
 Surface Mount Compatible (SMC) No
 Temperature Range - Operating -40°C to +85°C
 Termination Interface: Style Through Hole
 Waterproof / Dustproof No
 Wire/Cable Type N/A

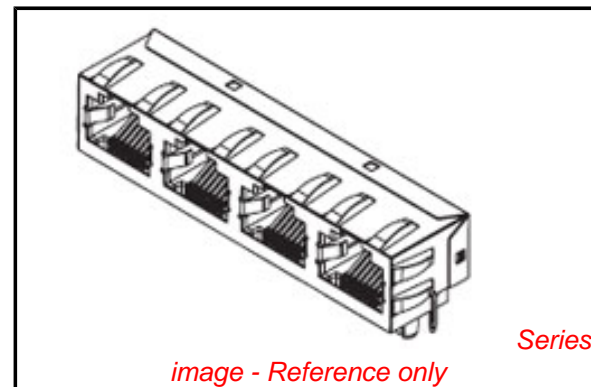


image - Reference only

Series

EU RoHS

**ELV and RoHS
 Compliant**
REACH SVHC
 Not Reviewed
**Halogen-Free
 Status**

China RoHS



**Need more information on product
 environmental compliance?**

Email productcompliance@molex.com
 For a multiple part number RoHS Certificate of
 Compliance, [click here](#)

Please visit the [Contact Us](#) section for any
 non-product compliance questions.

Search Parts in this Series

[44248Series](#)

Mates With

FCC 68 Plugs

Electrical

| | |
|-------------------------------|---------------|
| Current - Maximum per Contact | 1.5A |
| Grounding to PCB | Yes |
| Shielded | Yes |
| Voltage - Maximum | 150V AC (RMS) |

Solder Process Data

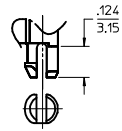
| | |
|--|------------------------|
| Duration at Max. Process Temperature (seconds) | 5 |
| Lead-free Process Capability | Wave Capable (TH only) |
| Max. Cycles at Max. Process Temperature | 1 |
| Process Temperature max. C | 260 |

Material Info**Reference - Drawing Numbers**

| | |
|---------------------------|---|
| Application Specification | AS-43860-001 |
| Packaging Specification | PK-44248-004 |
| Product Specification | PS-43860-003, RPS-43860-004, RPS-43860-007, RPS-43860-008, RPS-43860-013 |
| Sales Drawing | SD-44248-001 |

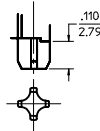
This document was generated on 06/08/2010

PLEASE CHECK WWW.MOLEX.COM FOR LATEST PART INFORMATION



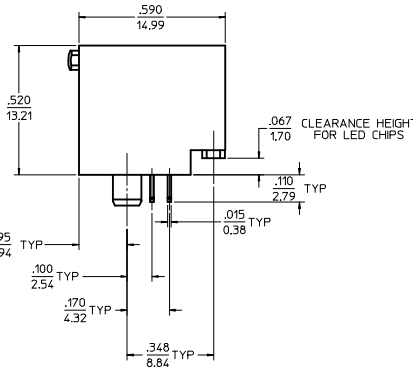
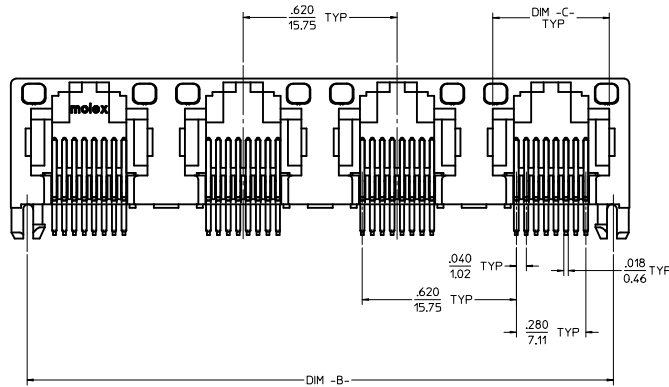
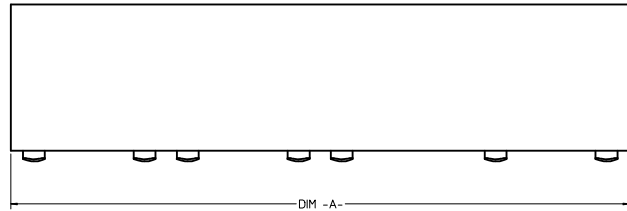
SNAP-FIT PEG OPTION

SCALE: NTS
SEE NOTE #8



PRESS-FIT PEG OPTION

SCALE: NTS
SEE NOTE #8



8 CIRCUIT HOUSING(S)

| ASSEMBLY MATERIAL NUMBER | NUMBER OF CIRCUITS | NUMBER OF PORTS | PEG STYLE | DIM -A- | DIM -B- | DIM -C- |
|--------------------------|--------------------|-----------------|-----------|-------------|-------------|------------|
| 44248-0001 | 8 | 2 | SNAP-FIT | 1.250/31.75 | 1.120/28.45 | .469/11.92 |
| 44248-0002 | 8 | 4 | SNAP-FIT | 2.490/63.25 | 2.360/59.94 | .469/11.92 |
| 44248-0005 | 8 | 2 | PRESS-FIT | 1.250/31.75 | 1.120/28.45 | .469/11.92 |
| 44248-0006 | 8 | 4 | PRESS-FIT | 2.490/63.25 | 2.360/59.94 | .469/11.92 |

6 CIRCUIT HOUSING(S)

| ASSEMBLY MATERIAL NUMBER | NUMBER OF CIRCUITS | NUMBER OF PORTS | PEG STYLE | DIM -A- | DIM -B- | DIM -C- |
|--------------------------|--------------------|-----------------|-----------|-------------|-------------|-----------|
| 44248-0009 | 6 | 2 | SNAP-FIT | 1.250/31.75 | 1.120/28.45 | .389/9.88 |
| 44248-0010 | 4 | 2 | SNAP-FIT | 1.250/31.75 | 1.120/28.45 | .389/9.88 |
| 44248-0011 | 6 | 4 | SNAP-FIT | 2.490/63.25 | 2.360/59.94 | .389/9.88 |
| 44248-0012 | 4 | 4 | SNAP-FIT | 2.490/63.25 | 2.360/59.94 | .389/9.88 |
| 44248-0017 | 6 | 2 | PRESS-FIT | 1.250/31.75 | 1.120/28.45 | .389/9.88 |
| 44248-0018 | 4 | 2 | PRESS-FIT | 1.250/31.75 | 1.120/28.45 | .389/9.88 |
| 44248-0019 | 6 | 4 | PRESS-FIT | 2.490/63.25 | 2.360/59.94 | .389/9.88 |
| 44248-0020 | 4 | 4 | PRESS-FIT | 2.490/63.25 | 2.360/59.94 | .389/9.88 |

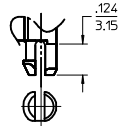
- NOTES:**
- MATERIAL:
HOUSING: POLYESTER(PBT), GLASS FILLED, UL94V-0, COLOR: BLACK
LIGHT PIPES: POLYCARBONATE, UL-94V2, COLOR: CLEAR
TERMINALS: PHOSPHOR BRONZE
 - FINISH:
TERMINALS:
*SELECT GOLD IN CONTACT AREA: 50 MICROINCHES (1.27 MICROMETERS) MIN.
*SELECT TIN IN PC TAIL AREA: 100 MICROINCHES (2.54 MICROMETERS) MIN.
WITH OVERALL NICKEL UNDERPLATE: 50 MICROINCHES (1.27 MICROMETERS) MIN.
*THE PRIMARY SHIPPING CARTON WILL BE LABELED "COMPLIANT TO RoHS DIRECTIVE 2002/95/EC AND ELV ANNEX II OF DIRECTIVE 2000/53/EC."
CARTONS WITHOUT THIS LABEL MAY CONTAIN PRODUCT WITH TIN-LEAD IN THE PC TAILS.
 - PRODUCT SPECIFICATION AND PROCESSING PARAMETERS: PS-43860-003.
SPECIFICATION PK-44248-004.
 - PACKAGING SPECIFICATION:
CONNECTOR ASSEMBLIES IN THERMOFORMED TRAYS PER MOLEX PACKAGING
 - APPLICATION SPECIFICATION: AS-43860-001
 - ALL UNTOLERANCED DIMENSIONS ARE SHOWN FOR REFERENCE ONLY.
 - CONFORMS TO FCC REGULATION PART 68.5 FOR MODULAR JACKS.
 - MODJACKS AVAILABLE WITH EITHER SNAP-FIT OR PRESS-FIT PEGS.
THIS DRAWING SHOWS SNAP-FIT PEGS.
 - PCB LAYOUT AND PANEL CUT-OUT SHOWN ON SHEETS (5) AND (6).
 - THIS PART CONFORMS TO CLASS B REQUIREMENTS OF COSMETIC SPECIFICATION PS-45499-002.

UNSHIELDED
WITH LIGHT PIPES

| | | | | | | |
|--|--|---|--|--------------|----------------------|------------------------|
| CHGD 0117 TO 0119 IEC NO: UCP2009-1482 DRAWN: KLOSTNER 2008/12/10 CHKD: BELL 2008/12/10 APPROVED: SMITH 2008/12/10 REV 4 | QUALITY SYMBOLS ▽=0 ▽=0 | GENERAL TOLERANCES (UNLESS SPECIFIED): mm INCH 4 PLACES ±--- ±--- 3 PLACES ±--- ±.010 2 PLACES ±0.25 ±--- 1 PLACE ±--- ±--- ANGULAR ±1/2° | DIMENSION STYLE IN/MM DRAWN BY DATE MMAYO 98/10/06 CHECKED BY DATE JOBERTS 98/10/06 APPROVED BY DATE JOBERTS 98/10/06 | SCALE 4:1 | DESIGN UNITS INCH | THIRD ANGLE PROJECTION |
| | GANGED INVERTED MODJACK ASSEMBLY | | | | | |
| | MOLEX INCORPORATED | | | | | |
| | MATERIAL NO. SD-44248-001 DOCUMENT NO. 1 OF 6 | | | | | |

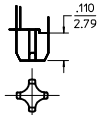
DRAFT WHERE APPLICABLE MUST REMAIN WITHIN DIMENSIONS

SIZE D THIS DRAWING CONTAINS INFORMATION THAT IS PROPRIETARY TO MOLEX INCORPORATED AND SHOULD NOT BE USED WITHOUT WRITTEN PERMISSION



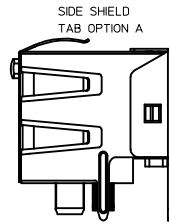
(SNAP-FIT PEG OPTION)

SCALE: NTS.
SEE NOTE #8

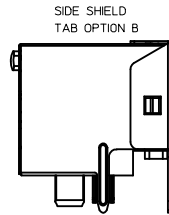


(PRESS-FIT PEG OPTION)

SCALE: NTS.
SEE NOTE #8



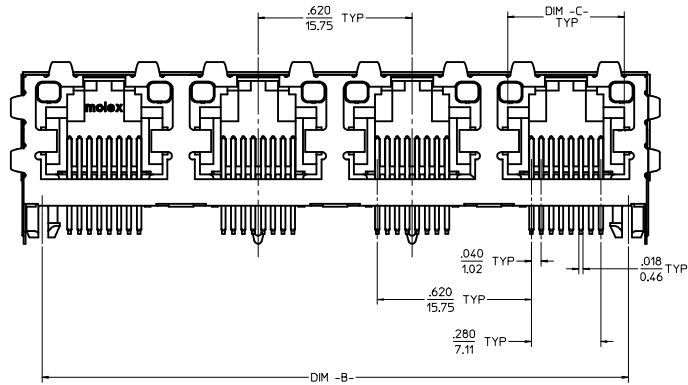
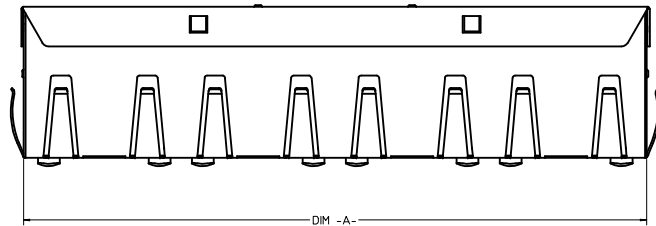
SIDE SHIELD
TAB OPTION A



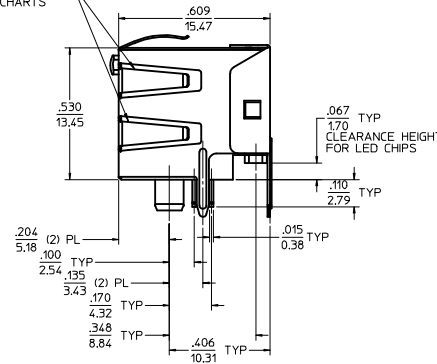
SIDE SHIELD
TAB OPTION B

| (8) CIRCUIT HOUSING(S) | | | | | | | |
|--------------------------|--------------------|-----------------|-----------|------------------------|-------------|-------------|------------|
| ASSEMBLY MATERIAL NUMBER | NUMBER OF CIRCUITS | NUMBER OF PORTS | PEG STYLE | SIDE SHIELD TAB OPTION | DIM -A- | DIM -B- | DIM -C- |
| 44248-0029 | 8 | 2 | SNAP-FIT | A | 1.274/32.36 | 1.120/28.45 | .469/11.92 |
| 44248-0030 | 8 | 4 | SNAP-FIT | A | 2.514/63.86 | 2.360/59.94 | .469/11.92 |
| 44248-0033 | 8 | 2 | PRESS-FIT | A | 1.274/32.36 | 1.120/28.45 | .469/11.92 |
| 44248-0034 | 8 | 4 | PRESS-FIT | A | 2.514/63.86 | 2.360/59.94 | .469/11.92 |

| (6) CIRCUIT HOUSING(S) | | | | | | | |
|--------------------------|--------------------|-----------------|-----------|------------------------|-------------|-------------|-----------|
| ASSEMBLY MATERIAL NUMBER | NUMBER OF CIRCUITS | NUMBER OF PORTS | PEG STYLE | SIDE SHIELD TAB OPTION | DIM -A- | DIM -B- | DIM -C- |
| 44248-0037 | 6 | 2 | SNAP-FIT | A | 1.274/32.36 | 1.120/28.45 | .389/9.88 |
| 44248-0038 | 4 | 2 | SNAP-FIT | A | 1.274/32.36 | 1.120/28.45 | .389/9.88 |
| 44248-0039 | 6 | 4 | SNAP-FIT | A | 2.514/63.86 | 2.360/59.94 | .389/9.88 |
| 44248-0040 | 4 | 4 | SNAP-FIT | A | 2.514/63.86 | 2.360/59.94 | .389/9.88 |
| 44248-0045 | 6 | 2 | PRESS-FIT | A | 1.274/32.36 | 1.120/28.45 | .389/9.88 |
| 44248-0046 | 4 | 2 | PRESS-FIT | A | 1.274/32.36 | 1.120/28.45 | .389/9.88 |
| 44248-0047 | 6 | 4 | PRESS-FIT | A | 2.514/63.86 | 2.360/59.94 | .389/9.88 |
| 44248-0048 | 4 | 4 | PRESS-FIT | A | 2.514/63.86 | 2.360/59.94 | .389/9.88 |



OPTIONAL SIDE
SHIELD TABS
SEE CHARTS

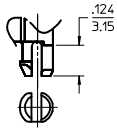


NOTES:

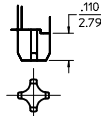
- MATERIAL:
HOUSING: POLYESTER(PBT), GLASS FILLED, UL94V-0, COLOR: BLACK
LIGHT PIPES: POLYCARBONATE, UL-94V2, COLOR: CLEAR
TERMINALS: PHOSPHOR BRONZE
SHIELD: BRASS
- FINISH:
TERMINALS:
*SELECT GOLD IN CONTACT AREA: 50 MICROINCHES (1.27 MICROMETERS) MIN.
*SELECT TIN IN PC TAIL AREA: 100 MICROINCHES (2.54 MICROMETERS) MIN,
WITH OVERALL NICKEL UNDERPLATE: 50 MICROINCHES (1.27 MICROMETERS) MIN.
SHIELD:
*100 MICROINCHES (2.54 MICROMETERS) NICKEL OVER 50 MICROINCHES (1.27 MICROMETERS) COPPER UNDERPLATE PCB GROUND TABS DIPPED IN TIN
*THE PRIMARY SHIPPING CARTON WILL BE LABELED "COMPLIANT TO RoHS DIRECTIVE 2002/95/EC AND ELV ANNEX II OF DIRECTIVE 2000/53/EC". CARTONS WITHOUT THIS LABEL MAY CONTAIN PRODUCT WITH TIN-LEAD IN THE PC TAILS AND/OR SHIELD.
- PRODUCT SPECIFICATION AND PROCESSING PARAMETERS: PS-43860-003.
- PACKAGING SPECIFICATION:
CONNECTOR ASSEMBLIES IN THERMOFORMED TRAYS PER MOLEX PACKAGING SPECIFICATION PK-44248-004.
- APPLICATION SPECIFICATION: AS-43860-001
- ALL UNTOLERANCED DIMENSIONS ARE SHOWN FOR REFERENCE ONLY.
- CONFORMS TO FCC REGULATION PART 68.5 FOR MODULAR JACKS.
- MODJACKS AVAILABLE WITH EITHER SNAP-FIT OR PRESS-FIT PEGS. THIS DRAWING SHOWS SNAP-FIT PEGS.
- PCB LAYOUT AND PANEL CUT-OUT SHOWN ON SHEETS (5) AND (6).
- THIS PART CONFORMS TO CLASS B REQUIREMENTS OF COSMETIC SPECIFICATION PS-45499-002.

SHIELDED
WITH LIGHT PIPES

| | | | | | | |
|---|---|--|---|---|---|--------------------|
| SEE SHEET 1 IEC NO: UCP2009-1482 DRAWN: KLOSTNER/ER 2008/12/10 CHKD: BELL 2008/12/10 APPROVED: SMITH 2008/12/10 REV DESCRIPTION | QUALITY SYMBOLS ▽=0 ▽=0 | GENERAL TOLERANCES (UNLESS SPECIFIED): DIMENSION STYLE: IN/MM SCALE: 4:1 DESIGN UNITS: INCH THIRD ANGLE PROJECTION | DRAWN BY: MMAYO 98/10/06 CHECKED BY: JROBERTS 98/10/06 APPROVED BY: JROBERTS 98/10/06 | DATE: 98/10/06 DATE: 98/10/06 DATE: 98/10/06 | TITLE: GANGED INVERTED MODJACK ASSEMBLY | |
| | 4 PLACES ±.010 3 PLACES ±.010 2 PLACES ±.025 1 PLACE ±.010 | ANGULAR ±1/2° | DRAFT WHERE APPLICABLE MUST REMAIN WITHIN DIMENSIONS | MATERIAL NO. SEE CHART DOCUMENT NO. SD-44248-001 | SHEET NO. 2 OF 6 | MOLEX INCORPORATED |
| | THIS DRAWING CONTAINS INFORMATION THAT IS PROPRIETARY TO MOLEX INCORPORATED AND SHOULD NOT BE USED WITHOUT WRITTEN PERMISSION | | | | | |
| | MOLEX INCORPORATED | | | | | |



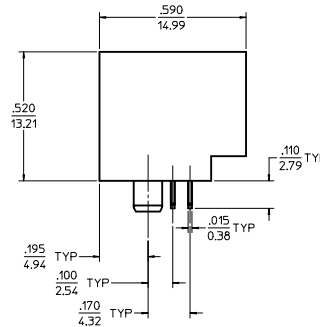
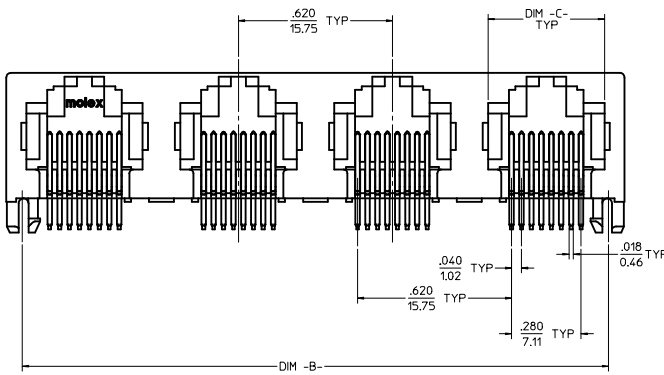
SNAP-FIT PEG OPTION
SCALE: NTS,
SEE NOTE #7



PRESS-FIT PEG OPTION
SCALE: NTS,
SEE NOTE #7

| 8 CIRCUIT HOUSING(S) | | | | | | |
|--------------------------|--------------------|-----------------|-----------|-------------|-------------|------------|
| ASSEMBLY MATERIAL NUMBER | NUMBER OF CIRCUITS | NUMBER OF PORTS | PEG STYLE | DIM -A- | DIM -B- | DIM -C- |
| 44248-0057 | 8 | 2 | SNAP-FIT | 1.250/31.75 | 1.120/28.45 | .469/11.92 |
| 44248-0058 | 8 | 4 | SNAP-FIT | 2.490/63.25 | 2.360/59.94 | .469/11.92 |
| 44248-0061 | 8 | 2 | PRESS-FIT | 1.250/31.75 | 1.120/28.45 | .469/11.92 |
| 44248-0062 | 8 | 4 | PRESS-FIT | 2.490/63.25 | 2.360/59.94 | .469/11.92 |

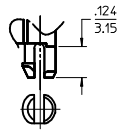
| 6 CIRCUIT HOUSING(S) | | | | | | |
|--------------------------|--------------------|-----------------|-----------|-------------|-------------|-----------|
| ASSEMBLY MATERIAL NUMBER | NUMBER OF CIRCUITS | NUMBER OF PORTS | PEG STYLE | DIM -A- | DIM -B- | DIM -C- |
| 44248-0065 | 6 | 2 | SNAP-FIT | 1.250/31.75 | 1.120/28.45 | .389/9.88 |
| 44248-0066 | 4 | 2 | SNAP-FIT | 1.250/31.75 | 1.120/28.45 | .389/9.88 |
| 44248-0067 | 6 | 4 | SNAP-FIT | 2.490/63.25 | 2.360/59.94 | .389/9.88 |
| 44248-0068 | 4 | 4 | SNAP-FIT | 2.490/63.25 | 2.360/59.94 | .389/9.88 |
| 44248-0073 | 6 | 2 | PRESS-FIT | 1.250/31.75 | 1.120/28.45 | .389/9.88 |
| 44248-0074 | 4 | 2 | PRESS-FIT | 1.250/31.75 | 1.120/28.45 | .389/9.88 |
| 44248-0075 | 6 | 4 | PRESS-FIT | 2.490/63.25 | 2.360/59.94 | .389/9.88 |
| 44248-0076 | 4 | 4 | PRESS-FIT | 2.490/63.25 | 2.360/59.94 | .389/9.88 |



- NOTES:
 1) MATERIAL:
 HOUSING: POLYESTER(PBT), GLASS FILLED, UL94V-0, COLOR: BLACK
 TERMINALS: PHOSPHOR BRONZE
 2) FINISH:
 TERMINALS:
 *SELECT GOLD IN CONTACT AREA: 50 MICROINCHES (1.27 MICROMETERS) MIN.
 *SELECT TIN IN PC TAIL AREA: 100 MICROINCHES (2.54 MICROMETERS) MIN.
 WITH OVERALL NICKEL UNDERPLATE: 50 MICROINCHES (1.27 MICROMETERS) MIN.
 *THE PRIMARY SHIPPING CARTON WILL BE LABELED "COMPLIANT TO RoHS DIRECTIVE 2002/95/EC AND ELV ANNEX II OF DIRECTIVE 2000/53/EC". CARTONS WITHOUT THIS LABEL MAY CONTAIN PRODUCT WITH TIN-LEAD IN THE PC TAILS.
 3) PRODUCT SPECIFICATION AND PROCESSING PARAMETERS: PS-43860-003.
 4) PACKAGING SPECIFICATION:
 CONNECTOR ASSEMBLIES IN THERMOFORMED TRAYS PER MOLEX PACKAGING SPECIFICATION PK-44248-004.
 5) ALL UNTOLERANCED DIMENSIONS ARE SHOWN FOR REFERENCE ONLY.
 6) CONFORMS TO FCC REGULATION PART 68.5 FOR MODULAR JACKS.
 7) MODJACKS AVAILABLE WITH EITHER SNAP-FIT OR PRESS-FIT PEGS. THIS DRAWING SHOWS SNAP-FIT PEGS.
 8) PCB LAYOUT AND PANEL CUT-OUT SHOWN ON SHEETS (5) AND (6).
 9) THIS PART CONFORMS TO CLASS B REQUIREMENTS OF COSMETIC SPECIFICATION PS-45499-002.

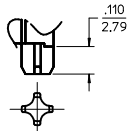
UNSHIELDED

| | | | | | | | |
|--|--|--|---|---|--------------|------------------------|--|
| SEE SHEET 1 IEC NO: UCP2009-1482 DRAWN: KLOSTNER 2008/12/10 CHKD: BELL 2008/12/10 APPROVED: SMITH 2008/12/10 | QUALITY SYMBOLS | GENERAL TOLERANCES (UNLESS SPECIFIED) | DIMENSION STYLE | SCALE | DESIGN UNITS | THIRD ANGLE PROJECTION | |
| | ▽=0 ▽=0 | mm INCH 4 PLACES ± .--- ± .--- 3 PLACES ± .--- ± .010 2 PLACES ± 0.25 ± .--- 1 PLACE ± .--- ± .--- ANGULAR ±1/2° | IN/MM DRAWN BY: MMAYO DATE: 98/10/06 CHECKED BY: JROBERTS DATE: 98/10/06 APPROVED BY: JROBERTS DATE: 98/10/06 | TITLE: GANGED INVERTED MODJACK ASSEMBLY | 4:1 | INCH | |
| | DRAFT WHERE APPLICABLE MUST REMAIN WITHIN DIMENSIONS | MATERIAL NO. SEE CHART DOCUMENT NO. SD-44248-001 | MOLEX INCORPORATED | SHEET NO. 3 OF 6 | | | |
| | SIZE D | THIS DRAWING CONTAINS INFORMATION THAT IS PROPRIETARY TO MOLEX INCORPORATED AND SHOULD NOT BE USED WITHOUT WRITTEN PERMISSION | | | | | |



SNAP-FIT PEG OPTION

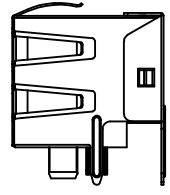
SCALE: NTS
SEE NOTE #7



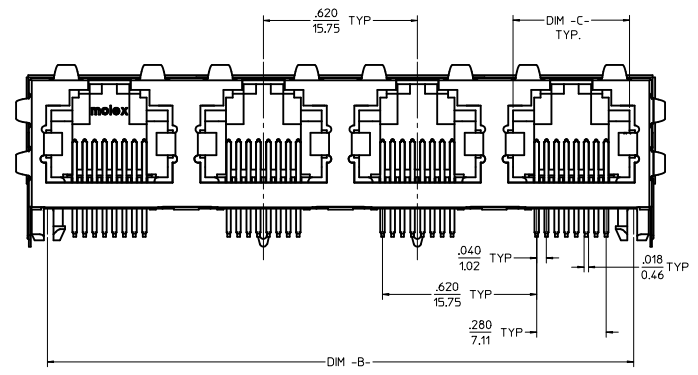
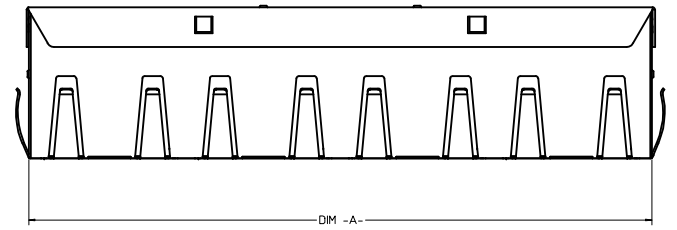
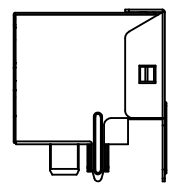
PRESS-FIT PEG OPTION

SCALE: NTS
SEE NOTE #7

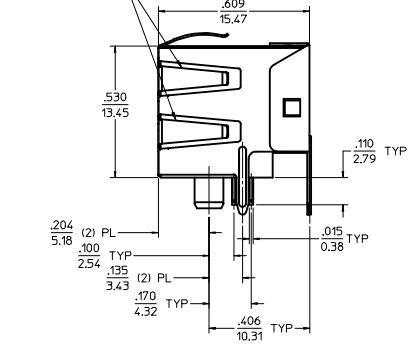
SIDE SHIELDED TAB OPTION A



SIDE SHIELDED TAB OPTION B



OPTIONAL SIDE SHIELD TABS SEE CHARTS



(8) CIRCUIT HOUSING(S)

| X = NOT TOOLED | ASSEMBLY MATERIAL NUMBER | NUMBER OF CIRCUITS | NUMBER OF PORTS | PEG STYLE | SIDE SHIELD TAB OPTION | DIM -A- | DIM -B- | DIM -C- |
|----------------|--------------------------|--------------------|-----------------|-----------|------------------------|-------------|-------------|------------|
| | 44248-0085 | 8 | 2 | SNAP-FIT | A | 1,274/32.36 | 1,120/28.45 | .469/11.92 |
| | 44248-0086 | 8 | 4 | SNAP-FIT | A | 2,514/63.86 | 2,360/59.94 | .469/11.92 |
| | 44248-0089 | 8 | 2 | PRESS-FIT | A | 1,274/32.36 | 1,120/28.45 | .469/11.92 |
| | 44248-0090 | 8 | 4 | PRESS-FIT | A | 2,514/63.86 | 2,360/59.94 | .469/11.92 |
| X | 44248-0119 | 8 | 4 | PRESS FIT | B | 2,514/63.86 | 2,360/59.94 | .469/11.92 |

(6) CIRCUIT HOUSING(S)

| ASSEMBLY MATERIAL NUMBER | NUMBER OF CIRCUITS | NUMBER OF PORTS | PEG STYLE | SIDE SHIELD TAB OPTION | DIM -A- | DIM -B- | DIM -C- |
|--------------------------|--------------------|-----------------|-----------|------------------------|-------------|-------------|-----------|
| 44248-0093 | 6 | 2 | SNAP-FIT | A | 1,274/32.36 | 1,120/28.45 | .389/9.88 |
| 44248-0094 | 4 | 2 | SNAP-FIT | A | 1,274/32.36 | 1,120/28.45 | .389/9.88 |
| 44248-0095 | 6 | 4 | SNAP-FIT | A | 2,514/63.86 | 2,360/59.94 | .389/9.88 |
| 44248-0096 | 4 | 4 | SNAP-FIT | A | 2,514/63.86 | 2,360/59.94 | .389/9.88 |
| 44248-0101 | 6 | 2 | PRESS-FIT | A | 1,274/32.36 | 1,120/28.45 | .389/9.88 |
| 44248-0102 | 4 | 2 | PRESS-FIT | A | 1,274/32.36 | 1,120/28.45 | .389/9.88 |
| 44248-0103 | 6 | 4 | PRESS-FIT | A | 2,514/63.86 | 2,360/59.94 | .389/9.88 |
| 44248-0104 | 4 | 4 | PRESS-FIT | A | 2,514/63.86 | 2,360/59.94 | .389/9.88 |

- NOTES:**
- MATERIAL:**
HOUSING: POLYESTER(PBT), GLASS FILLED, UL94V-0, COLOR: BLACK
TERMINALS: PHOSPHOR BRONZE
SHIELD: BRASS
 - FINISH:**
TERMINALS:
*SELECT GOLD IN CONTACT AREA: 50 MICRONCHES (1.27 MICROMETERS) MIN.
*SELECT TIN IN PC TAIL AREA: 100 MICRONCHES (2.54 MICROMETERS) MIN.
WITH OVERALL NICKEL UNDERPLATE: 50 MICRONCHES (1.27 MICROMETERS) MIN.
SHIELD:
*100 MICRONCHES (2.54 MICROMETERS) NICKEL OVER 50 MICRONCHES (1.27 MICROMETERS) COPPER UNDERPLATE PCB GROUND TABS DIPPED IN TIN
*THE PRIMARY SHIPPING CARTON WILL BE LABELED "COMPLIANT TO RoHS DIRECTIVE 2002/95/EC AND ELV ANNEX II OF DIRECTIVE 2000/53/EC" (CARTONS WITHOUT THIS LABEL MAY CONTAIN PRODUCT WITH TIN-LEAD IN THE PC TAILS AND/OR SHIELD.
 - PRODUCT SPECIFICATION AND PROCESSING PARAMETERS:** PS-43860-003.
 - PACKAGING SPECIFICATION:**
CONNECTOR ASSEMBLIES IN THERMOFORMED TRAYS PER MOLEX PACKAGING SPECIFICATION PK-44248-004.
 - ALL UNTOLERANCED DIMENSIONS ARE SHOWN FOR REFERENCE ONLY.
 - CONFORMS TO FCC REGULATION PART 68.5 FOR MODULAR JACKS.
 - MODJACKS AVAILABLE WITH EITHER SNAP-FIT OR PRESS-FIT PEGS. THIS DRAWING SHOWS SNAP-FIT PEGS.
 - PCB LAYOUT AND PANEL CUT-OUT SHOWN ON SHEETS (5) AND (6).
 - THIS PART CONFORMS TO CLASS B REQUIREMENTS OF COSMETIC SPECIFICATION PS-43499-002.

SHIELDED

| | | | | | | | |
|---|--------------------------------------|--|------------------|---|--|-----------------------------|------------------------|
| CHGD 0117 TO 0119 IEC NO: UCP2009-1482 DRAWN: KLOS/TEHLER 2008/12/10 CHKD: BELL 2008/12/10 APPROV: SMITH 2008/12/10 REV: C4 | QUALITY SYMBOLS ▽=0 ▽=0 | GENERAL TOLERANCES (UNLESS SPECIFIED) | | DIMENSION STYLE IN/MM | SCALE 4:1 | DESIGN UNITS INCH | THIRD ANGLE PROJECTION |
| | | 4 PLACES ±--- 3 PLACES ±--- 2 PLACES ±0.25 1 PLACE ±--- | mm INCH | DATE 98/10/06 | TITLE GANGED INVERTED MODJACK ASSEMBLY | | |
| | | ANGULAR ±1/2° | DATE 98/10/06 | MATERIAL NO. SD-44248-001 | | | |
| | | DRAFT WHERE APPLICABLE MUST REMAIN WITHIN DIMENSIONS | DATE 98/10/06 | MOLEX INCORPORATED DOCUMENT NO. | | | |
| | | SHEET NO. 4 OF 6 | | THIS DRAWING CONTAINS INFORMATION THAT IS PROPRIETARY TO MOLEX INCORPORATED AND SHOULD NOT BE USED WITHOUT WRITTEN PERMISSION | | | |

