



LC Male Connector Clamp/Solder Attachment For RG218, RG219

TECHNICAL DATA SHEET

PE4323

LC Male Connector Clamp/Solder Attachment For RG218, RG219
Configuration

Connector	LC Male
Connector Specification	MIL-STD-348
Connector Interface Type	RG218, RG219
Cable Attachment Method (Shield/Contact)	Clamp/Solder
Body Style	Straight

Electrical Specifications

Frequency Range, MHz	DC to 1,000
Impedance, Ohms	50
Dielectric Withstanding Voltage, Vrms	5,000

Mechanical Specifications
Temperature

Operating Range, deg C	-65 to +165
------------------------	-------------

Size

Length, in [mm]	3.95 [100.33]
Width/Dia., in [mm]	1.5 [38]
Weight, lbs [g]	0.907 [411.41]

Connector

Type	LC Male
Contact Material and Plating	Beryllium Copper, Silver
Outer Conductor Material and Plating	Phosphor Bronze, Nickel
Coupling Nut Material and Plating	Brass, Nickel
Hex Size, in	1 1/2
Torque, in-lbs [Nm]	61 [6.89]
Body Material and Plating	Brass, Nickel

Compliance Certifications (visit www.Pasternack.com for current document)

RoHS Compliant	Yes
----------------	-----

Plotted and Other Data

Notes:	Values at 25 °C, sea level
--------	----------------------------

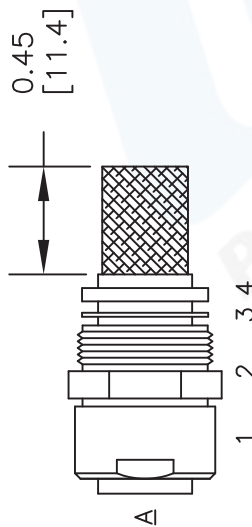
 URL: <http://www.pasternack.com/lc-male-standard-rg218-rg219-connector-pe4323-p.aspx>

LC Male Connector Clamp/Solder Attachment For RG218, RG219 from Pasternack Enterprises has same day shipment for domestic and International orders. We maintain 99% availability of the industry's broadest selection of RF, microwave and fiber optic products.

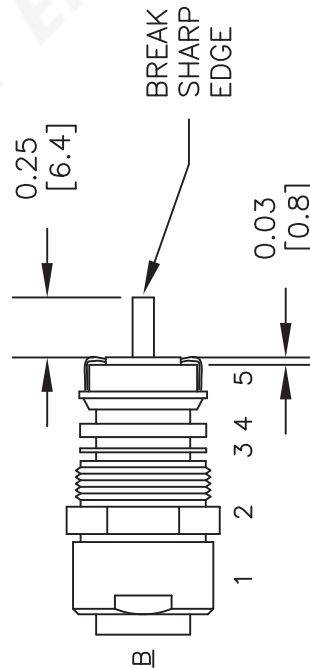
The information contained in this document is accurate to the best of our knowledge and representative of the part described herein. It may be necessary to make modifications to the part and/or the documentation of the part, in order to implement improvements. Pasternack reserves the right to make such changes as required. Unless otherwise stated, all specifications are nominal.

ASSEMBLY PROCEDURES

1. SLIDE CLAMP NUT (1), EXTENSION (2), WASHER (3) & GASKET (4) OVER CABLE. STRIP CABLE AS SHOWN IN A. DO NOT NICK BRAID. WHILE CUTTING JACKET COMB OUT BRAID. TAPER END OF BRAID TO PERMIT ASSEMBLY OF BRAID CLAMP (5). SLIDE BRAID CLAMP (5) OVER BRAID & SEAT AGAINST CABLE.

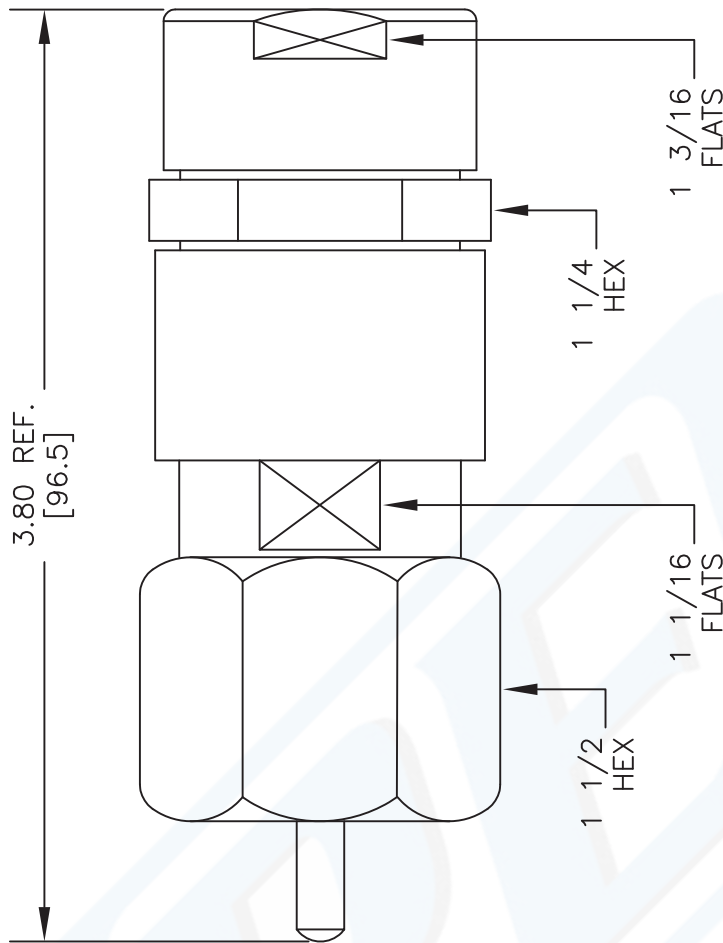


2. FORM BRAID OVER BRAID CLAMP NUT (5). TRIM BRAID BACK TO SHOULDER. CUT DIELECTRIC & CENTER CONDUCTOR TO DIMENSION SHOWN IN B. DO NOT NICK CENTER CONDUCTOR. INSERT #12 ALLEN WRENCH INTO SELF-TAPPING CONTACT. THREAD THE SELF-TAPPING CONTACT ONTO CENTER CONDUCTOR UNTIL IT SEATS AGAINST DIELECTRIC. SCREW CONTACT & CABLE ASSEMBLY INTO INSULATOR IN BODY. TIGHTEN BODY & EXTENSION (2) TOGETHER SECURELY. * THEN TIGHTEN CLAMP NUT (1) TO EXTENSION (2).



NOTE

RG219 STRAIGHTEN BULGE IN CLAMP NUT (1) & CUT IT SO THAT IT CAN BE CLAMPED TOGETHER TO EXTENSION (2).



DWG TITLE

PE4323

NOTES:
 1. UNLESS OTHERWISE SPECIFIED ALL DIMENSIONS ARE NOMINAL.
 2. ALL SPECIFICATIONS ARE SUBJECT TO CHANGE WITHOUT NOTICE AT ANY TIME.
 3. DIMENSIONS ARE IN INCHES [mm].
 4. FITS MIL-C-17 AND EQUIVALENT CABLES.

FSCM NO. 53919

CAD FILE 092812-A

SCALE N/A

SIZE A

2233



Pasternack Enterprises, Inc.
 P.O. Box 16759 | Irvine | CA | 92623
 Phone: (949) 261-1920 | Fax: (949) 261-7451
 Website: www.pasternack.com | E-Mail: sales@pasternack.com