

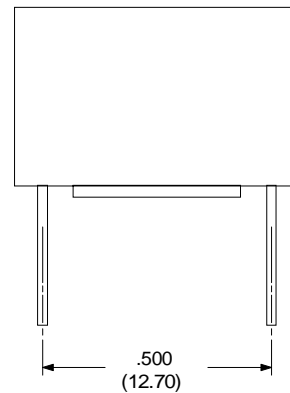
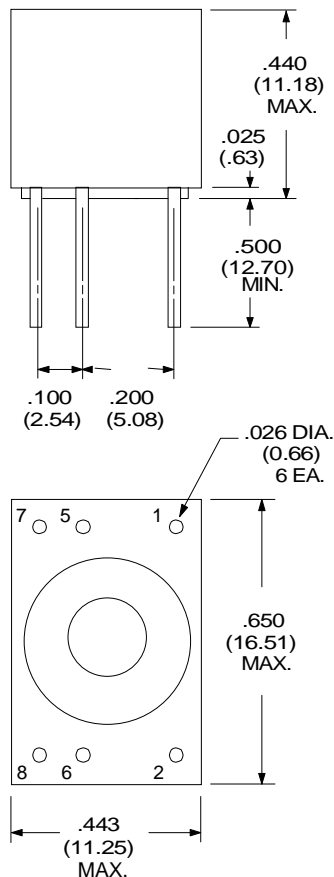
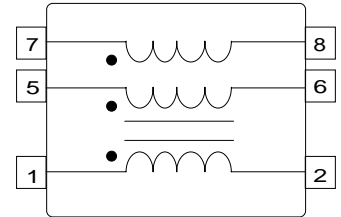
Turns Ratio ( ± 5% )

1 : 1 : 1

# Multi-Purpose Transformer

PARAMETER	MIN.	MAX.	UNITS
Open Circuit Inductance	1.04	1.56	mH
Leakage Inductance		3.2	μH
Interwinding Capacitance ( $C_{WW}$ )		38	pF
Primary DC Resistance		3.6	ohms
Secondary DC Resistance		3.8	ohms
Tertiary DC Resistance		3.9	ohms
Rise Time		30	ns
Primary ET	91.0		VμS
Isolation (HI-POT)	700		V <sub>RMS</sub>

SCHEMATIC DIAGRAM



Dimensions in  
inches (mm)

RHOMBUS P/N: **T-1224**

CUST P/N:

NAME:

DATE: **04/20/99**

SHEET: 1 OF 1