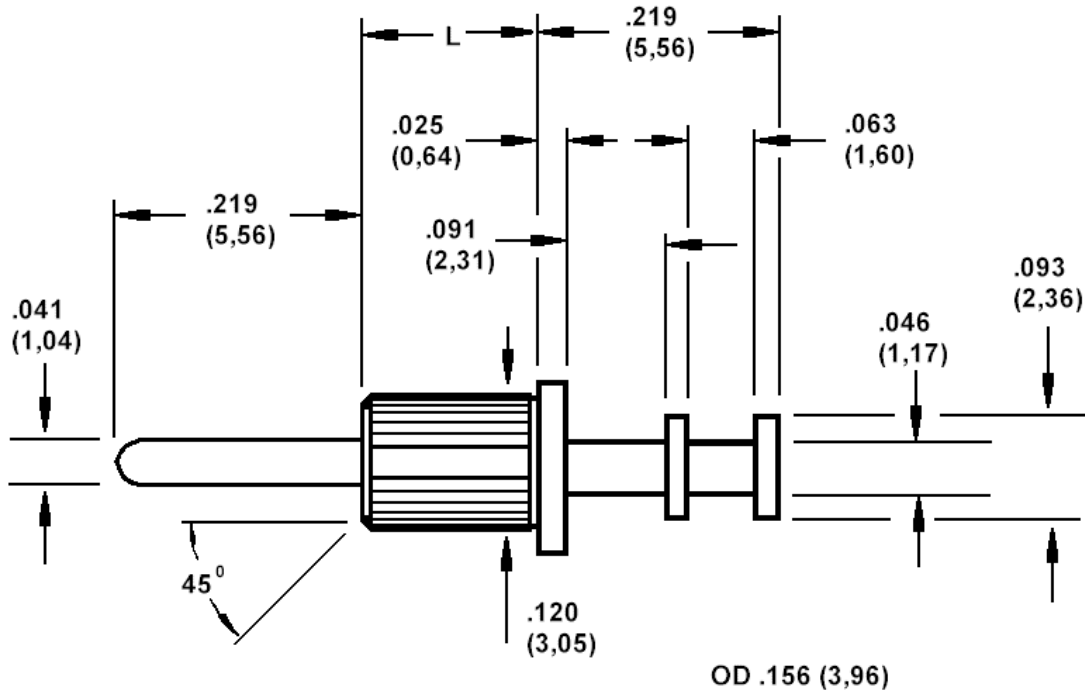


120-2081, Solder terminal, .125 (3,18) mounting hole (.125 (3,18) drill)



**How to order code**

**120-2081-XX-01-00**

Basic Part No (XX=board thickness. See table for options)

Basic Part No		L	Board Thickness
120-2081	-01	.063(1.60)	.031 (0,79)
	-02	.093 (2,36)	.062 (1,59)
	-03	.125 (3,18)	.094 (2,38)
	-04	.156 (3,96)	.125 (3,18)

Component	Material	Finish
		-01
Terminal	Brass	Silver

Recommended Swaging Tools:-	Contact us for more tooling information
Anvil	435-6422-01-00-00
Roll punch	435-6622-01-00-00

Mechanical tolerance unless otherwise stated  $\pm .005(0,13)$