

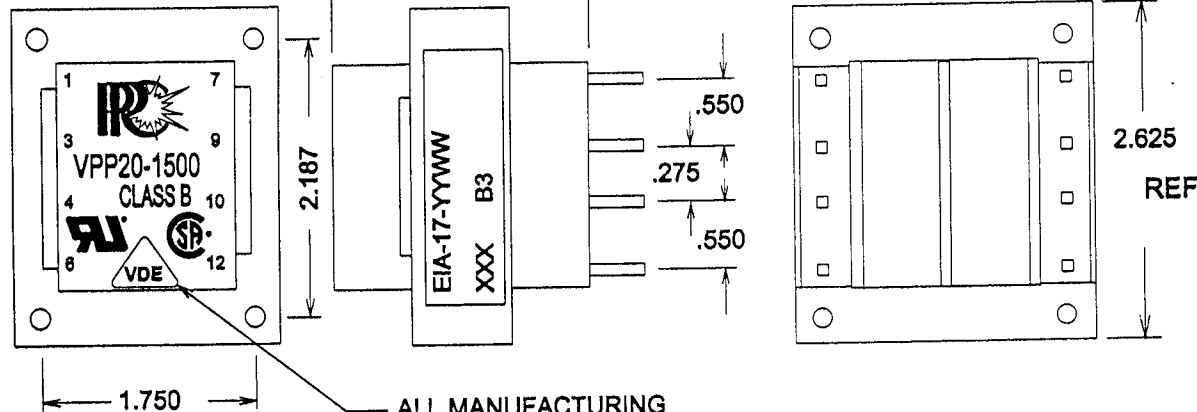
TOLERANCE UNLESS SPECIFIED =

.XXX= +/- .005

.XX= +/- .015

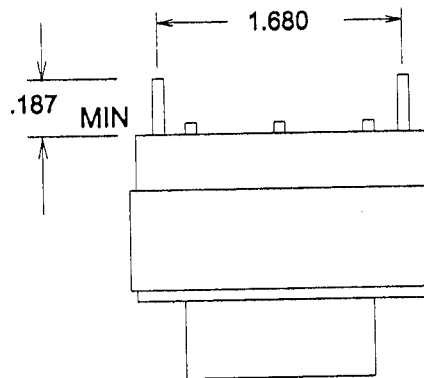
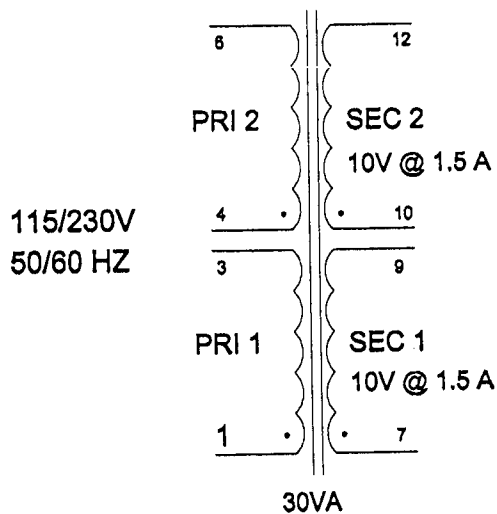
FRACTIONS= +/- .032

VPP20-1500.DC2



ALL MANUFACTURING SITES USE THIS MARK

PC PINS .045 SQ.



PRODUCTION TESTS

URNS RATIO = 100%

DC RESISTANCE IN OHMS	1-3 =	51 NOM
	4-6 =	63 NOM
	7-9 =	.55 NOM
	10-12 =	.67 NOM

MAX EXCITATION CURRENT = .040 A

APPLY 230V 60HZ 1-6 (3+4)

PRI WDGS 114.5 TO 115.5 V

SEC WDGS 11.8 TO 12.5 V

HIPOT: 4000V P-S
4000V P,S, TO CORE
600V P-P, S-S

IMPREGNATION NOTES: PREHEAT 2 HRS
PINS TO BE FREE OF IMPREGNATION

FINAL ASSEMBLY NOTES

METHOD 1 X 1
LEAVE OFF LAST "I" PCS

MARKING SEE LABEL DETAIL ABOVE
APPLY PART NO. LABEL, AFTER IMPREGNATION.



PART NO. : VPP20-1500