

Accessories

Slide Rail



For 1U rackmount chassis

- 26" P/N: 9680006902
- Maximum acceptable load: 25kg



For 2U and higher rackmount chassis

- 26" P/N: 9680006905
- Maximum acceptable load: 45kg

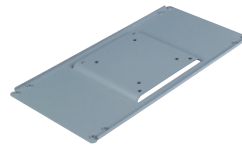
ARK-6 Series Accessories



ARK-WLAN-USB

ARK-6 series Wireless LAN 802.11 b/g module (USB connection)

- 802.11b/g standard
- USB 2.0 interface
- Range: Indoors up to 80m
Outdoors up to 250m



989K008732

VESA mounting plate for ARK-6000 series (except for ARK-6610)

- Dimensions (W x H x D):

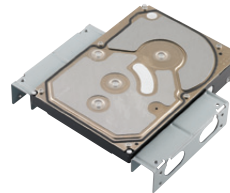
Industrial Disk Tray/Bay



IDT-5101

Shockproof industrial hard disk drive tray with cooling fan and optional front USB and PS/2 interfaces

- Accepted HDD: 1 x 3.5" (only for 9.5mm thickness)
- Cooling Fan: 1 x 4 cm
- Material: Heavy duty steel plate with coating
- Color (Codes): Gray (414U), Black (4C2X)
- Dimensions (W x H x D): 148.5 x 42.6 x 171 mm (5.85" x 1.68" x 6.73")
- Weight: 400 g (0.88 lb)
- P/N: IDT-5101, IDT-5101-BLK, IDT-5121, IDT-5121-BLK with dual USB & PS/2



989K008733

A frame to securely fix a 3.5" HDD in a 5.25" drive bay

- Dimensions (W x H x D):



989K008734

A frame to securely fix two 2.5" HDDs in a 3.5" drive bay

- Dimensions (W x H x D):



IDT-3120E

Mobile rack for converting a 3.5" drive bay to dual 2.5" SATA HDD trays

- Accepted HDD: 2 x 2.5" SATA HDD (only for HDD thickness with 9.6 mm)
- Material: stainless steel
- Dimensions (W x H x D): 25.4 x 101.6 x 147.5 mm

* Does not support 2.5" SAS HDD



IDT-5230E

Mobile rack for converting dual 5.25" drive bays to three 3.5" SAS/SATA HDD trays

- Accepted HDD: 3 x 3.5" SAS/SATA HDD
- Cooling Fan: 1 x 8 cm
- Material: stainless steel
- Dimensions (W x H x D): 86 x 148 x 224.7 mm

Accessories



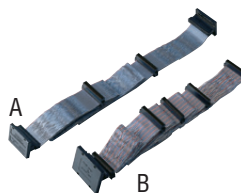
Model Name	1700008462	1700008461	1700100170	1700003195	1700100301	1700002204
Description	USB cable with four ports		USB cable with dual ports		USB cable with dual ports	
Length	30.5 cm (12.01")	30.5 cm (12.01")	17.5 cm (6.89")	17.5 cm (6.89")	27 cm (11.92")	27 cm (11.92")
Pins	10	9	10	9	10	9
Supported Models	AIMB-750 (A1E), AIMB-740, PCA-6002, PCA-6178, PCA-6186, PCA-6187, PCA-6190	AIMB-762, AIMB-763, AIMB-764, AIMB-766, AIMB-767, AIMB-769, AIMB-780, AIMB-781, AIMB-782, PCA-6008, PCA-6010, PCA-6011, PCA-6194, PCE-5124, PCE-5125, PCE-5126, PCE-5127	AIMB-750 (A1E), AIMB-740, PCA-6002, PCA-6178, PCA-6186, PCA-6187, PCA-6190	AIMB-762, AIMB-763, AIMB-764, AIMB-766, AIMB-767, AIMB-769, AIMB-780, AIMB-781, AIMB-782, PCA-6008, PCA-6010, PCA-6011, PCA-6194, PCE-5124, PCE-5125, PCE-5126, PCE-5127	AIMB-750 (A1E), AIMB-740, PCA-6002, PCA-6178, PCA-6186, PCA-6187, PCA-6190	AIMB-762, AIMB-763, AIMB-764, AIMB-766, AIMB-767, AIMB-769, AIMB-780, AIMB-781, AIMB-782, PCA-6008, PCA-6010, PCA-6011, PCA-6194, PCE-5124, PCE-5125, PCE-5126, PCE-5127



Model Name	1700008822
Description	24-pin to 20-pin DVI cable with bracket
Length	30 cm
Supported Models	PCE-5125, PCE-5126, PCE-5026, PCE-5127, PCE-7127, ASMB-782



Model Name	1700060202	1700060201	1701260305
Description	Y-cable for PS/2 mouse & keyboard for CPU card	Y-cable for PS/2 mouse & AT keyboard for CPU card	Serial and parallel ports with cables and bracket

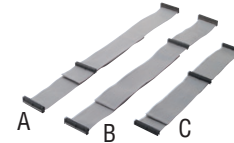
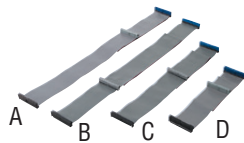


Model Name	1700006915	1700006916	A. 1701680670	B. 1700000182	1700340640
Function	Cable to activate front door LED board on ACP-4000MB chassis	Cable to activate front door LED board on IPC-610MB-H chassis	68-pin SCSI LVDS cable; 2 male connectors & terminators	68-pin SCSI LVDS cable; 5 male connectors & 1 terminator	FDD cable for two 3.5" FDD
Length			67 cm (26.38")	125 cm (49.21")	
Supported Models	AIMB-542, 562, 564, 763	AIMB-542, 562, 564, 763			

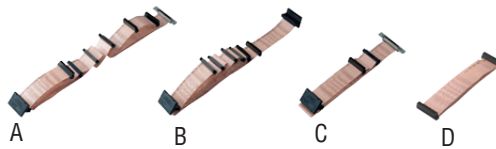
Accessories



Model Name	1700003194	1700000136	1700000137	1700030500	1700000450
Description	SATA Cable 7-pin, 180D w/lock	S-Video cable	AV cable	ATX connector cable from CPU card to backplane	ATX to AT power converter
Length	60 cm (23.62")	180 cm (70.87")	180 cm (70.87")	-	-



Model Name	A. 1701400973	B. 1701400972	C. 1701400652	D. 1701400452	A. 1701400971	B. 1701400970	C. 1701400607
Description	HDD cable, ATA 66/100				HDD cable, ATA 33		
Length	62 + 35 cm (24.41" + 13.78")	82 + 15 cm (32.28" + 5.91")	45 + 20 cm (17.72" + 7.87")	45 cm (17.72")	62 + 35 cm (24.41" + 13.78")	82 + 15 cm (32.28" + 5.91")	60 cm (23.62")



Model Name	A. 1701681790	B. 1701681560	C. 1701681100	D. 1701680550
Description	68-pin SCSI LVDS cable, F-6M-T, for RAID-500U3	68-pin SCSI LVDS cable, T-6M-T	68-pin SCSI LVDS cable, F-M-M-T	68-pin SCSI LVDS cable, F-M-M-T
Length	179 cm (70.47")	156 cm (61.42")	110 cm (43.31")	53 cm (20.87")