

PLEASE CHECK WWW.MOLEX.COM FOR LATEST PART INFORMATION

Part Number: [0014564151](#)
Status: **Active**
Overview: [cgrid_sl_products](#)
Description: 2.54mm (.100") Pitch SL™ Insulation Displacement Connector Assembly, Female, Single Row, Version D, Back Ribs, Wire Size 24, 0.76µm (30µ") Gold (Au), 15 Circuits

Documents:

[3D Model](#) [Product Specification PS-70400 \(PDF\)](#)
[Drawing \(PDF\)](#) [RoHS Certificate of Compliance \(PDF\)](#)

Agency Certification

CSA LR19980
 UL E29179

General

Product Family Ribbon Cable / Wire Trap Connectors
 Series [70400](#)
 Comments Terminals Preloaded
 Component Type Housing
 Glow-Wire Compliant No
 Overview [cgrid_sl_products](#)
 Product Name SL™

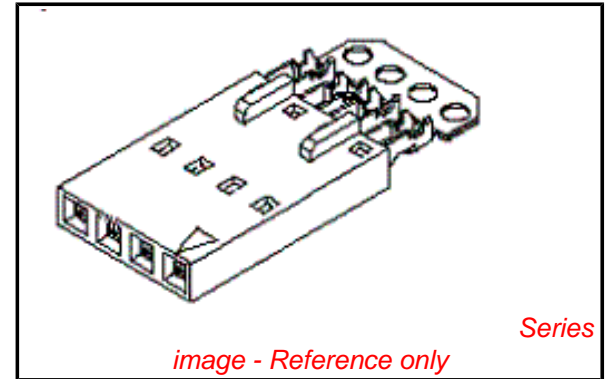
Physical

Circuits (Loaded) 15
 Color - Resin Black
 Durability (mating cycles max) 50
 Entry Angle Vertical
 Flammability 94V-0
 Lock to Mating Part None
 Material - Metal Phosphor Bronze
 Material - Plating Mating Gold
 Material - Plating Termination Tin
 Material - Resin Polyester Alloy
 Number of Rows 1
 PCB Retention None
 Packaging Type Tube
 Pitch - Mating Interface (in) 0.100 In
 Pitch - Mating Interface (mm) 2.54 mm
 Plating min: Mating (µin) 30
 Plating min: Mating (µm) 0.75
 Plating min: Termination (µin) 75
 Plating min: Termination (µm) 1.875
 Polarized to Mating Part Yes
 Stackable Yes
 Surface Mount Compatible (SMC) N/A
 Temperature Range - Operating -40°C to +105°C
 Termination Interface: Style IDT or Pierce
 Wire Insulation Diameter 1.35mm (.053") max.
 Wire Size AWG 24
 Wire/Cable Type Discrete Wire, Ribbon Cable

Electrical

Current - Maximum per Contact 3A
 Voltage - Maximum 250V

Material Info



EU RoHS
ELV and RoHS
Compliant
REACH SVHC
Not Reviewed
Halogen-Free
Status
Not Reviewed

China RoHS



Need more information on product environmental compliance?

Email productcompliance@molex.com
 For a multiple part number RoHS Certificate of Compliance, [click here](#)

Please visit the [Contact Us](#) section for any non-product compliance questions.

Search Parts in this Series

[70400Series](#)

Mates With

[70004](#) Interim Clip (Single Row), [70013](#) Interim Clip (Dual Row)

Use With

[7307](#) Tinned 28AWG, [7767](#) Topcoat 28AWG, [24241](#) Tinned 26AWG, [8996](#) Topcoat 26AWG, [24226](#) Tinned 24AWG, [8997](#) Topcoat 24AWG, [24369](#) High Flex 26AWG, [24389](#) High Flex 24AWG

Application Tooling | FAQ

Tooling specifications and manuals are found by selecting the products below. Crimp Height Specifications are then contained in the Application Tooling Specification document.

Global

| Description | Product # |
|--------------------|----------------------------|
| Hawk Semi- | 0011201337 |
| Automatic Discrete | |

Old Part Number

70400-1134

Reference - Drawing Numbers

Product Specification

Sales Drawing

PS-70400

SDA-70400-1121-1144

Wire Terminator for
SL - Rebuilt US*

Hawk™ Ribbon 0623003000

Cable Terminator for
SL without Break-off

Hawk™ Semi- 0623004900

Automatic Discrete

Wire Terminator

for SL - Rebuilt CE

Approved*

Hawk™ Flat Flex 0623005200

Cable Terminator for
SL with Break-off

Hawk™ Ribbon 0623005300

Cable Terminator

with for SL Break-off

IDT Discrete 0621000700

Handtool Module for

SL™

Hawk™ Semi- 0623003100

Automatic Discrete

Wire Terminator for

SL

This document was generated on 05/21/2010

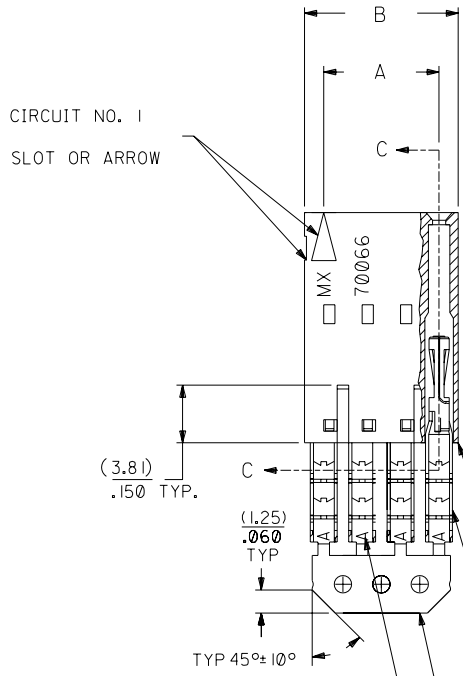
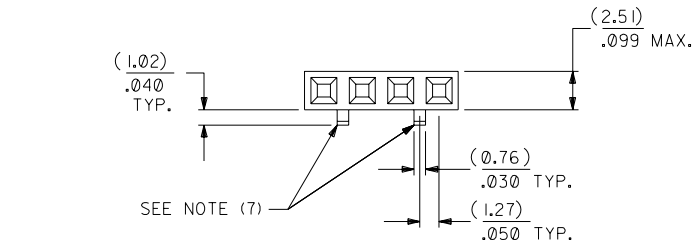
PLEASE CHECK WWW.MOLEX.COM FOR LATEST PART INFORMATION

OPTION D

NOTES:

- 1) TO BE USED WITH (24) AWG. STRANDED WIRE WITH (1.35)/.053 DIA. MAX. INSULATION.
- 2) SEE CHART FOR CIRCUIT SIZES.
- 3) STANDARD PACKAGING PER PK-70873-0001. OPTIONAL PACKAGING MAY BE AVAILABLE , REQUEST DWG. PK-70400
- 4) PARTS STACKABLE END TO END ON (2.54)/.100 CENTERS.
- 5) REFER TO PRODUCT SPECIFICATION: PS-70400.
- 6) SEE DWG. SDA-70400-**** (SHT. 5) FOR OPTIONAL HOUSING DETAILS.
- 7) 4 CIRCUIT SHOWN. 3 - 25 CKT'S. HAVE (2) RIBS.
- 8) TO MATE WITH MOLEX PART NO'S.: 70004-****, 70013-****

9) 2 CIRCUIT ASSEMBLIES SUPPLIED AS GROUPED PAIRS.

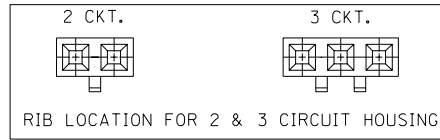


| I.D. SLOT CODE TO WIRE GAUGE CHART | |
|------------------------------------|------------|
| I.D. SLOT CODE | WIRE GAUGE |
| A | 24 AWG. |

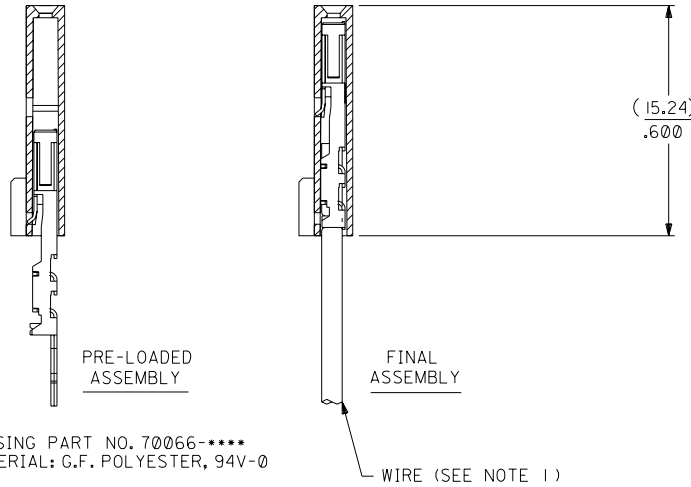
| PLATING CODE (STRIPE ON CARRIER STRIP) | |
|--|-------|
| PLATING | COLOR |
| 30 GOLD | RED |

30 GOLD - .000030 MIN. GOLD IN SELECT AREA WITH .000075 MIN. TIN IN SELECT AREA OVER .000050 MIN. NICKEL OVER-ALL.

*THE PRIMARY SHIPPING CARTON WILL BE LABELED "COMPLIANT TO ROHS DIRECTIVE 2002/95/EC AND ELV ANNEX II OF DIRECTIVE 2000/53/EC". CARTONS WITHOUT THIS LABEL MAY CONTAIN PRODUCT WITH LEAD.



SECTION C-C



HOUSING PART NO. 70066-**** MATERIAL: G.F. POLYESTER, 94V-0

TERMINAL PART NO. 70028-**** MATERIAL: PHOSPHOR BRONZE PLATING PER ES-88-***

WIRE (SEE NOTE 1)

| CKT. SIZE | A | B | EDP. NO. | ENG. NO. |
|-----------|--------------------|--------------------|------------|--------------|
| 2 | (2.54) .100 | (5.05) .199 | 14-56-4021 | A-70400-1121 |
| 3 | (5.08) .200 | (7.59) .299 | 14-56-4031 | A-70400-1122 |
| 4 | (7.62) .300 | (10.13) .399 | 14-56-4041 | A-70400-1123 |
| 5 | (10.16) .400 | (12.67) .499 | 14-56-4051 | A-70400-1124 |
| 6 | (12.70) .500 | (15.21) .599 | 14-56-4061 | A-70400-1125 |
| 7 | (15.24) .600 | (17.75) .699 | 14-56-4071 | A-70400-1126 |
| 8 | (17.78) .700 | (20.29) .799 | 14-56-4081 | A-70400-1127 |
| 9 | (20.32) .800 | (22.83) .899 | 14-56-4091 | A-70400-1128 |
| 10 | (22.86) .900 | (25.37) .999 | 14-56-4101 | A-70400-1129 |
| 11 | (25.54) 1.000 | (27.91) 1.099 | 14-56-4111 | A-70400-1130 |
| 12 | (27.94) 1.100 | (30.45) 1.199 | 14-56-4121 | A-70400-1131 |
| 13 | (30.48) 1.200 | (32.99) 1.299 | 14-56-4131 | A-70400-1132 |
| 14 | (33.02) 1.300 | (35.53) 1.399 | 14-56-4141 | A-70400-1133 |
| 15 | (35.56) 1.400 | (38.07) 1.499 | 14-56-4151 | A-70400-1134 |
| 16 | (38.01) 1.500 | (40.61) 1.599 | 14-56-4161 | A-70400-1135 |
| 17 | (40.64) 1.600 | (43.15) 1.699 | 14-56-4171 | A-70400-1136 |
| 18 | (43.18) 1.700 | (45.69) 1.799 | 14-56-4181 | A-70400-1137 |
| 19 | (45.72) 1.800 | (48.23) 1.899 | 14-56-4191 | A-70400-1138 |
| 20 | (48.26) 1.900 | (50.77) 1.999 | 14-56-4201 | A-70400-1139 |
| 21 | (50.80) 2.000 | (53.31) 2.099 | 14-56-4211 | A-70400-1140 |
| 22 | (53.34) 2.100 | (55.85) 2.199 | 14-56-4221 | A-70400-1141 |
| 23 | (55.88) 2.200 | (58.39) 2.299 | 14-56-4231 | A-70400-1142 |
| 24 | (58.42) 2.300 | (60.93) 2.399 | 14-56-4241 | A-70400-1143 |
| 25 | (60.96) 2.400 | (63.47) 2.499 | 14-56-4251 | A-70400-1144 |

| LTR. | REVISIONS | LTR. | REVISIONS |
|------|---|------|---|
| E | LEAD FREE UCP2004-1769 RWHITE 04/03/17 | C | REVISE PER ECR #U80110 2/3/88 MJM |
| DI | ADD CARRIER CHAMF ECN #UDT1998-0280 05/20/98 LMCGRATH | B | REDRAWN ON CAD ECR# 8842 5/8/86 W.Z. |
| | | D | REVISED PER ECR NO. U82110 10-17-88 AAB |

| DIMENSIONS SHOWN (METRIC) INCH | |
|---|---------------|
| UNLESS OTHERWISE SPECIFIED TOLERANCES: ANGULAR ± 1/2° | |
| 3 PLACE | ± .010 |
| 2 PLACE | ± .014 ± 0.25 |
| 1 PLACE | --- ± 0.35 |

| MFG. SH. REV. | |
|---|--|
| REVISE ONLY ON CAD SYSTEM | |
| TITLE ASSEMBLY, SL CONNECTOR (SINGLE ROW- (2.54)/.100 GRID) | |
| MOLEX INCORPORATED SHEET NO. DATE 10/10/84 | |
| PART NO. SDA-70400-1121-1144 | |
| SEE CHART | |
| FILE NAME S10400DX7 | THIS DRAWING CONTAINS INFORMATION THAT IS PROPRIETARY TO MOLEX INC. AND SHOULD NOT BE USED WITHOUT WRITTEN PERMISSION. |