

PLEASE CHECK WWW.MOLEX.COM FOR LATEST PART INFORMATION

Part Number: [0399400311](#)
Status: **Active**
Description: 5.08mm (.200") Pitch Beau™ EuroMate™ Pluggable PCB Terminal Block, Dual Level, 270° Wire Entry, 11 Circuits

Documents:

[Drawing \(PDF\)](#) [RoHS Certificate of Compliance \(PDF\)](#)
[Product Specification PS-39940-001 \(PDF\)](#)

Agency Certification

UL E48521

General

| | |
|-----------------------------|------------------------|
| Product Family | Terminal Blocks |
| Series | 39940 |
| Application | Wire-to-Board |
| Comments | Gold plating available |
| Component Type | Plug |
| Product Literature Order No | USA-264 |
| Product Name | EuroMate™ Pluggable |
| Type | Euro Block |

Physical

| | |
|-------------------------------|------------------------|
| Circuits (Loaded) | 11 |
| Color - Resin | Black |
| Entry Angle | Horizontal |
| Flammability | 94V-0 |
| Lock to Mating Part | None |
| Material - Resin | Nylon |
| Number of Rows | 2 |
| Orientation | Vertical |
| Panel Mount | No |
| Pitch - Mating Interface (in) | 0.200 In |
| Pitch - Mating Interface (mm) | 5.08 mm |
| Polarized to Mating Part | Yes |
| Stackable | No |
| Temperature Range - Operating | 130°C |
| Termination Interface: Style | Screw or Lug |
| Wire Size AWG | 12, 14, 16, 18, 20, 22 |
| Wire Size mm² | 0.50 - 2.50 |

Electrical

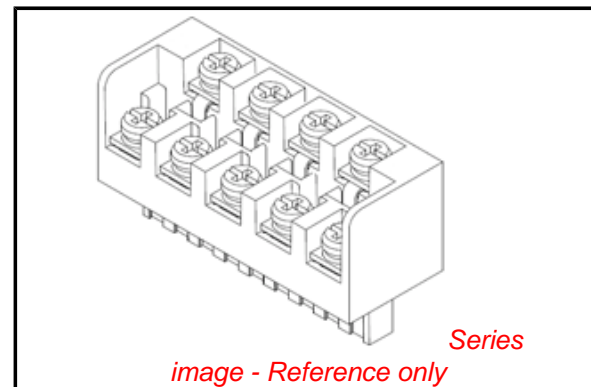
| | |
|-------------------------------|------|
| Current - Maximum per Contact | 15A |
| Voltage - Maximum | 300V |

Material Info

Old Part Number 940911

Reference - Drawing Numbers

| | |
|-----------------------|--------------|
| Product Specification | PS-39940-001 |
| Sales Drawing | SD-39940-005 |



EU RoHS

ELV and RoHS Compliant
REACH SVHC
 Not Reviewed
Halogen-Free Status
 Not Reviewed

China RoHS



Need more information on product environmental compliance?

Email productcompliance@molex.com
 For a multiple part number RoHS Certificate of Compliance, [click here](#)

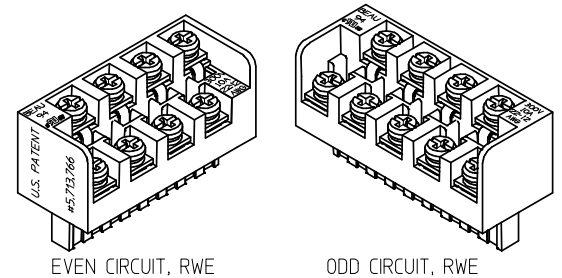
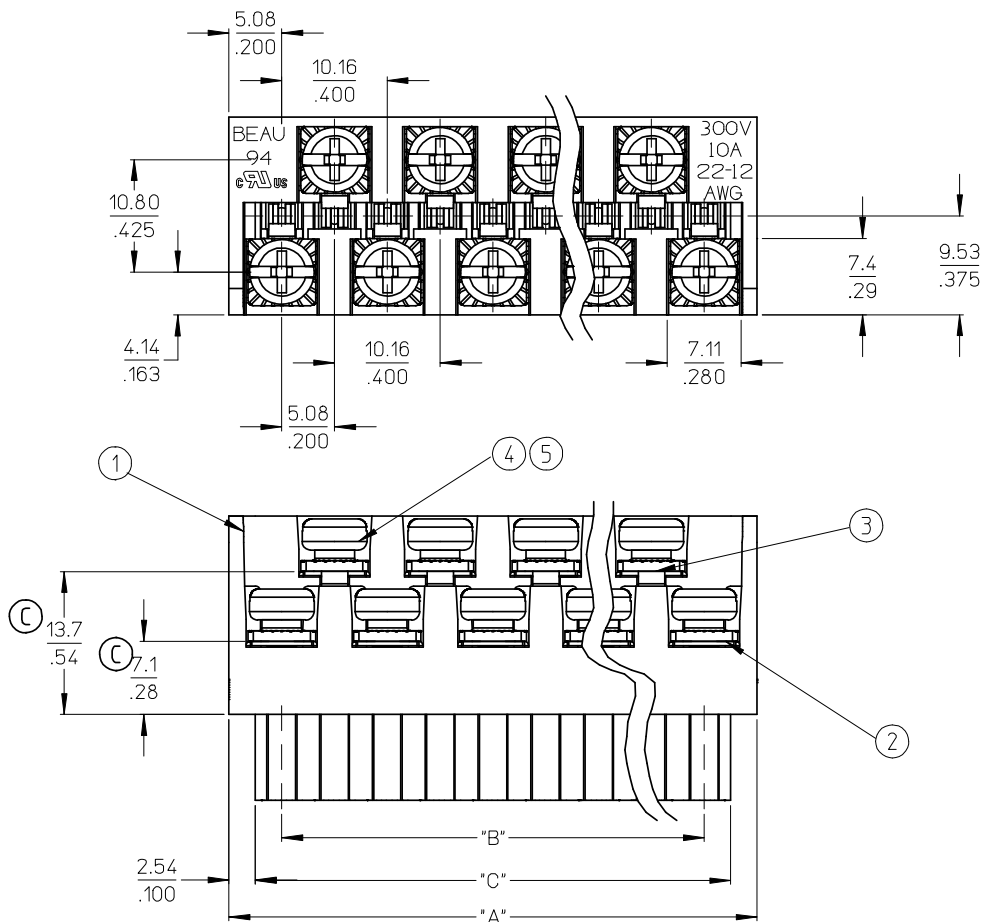
Please visit the [Contact Us](#) section for any non-product compliance questions.

Search Parts in this Series

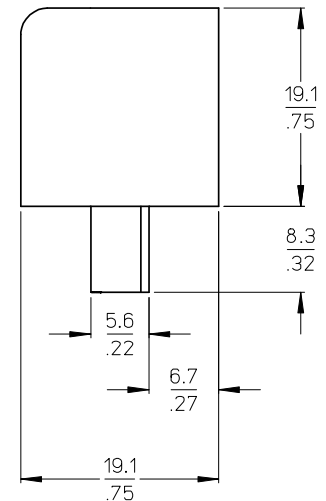
[39940Series](#)

Mates With

[39531-0011](#) , [39531-1011](#) , [39532-0011](#) , [39532-1011](#)



AUXILIARY VIEWS
SCALE 1:1



- NOTES:
1. MATERIAL: SEE TABLE
 2. FINISHES: SEE TABLE
 3. PRODUCT SPECIFICATION: NOT REQUIRED
 4. PACKAGING: NOT REQUIRED
 5. MATES WITH: MOST 5.08 (.200) PIN HEADERS
 6. "XX" REFERS TO THE QUANTITY OF CIRCUITS
 7. ROHS COMPLIANT

ODD CIRCUIT CONFIGURATION SHOWN

| | | | | | |
|------|-----------------------------------|----------------------------------|-------------------------|---------------|---------------|
| 5 | XX | XX | SCREW, M3.5 X .280 | STEEL | ZINC CHROMATE |
| 4 | XX | XX | NUT, M3.5, HEX | STEEL | ZINC CHROMATE |
| 3 | XX/2 | (XX-1)/2 | REAR ROW TERM. (LONG) | PHOS. BRONZE | HOT TIN DIP |
| 2 | XX/2 | (XX+1)/2 | FRONT ROW TERM. (SHORT) | PHOS. BRONZE | HOT TIN DIP |
| 1 | 1 | 1 | BARRIER | THERMOPLASTIC | BLACK |
| ITEM | QTY. (EVEN NO. OF CIRCUITS) | QTY. (ODD NO. OF CIRCUITS) | DESCRIPTION | MATERIAL | FINISH |

REVISED & REDRAWN
EC NO: WNA2008-0391
DRWN: JENC INAS 2008/07/01
CHKD: CYORK 2008/07/02
APPR: JMACNEIL 2008/07/07

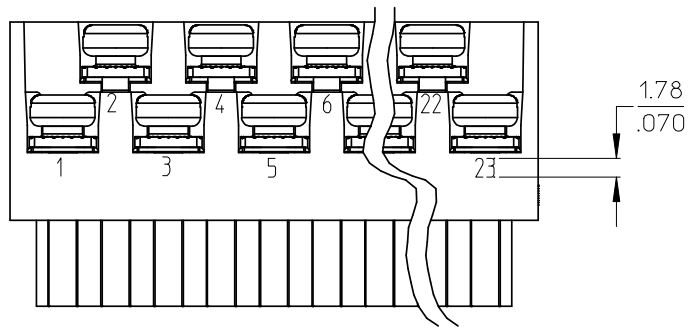
QUALITY SYMBOLS
▽=0
▽=0

| GENERAL TOLERANCES (UNLESS SPECIFIED) | |
|--|--------------|
| | mm INCH |
| 4 PLACES | ± --- ± --- |
| 3 PLACES | ± --- ± .005 |
| 2 PLACES | ± 0.13 ± .01 |
| 1 PLACE | ± 0.3 ± --- |
| ANGULAR ± 2 ° | |
| DRAFT WHERE APPLICABLE MUST REMAIN WITHIN DIMENSIONS | |

| DIMENSION STYLE | |
|-----------------|---|
| MM/IN | |
| DRAWN BY | DATE |
| J. FARMER | 2004/12/03 |
| CHECKED BY | DATE |
| R. KEMP | 2004/12/03 |
| APPROVED BY | DATE |
| GHR | 2004/12/03 |
| MATERIAL NO. | DOCUMENT NO. |
| SEE SHEET 2 | SD-39940-005 |
| SIZE B | THIS DRAWING CONTAINS INFORMATION THAT IS PROPRIETARY TO MOLEX INCORPORATED AND SHOULD NOT BE USED WITHOUT WRITTEN PERMISSION |

| | | |
|--|--------------|------------------------|
| SCALE | DESIGN UNITS | THIRD ANGLE PROJECTION |
| 2:1 | INCH | |
| TITLE | | |
| 5.08/.200 PLUG ASSY, FWE WITH CLOSED ENDS (9409XX) | | |
| MOLEX MOLEX INCORPORATED | | |
| DOCUMENT NO. | | SHEET NO. |
| SD-39940-005 | | 1 OF 2 |

| NO. OF CIRC. "XX" | "A" DIM. | | "B" DIM. | | "C" ^{+0.00} _{-.25} [^{+0.000} _{-.010}] | | MATERIAL NO. (STANDARD) |
|-------------------|----------|--------|----------|---------|---|--------|-------------------------|
| 03 | 20.3 | [.80] | 10.16 | [.400] | 15.2 | [.60] | 399400303 |
| 04 | 25.4 | [1.00] | 15.24 | [.600] | 20.3 | [.80] | 399400304 |
| 05 | 30.5 | [1.20] | 20.32 | [.800] | 25.4 | [1.00] | 399400305 |
| 06 | 35.6 | [1.40] | 25.40 | [1.000] | 30.5 | [1.20] | 399400306 |
| 07 | 40.6 | [1.60] | 30.48 | [1.200] | 35.6 | [1.40] | 399400307 |
| 08 | 45.7 | [1.80] | 35.56 | [1.400] | 40.6 | [1.60] | 399400308 |
| 09 | 50.8 | [2.00] | 40.64 | [1.600] | 45.7 | [1.80] | 399400309 |
| 10 | 55.9 | [2.20] | 45.72 | [1.800] | 50.8 | [2.00] | 399400310 |
| 11 | 61.0 | [2.40] | 50.80 | [2.000] | 55.9 | [2.20] | 399400311 |
| 12 | 66.0 | [2.60] | 55.88 | [2.200] | 61.0 | [2.40] | 399400312 |
| 13 | 71.1 | [2.80] | 60.96 | [2.400] | 66.0 | [2.60] | 399400313 |
| 14 | 76.2 | [3.00] | 66.04 | [2.600] | 71.1 | [2.80] | 399400314 |
| 15 | 81.3 | [3.20] | 71.12 | [2.800] | 76.2 | [3.00] | 399400315 |
| 16 | 86.4 | [3.40] | 76.20 | [3.000] | 81.3 | [3.20] | 399400316 |
| 17 | 91.4 | [3.60] | 81.28 | [3.200] | 86.4 | [3.40] | 399400317 |
| 18 | 96.5 | [3.80] | 86.36 | [3.400] | 91.4 | [3.60] | 399400318 |
| 19 | 101.6 | [4.00] | 91.44 | [3.600] | 96.5 | [3.80] | 399400319 |
| 20 | 106.7 | [4.20] | 96.52 | [3.800] | 101.6 | [4.00] | 399400320 |
| 21 | 111.8 | [4.40] | 101.60 | [4.000] | 106.7 | [4.20] | 399400321 |
| 22 | 116.9 | [4.60] | 106.68 | [4.200] | 111.8 | [4.40] | 399400322 |
| 23 | 121.9 | [4.80] | 111.76 | [4.400] | 116.8 | [4.60] | 399400323 |
| 24 | 127.0 | [5.00] | 116.84 | [4.600] | 121.9 | [4.80] | 399400324 |



OPTIONAL
10A IMPRINTING
(ODD CIRCUIT CONFIGURATION SHOWN)

| | | | | | | | | |
|---|-------------------------------|---|--------------------|-----------------|---|----------------------|------------------------|--|
| SEE SHEET ONE EEC NO: WNA2008-0391 DRWN: JENCINAS 2008/07/01 CHKD: CYORK 2008/07/02 APPR: JMACNEIL 2008/07/07 | QUALITY SYMBOLS ▽=0 ◻=0 | GENERAL TOLERANCES (UNLESS SPECIFIED) | | DIMENSION STYLE | SCALE | DESIGN UNITS | THIRD ANGLE PROJECTION | |
| | | | | MM/IN | 2:1 | INCH | | |
| | | | | mm | INCH | DRAWN BY DATE | | |
| | | | | ANGULAR ± 2 ° | | J. FARMER 2004/12/03 | | |
| | | 4 PLACES ± --- ± --- | CHECKED BY DATE | | TITLE 5.08/.200 PLUG ASSY, FWE WITH CLOSED ENDS (9409XX) | | | |
| | | 3 PLACES ± --- ± .005 | R. KEMP 2004/12/03 | | | | | |
| | | 2 PLACES ± 0.13 ± .01 | APPROVED BY DATE | | MOLEX INCORPORATED | | | |
| | | 1 PLACE ± 0.3 ± --- | GHR 2004/12/03 | | | | | |
| | | DRAFT WHERE APPLICABLE MUST REMAIN WITHIN DIMENSIONS | | MATERIAL NO. | DOCUMENT NO. | SHEET NO. | | |
| | | | | SEE CHART | SD-39940-005 | 2 OF 2 | | |
| | | THIS DRAWING CONTAINS INFORMATION THAT IS PROPRIETARY TO MOLEX INCORPORATED AND SHOULD NOT BE USED WITHOUT WRITTEN PERMISSION | | | | | | |