

# New Jersey Semi-Conductor Products, Inc.

20 STERN AVE.  
 SPRINGFIELD, NEW JERSEY 07081  
 U.S.A.

TELEPHONE: (973) 376-2922  
 (212) 227-6005  
 FAX: (973) 376-8960

## PARAMETERS

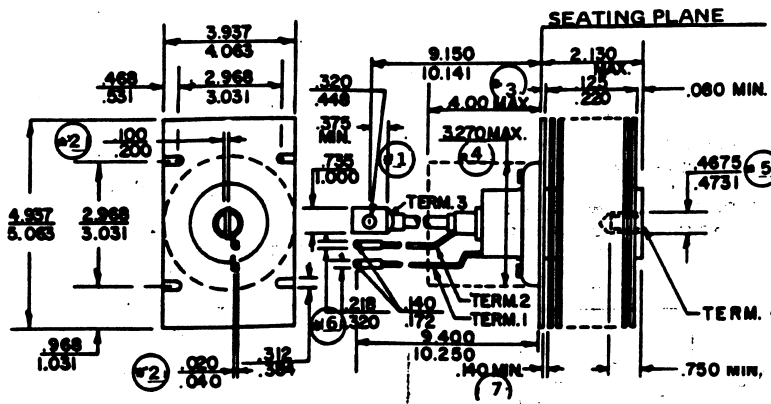
2N3537

SCR, V(DRM) = 700 V TO 799.9 V

Description: SCR, V(DRM) = 700 V to 799.9 V

Manufacturer.....	
Mil/High-Rel? (Y/N).....	
V(drm) Max.....	700
It(stat) Max. (A).....	250i
@Temp. (test) (xC).....	20
Supp Curr. I(TSM).....	5.0k
Firing Char-Igt Max.....	400
Firing Char-Vgt Max.....	4.
Id(off) Max. (A).....	15m
@Temp. (test) (xC).....	125
I(h) Max. (A).....	
V(T) Max.....	1.9
@It (A).....	250
Dv/Dt Worst Case.....	
t(switch) Off Typ. Time (S)...	
@It (test) (A).....	
t(switch) Off Typ. Time (S)...	
Oper. Temp (xC) Min.....	-40
Oper. Temp (xC) Max.....	125#
Pkg Style.....	T0-109
Surface Mounted (Y/N).....	N

# Case Temperature 1 It (Average) 2 It(rms) Measured at < 25xC



### NOTES:

1. Minimum flat.
2. Contour and orientation of terminal flats are undefined.
3. Seated height with lead bent at right angles.
4. The body of the device with the exception of heat sink and flexible leads lies within the cylinder defined by the dotted outline.
5. Pitch diameter of threads — 1/2-20 UNF 2B (ASA Bu1.1-1960).
6. Parallel, twisted or coaxial flexible leads for terminals 1 and 2 are identified by color for specific applications. Coaxial shielded lead has shield as terminal 2.
7. When dimensions less than .180 (4.5mm) are used, clearance in the second fin will be provided.



Quality Semi-Conductors