

FEATURES AND SPECIFICATIONS

Features and Benefits

- Fully shrouded to protect pins during mating/unmating
- Polarizing slots guide front ribs of mating connector to prevent pin damage
- Latch window retains positive lock after mating
- Press-fit peg provides additional retention to PCB during soldering

Reference Information

Product Specification: PSX-71349

Packaging Type: Tube

Mates with: C-Grid Receptacles, 70013 Version B interim clip and 70450A crimp housing

Designed in: Inches

Electrical

Electrical Voltage: 250V

Current: 3.0A

Contact Resistance: 15mΩ max.

Dielectric Withstanding Voltage: 1500V

Insulation Resistance: 1000 MΩ min.

Mechanical

Contact Retention to Housing: 17.79N (4 lb.)

Durability: Tin/Lead—25 cycles

Gold—50 cycles

Physical

Physical Housing: Black glass-filled LCP, UL 94V-0

Contact: Phosphor Bronze

Plating: See Table

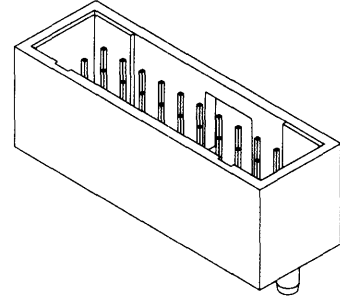
Operating Temperature: -40 to +105°C

molex® 2.54 (.100") Pitch
C-Grid®

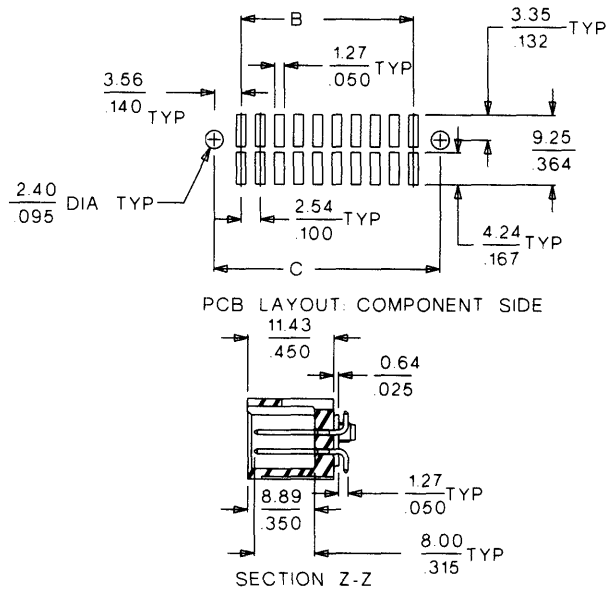
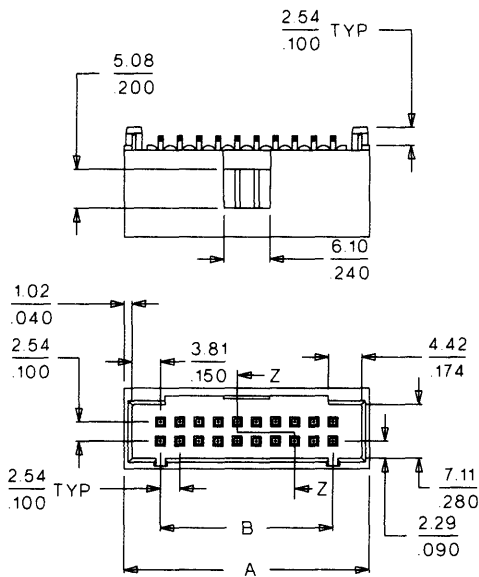
Shrouded Header

71349

**Dual Row, SMT
Vertical With Pegs**



CATALOG DRAWING (FOR REFERENCE ONLY)



ORDERING INFORMATION AND DIMENSIONS

Circuits	Order No.			Dimension		
	150 Tin/Lead	15 Min. Gold	30 Min. Gold	A	B	C
6	71349-2001	71349-2035	71349-2069	14.73 (.580)	5.08 (.200)	12.19 (.480)
8	71349-2002	71349-2036	71349-2070	17.27 (.680)	7.62 (.300)	14.73 (.580)
10	71349-2003	71349-2037	71349-2071	19.81 (.780)	10.16 (.400)	17.27 (.680)
12	71349-2004	71349-2038	71349-2072	22.35 (.880)	12.70 (.500)	19.81 (.780)
14	71349-2005	71349-2039	71349-2073	24.89 (.980)	15.24 (.600)	22.35 (.880)
16	71349-2006	71349-2040	71349-2074	27.43 (1.080)	17.78 (.700)	24.89 (.980)
18	71349-2007	71349-2041	71349-2075	29.97 (1.180)	20.32 (.800)	27.43 (1.080)
20	71349-2008	71349-2042	71349-2076	32.51 (1.280)	22.86 (.900)	29.97 (1.180)
22	71349-2009	71349-2043	71349-2077	35.05 (1.380)	25.40 (1.000)	32.51 (1.280)
24	71349-2010	71349-2044	71349-2078	37.59 (1.480)	27.94 (1.100)	35.05 (1.380)
26	71349-2011	71349-2045	71349-2079	40.13 (1.580)	30.48 (1.200)	37.59 (1.480)
28	71349-2012	71349-2046	71349-2080	42.67 (1.680)	33.02 (1.300)	40.13 (1.580)
30	71349-2013	71349-2047	71349-2081	45.21 (1.780)	35.56 (1.400)	42.67 (1.680)
32	71349-2014	71349-2048	71349-2082	47.75 (1.880)	38.10 (1.500)	45.21 (1.780)
34	71349-2015	71349-2049	71349-2083	50.29 (1.980)	40.64 (1.600)	47.75 (1.880)
36	71349-2016	71349-2050	71349-2084	52.83 (2.080)	43.18 (1.700)	50.29 (1.980)
38	71349-2017	71349-2051	71349-2085	55.37 (2.180)	45.72 (1.800)	52.83 (2.080)

Circuits	Order No.			Dimension		
	150 Tin/Lead	15 Min. Gold	30 Min. Gold	A	B	C
40	71349-2018	71349-2052	71349-2086	57.91 (2.280)	48.26 (1.900)	55.37 (2.180)
42	71349-2019	71349-2053	71349-2087	60.45 (2.380)	50.80 (2.000)	57.91 (2.280)
44	71349-2020	71349-2054	71349-2088	62.99 (2.480)	53.34 (2.100)	60.45 (2.380)
46	71349-2021	71349-2055	71349-2089	65.53 (2.580)	55.88 (2.200)	62.99 (2.480)
48	71349-2022	71349-2056	71349-2090	68.07 (2.680)	58.42 (2.300)	65.53 (2.580)
50	71349-2023	71349-2057	71349-2091	70.61 (2.780)	60.96 (2.400)	68.07 (2.680)
52	71349-2024	71349-2058	71349-2092	73.15 (2.880)	63.50 (2.500)	70.61 (2.780)
54	71349-2025	71349-2059	71349-2093	75.69 (2.980)	66.04 (2.600)	73.15 (2.880)
56	71349-2026	71349-2060	71349-2094	78.23 (3.080)	68.58 (2.700)	75.69 (2.980)
58	71349-2027	71349-2061	71349-2095	80.77 (3.180)	71.12 (2.800)	78.23 (3.080)
60	71349-2028	71349-2062	71349-2096	83.31 (3.280)	73.66 (2.900)	80.77 (3.180)
62	71349-2029	71349-2063	71349-2097	85.85 (3.380)	76.20 (3.000)	83.31 (3.280)
64	71349-2030	71349-2064	71349-2098	88.39 (3.480)	78.74 (3.100)	85.85 (3.380)
66	71349-2031	71349-2065	71349-2099	90.93 (3.580)	81.28 (3.200)	88.39 (3.480)
68	71349-2032	71349-2066	71349-2100	93.47 (3.680)	83.82 (3.300)	90.93 (3.580)
70	71349-2033	71349-2067	71349-2101	96.01 (3.780)	86.36 (3.400)	93.47 (3.680)
72	71349-2034	71349-2068	71349-2102	98.55 (3.880)	88.90 (3.500)	96.01 (3.780)