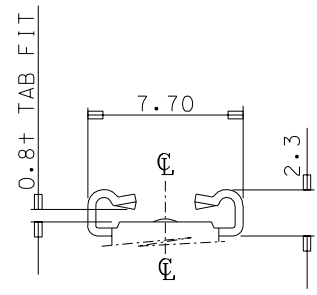
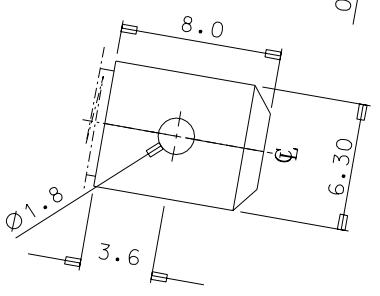
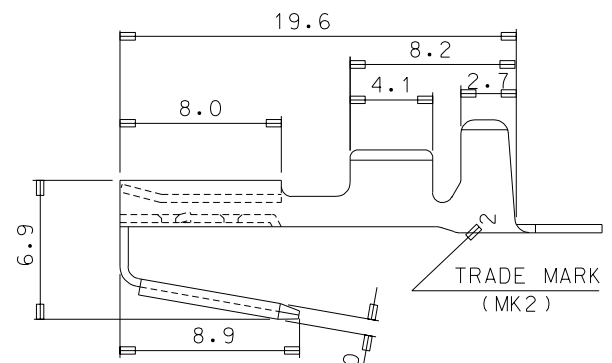
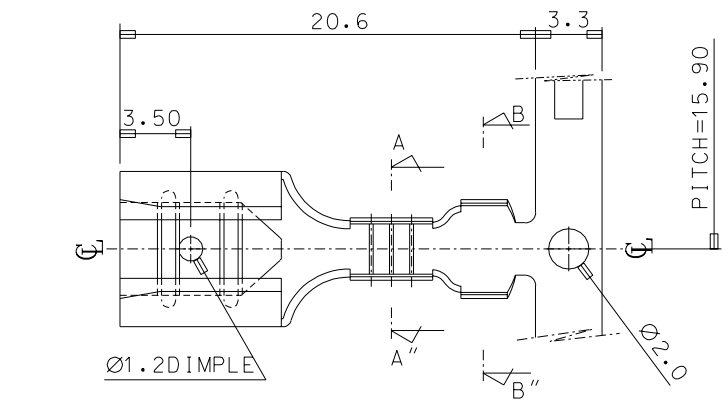
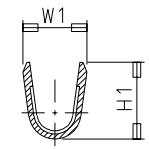


DO NOT SCALE DRAWING DIMENSION IN METRIC

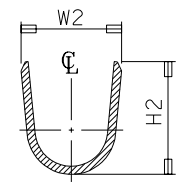
PROJECT NO. SIMILAR ITEM DWG. NO. SD 35725-\*910



VIEW "D"



SECTION A-A"



SECTION B-B"

NOTES

1. MATERIAL : BRASS 0.40±0.03 THK'
2. FINISH : POST-TIN PLATING
3. RECOMMENDED LENGTH OF WIRE STRIP IS 5.3-5.8

MATERIAL NO.	PART NO.	W1	H1	W2	H2	WIRE	INSUL.DIA.
357253910	35725-3910	3.1	3.8	4.9	5.6	AWG# 18-14	MAX.Ø3.6
357254910	35725-4910			6.5	6.35		
357255910	35725-5910	4.0	4.2			AWG#12	MAX.Ø4.6

REVISED	EC NO. KDR2003-0216	QUALITY SYMBOLS MAJOR = 0 CRITICAL = 0	GENERAL TOLERANCES: (UNLESS SPECIFIED)		SCALE 4:1	DESIGN UNITS <input checked="" type="checkbox"/> mm <input type="checkbox"/> INCH	THIRD ANGLE PROJECTION	DIMENSIONS: <input type="checkbox"/> mm <input type="checkbox"/> INCH <input checked="" type="checkbox"/> mm ONLY		SHT	REV	
	DRWN: W.Y.YANG 03/02/22		4 PLACES ±	3 PLACES ±	2 PLACES ±0.30	1 PLACE ±0.20		ANGULAR: ± 1°	DRAWN BY & DATE W.Y.YANG 93/06/26		REVISIONS	
B	CHK: W.Y.YANG	DESCRIPTION	DRAFT WHERE APPLICABLE MUST REMAIN WITHIN DIMENSIONS		CHECKED BY & DATE B.K.CHOI 93/06/26		TITLE: .250 PIGGY BACK					
	APPR: C.W.LEE		THIS DRAWING CONTAINS INFORMATION THAT IS PROPRIETARY TO MOLEX INCORPORATED AND SHOULD NOT BE USED WITHOUT WRITTEN PERMISSION.		APPROVED BY & DATE C.W.LEE 93/06/26		MATERIAL NO. SEE TABLE		DRAWING NO. SD-35725-*910		SHEET NO. 1 OF 1	
					CAD FILENAME S7255910.DGN		MATERIAL NO. SEE TABLE		DRAWING NO. SD-35725-*910		SIZE B	