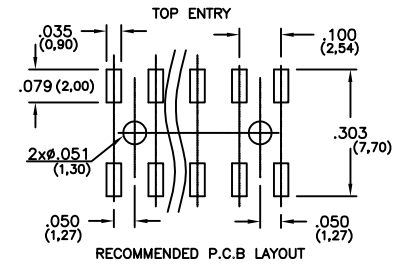
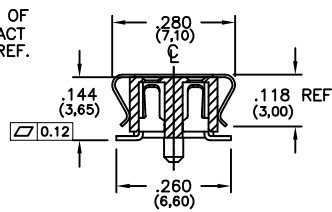
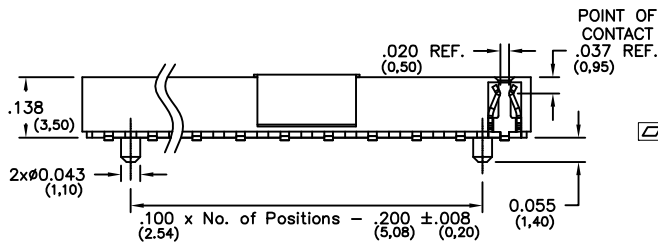
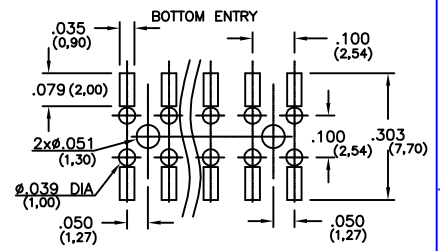
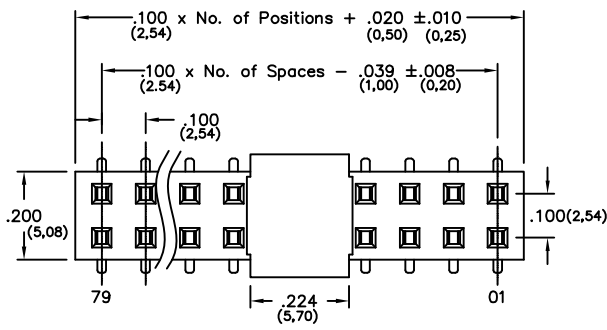


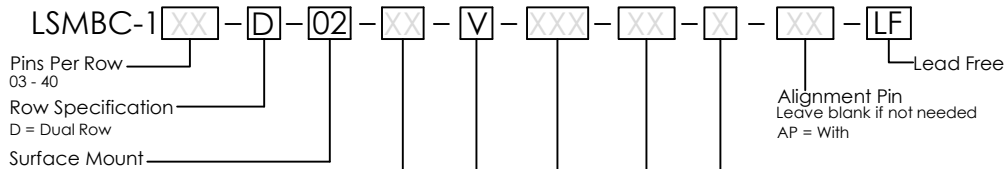
Major League Electronics .100cl Low Profile Surface Mount Box Contact - Vertical



RECOMMENDED P.C.B LAYOUT

Tails may be clipped to achieve desired pin length

Ordering Information



| Plating Options | |
|--|----|
| 30µ Gold on Contact Area / Matte Tin on Tail | H |
| Matte Tin all Over | T |
| 10µ Gold on Contact Area / Matte Tin on Tail | GT |
| 10µ Gold on Contact Area / Flash on Tail | G |
| Gold Flash over Entire Pin | F |

Packing Information
 TR-P = Tape and Reel with Plastic Pick and Place pad
 TB-P = Tube with Plastic Pick and Place pad
 TB-0 = Tube without Pick and Place pad
 If left blank, packaging at MLE's discretion
 Pad may be metal, mylar or plastic

Polarized Position
 Leave blank if not needed
 If required, specify empty pin position, e.g. 012 for Pin 12

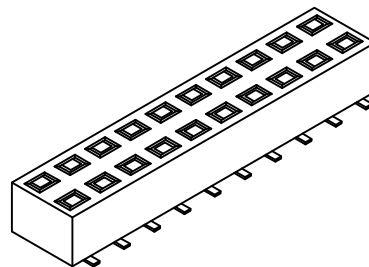
Vertical

Specifications

Insertion Depth: .070 (1,78) to .135 (3,43)
 .102 (2,59) for bottom entry
 Insertion Force - Per Contact - H Plating:
 2oz. (0,56N) avg with .025 (0,64mm) sq. pin
 Withdrawal Force - Per Contact - H Plating:
 1.6oz. (0,44N) avg with .025 (0,64mm) sq. pin
 Current Rating: 3.0 Ampere
 Insulation Resistance: 1000MΩ Min.
 Dielectric Withstanding: 600V AC
 Contact Resistance: 20 mΩ Max.
 Operating Temperature: -40°C to + 105°C
 Max. Process Temperature:
 Peak: 260°C up to 20 secs.
 Process: 230°C up to 30 secs.
 Reflow: 260°C up to 10 secs.

Materials

Contact Material: Phosphor Bronze
 Insulator Material: Polyester, UL94V-0
 LCP+30%G.F., Black
 Plating: Au or Sn over 50µ" (1,27) Ni



Mates with:

BSTC, TSHCR,
 BSTCM, TSHCRE,
 BSTCR, TSHCRSM,
 BSTCRSM, TSHR,
 BSTS, TSHRE,
 LBSTCM, TSHS,
 LTSHCR, TSHSCM,
 LTSHCRE, TSHSM,
 LTSHR, ULTSHSM,
 LTSHRE, ULTSHC,
 LTSHSM, ULTSHCR,
 TSHC,

Products cut to specific sizes are uncancellable/nonreturnable

Parts are subject to change without notice

UNLESS OTHERWISE SPECIFIED
 DIMENSIONS IN INCHES (MM)
 TOLERANCES ARE:

NO PLACE DECIMALS ±0.30
 ONE PLACE DECIMALS ±0.25
 TWO PLACE DECIMALS ±0.15
 THREE PLACE DECIMALS ±0.10

ANGLES
 NO PLACE DECIMALS ±5.0°
 ONE PLACE DECIMALS ±3.0°
 TWO PLACE DECIMALS ±2.0°
 THREE PLACE DECIMALS ±1.0°

LSMBC-1-DV SERIES

.100cl Low Profile - Vertical
 Surface Mount Box Contact

29 JAN 07

Scale
 NTS



4235 Earnings Way, New Albany, Indiana, 47150, USA
 1-800-782-3486 (USA/Canada/Mexico)
 Tel: 812-944-7244
 Fax: 812-944-7268
 E-mail: mle@mlelectronics.com
 Web: www.mlelectronics.com

Revision
 C

Sheet
 1/2

Revisions

Revision B - (10th Oct 2008)

Release of new drawing featuring alignment pin,
Change to tolerances and specification

Revision C - (21st Apr 2009)

Current Rating changed from 1.0 Ampere
to 3.0 Ampere

UNLESS OTHERWISE SPECIFIED
DIMENSIONS IN INCHES (MM)
TOLERANCES ARE:

NO PLACE DECIMALS ± 0.30
ONE PLACE DECIMALS ± 0.25
TWO PLACE DECIMALS ± 0.15
THREE PLACE DECIMALS ± 0.10

ANGLES
NO PLACE DECIMALS $\pm 5.0^\circ$
ONE PLACE DECIMALS $\pm 3.0^\circ$
TWO PLACE DECIMALS $\pm 2.0^\circ$
THREE PLACE DECIMALS $\pm 1.0^\circ$

LSMBC-1-DV SERIES

.100cl Low Profile - Vertical
Surface Mount Box Contact

29 JAN 07

Scale
NTS



4235 Earnings Way, New Albany, Indiana, 47150, USA
1-800-782-3486 (USA/Canada/Mexico)

Tel: 812-944-7244
Fax: 812-944-7268
E-mail: mle@mlelectronics.com
Web: www.mlelectronics.com

Revision
C

Sheet
2/2