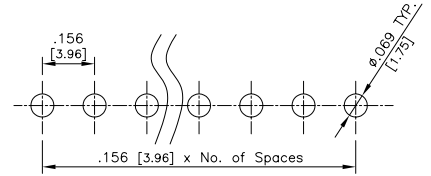
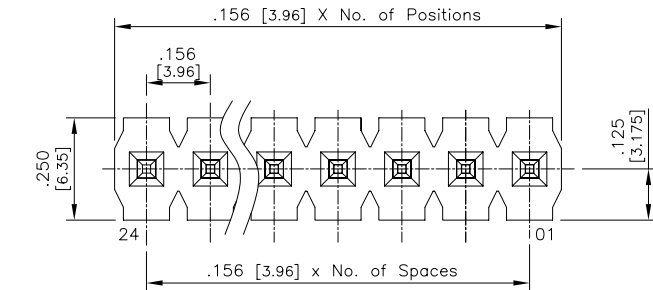
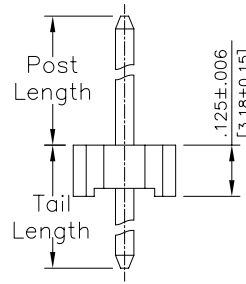
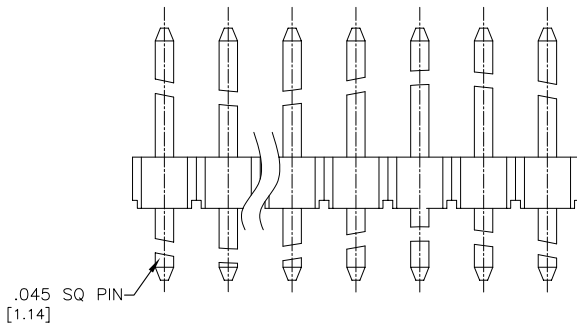


Major League Electronics .156 cl Terminal Strip Header - Straight



RECOMMENDED PC BOARD LAYOUT



Tails may be clipped to achieve desired pin length

Ordering Information

PC156H - S - - T - LF

Pins Per Row
01 - 24

Row Specification
S = Single Row

Lead Free

Plating Options	
<input type="checkbox"/>	Matte Tin All Over

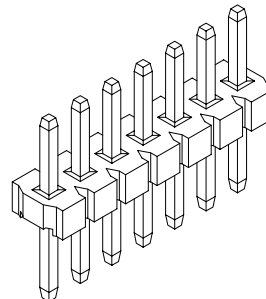
Pin Options				
Post Length		Tail Length		
.150	3.81mm	.475	12.07mm	01
.450	11.43mm	.175	4.45mm	02
.500	12.70mm	.175	4.45mm	04
.809	20.55mm	.156	3.96mm	14

Specifications

Current Rating: 7.9 Ampere
 Insulation Resistance: 5000MΩ Min.
 Dielectric Withstanding: 1500V AC/DC
 Contact Resistance: 20 mΩ Max.
 Operating Temperature: -55°C to + 105°C
 Max. Process Temperature:
 IR Reflow: 280°C up to 10 secs.
 Wave: 250°C up to 10 secs.
 Manual Solder: 380°C up to 5 secs.

Materials

Contact Material: Brass
 Insulator Material: LCP, UL94V-0
 Plating: 120μ" Matte Tin over 50μ" (1,27) Ni



Mates with:
 PC156S-XX-S-02
 PC156S-XX-S-04

Products cut to specific sizes are uncancellable/nonreturnable

Parts are subject to change without notice

UNLESS OTHERWISE SPECIFIED
 DIMENSIONS IN INCHES (MM)
 TOLERANCES ARE:

NO PLACE DECIMALS ±0.30
 ONE PLACE DECIMALS ±0.20
 TWO PLACE DECIMALS ±0.15
 THREE PLACE DECIMALS ±0.10

ANGLES
 NO PLACE DECIMALS ±4.0°
 ONE PLACE DECIMALS ±3.0°
 TWO PLACE DECIMALS ±2.0°
 THREE PLACE DECIMALS ±1.0°

PC156H SERIES

.156cl Single Row - Straight
 Thru Hole Terminal Strip Header

20 JUN 08

Scale
 NTS



4235 Earnings Way, New Albany, Indiana, 47150, USA
 1-800-782-3486 (USA/Canada/Mexico)

Tel: 812-944-7244

Fax: 812-944-7268

E-mail: mle@mlelectronics.com

Web: www.mlelectronics.com

Edition
 1

Sheet
 1/1