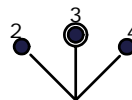


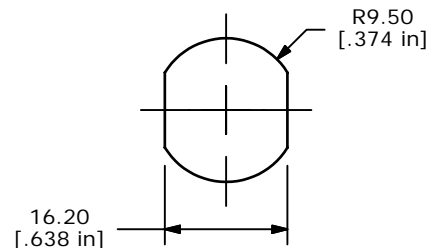
NOTES:

1. ALL DIMENSIONS IN MM[INCH]
2. GENERAL TOLERANCE: X.X = ±0.4
X.XX = ±0.25
3. TERM. NOS. FOR REFERENCE ONLY.
4. RATING: 4A @ 125VAC, 2A @ 250VAC
5. CONTACT RESISTANCE: 10 milli-OHMS MAX.
6. DIELECTRIC STRENGTH: 1,500 VAC-1Minute
7. MATERIALS:
HOUSING: NICKEL PLATED ZINC ALLOY
CYLINDER: NICKEL PLATED ZINC ALLOY
TERMINAL AND CONTACTS: GOLD PLATED COPPER ALLOY
KEYS (2): BRASS
8. 2002/95/EC (ROHS) COMPLIANT



CIRCUIT: SP (45°/45° INDEXING)
CONTACT CONFIGURATION

SWITCH FUNCTION		
CONNECTED TERMINAL #		
POS. 2	POS. 3	POS. 4
7-8	8-1	1-2



RECOMMENDED PANEL LAYOUT

LEGEND

- = Detent positions
- ⦿ = Key pull possible in these positions



TITLE KO130GA126

C	16303	REDRAWN INTO INVENTOR FORMAT	8/14/06	BO
REV	PCR NO	DESCRIPTION	DATE	BY

SCALE	DATE	DR	DWG	REV
1:1	8/14/2006	BO	K200260	C

THE INFORMATION CONTAINED IN THIS DOCUMENT IS PROPRIETARY TO E-SWITCH AND IS NOT TO BE COPIED OR TRANSFERRED