



# TAI-SAW TECHNOLOGY CO., LTD.

No. 3, Industrial 2nd Rd., Ping-Chen Industrial District,  
Taoyuan, 324, Taiwan, R.O.C.

TEL: 886-3-4690038 FAX: 886-3-4697532

E-mail: [tstsales@mail.taisaw.com](mailto:tstsales@mail.taisaw.com) Web: [www.taisaw.com](http://www.taisaw.com)

## Approval Sheet For Product Specification

Issued Date:

Product Name: SAW Filter 415.4MHz SMD 3.8x3.8 mm

TST Parts No.:TA0525A

Customer Parts No.:\_\_\_\_\_

Company: _____
Division: _____
Approved by : _____
Date: _____

Checked by: \_\_\_\_\_ Elvis Chiu

Approval by: \_\_\_\_\_ Francis Chen

Date: \_\_\_\_\_ 2005/12/26



# TAI-SAW TECHNOLOGY CO., LTD.

No. 3, Industrial 2nd Rd., Ping-Chen Industrial District,  
Taoyuan, 324, Taiwan, R.O.C.

TEL: 886-3-4690038 FAX: 886-3-4697532

E-mail: [tstsales@mail.taisaw.com](mailto:tstsales@mail.taisaw.com) Web: [www.taisaw.com](http://www.taisaw.com)

## SAW Filter 415.4 MHz

MODEL NO.: TA0525A

REV. NO.:1

### A. MAXIMUM RATING:

1. Input Power Level: 10 dB<sub>m</sub>
2. DC voltage: 3 V
3. Operating Temperature: +15°C to +35°C
4. Storage Temperature: -40°C to +85°C

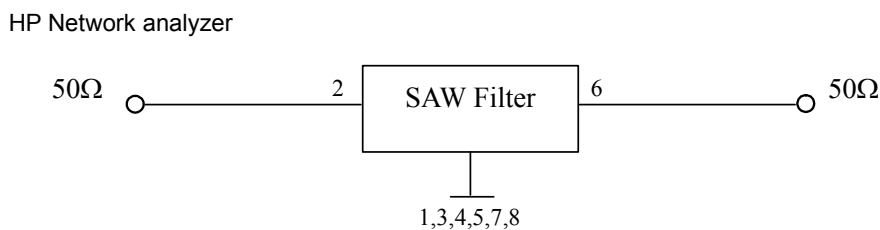
RoHS Compliant  
Lead free  
Lead-free soldering

### B. ELECTRICAL CHARACTERISTICS:

Item			Min.	Typical	Max.
Center frequency	F <sub>c</sub>	MH	-	415.4	-
Insertion loss	412.9 ~ 417.9 MHz	IL	dB	2.2	3.6
Amplitude ripple	412.9 ~ 417.9 MHz		dB	0.7	2.1
VSWR	412.9 ~ 417.9 MHz		dB	1.3	2.1
Attenuation (Reference level from 0 dB)					
1 ~ 379.0	MHz		dB	40	61
379.0 ~ 394.0	MHz		dB	31	50
394.0 ~ 405.5	MHz		dB	10	44
441.0 ~ 469.0	MHz		dB	37	55
469.0 ~ 550.0	MHz		dB	40	56
Temperature coefficient of frequency			ppm/k	-	-36
Source impedance	Z <sub>s</sub>		Ω	-	50
Load impedance	Z <sub>L</sub>		Ω	-	50

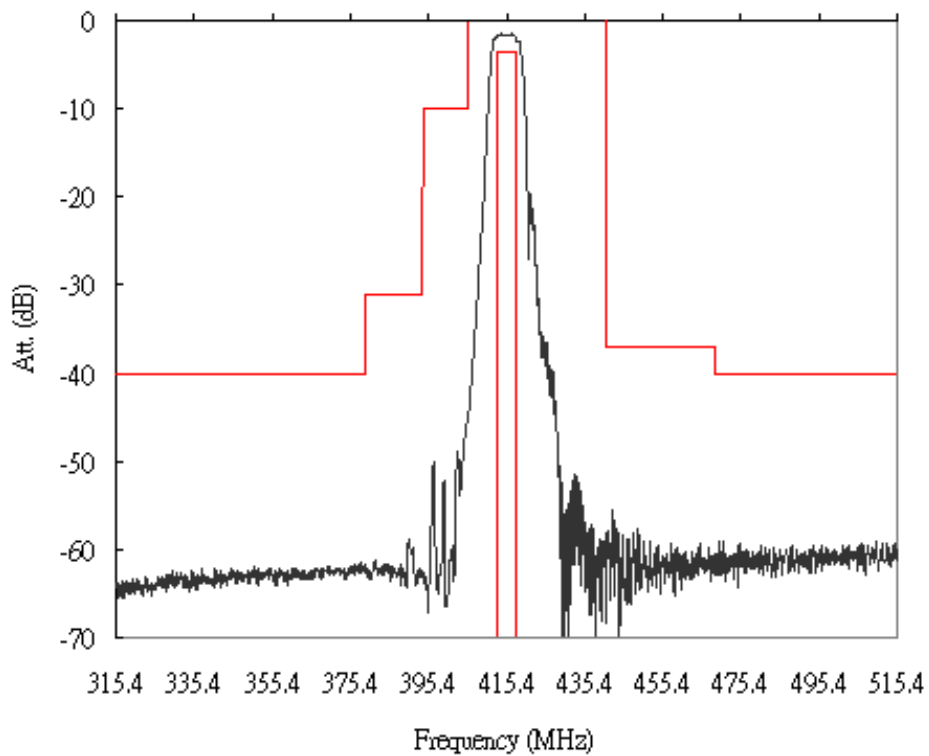
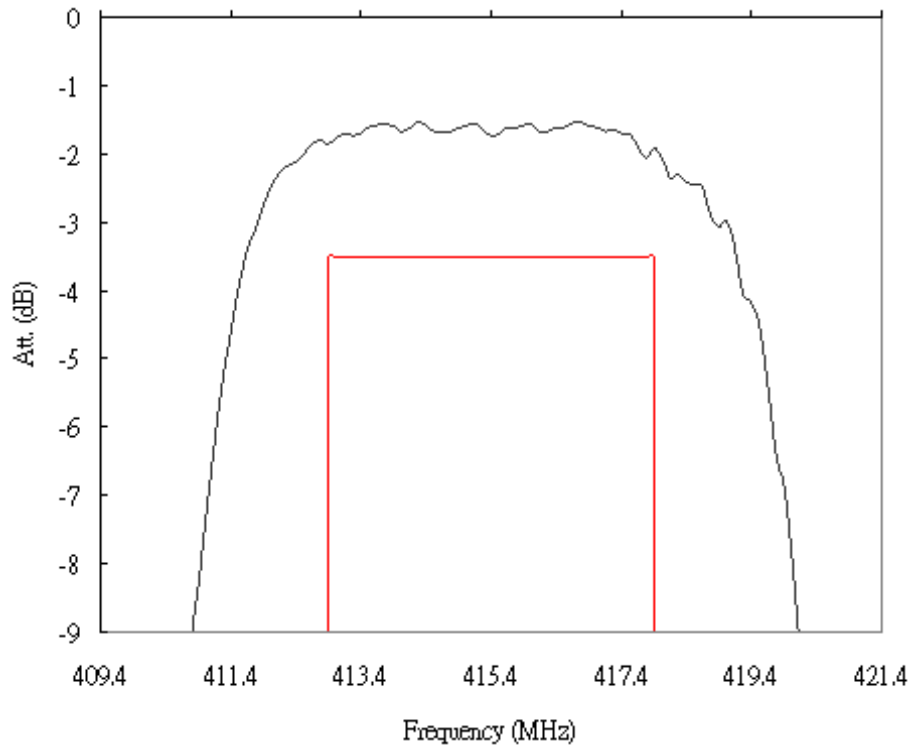
Note1. No matching network required for operation at 50Ω

### C. MEASUREMENT CIRCUIT:

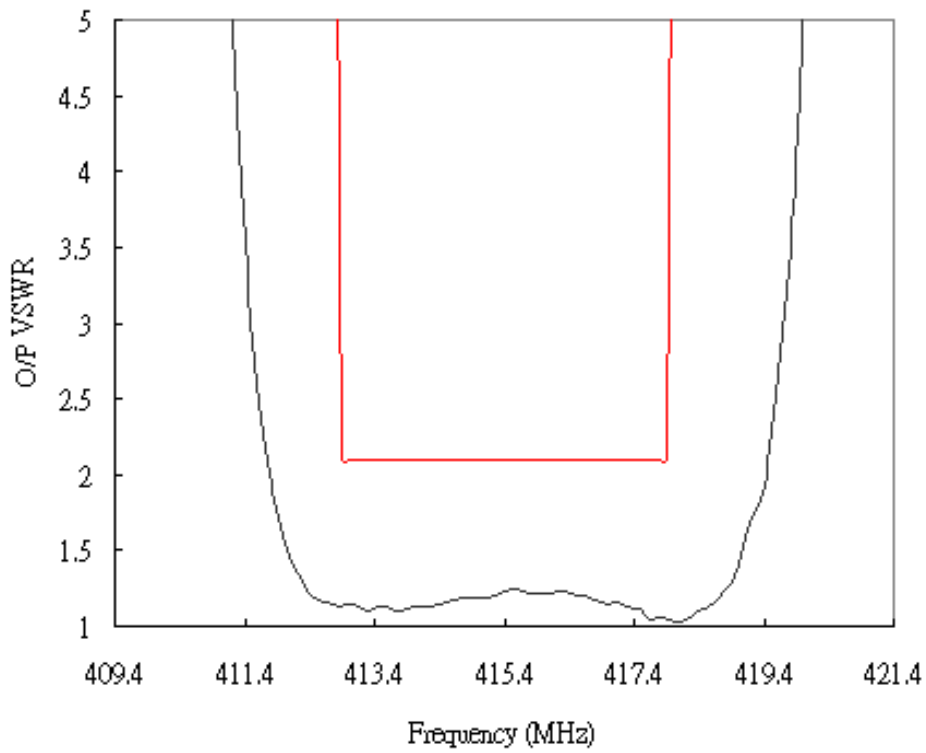
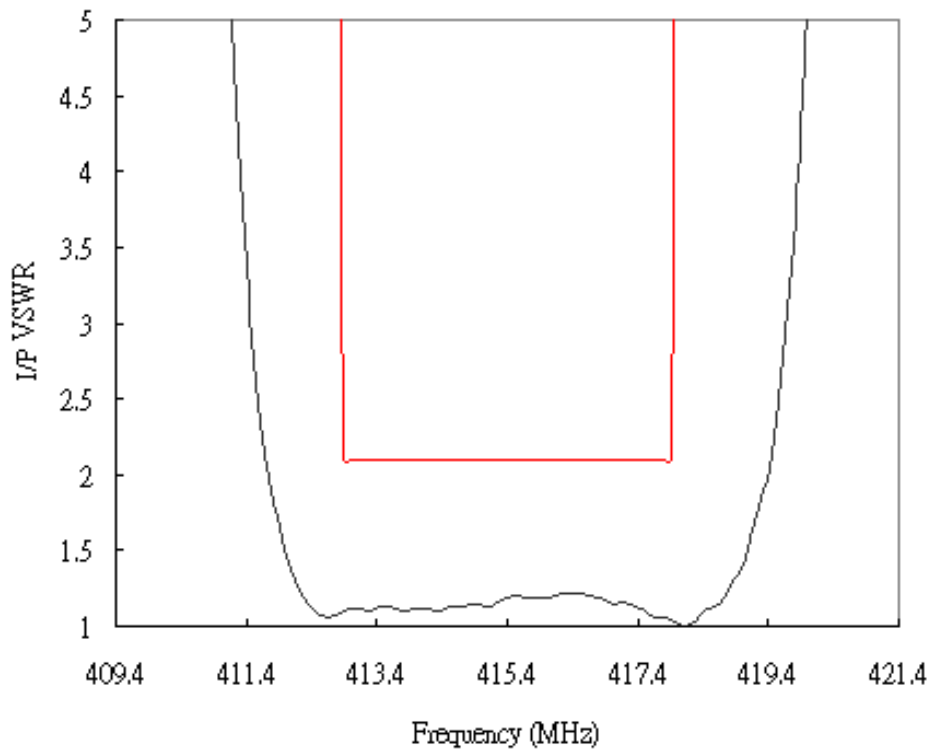


## D. FREQUENCY CHARACTERISTICS :

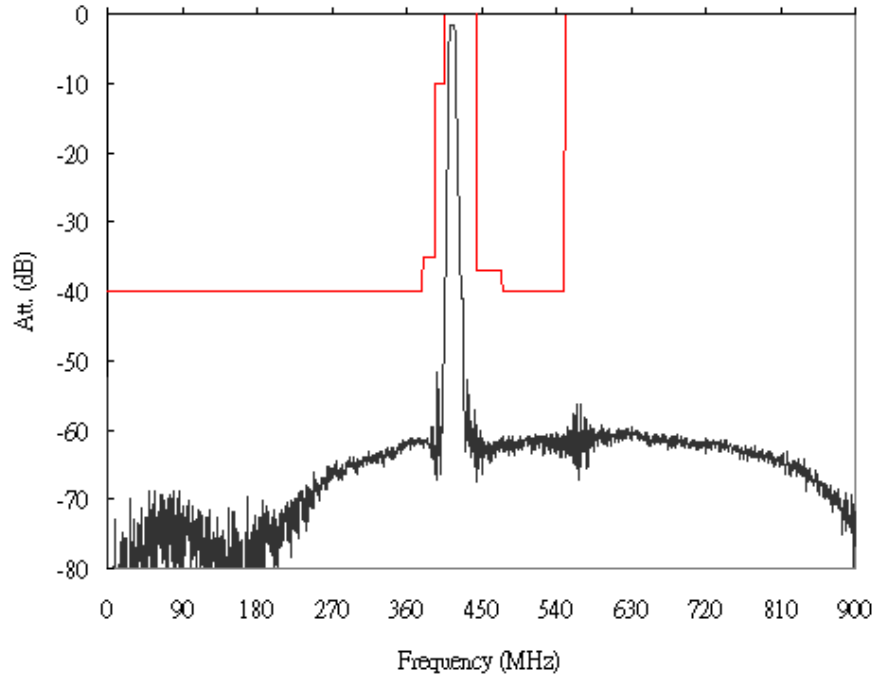
Transfer Function:



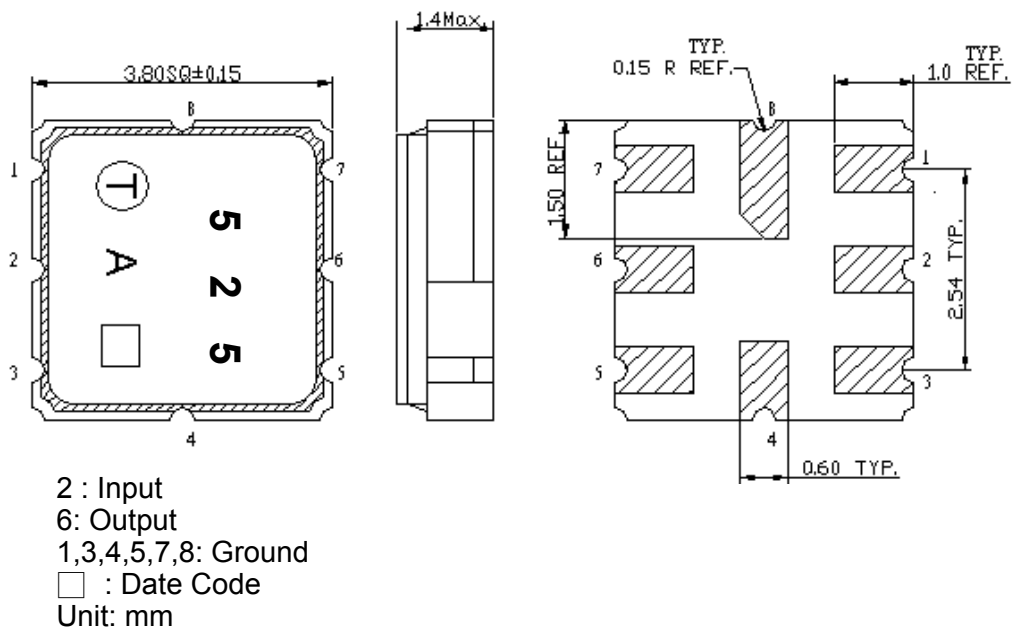
**Reflection Function:**



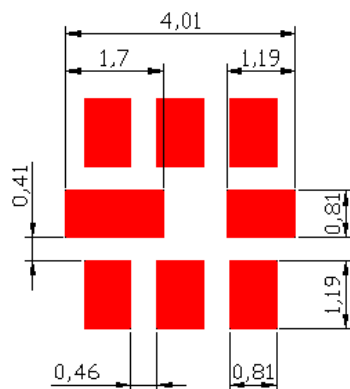
### Wideband



### E.OUTLINE DRAWING:

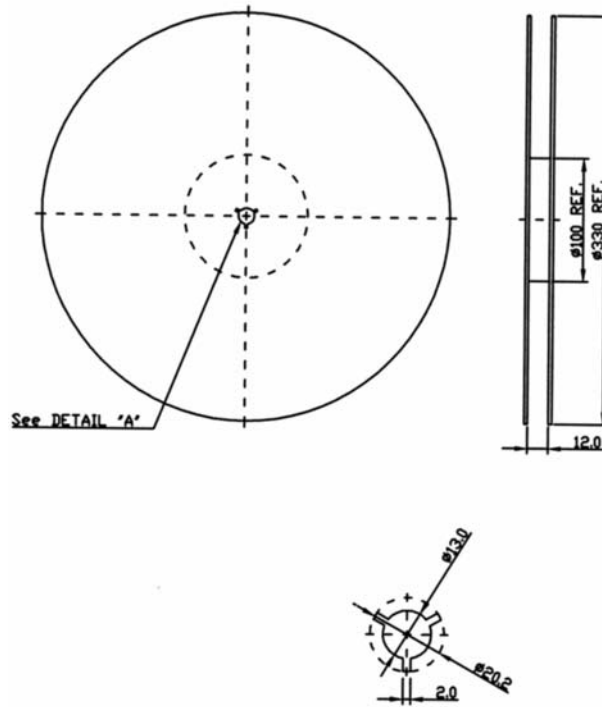


### F.PCB FOOTPRINT:



**G. PACKING:**

**1. REEL DIMENSION**



**2. TAPE DIMENSION**

