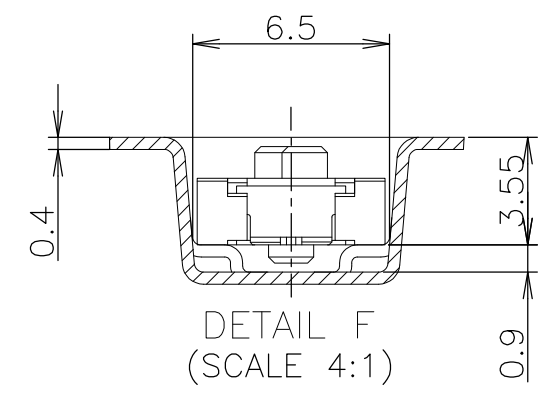
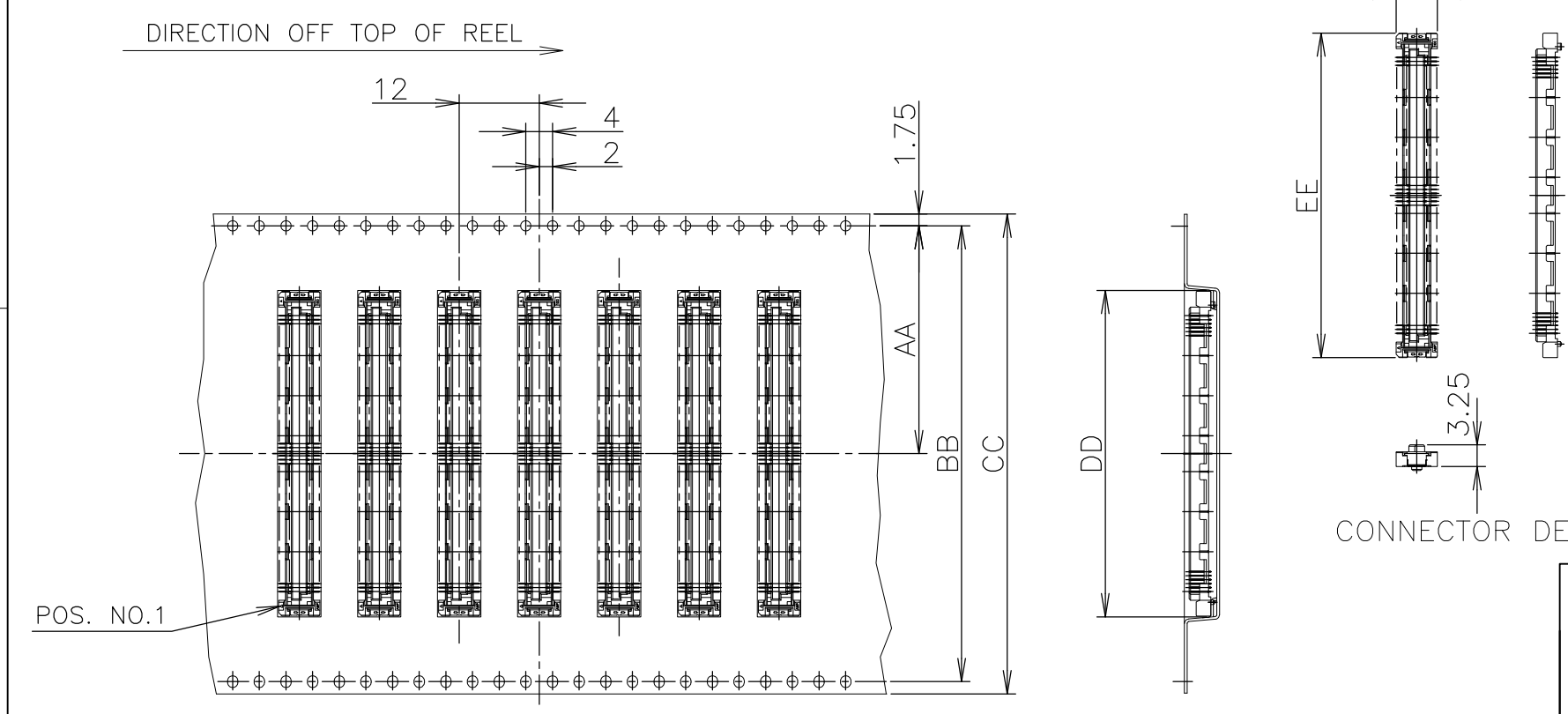
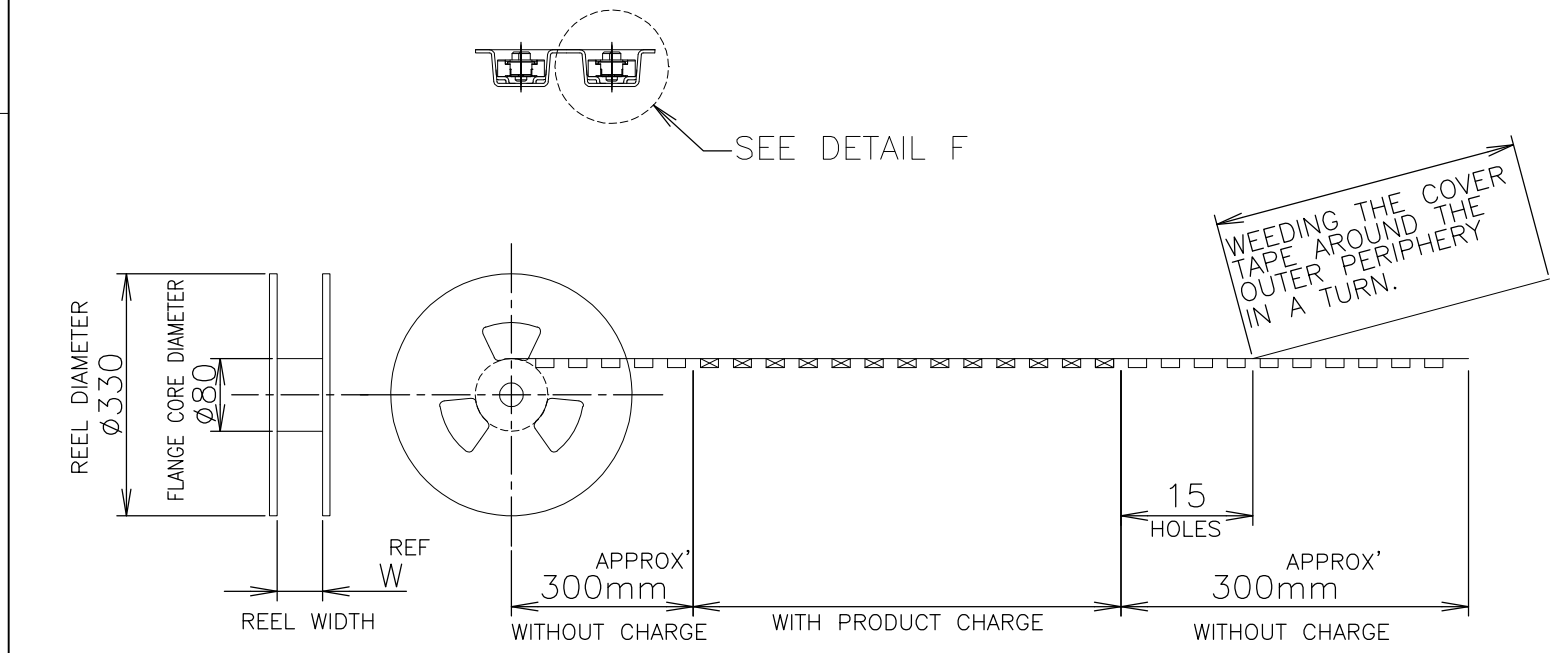


THIS DRAWING IS UNPUBLISHED. RELEASED FOR PUBLICATION JUN , 1996.  
 © COPYRIGHT 1996 By - ALL RIGHTS RESERVED.

| LOC | DIST | REVISIONS |     |                           |         |     |      |
|-----|------|-----------|-----|---------------------------|---------|-----|------|
| J   |      | P         | LTR | DESCRIPTION               | DATE    | DWN | APVD |
|     |      |           | C1  | REVISED PER ECO-11-005030 | 11MAR11 | RK  | HMR  |



CONNECTOR DETAIL



|               |               |      |      |      |      |    |      |      |      |             |             |
|---------------|---------------|------|------|------|------|----|------|------|------|-------------|-------------|
| SEALANT       | NOT AVAILABLE | 1000 | △    | 77.5 | 54.7 | 55 | 72   | 68.4 | 34.2 | 160         | 6-5353190-1 |
|               | AVAILABLE     |      |      | 77.5 | 48.7 | 49 | 72   | 68.4 | 34.2 | 140         | 6- -0       |
|               | NOT AVAILABLE |      |      | 61.5 | 42.7 | 43 | 56   | 52.4 | 26.2 | 120         | 5- -9       |
|               | AVAILABLE     |      |      | 61.5 | 36.7 | 37 | 56   | 52.4 | 26.2 | 100         | 5- -8       |
|               | NOT AVAILABLE |      |      | 61.5 | 33.7 | 34 | 56   | 52.4 | 26.2 | 90          | 5- -7       |
|               | AVAILABLE     |      |      | 49.5 | 30.7 | 31 | 44   | 40.4 | 20.2 | 80          | 5- -6       |
|               | AVAILABLE     |      |      | 49.5 | 27.7 | 28 | 44   | 40.4 | 20.2 | 70          | 5- -5       |
|               | NOT AVAILABLE |      |      | 49.5 | 24.7 | 25 | 44   | 40.4 | 20.2 | 60          | 5- -4       |
|               | NOT AVAILABLE |      |      | 37.5 | 21.7 | 22 | 32   | 28.4 | 14.2 | 50          | 5- -3       |
|               | AVAILABLE     |      |      | 37.5 | 18.7 | 19 | 32   | 28.4 | 14.2 | 40          | 5- -2       |
| NON SEALANT   | NOT AVAILABLE | 1000 | △    | 29.5 | 15.7 | 16 | 24   | 11.5 | 30   | 5-5353190-1 |             |
| NON SEALANT   | AVAILABLE     | 1000 | △    | 77.5 | 48.7 | 49 | 72   | 68.4 | 34.2 | 140         | 4-5353190-0 |
|               | AVAILABLE     |      | △    | 61.5 | 36.7 | 37 | 56   | 52.4 | 26.2 | 100         | 3- -8       |
|               | NOT AVAILABLE |      | △    | 77.5 | 54.7 | 55 | 72   | 68.4 | 34.2 | 160         | 1- -1       |
|               | AVAILABLE     |      |      | 77.5 | 48.7 | 49 | 72   | 68.4 | 34.2 | 140         | 1- -0       |
|               | NOT AVAILABLE |      |      | 61.5 | 42.7 | 43 | 56   | 52.4 | 26.2 | 120         | -9          |
|               | AVAILABLE     |      |      | 61.5 | 36.7 | 37 | 56   | 52.4 | 26.2 | 100         | -8          |
|               | NOT AVAILABLE |      |      | 61.5 | 33.7 | 34 | 56   | 52.4 | 26.2 | 90          | -7          |
|               | AVAILABLE     |      |      | 49.5 | 30.7 | 31 | 44   | 40.4 | 20.2 | 80          | -6          |
|               | AVAILABLE     |      |      | 49.5 | 27.7 | 28 | 44   | 40.4 | 20.2 | 70          | -5          |
|               | NOT AVAILABLE |      |      | 49.5 | 24.7 | 25 | 44   | 40.4 | 20.2 | 60          | -4          |
| NOT AVAILABLE |               |      | 37.5 | 21.7 | 22   | 32 | 28.4 | 14.2 | 50   | -3          |             |
| AVAILABLE     |               |      | 37.5 | 18.7 | 19   | 32 | 28.4 | 14.2 | 40   | -2          |             |
| SEALANT       | NOT AVAILABLE | 1000 | △    | 29.5 | 15.7 | 16 | 24   | 11.5 | 30   | 5353190-1   |             |

THIS DRAWING IS A CONTROLLED DOCUMENT.

DWN LEO ZHOU 16NOV04  
 CHK STEVEN YAO 16NOV04  
 APVD I.ENOMOTO 16NOV04

PRODUCT SPEC 108-60047  
 APPLICATION SPEC 114-5255

WEIGHT

MATERIAL ①

TOLERANCES UNLESS OTHERWISE SPECIFIED: 一般公差  
 0 PLC ± 0.2  
 1 PLC ± 0.2  
 2 PLC ± 0.2  
 3 PLC ± 0.2  
 4 PLC ANGLES ± 0.2  
 FINISH 仕上 ② ③ ⑥

STE TE Connectivity

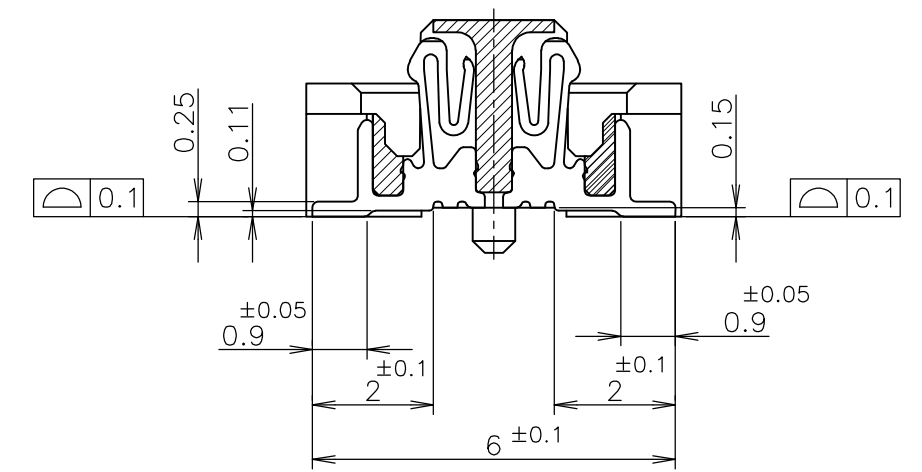
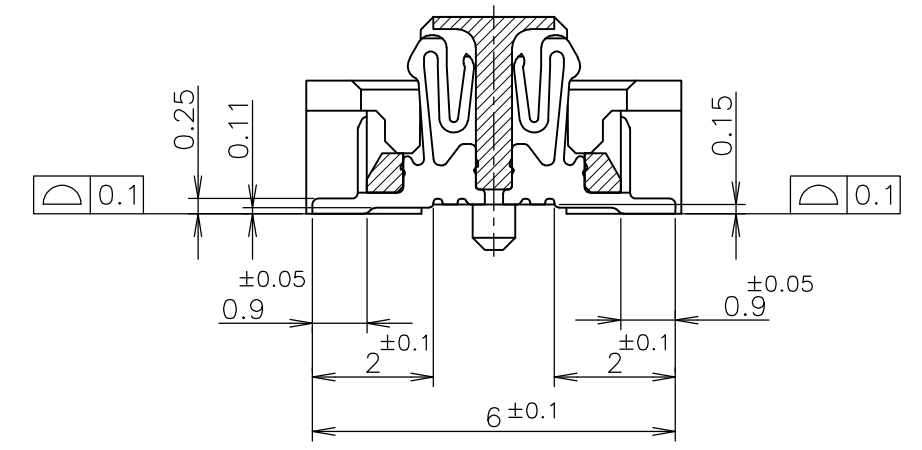
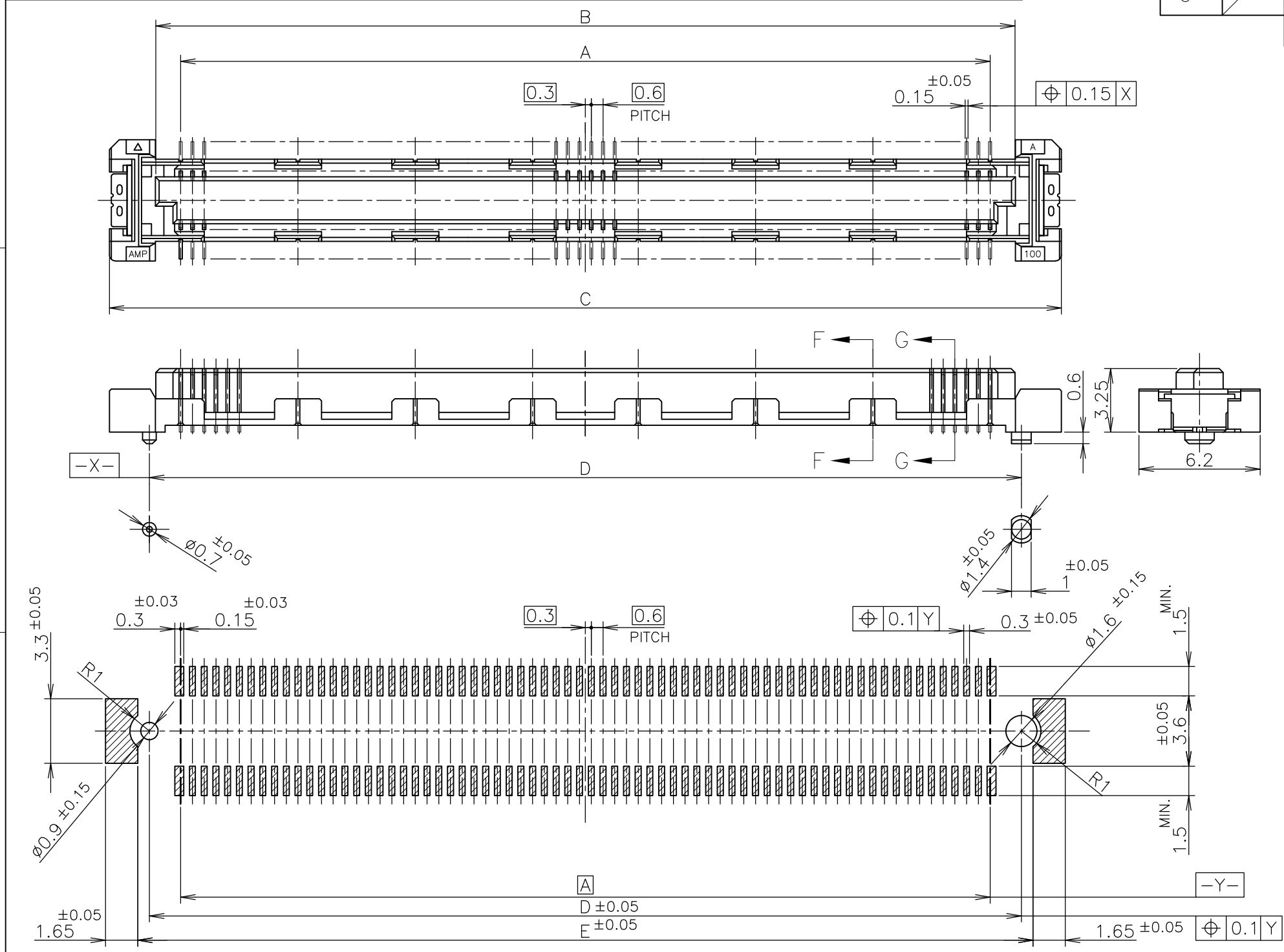
EMBOSS ASSY  
 FH 0.6BTB CONNECTOR  
 REC 4H WITH G-CONTACT

SIZE A3 CAGE CODE 00779 DRAWING NO G-5353190 RESTRICTED TO

CUSTOMER DRAWING SCALE 1:1 SHEET 1 OF 3 REV C1

THIS DRAWING IS UNPUBLISHED. RELEASED FOR PUBLICATION JUN , 1996.  
 © COPYRIGHT 1996 By - ALL RIGHTS RESERVED.

| LOC | DIST | REVISIONS   |      |      |
|-----|------|-------------|------|------|
| J   |      | 变更          | DATE | DWN  |
| P   | LTR  | DESCRIPTION |      | APVD |
|     |      | SEE SHEET 1 | -    | -    |



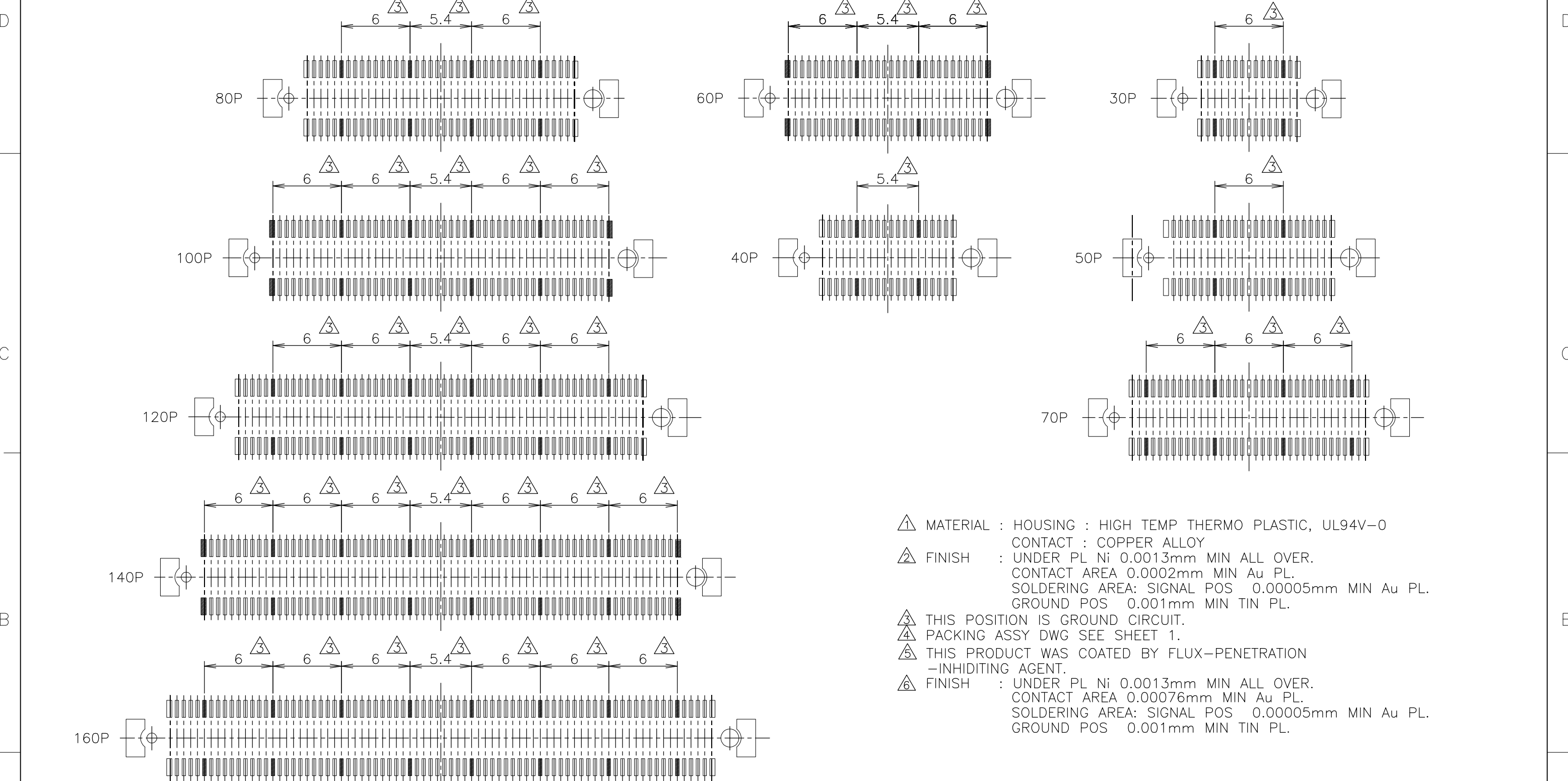
|      |      |      |    |      |     |                         |  |  |
|------|------|------|----|------|-----|-------------------------|--|--|
| 45.8 | 44.6 | 48.7 | 44 | 41.4 | 140 | 4-5353190-0             |  |  |
| 33.8 | 32.6 | 36.7 | 32 | 29.4 | 100 | 3-8                     |  |  |
| 51.8 | 50.6 | 54.7 | 50 | 47.4 | 160 | 1-1 & 6-5353190-1       |  |  |
| 45.8 | 44.6 | 48.7 | 44 | 41.4 | 140 | 1-0 & 6-0               |  |  |
| 39.8 | 38.6 | 42.7 | 38 | 35.4 | 120 | -9 & 5-9                |  |  |
| 33.8 | 32.6 | 36.7 | 32 | 29.4 | 100 | -8 & 5-8                |  |  |
| 30.8 | 29.6 | 33.7 | 29 | 26.4 | 90  | -7 & 5-7                |  |  |
| 27.8 | 26.6 | 30.7 | 26 | 23.4 | 80  | -6 & 5-6                |  |  |
| 24.8 | 23.6 | 27.7 | 23 | 20.4 | 70  | -5 & 5-5                |  |  |
| 21.8 | 20.6 | 24.7 | 20 | 17.4 | 60  | -4 & 5-4                |  |  |
| 18.8 | 17.6 | 21.7 | 17 | 14.4 | 50  | -3 & 5-3                |  |  |
| 15.8 | 14.6 | 18.7 | 14 | 11.4 | 40  | -2 & 5-2                |  |  |
| 12.8 | 11.6 | 15.7 | 11 | 8.4  | 30  | 5353190-1 & 5-5353190-1 |  |  |
| E    | D    | C    | B  | A    | POS | PART NO.                |  |  |

REFERENCE P.C.BOARD LAYOUT

|                                             |  |                  |                                                                                |                 |                       |                         |
|---------------------------------------------|--|------------------|--------------------------------------------------------------------------------|-----------------|-----------------------|-------------------------|
| THIS DRAWING IS A CONTROLLED DOCUMENT.      |  | DWN              | TE Connectivity<br>EMBOSS ASSY<br>FH 0.6BTB CONNECTOR<br>REC 4H WITH G-CONTACT |                 |                       |                         |
| DIMENSIONS: 单位: 耗 mm                        |  | CHK              |                                                                                |                 |                       | NAME 名称                 |
| TOLERANCES UNLESS OTHERWISE SPECIFIED: 一般公差 |  | APVD             |                                                                                |                 |                       | PRODUCT SPEC 製品規格       |
| MATERIAL 材料                                 |  | WEIGHT           |                                                                                |                 |                       | APPLICATION SPEC 取付適用規格 |
| FINISH 仕上                                   |  | CUSTOMER DRAWING | SIZE A3                                                                        | CAGE CODE 00779 | DRAWING NO. G-5353190 | RESTRICTED TO           |
|                                             |  |                  | SCALE 尺度 4:1                                                                   | SHEET 2 OF 3    | REV C1                |                         |

THIS DRAWING IS UNPUBLISHED. RELEASED FOR PUBLICATION JUN , 1996.  
 © COPYRIGHT 1996 By - ALL RIGHTS RESERVED.

| LOC | DIST | REVISIONS<br>変更 |     |             | DATE | DWN | APVD |
|-----|------|-----------------|-----|-------------|------|-----|------|
| J   |      | P               | LTR | DESCRIPTION |      |     |      |
|     |      | -               |     | SEE SHEET 1 | -    | -   | -    |



- ① MATERIAL : HOUSING : HIGH TEMP THERMO PLASTIC, UL94V-0  
CONTACT : COPPER ALLOY
- ② FINISH : UNDER PL Ni 0.0013mm MIN ALL OVER.  
CONTACT AREA 0.0002mm MIN Au PL.  
SOLDERING AREA: SIGNAL POS 0.00005mm MIN Au PL.  
GROUND POS 0.001mm MIN TIN PL.
- ③ THIS POSITION IS GROUND CIRCUIT.
- ④ PACKING ASSY DWG SEE SHEET 1.
- ⑤ THIS PRODUCT WAS COATED BY FLUX-PENETRATION  
-INHIDTING AGENT.
- ⑥ FINISH : UNDER PL Ni 0.0013mm MIN ALL OVER.  
CONTACT AREA 0.00076mm MIN Au PL.  
SOLDERING AREA: SIGNAL POS 0.00005mm MIN Au PL.  
GROUND POS 0.001mm MIN TIN PL.

|                                                   |  |                            |  |                            |           |
|---------------------------------------------------|--|----------------------------|--|----------------------------|-----------|
| THIS DRAWING IS A CONTROLLED DOCUMENT.            |  | DWN                        |  | <b>STE</b> TE Connectivity |           |
| DIMENSIONS:<br>単位: 耗<br>mm                        |  | CHK                        |  |                            |           |
| TOLERANCES UNLESS<br>OTHERWISE SPECIFIED:<br>一般公差 |  | APVD                       |  | NAME<br>名称                 |           |
| 0 PLC ± 0.3                                       |  | PRODUCT SPEC<br>製品規格       |  | EMBOSS ASSY                |           |
| 1 PLC ± 0.3                                       |  | APPLICATION SPEC<br>取付適用規格 |  | FH 0.6BTB CONNECTOR        |           |
| 2 PLC ± 0.3                                       |  | WEIGHT                     |  | REC 4H WITH G-CONTACT      |           |
| 3 PLC ± 0.3                                       |  | CUSTOMER DRAWING           |  | SIZE                       | CAGE CODE |
| 4 PLC ± 0.3                                       |  |                            |  | A3                         | 00779     |
| ANGLES ± 3'                                       |  |                            |  | DRAWING NO<br>番号           |           |
| FINISH<br>仕上                                      |  |                            |  | G-5353190                  |           |
| MATERIAL<br>材料                                    |  |                            |  | RESTRICTED TO<br>番号        |           |
|                                                   |  |                            |  | SCALE<br>尺度                | SHEET     |
|                                                   |  |                            |  | 3:1                        | 3 OF 3    |
|                                                   |  |                            |  | REV                        | C1        |