

7x7.2 Square/Single Turn/Trimming Potentiometer

-- 3362S --



Electrical Characteristics
 Standard Resistance Range.....50Ω ~ 2MΩ
 Resistance Tolerance.....±10%
 Absolute Minimum Resistance.....≤1%R或10Ω
 Contact Resistance Variation.....CRV≤3%或5Ω
 Insulation Resistance.....R1≥1GΩ
 Withstand Voltage.....700Vac
 Effective Travel.....250°C

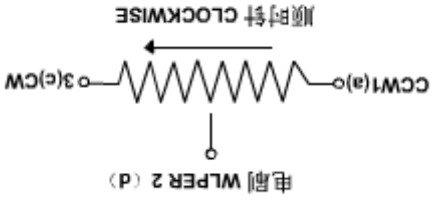
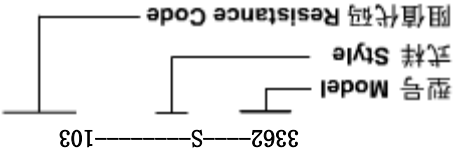
Environmental Characteristics

Power Rating, 300 volts max
 0.5W@70°C, 0W@125°C
 Temperature Range.....-55°C ~ 125°C
 Temperature Coefficient.....±250ppm/°C
 Temperature Variation.....-55°C, 30min, +125°C
 30min

Physical Characteristics

Starting Torque.....≤
 Rotational Life.....200cycles
 Electrical Endurance at 70°C.....0.5W@70°C
 Collision.....390m/s², 400cycles ΔR≤5%R
 Vibration.....10 ~ 500Hz, 0.75mm, 6h
 ΔR≤5%R, Δ(Uab/Uac)≤±7.5%R
 ΔR≤5%R, Δ(Uab/Uac)≤5%
 ΔR≤10%R, R1≥100MΩ
 ΔR≤10%R, CRV≤3% or 5Ω

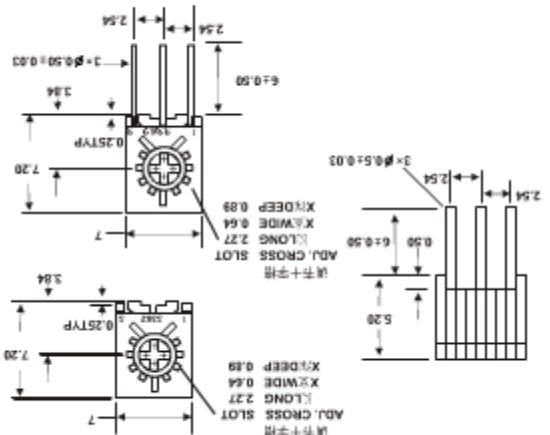
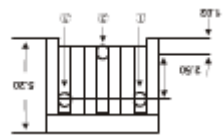
How To Order



图中公式：除注明外均为±0.25
 Tolerance is ± 0.25 if no identification

Standard Resistance Table

Resistance Code	Resistance (ohms)	Special resistances available
100	10	
200	20	
500	50	
101	100	
201	200	
501	500	
102	1,000	
202	2,000	
502	5,000	
103	10,000	
203	20,000	
253	25,000	
503	50,000	
104	100,000	
204	200,000	
254	250,000	
504	500,000	
105	1,000,000	
205	2,000,000	



..... Install dimension.....

..... Mutual dimension.....