

RoHS Compliant Product  
A suffix of "-C" specifies halogen & lead-free

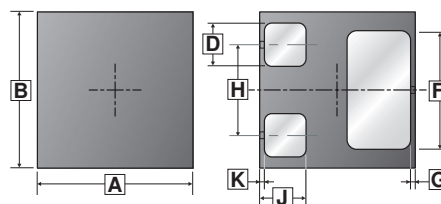
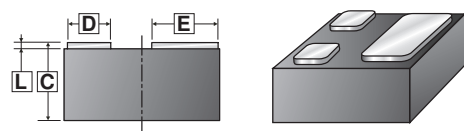
## DESCRIPTION

- Epitaxial planar Silicon diode

**WBFBP-03D**

## FEATURES

- Fast Switching Speed
- Ultra-Small Surface Mount Package
- For General Purpose Switching Applications
- High Conductance



## APPLICATIONS

- For General Purpose Switching Applications , rectifiers
- For portable equipment:(i.e. Mobile phone,MP3, MD,CD-ROM, DVD-ROM, Note book PC, etc.)

## MARKING

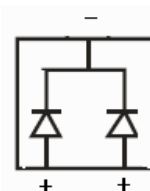
JJ

REF.	Millimeter		REF.	Millimeter	
	Min.	Max.		Min.	Max.
A	0.950	1.050	G	-	0.050
B	0.950	1.050	H	0.510	0.610
C	0.010	0.070	J	0.250	0.350
D	0.210	0.310	K	-	0.050
E	0.350 REF.		L	0.450	0.550
F	0.680 REF.				

## PACKAGE INFORMATION

Package	MPQ	Leader Size
WBFBP-03D	5K	7 inch

TOP VIEW



## ABSOLUTE MAXIMUM RATINGS (T<sub>A</sub>=25°C unless otherwise specified)

Parameters	Symbol	Rating	Unit
DC Blocking Voltage	V <sub>R</sub>	85	V
Average Rectified Output Current	I <sub>o</sub>	75	mA
Power Dissipation	P <sub>D</sub>	100	mW
Operating Junction and Storage Temperature	T <sub>J</sub> ,T <sub>STG</sub>	150, -65~150	°C

**ELECTRICAL CHARACTERISTICS** ( $T_A=25^\circ\text{C}$  unless otherwise specified)

Parameters	Symbol	Min.	Max.	Unit	Test Conditions
Reverse breakdown voltage	$V_{(BR)}$	85	-	V	$I_R=100\mu\text{A}$
Maximum DC Reverse Current at rated DC blocking voltage	$I_{R1}$	-	2	$\mu\text{A}$	$V_R=75\text{V}$
	$I_{R2}$	-	0.03	$\mu\text{A}$	$V_R=25\text{V}$
Forward Voltage	$V_{F1}$	-	0.715	V	$I_F=1\text{mA}$
	$V_{F2}$	-	0.855	V	$I_F=10\text{mA}$
	$V_{F3}$	-	1	V	$I_F=50\text{mA}$
	$V_{F4}$	-	1.25	V	$I_F=150\text{mA}$
Diode Capacitance	$C_D$	-	1.5	pF	$V_R=0, f=1\text{MHz}$
Maximum Reverse Recovery Time	$T_{RR}$	-	4	nS	$I_F=I_R=10\text{mA}$

**CHARACTERISTIC CURVES**

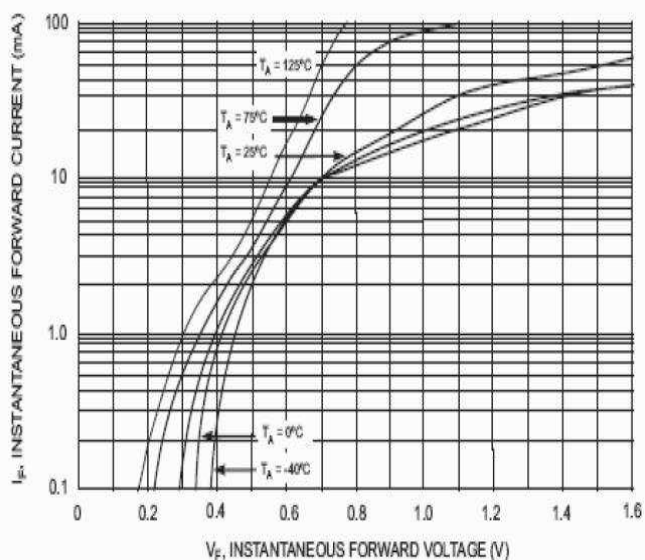


Fig. 1 Typical Forward Characteristics

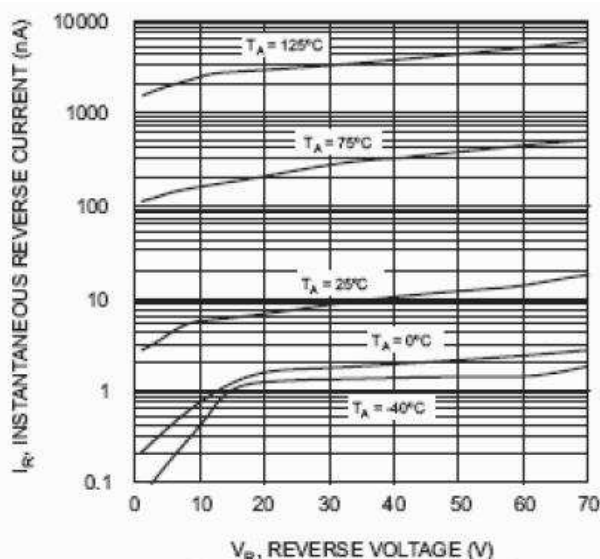


Fig. 2 Typical Reverse Characteristics

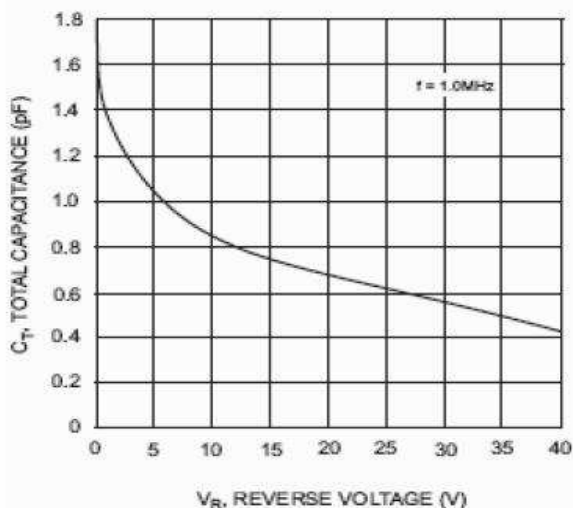


Fig. 3 Typical Capacitance

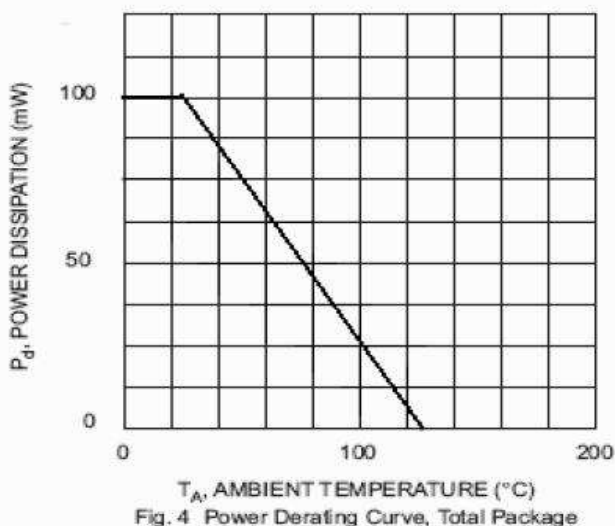


Fig. 4 Power Derating Curve, Total Package