

REVISIONS			
REV.	DESCRIPTION	DATE	APPROVED
A	Created Drawing	03/04/2013	DC

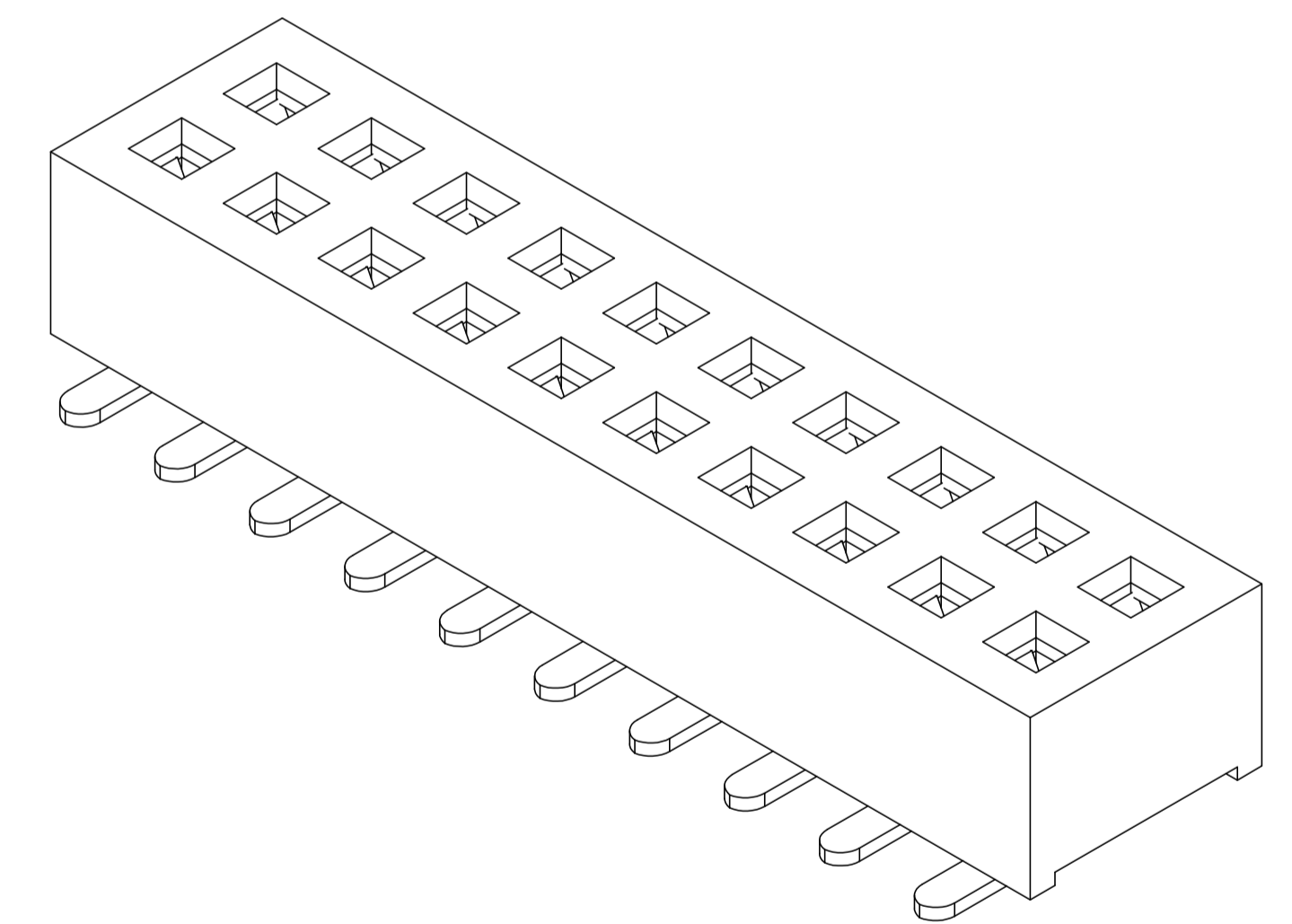
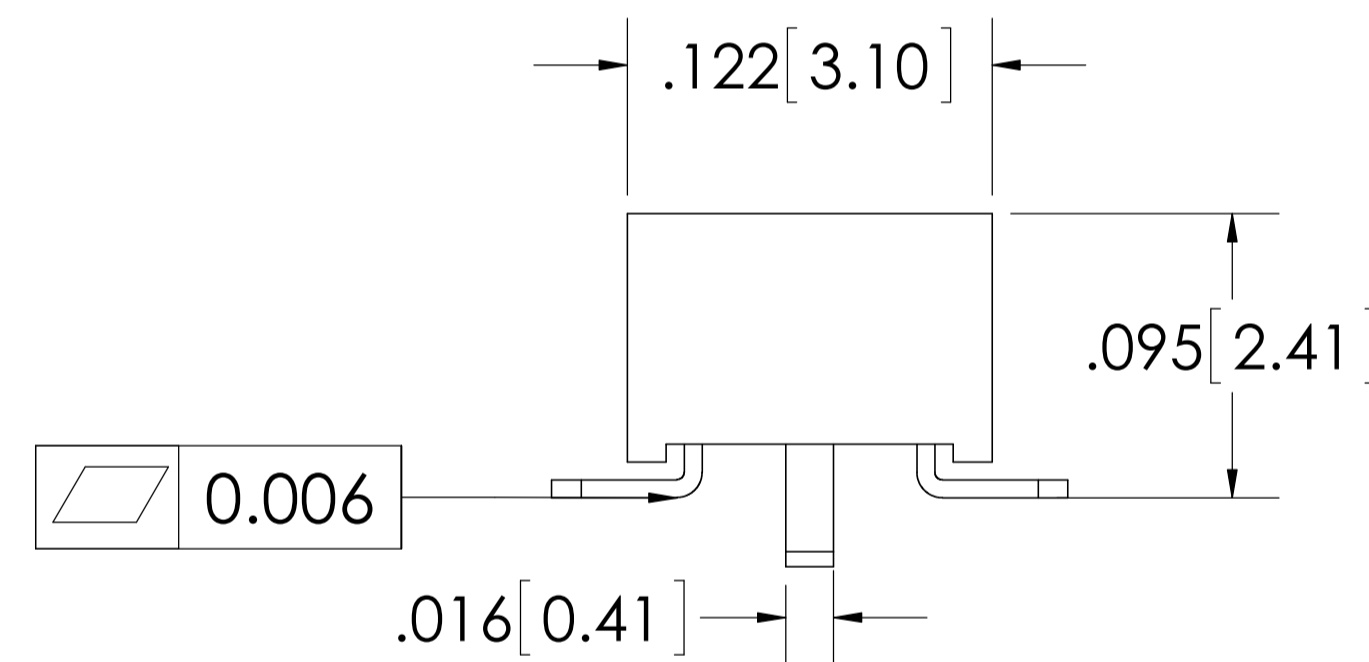
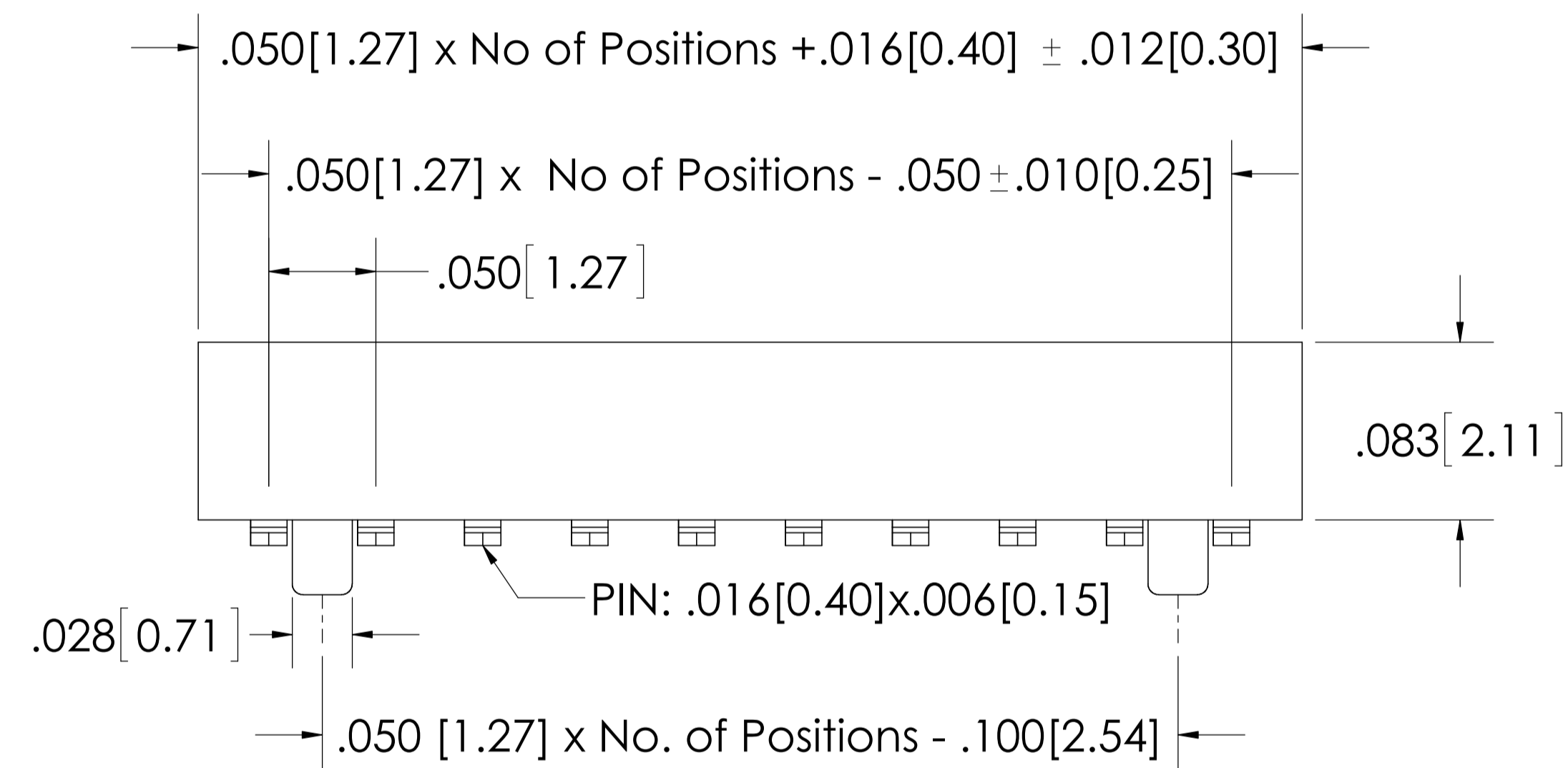
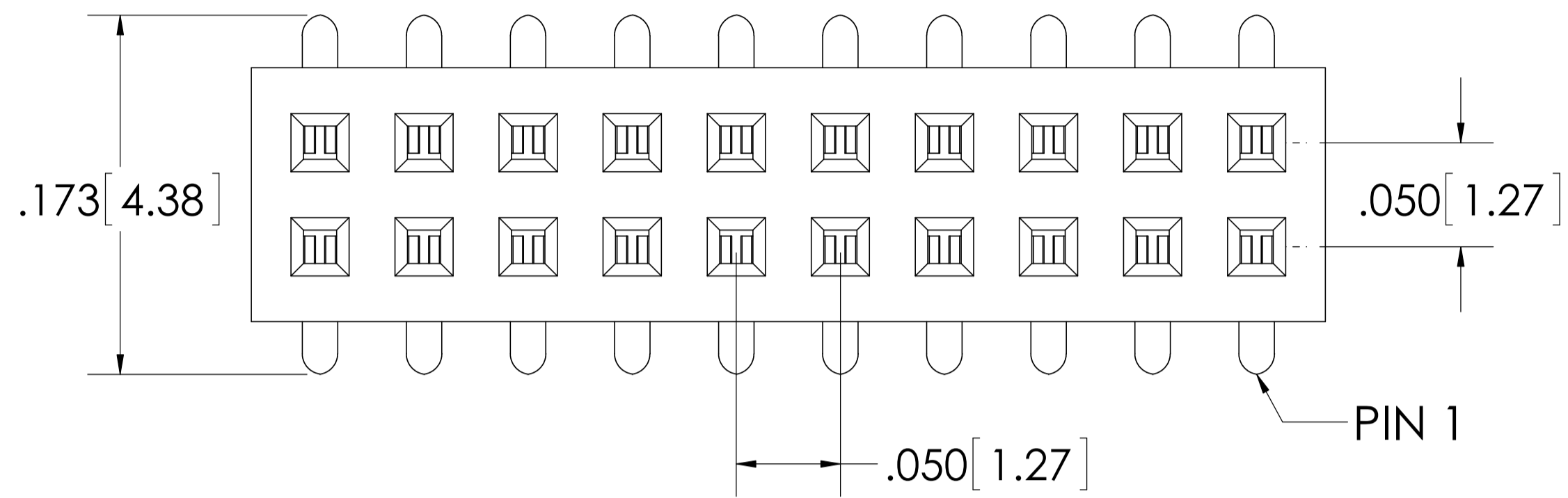
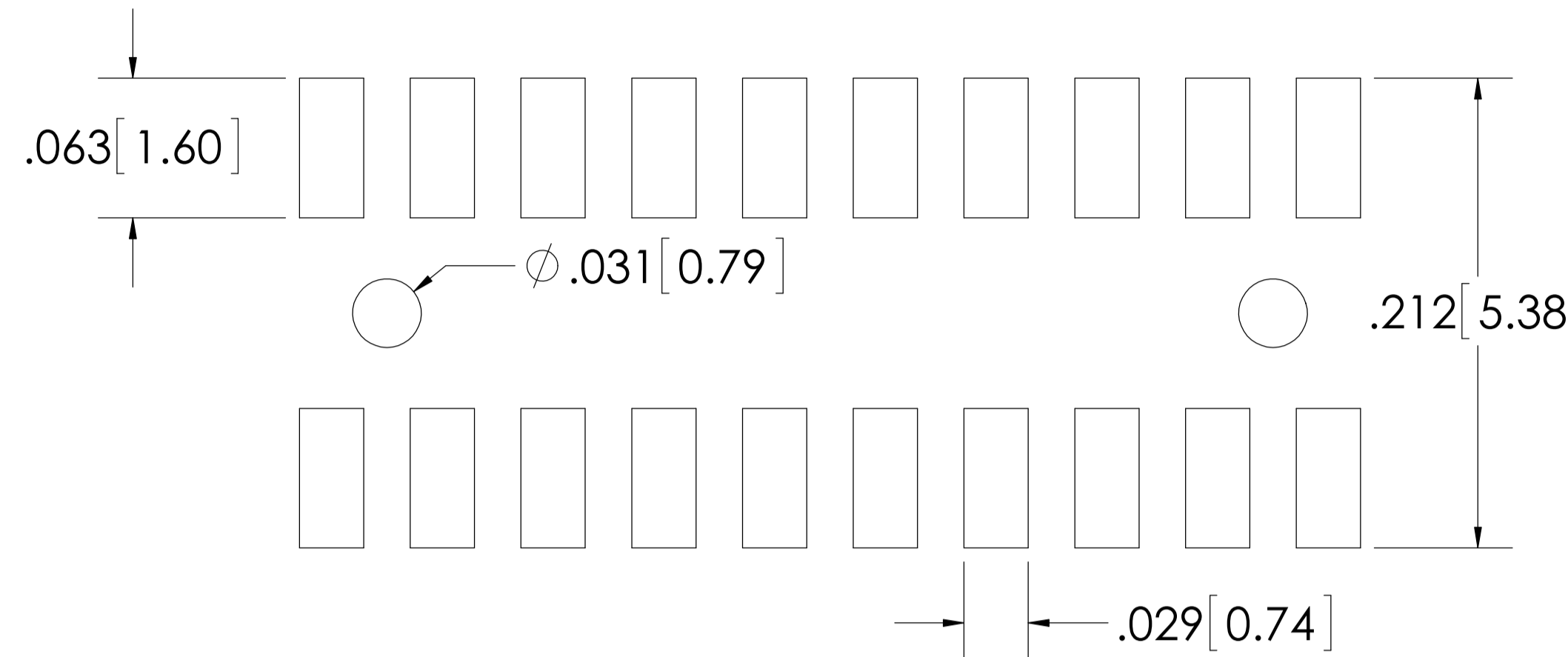
Specifications:
 Current Rating: 1.0 Ampere
 Insulation Resistance: 1000M Ohms Min.
 Dielectric Withstanding: 500V AC
 Contact Resistance: 20m Ohms Max.
 Operating Temperature: -40°C to +105°C

Materials:
 Contact Material: Phosphor Bronze
 Contact Plating: Au over Ni
 Insulator Material: Nylon 6T

Max. Process Temperatures:
 Peak: 260°C up to 20 secs.
 Process: 230°C up to 60 secs.
 Wave: 260°C up to 6 Secs.
 Manual Solder: 350°C up to 5 secs.

All materials must meet Major League Electronics requirements for environmental protection.

RECOMMENDED P.C.B. LAYOUT



LSSHS-5 **XX** - **D** - **04** - **X** - **XXX** - **XX** - **X** - **LF**

Pins Per Row 01-40

Row Specification

D=Dual Row

Surface Mount

04= Bottom Entry

Plating

F	Gold Flash Over Entire Pin
G	10u Gold on Contact Area/Flash on Remainder

RoHS Compliant

P=Pick and Place Cap

Packaging:

TR=Tape and Reel

TB=Tube

Position for Polarization

Leave Blank if not needed

UNLESS OTHERWISE SPECIFIED:

DIMENSIONS ARE IN INCHES
 TOLERANCES:
 ONE PLACE DECIMALS ±.100
 TWO PLACE DECIMAL ±.010
 THREE PLACE DECIMAL ±.005
 FOUR PLACE DECIMAL ±.002

INTERPRET GEOMETRIC TOLERANCING PER:

MATERIAL --

FINISH --

DATE

03/04/13

03/04/13

ENG APPR.

MFG APPR.

Q.A.

COMMENTS:

RoHS COMPLIANT 2002/95/EC

RoHS COMPLIANT 2002/95/EC

NAME

GWE

DRC



4235 Earnings Way
 New Albany, IN 47150
 Phone: 812-944-7244 Fax: 812-944-7268
 e-Mail: mle@mllelectronics.com

TITLE: LSSHS-5-D-04

SIZE DWG. NO.

B Q:ASSEM/050/LSSHS-5-D-04

REV

A

SCALE: 8:1

WEIGHT:

SHEET 1 OF 1

PROPRIETARY AND CONFIDENTIAL
 THE INFORMATION CONTAINED IN THIS DRAWING IS THE SOLE PROPERTY OF MAJOR LEAGUE ELECTRONICS. ANY REPRODUCTION IN PART OR AS A WHOLE WITHOUT THE WRITTEN PERMISSION OF MAJOR LEAGUE ELECTRONICS IS PROHIBITED.