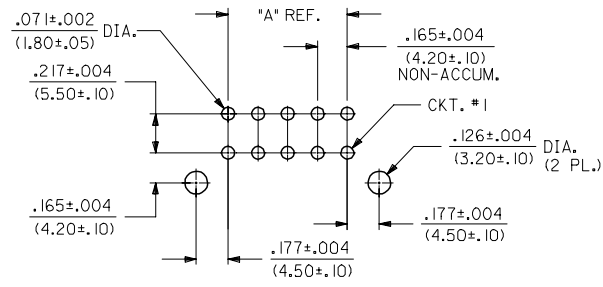
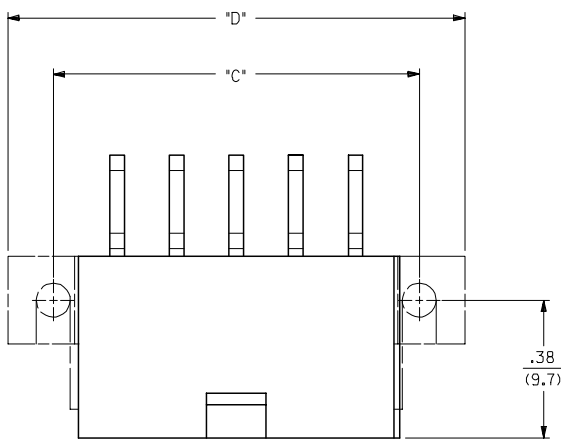


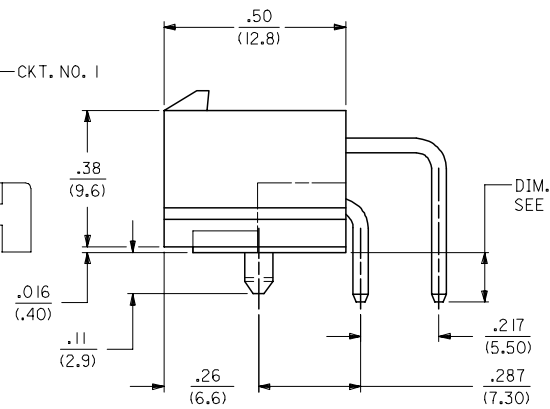
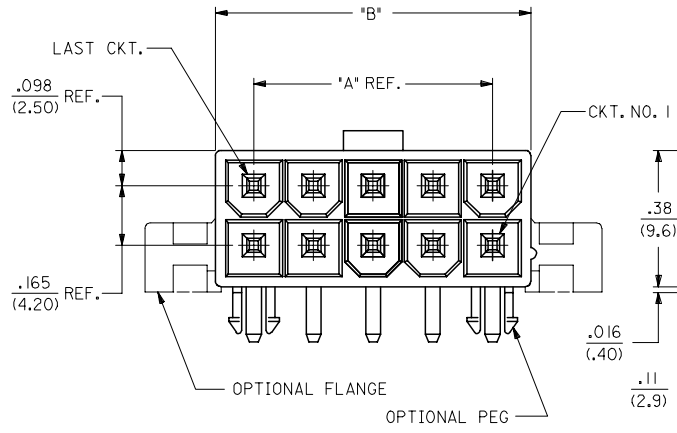
13 12 11 10 9 8 7 6 5 4 3 2 1

J
I
H
G
F
E
D
C
B
A



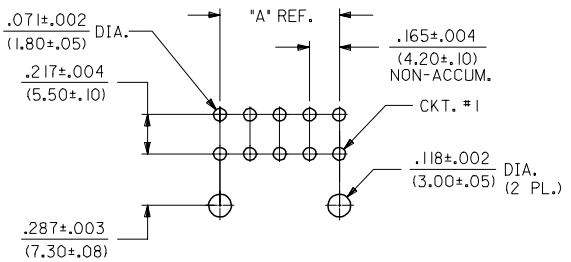
RECOMMENDED HOLE LAYOUT FOR .070/(1.78) MAX. THICK P.C. BOARD. (FLANGE MOUNT)

CIRCUIT SIZE	DIM. "A"	DIM. "B"	DIM. "C"	DIM. "D"
2	N.A.	.213 (5.40)	.354 (9.00)	.606 (15.40)
4	.165 (4.20)	.378 (9.60)	.520 (13.20)	.772 (19.60)
6	.331 (8.40)	.543 (13.80)	.685 (17.40)	.937 (23.80)
8	.496 (12.60)	.709 (18.00)	.850 (21.60)	1.102 (28.00)
10	.661 (16.80)	.874 (22.20)	1.016 (25.80)	1.268 (32.20)
12	.827 (21.00)	1.039 (26.40)	1.181 (30.00)	1.433 (36.40)
14	.992 (25.20)	1.205 (30.60)	1.346 (34.20)	1.598 (40.60)
16	1.157 (29.40)	1.370 (34.80)	1.512 (38.40)	1.764 (44.80)
18	1.323 (33.60)	1.535 (39.00)	1.677 (42.60)	1.929 (49.00)
20	1.488 (37.80)	1.701 (43.20)	1.843 (46.80)	2.094 (53.20)
22	1.654 (42.00)	1.866 (47.40)	2.008 (51.00)	2.260 (57.40)
24	1.819 (46.20)	2.031 (51.60)	2.173 (55.20)	2.425 (61.60)



NOTES:

- HOUSING MATERIAL:
 "A" - NYLON 6/6, U.L. 94V-2, COLOR: NATURAL.
 "B" - NYLON 6/6, U.L. 94V-0, COLOR: NATURAL.
- TERMINAL MATERIAL: BRASS, ALLOY 260.
- PART MATES WITH MINI-FIT JR. RECEPTACLE #5557.
- THIS PART CONFORMS TO CLASS B REQUIREMENT OF COSMETIC SPECIFICATION PS-45499-002.
- TERMINAL PLATING:
 "A" - .000200/(.00508) MIN. TIN OVER .000100/(.00254) MIN. COPPER OVERALL.
 "B" - .000030/(.00076) MIN. GOLD OVER .000050/(.00127) MIN. NICKEL OVERALL.
 "C" - .000100/(.00254) MIN. BRIGHT TIN OVER .000050/(.00127) MIN. NICKEL OVERALL.
 "D" - .000030/(.00076) MIN. SELECT GOLD AND .000100/(.00254) MIN. SELECT MATTE TIN OVER .000050/(.00127) MIN. NICKEL OVERALL.
 "E" - .000100/(.00254) MIN. MATTE TIN OVER .000050/(.00127) MIN. NICKEL OVERALL.
- MOUNTING OPTIONS:
 "1" - PEGS
 "2" - FLANGES
- ITEM NO'S. PRECEDED BY AN "X" IN THE CHART ON SHEET 2 ARE NOT AVAILABLE.
- PRODUCT SPECIFICATION: PS-5556-001.



RECOMMENDED HOLE LAYOUT FOR .070/(1.78) MAX. THICK P.C. BOARD. (PEG MOUNT)

2	E4
1	E4
SHT.	REV.

ADDED -0017 & 0018 EC NO: UCP2007-2509 DRAWING STEWART 2007/04/12 CHKD: GPOLGAR 2007/04/13 APPR: APATEL 2007/04/19	QUALITY SYMBOLS ▽=0 ▽=0	GENERAL TOLERANCES (UNLESS SPECIFIED) 4 PLACES ± --- ± --- 3 PLACES ± --- ± .15 2 PLACES ± 0.38 ± --- 1 PLACE ± --- ± --- ANGULAR ±1/2°	DIMENSION STYLE IN/MM DRAWN BY DATE FRY 12/28/92 CHECKED BY DATE FRY 12/28/92 APPROVED BY DATE SILBERNAGLE 12/28/92 MATERIAL NO.	SCALE 4:1 DESIGN UNITS METRIC THIRD ANGLE PROJECTION	TITLE SELECTIVELY-LOADED RIGHT ANGLE HEADER ASSEMBLY. (MINI-FIT, JR. SERIES)
		DRAFT WHERE APPLICABLE MUST REMAIN WITHIN DIMENSIONS	SEE SHEET 2 THIS DRAWING CONTAINS INFORMATION THAT IS PROPRIETARY TO MOLEX INCORPORATED AND SHOULD NOT BE USED WITHOUT WRITTEN PERMISSION	MOLEX MOLEX INCORPORATED DOCUMENT NO. SDA-43215-* SHEET NO. 1 OF 2	

12 11 10 9 8 7 6 5 4 3 2 1

ITEM NO.	CKT. SIZE	CHARACTERISTIC DESCRIPTION	HOUSING OPTION	PLATING	LETTER INDICATES PIN PLATING REQUIRED AT EACH CIRCUIT LOCATION. "-" = VOID CIRCUIT. SEE NOTE 5 ON SHEET 1.																								DIM 'E' REF.
					1	2	3	4	5	6	7	8	9	10	11	12	13	14	15	16	17	18	19	20	21	22	23	24	
X 43215-0001	24	24A2B	FLANGE	B	B	B	B	-	-	-	-	-	-	B	B	B	B	B	B	-	-	-	-	-	-	B	B	B	.13 (3.5)
43215-0002	08	08A1A	PEGS	A	A	-	-	A	A	-	-	A	-	-	-	-	-	-	-	-	-	-	-	-	-	-	-	.13 (3.5)	
X 43215-0003	16	16B1A	PEGS	A	A	A	A	A	A	A	A	A	A	A	A	A	A	A	A	-	A	-	-	-	-	-	-	.13 (3.5)	
X 43215-0004	16	16B1A	PEGS	A	A	A	A	A	A	A	A	A	A	A	A	A	A	A	A	-	-	-	-	-	-	-	-	.13 (3.5)	
43215-0005	24	24A1B	PEGS	B	-	B	-	B	-	B	-	B	-	B	-	B	-	B	-	B	-	B	-	B	-	B	-	.13 (3.5)	
43215-0006	08	08B1A	PEGS	A	A	A	A	A	A	-	-	A	-	-	-	-	-	-	-	-	-	-	-	-	-	-	-	.13 (3.5)	
43215-0007	08	08B1B	PEGS	B	-	-	-	-	B	B	B	B	-	-	-	-	-	-	-	-	-	-	-	-	-	-	-	.13 (3.5)	
43215-0008	06	06B1A	PEGS	A	-	A	A	A	A	A	-	-	-	-	-	-	-	-	-	-	-	-	-	-	-	-	-	.13 (3.5)	
43215-0009	06	06B1B	PEGS	B	-	B	B	B	B	B	-	-	-	-	-	-	-	-	-	-	-	-	-	-	-	-	-	.13 (3.5)	
43215-0010	24	24B2C	FLANGE	C	C	C	C	C	C	C	C	C	C	C	C	C	C	C	C	C	C	C	C	C	C	C	C	.32 (8.1)	
43215-0011	24	24B2C	FLANGE	C	C	C	C	C	C	C	C	C	C	C	C	C	C	C	C	C	C	C	C	C	C	C	C	.38 (9.7)	
43215-0012	22	22A2C	FLANGE	C	C	C	C	C	C	C	C	C	C	C	C	C	C	C	C	C	C	C	C	C	C	C	C	.38 (9.7)	
43215-0013	22	22A1C	PEGS	C	C	C	C	C	C	C	C	C	C	C	C	C	C	C	C	C	C	C	C	C	C	C	C	.38 (9.7)	
43215-0014	10	10B1A	PEGS	A	A	A	A	A	A	A	A	A	A	-	-	-	-	-	-	-	-	-	-	-	-	-	-	.13 (3.5)	
43215-0015	10	10B1A	PEGS	A	A	A	A	A	-	A	A	A	A	A	-	-	-	-	-	-	-	-	-	-	-	-	-	.13 (3.5)	
43215-0016	08	08B1A	PEGS	A	A	-	A	A	A	-	A	A	-	-	-	-	-	-	-	-	-	-	-	-	-	-	-	.13 (3.5)	
43215-0017	14	14B2D	FLANGE	D	D	D	D	D	D	D	D	D	D	D	D	D	D	D	D	-	-	-	-	-	-	-	-	.43 (11.0)	
43215-0018	14	14B2E	FLANGE	E	E	E	E	E	E	E	E	E	E	E	E	E	E	E	E	-	-	-	-	-	-	-	-	.43 (11.0)	

CHARACTERISTICS LEGEND:

CIRCUIT SIZE (02-24) **** * ***

HOUSING MATERIAL **** * ***

A = NYLON 6/6, U.L. 94V-2, COLOR: NATURAL
 B = NYLON 6/6, U.L. 94V-0, COLOR: NATURAL

MOUNTING OPTION **** * ***

1 = PEGS
 2 = FLANGES

PLATING COMBINATION **** * ***

A = 200 M.I. TIN
 B = 30 M.I. GOLD
 C = 100 M.I. TIN
 D = 30 M.I. SELECT GOLD
 E = 100 M.I. MATTE TIN

SEE SHEET ONE EC NO: UCP2007-2509 DRAWING STEWART 2007/04/12 CHKD: GPOLGAR 2007/04/13 APPR: APATEL 2007/04/19 REV: E4	QUALITY SYMBOLS	GENERAL TOLERANCES (UNLESS SPECIFIED)	DIMENSION STYLE	SCALE	DESIGN UNITS	THIRD ANGLE PROJECTION															
	$\nabla=0$ $\nabla=0$	<table border="1"> <tr> <th></th> <th>mm</th> <th>INCH</th> </tr> <tr> <td>4 PLACES</td> <td>± .005</td> <td>± .0005</td> </tr> <tr> <td>3 PLACES</td> <td>± .005</td> <td>± .0005</td> </tr> <tr> <td>2 PLACES</td> <td>± .005</td> <td>± .0005</td> </tr> <tr> <td>1 PLACE</td> <td>± .005</td> <td>± .0005</td> </tr> </table>		mm	INCH	4 PLACES	± .005	± .0005	3 PLACES	± .005	± .0005	2 PLACES	± .005	± .0005	1 PLACE	± .005	± .0005	IN/MM	4:1	METRIC	
		mm	INCH																		
	4 PLACES	± .005	± .0005																		
3 PLACES	± .005	± .0005																			
2 PLACES	± .005	± .0005																			
1 PLACE	± .005	± .0005																			
DESCRIPTION	<table border="1"> <tr> <td>DRAWN BY</td> <td>DATE</td> </tr> <tr> <td>FRY</td> <td>12/28/92</td> </tr> <tr> <td>CHECKED BY</td> <td>DATE</td> </tr> <tr> <td>FRY</td> <td>12/28/92</td> </tr> <tr> <td>APPROVED BY</td> <td>DATE</td> </tr> <tr> <td>SILBERNAGLE</td> <td>12/28/92</td> </tr> </table>	DRAWN BY	DATE	FRY	12/28/92	CHECKED BY	DATE	FRY	12/28/92	APPROVED BY	DATE	SILBERNAGLE	12/28/92	TITLE	SELECTIVELY-LOADED RIGHT ANGLE HEADER ASSEMBLY. (MINI-FIT, JR. SERIES)						
DRAWN BY	DATE																				
FRY	12/28/92																				
CHECKED BY	DATE																				
FRY	12/28/92																				
APPROVED BY	DATE																				
SILBERNAGLE	12/28/92																				
		<table border="1"> <tr> <td>MATERIAL NO.</td> <td>DOCUMENT NO.</td> <td>SHEET NO.</td> </tr> <tr> <td></td> <td>SDA-43215-*</td> <td>2 OF 2</td> </tr> </table>	MATERIAL NO.	DOCUMENT NO.	SHEET NO.		SDA-43215-*	2 OF 2	MOLEX INCORPORATED												
MATERIAL NO.	DOCUMENT NO.	SHEET NO.																			
	SDA-43215-*	2 OF 2																			