

# Customer Information Sheet

DRAWING No.: S542-XXAX

SHEET 3 OF 3

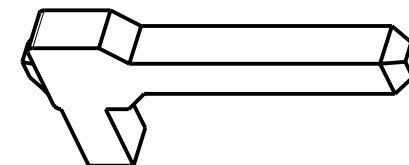
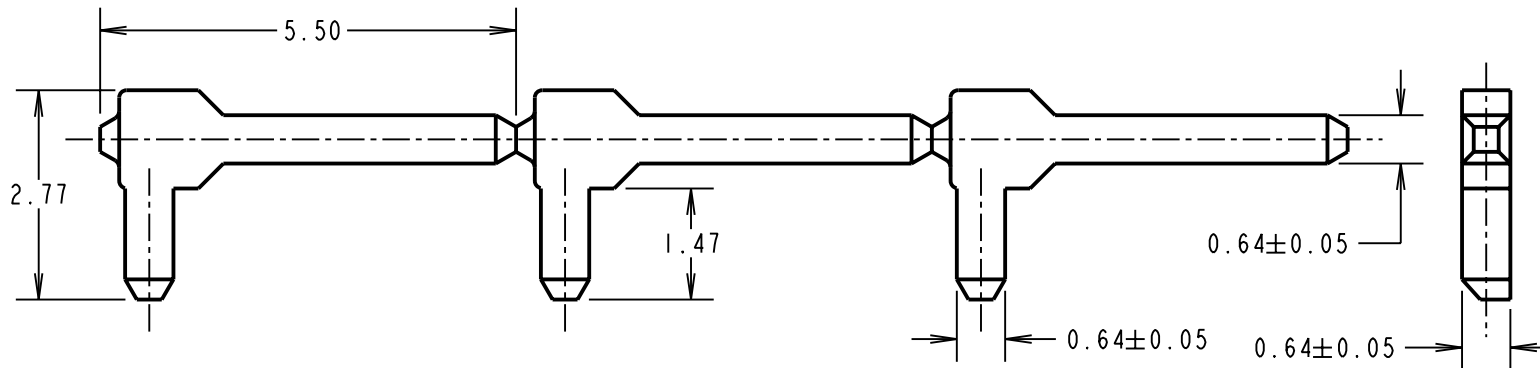
IF IN DOUBT - ASK

©

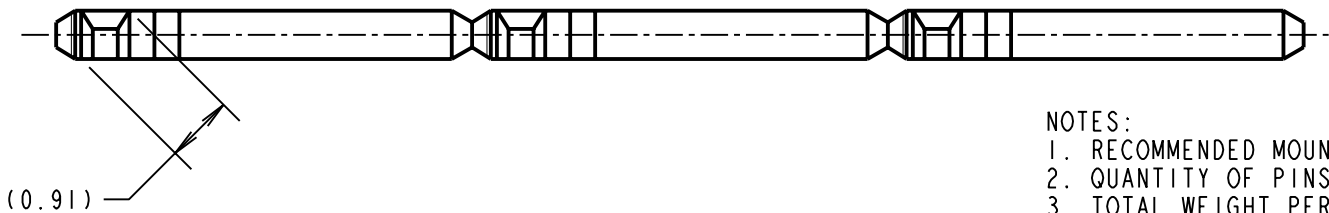
NOT TO SCALE

THIRD ANGLE PROJECTION

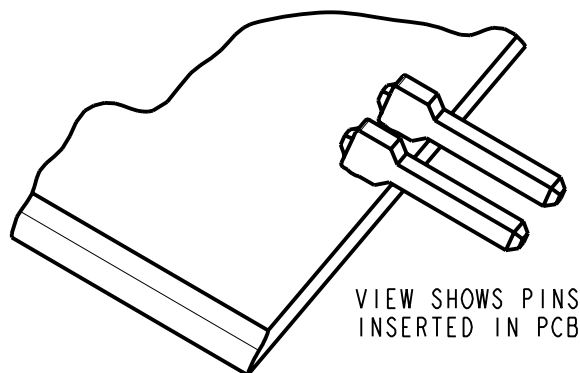
ALL DIMENSIONS IN mm



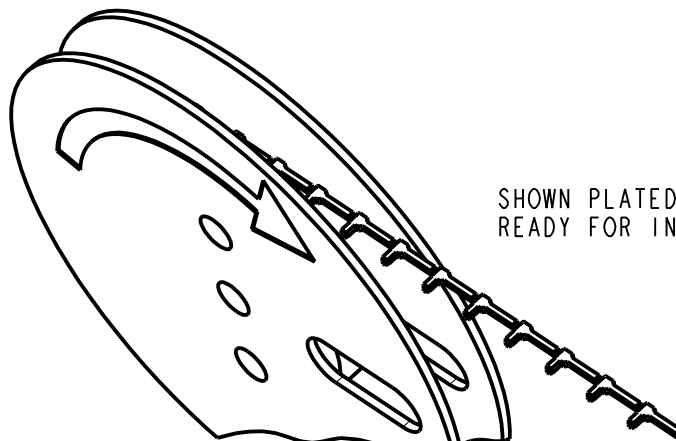
ORDER CODE  
**S542 - XXAX**  
 FINISH  
 06 - TIN/LEAD  
 46 - 100% TIN



- NOTES:  
 1. RECOMMENDED MOUNTING FINISHED HOLE SIZE =  $\varnothing 0.76-0.69$ mm.  
 2. QUANTITY OF PINS PER REEL = 50K  
 3. TOTAL WEIGHT PER REEL = 3.35kg.



VIEW SHOWS PINS  
 INSERTED IN PCB



SHOWN PLATED REELED  
 READY FOR INSERTION

CP	6	03.02.10	8128
NAME	ISS.	DATE	C/NOTE
APPROVED: C.PENROSE			
CHECKED: R.ADDE			
DRAWN: MARK G PLESTED			
CUSTOMER REF.:			
ASSEMBLY DRG:			

**HARWIN**

HARWIN USA  
 TEL: 603 893 5376  
 FAX: 603 893 5396  
 mis@harwin.com

HARWIN Europe (UK)  
 TEL: 023 9231 4545  
 FAX: 023 9231 4590  
 mis@harwin.co.uk

HARWIN Asia  
 TEL: +65 6 779 4909  
 FAX: +65 6 779 3868  
 mis@harwin.com.sg

THIS DRAWING AND ANY INFORMATION OR DESCRIPTIVE MATTER SET OUT HEREON ARE CONFIDENTIAL AND COPYRIGHT PROPERTY OF THE HARWIN GROUP AND MUST NOT BE DISCLOSED, LOANED, COPIED OR USED FOR MANUFACTURING, TENDERING OR FOR ANY OTHER PURPOSE WITHOUT THEIR WRITTEN PERMISSION.

TOLERANCES  
 X. = ±1mm  
 X.X = ±0.25mm  
 X.XX = ±0.10mm  
 X.XXX = ±0.01mm  
 ANGLES = ±5°  
 UNLESS STATED

MATERIAL:  
 BRASS CW505L R350  
 TO BSEN1652:1997  
 FINISH: SEE ABOVE  
 S/AREA: mm<sup>2</sup>

TITLE:  
 90 DEGREE TERMINAL PIN  
 DRAWING NUMBER:  
**S542-XXAX**

SHT  
 3  
 OF  
 3