

PLEASE CHECK WWW.MOLEX.COM FOR LATEST PART INFORMATION

Part Number: [0350689812](#)
Status: **Active**
Description: MP-Lock™ Quick Disconnect, Female, for 16-20 AWG (1.31-0.52mm²), Metal Strip, Tab 4.75 by 0.30mm (.187 by .012"), Pre-Tin Plated

Documents:

[Drawing \(PDF\)](#) [RoHS Certificate of Compliance \(PDF\)](#)
[Product Specification PS-35189-001 \(PDF\)](#)

Agency Certification

CSA LR95446
 UL E92853

General

Product Family Quick Disconnects
 Series [35068](#)
 Crimp Quality Equipment Yes
 Product Name MP-Lock™
 Type Quick Disconnect

Physical

Barrel Type Open
 Gender Female
 Glow-Wire Compliant No
 Insulation None
 Lock to Mating Part Yes
 Orientation Straight
 Packaging Type Reel
 Polarized to Mating Part Yes
 Tab Thickness 0.30mm (.012")
 Tab Width 4.75mm (.187")
 Temperature Range - Operating -40°C to +105°C
 Termination Interface: Style Crimp or Compression
 Wire Insulation Diameter 3.40mm (.134") max.
 Wire Size AWG 16, 18, 20
 Wire Size mm² 0.50 - 1.30

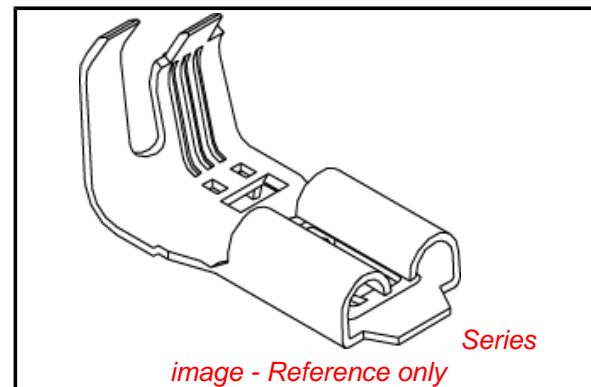
Electrical

Voltage - Maximum 300V

Material Info

Reference - Drawing Numbers

Product Specification PS-35189-001, RPS-35068-001
 Sales Drawing SD-35068-9812



EU RoHS

ELV and RoHS Compliant
REACH SVHC Contains SVHC: No
Halogen-Free Status

China RoHS



Need more information on product environmental compliance?

Email productcompliance@molex.com
 For a multiple part number RoHS Certificate of Compliance, [click here](#)

Please visit the [Contact Us](#) section for any non-product compliance questions.

Search Parts in this Series

[35068Series](#)

Use With

[35189](#) , [35817](#) , [35961](#)

Application Tooling | FAQ

Tooling specifications and manuals are found by selecting the products below. Crimp Height Specifications are then contained in the Application Tooling Specification document.

Global

Description	Product #
Mini-Mac™ Applicator	0638014300

Japan

Description	Product #
End-Feed Applicator	0573663100

DWG. NO.
SD 35068-9812

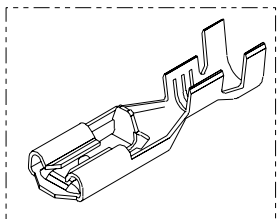
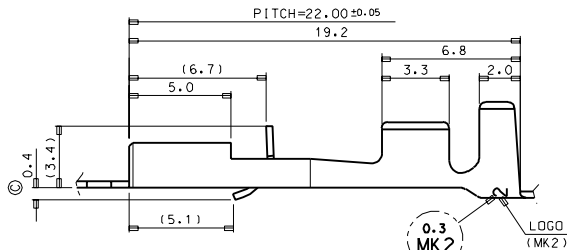
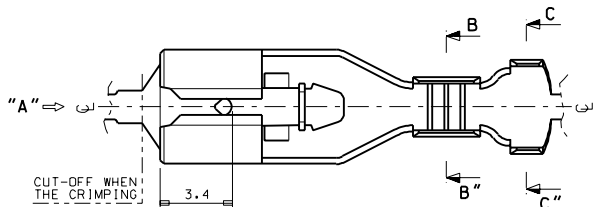
SIMILAR ITEM

PROJECT NO.
1187 P-LOCK CONN.

C

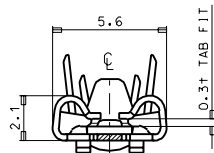
B

DO NOT SCALE DRAWING
DIMENSION IN METRIC

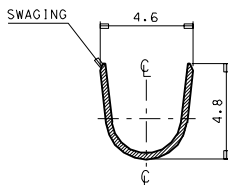
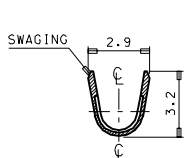


NOTES

1. MATERIAL : BRASS, 0.30 mm THICKNESS
2. FINISH : PRE-PLATED TIN
3. MATING TAB THICKNESS : 0.30 mm
4. APPLICABLE HOUSING : 35189-0110
5. RECOMMENDED LENGTH OF WIRE STRIP IS 4.4-5.0mm.
6. APPLICABLE WIRE : AWG #20-#16
INSULATION DIA. : ϕ 1.9-3.4mm



VIEW "A"



1	C
1	B
1	A
	SHT REV
	REVISE ON CAD ONLY

REVISED	EC NO. KDR1997-0160	QUALITY SYMBOLS	GENERAL TOLERANCES (UNLESS SPECIFIED)	SCALE	DESIGN UNITS	THIRD ANGLE PROJECTION	DIMENSIONS:			SHT	REV
	DRWG. J.S.KANG 97/12/01	MAJOR	mm	6/1	mm		mm	mm	mm	mm	A
	CHKR. B.K.CHOI	CRITICAL	INCH	±	mm		INCH	mm	mm	mm	A
	APPR. C.W.LEE	DESCRIPTION	4 PLACES	±	INCH		mm	mm	mm	mm	A
REV			3 PLACES	±	mm	mm	mm	mm	A		
			2 PLACES	±	mm	mm	mm	mm	A		
			1 PLACE	±	mm	mm	mm	mm	A		
			ANGULAR: ±	1°							
DRAFT WHERE APPLICABLE MUST REMAIN WITHIN DIMENSIONS		THIS DRAWING CONTAINS INFORMATION THAT IS PROPRIETARY TO MOLEX INCORPORATED AND SHOULD NOT BE USED WITHOUT WRITTEN PERMISSION.		CAD FILENAME		MATERIAL NO.	DRAWING NO.		SHEET NO.		
				s35068a.dgn		SEE NOTES	SD 35068-9812		1 of 1		
						MOLEX INCORPORATED KOREA					