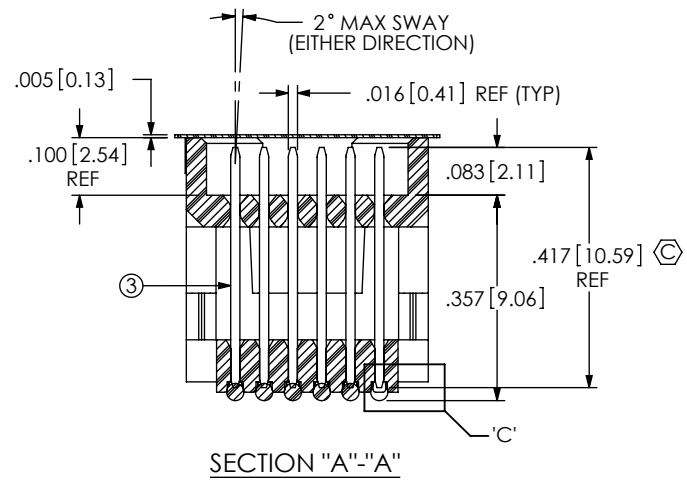
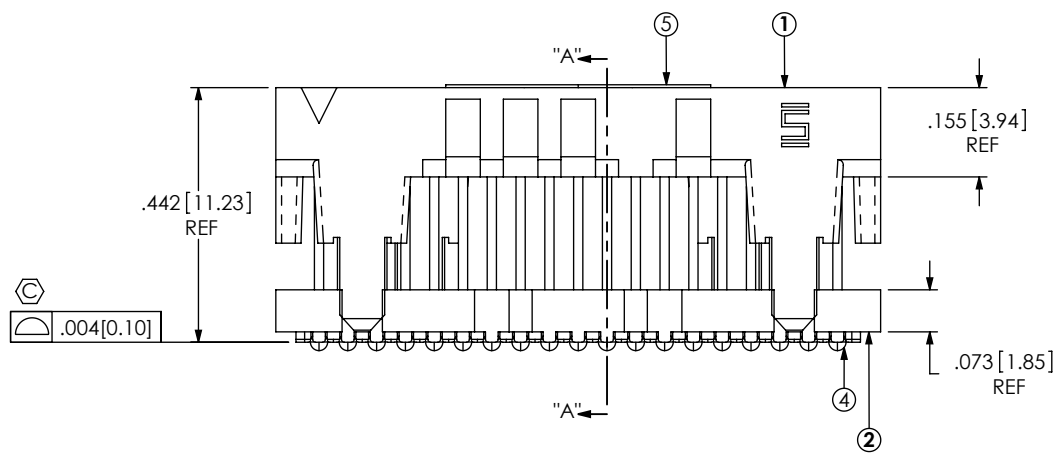
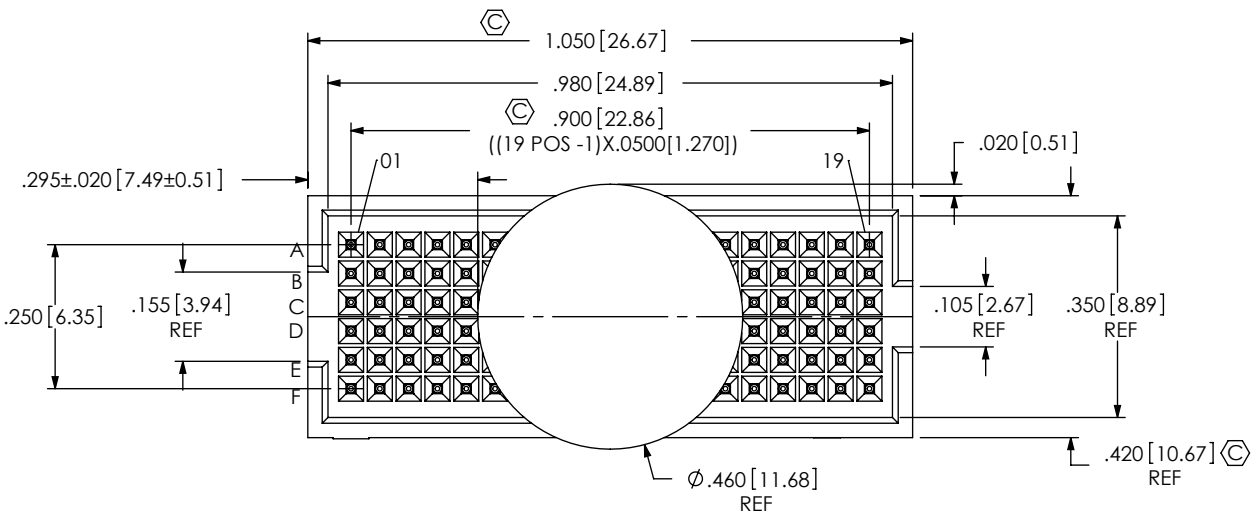
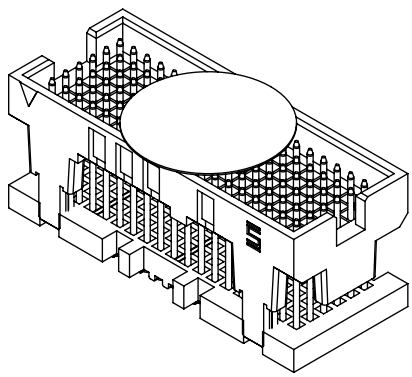


DO NOT SCALE FROM THIS PRINT

- NOTES:
 1. 6 ROW, 19 POSITION NOT AVAILABLE AS STANDARD. USE LEAD FREE SOLDER BALLS.
 2. Ⓢ REPRESENTS A CRITICAL DIMENSION.
 3. MAXIMUM BURR ALLOWANCE: .0015[0.038]
 4. MAXIMUM CUT FLASH: .010[0.25].
 5. MAXIMUM ALLOWABLE BOW: TOP/BOTTOM: .006[0.15], SIDE/SIDE: .003[0.08].
 6. PARTS TO BE PACKAGED IN TAPE & REEL. FOR QTY'S LESS THAN 125 PCS, NO TRAILER OR LEADER WILL BE SUPPLIED.



| ITEM NO. | PART NUMBER | QUANTITY | MATERIAL |
|----------|-----------------|----------|-----------------------------|
| 1 | ASP-103598-03-B | 1.0000 | UL 94V0, COLOR: BLACK |
| 2 | ASP-103599-01-B | 1.0000 | UL 94V0, COLOR: BLACK |
| 3 | T-1R27-12B-H-1 | 114.00 | BRASS ALLOY 260, 3/4 HARD |
| 4 | SDB-030-9653 | 114.00 | LEAD FREE COMPOSITE 96% TIN |
| 5 | K-850-650 | .89000 | POLYIMIDE FILM |
| 6 | CT-ASP3112MS | .00571 | CONDUCTIVE POLYMER |

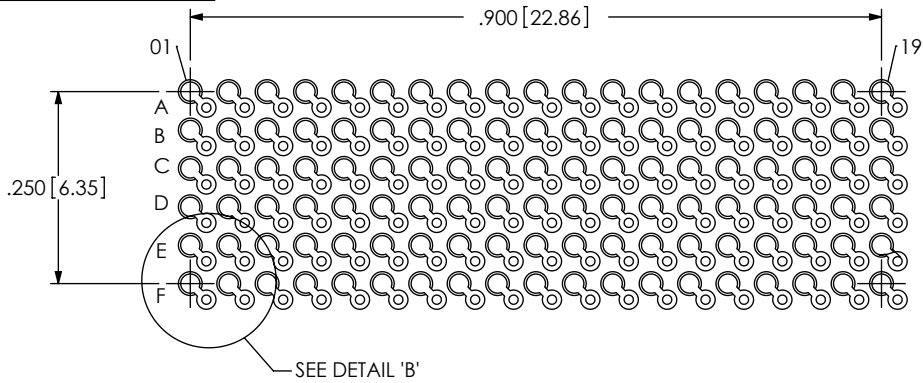
| | | |
|--------------|---|--|
| NON STANDARD | UNLESS OTHERWISE SPECIFIED, DIMENSIONS ARE IN INCHES. | PROPRIETARY NOTE THIS DOCUMENT CONTAINS INFORMATION CONFIDENTIAL AND PROPRIETARY TO SAMTEC, INC. AND SHALL NOT BE REPRODUCED OR TRANSFERRED TO OTHER DOCUMENTS OR DISCLOSED TO OTHERS OR USED FOR ANY PURPOSE OTHER THAN THAT WHICH IT WAS OBTAINED WITHOUT THE EXPRESSED WRITTEN CONSENT OF SAMTEC, INC. |
| COMPONENT | TOLERANCES ARE: DECIMALS ANGLES .XX: ±.01 2° .XXX: ±.005 .XXXX: ±.0020 | |
| ASSEMBLY | X | |
| TOOLING | | |
| PROCESS | DO NOT SCALE DRAWING SHEET SCALE: 3:1 | |
| PACKAGING | PLATING: CONTACT AREA: .000030 GOLD OVER .000050 NICKEL REMAINDER: .000003 GOLD OVER .000050 NICKEL | |
| OTHER | F:\DWG\MISC\MKTG\ASP-153860-01-MKT.SLDDRW | |

samtec
 520 PARK EAST BLVD, NEW ALBANY, IN 47150
 PHONE: 812-944-6733 FAX: 812-948-5047
 e-Mail: info@SAMTEC.com code 55322

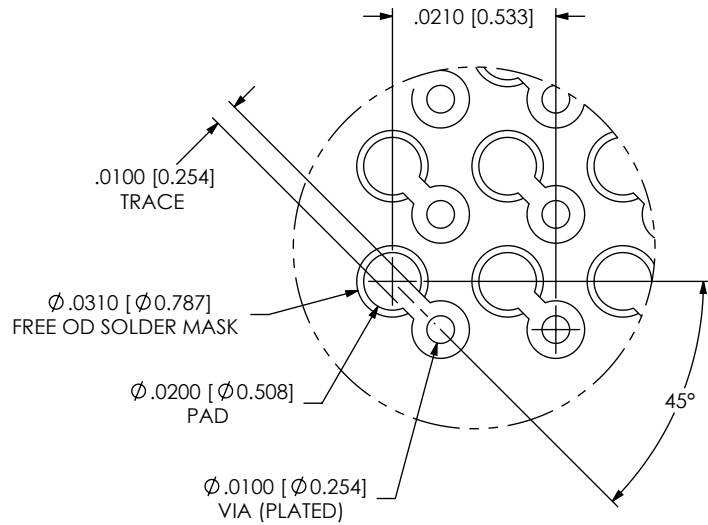
DESCRIPTION:
 VITA 42 (LEAD FREE) SOCKET ASSEMBLY

DWG. NO.
ASP-153860-01

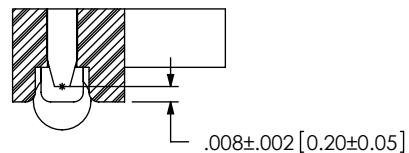
BY: J. BROWNING 03/04/2010 SHEET 1 OF 2



RECOMMENDED BOARD LAYOUT
SCALE 4:1

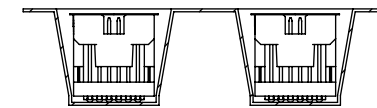
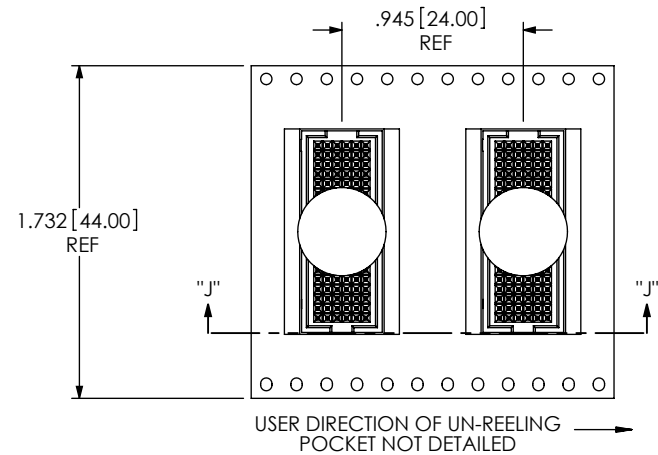
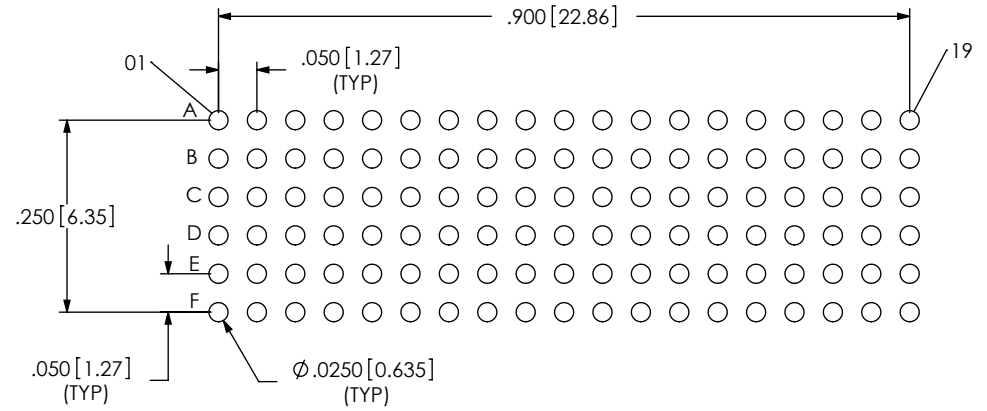


DETAIL 'B'
SCALE 12:1



DETAIL 'C'
SCALE 10:1

RECOMMENDED STENCIL LAYOUT
STENCIL TO BE .0060[0.152] THICK



SECTION "J"-"J"
SCALE 1:1

PACKAGING VIEW
SCALE 1:1

PROPRIETARY NOTE

THIS DOCUMENT CONTAINS INFORMATION CONFIDENTIAL AND PROPRIETARY TO SAMTEC, INC. AND SHALL NOT BE REPRODUCED OR TRANSFERRED TO OTHER DOCUMENTS OR DISCLOSED TO OTHERS OR USED FOR ANY PURPOSE OTHER THAN THAT WHICH IT WAS OBTAINED WITHOUT THE EXPRESSED WRITTEN CONSENT OF SAMTEC, INC.



520 PARK EAST BLVD. NEW ALBANY, IN 47150
PHONE: 812-944-6733 FAX: 812-948-5047
e-Mail: info@SAMTEC.com code 55322

SHEET SCALE: 3:1

DESCRIPTION:
VITA 42 (LEAD FREE) SOCKET ASSEMBLY

DWG. NO.
ASP-153860-01