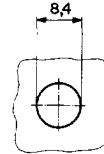
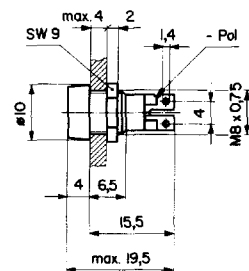
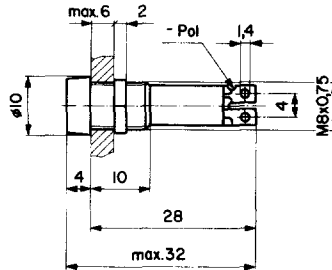
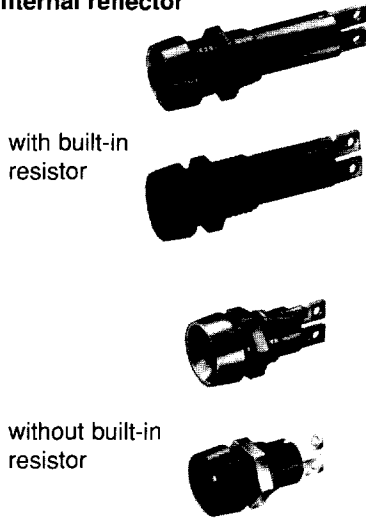


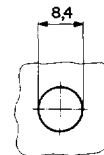
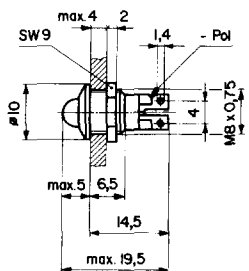
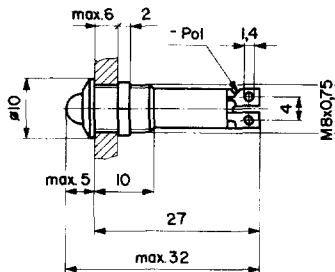
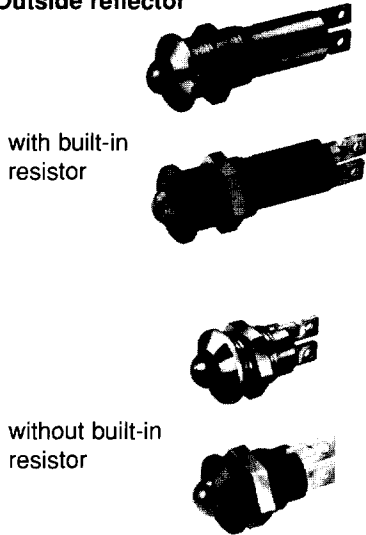
# LFM (with 5mm T1-3/4 LED) IP 40

## Models Dimensions Frontpanel drilling

### Internal reflector



### Outside reflector



## Technical data

### 1. Electrical data

#### Current input

Technical data LED 0925.0059/60/61 see page 91

With built-in resistor

### 2. Other data

#### Solderability

max. 2s 235 °C ( IEC 68 2-20 Test Ta Method 1 )

#### Soldering heat resistance

max. 5s 350 °C ( IEC 68 2-20 Test Tb Method 1B )

#### Ambient temperature

-25°C - + 55°C

#### Storage temperature

-55°C - +100°C

#### Degree of protection

IP 40

### 3. Materials

#### Body

Brass chromium-plated

#### Solder Terminals

Copper tinned





#### Nut

Brass nickel-plated





### 4. Mounting type

#### Frontpanel mounting with solder terminals

# Internal reflector LFM (with 5mm T1-3/4 LED) IP 40

Models	Variations	select your color		Part Numbers		
with built-in resistor  	Body chrome plated	5V	Color of LED	red	<input type="checkbox"/>	0035.0001
			green	<input type="checkbox"/>	0035.0002	
			yellow	<input type="checkbox"/>	0035.0003	
		12V	red	<input type="checkbox"/>	0035.0004	
			green	<input type="checkbox"/>	0035.0005	
			yellow	<input type="checkbox"/>	0035.0006	
		24V	red	<input type="checkbox"/>	0035.0007	
			green	<input type="checkbox"/>	0035.0008	
			yellow	<input type="checkbox"/>	0035.0009	
		28V	red	<input type="checkbox"/>	0035.0010	
			green	<input type="checkbox"/>	0035.0011	
			yellow	<input type="checkbox"/>	0035.0012	
with built-in resistor  	Body black dull	5V	Color of LED	red	<input type="checkbox"/>	0035.4001
			green	<input type="checkbox"/>	0035.4002	
			yellow	<input type="checkbox"/>	0035.4003	
		12V	red	<input type="checkbox"/>	0035.4004	
			green	<input type="checkbox"/>	0035.4005	
			yellow	<input type="checkbox"/>	0035.4006	
		24V	red	<input type="checkbox"/>	0035.4007	
			green	<input type="checkbox"/>	0035.4008	
			yellow	<input type="checkbox"/>	0035.4009	
		28V	red	<input type="checkbox"/>	0035.4010	
			green	<input type="checkbox"/>	0035.4011	
			yellow	<input type="checkbox"/>	0035.4012	
without built-in resistor  	Body chrome plated	Color of LED	red	<input type="checkbox"/>	0035.0701	
		green	<input type="checkbox"/>	0035.0702		
		yellow	<input type="checkbox"/>	0035.0703		
without built-in resistor  	Body black dull	Color of LED	red	<input type="checkbox"/>	0035.0706	
		green	<input type="checkbox"/>	0035.0707		
		yellow	<input type="checkbox"/>	0035.0708		
Accessories	Spring lock washer			<input type="checkbox"/>	0638.1004	

# Outside reflector LFM (with 5mm T1-3/4 LED) IP 40

Models	Variation		select your color	Part Number	
with built-in resistor  	Body chrome plated	5V	Color of LED	red <input type="checkbox"/>	0035.0021
			green <input type="checkbox"/>	0035.0022	
			yellow <input type="checkbox"/>	0035.0023	
		12V	red <input type="checkbox"/>	0035.0024	
			green <input type="checkbox"/>	0035.0025	
			yellow <input type="checkbox"/>	0035.0026	
		24V	red <input type="checkbox"/>	0035.0027	
			green <input type="checkbox"/>	0035.0028	
			yellow <input type="checkbox"/>	0035.0029	
	28V	red <input type="checkbox"/>	0035.0030		
		green <input type="checkbox"/>	0035.0031		
		yellow <input type="checkbox"/>	0035.0032		
with built-in resistor  	Body black dull	5V	Color of LED	red <input type="checkbox"/>	0035.4021
			green <input type="checkbox"/>	0035.4022	
			yellow <input type="checkbox"/>	0035.4023	
		12V	red <input type="checkbox"/>	0035.4024	
			green <input type="checkbox"/>	0035.4025	
			yellow <input type="checkbox"/>	0035.4026	
		24V	red <input type="checkbox"/>	0035.4027	
			green <input type="checkbox"/>	0035.4028	
			yellow <input type="checkbox"/>	0035.4029	
	28V	red <input type="checkbox"/>	0035.4030		
		green <input type="checkbox"/>	0035.4031		
		yellow <input type="checkbox"/>	0035.4032		
without built-in resistor  	Body chrome plated	Color of LED	red <input type="checkbox"/>	0035.0711	
			green <input type="checkbox"/>	0035.0712	
			yellow <input type="checkbox"/>	0035.0713	
without built-in resistor  	Body black dull	Color of LED	red <input type="checkbox"/>	0035.0716	
			green <input type="checkbox"/>	0035.0717	
			yellow <input type="checkbox"/>	0035.0718	
Accessories	Spring lock washer		<input type="checkbox"/>	0638.1004	

