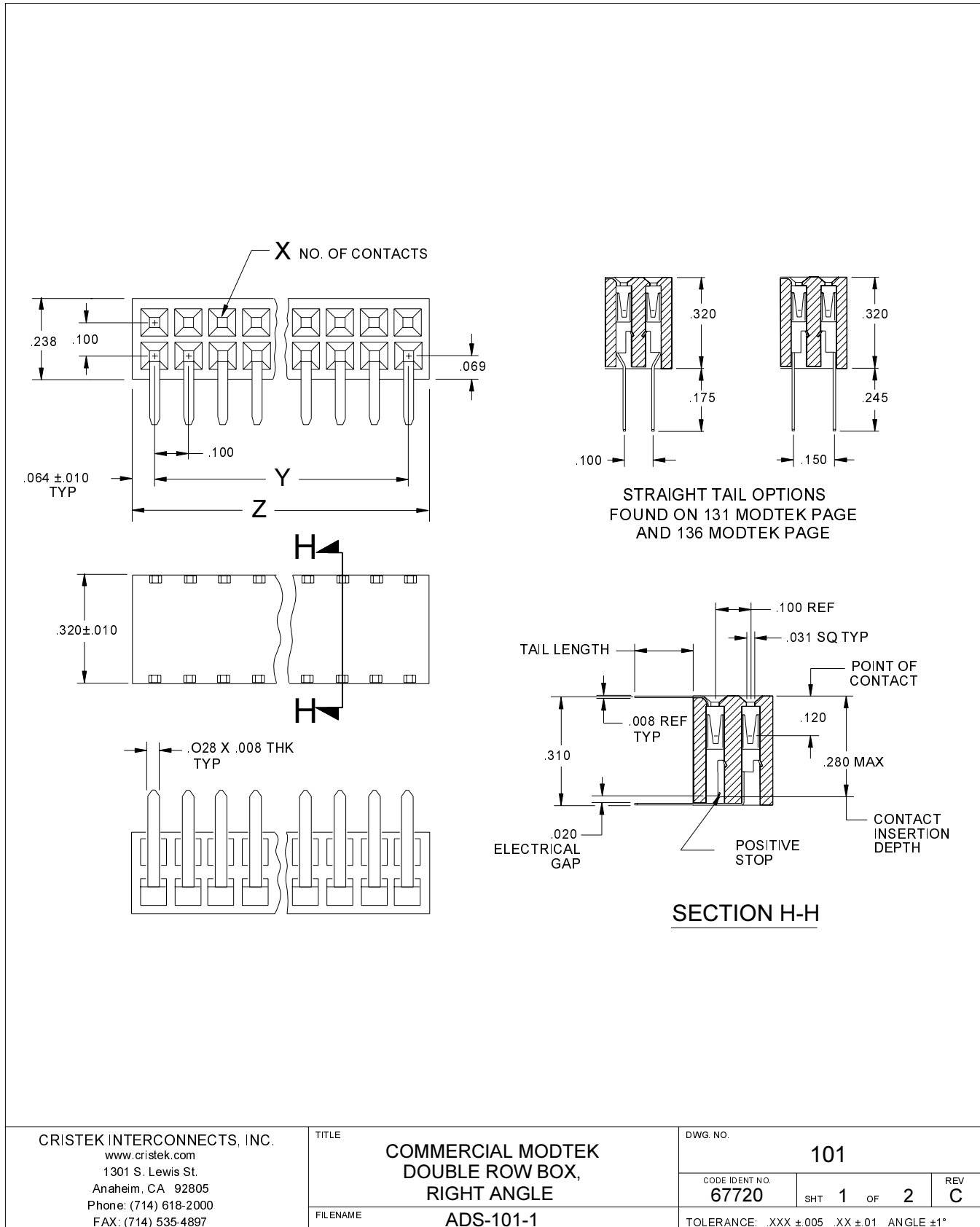
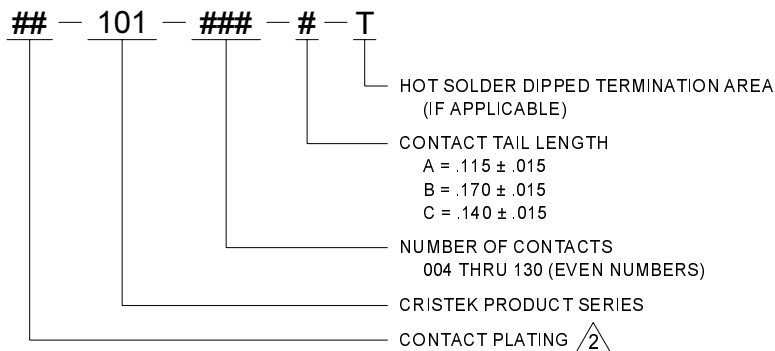


5.2 PC BOARD CONNECTORS / MOTS



| X NO. OF CONTACTS | NO. OF SPACES | Y ±.010 | Z ±.030 |
|-------------------------|------------------|------------|------------|
| 004 | 1 | .10 | .23 |
| 006 | 2 | .20 | .33 |
| 008 | 3 | .30 | .43 |
| 010 | 4 | .40 | .53 |
| 012 | 5 | .50 | .63 |
| 014 | 6 | .60 | .73 |
| 016 | 7 | .70 | .83 |
| 018 | 8 | .80 | .93 |
| 020 | 9 | .90 | 1.03 |
| 022 | 10 | 1.00 | 1.13 |
| 024 | 11 | 1.10 | 1.23 |
| 026 | 12 | 1.20 | 1.33 |
| 028 | 13 | 1.30 | 1.43 |
| 030 | 14 | 1.40 | 1.53 |
| 032 | 15 | 1.50 | 1.63 |
| 034 | 16 | 1.60 | 1.73 |
| 036 | 17 | 1.70 | 1.83 |
| 038 | 18 | 1.80 | 1.93 |
| 040 | 19 | 1.90 | 2.03 |
| 042 | 20 | 2.00 | 2.13 |
| 044 | 21 | 2.10 | 2.23 |
| 046 | 22 | 2.20 | 2.33 |
| 048 | 23 | 2.30 | 2.43 |
| 050 | 24 | 2.40 | 2.53 |
| 052 | 25 | 2.50 | 2.63 |
| 054 | 26 | 2.60 | 2.73 |
| 056 | 27 | 2.70 | 2.83 |
| 058 | 28 | 2.80 | 2.93 |
| 060 | 29 | 2.90 | 3.03 |
| 062 | 30 | 3.00 | 3.13 |
| 064 | 31 | 3.10 | 3.23 |
| 066 | 32 | 3.20 | 3.33 |

| X NO. OF CONTACTS | NO. OF SPACES | Y ±.010 | Z ±.030 |
|-------------------------|------------------|------------|------------|
| 068 | 33 | 3.30 | 3.43 |
| 070 | 34 | 3.40 | 3.53 |
| 072 | 35 | 3.50 | 3.63 |
| 074 | 36 | 3.60 | 3.73 |
| 076 | 37 | 3.70 | 3.83 |
| 078 | 38 | 3.80 | 3.93 |
| 080 | 39 | 3.90 | 4.03 |
| 082 | 40 | 4.00 | 4.13 |
| 084 | 41 | 4.10 | 4.23 |
| 086 | 42 | 4.20 | 4.33 |
| 088 | 43 | 4.30 | 4.43 |
| 090 | 44 | 4.40 | 4.53 |
| 092 | 45 | 4.50 | 4.63 |
| 094 | 46 | 4.60 | 4.73 |
| 096 | 47 | 4.70 | 4.83 |
| 098 | 48 | 4.80 | 4.93 |
| 100 | 49 | 4.90 | 5.03 |
| 102 | 50 | 5.00 | 5.13 |
| 104 | 51 | 5.10 | 5.23 |
| 106 | 52 | 5.20 | 5.33 |
| 108 | 53 | 5.30 | 5.43 |
| 110 | 54 | 5.40 | 5.53 |
| 112 | 55 | 5.50 | 5.63 |
| 114 | 56 | 5.60 | 5.73 |
| 116 | 57 | 5.70 | 5.83 |
| 118 | 58 | 5.80 | 5.93 |
| 120 | 59 | 5.90 | 6.03 |
| 122 | 60 | 6.00 | 6.13 |
| 124 | 61 | 6.10 | 6.23 |
| 126 | 62 | 6.20 | 6.33 |
| 128 | 63 | 6.30 | 6.43 |
| 130 | 64 | 6.40 | 6.53 |



1. MATERIALS:

INSULATOR - PHENOLIC PER MIL-M-14
CONTACT - COPPER ALLOY

2. FINISH: Δ

CONTACT PLATING OPTIONS

- 1 = .000010 INCH THICK GOLD ENTIRE CONTACT
- 30 = .000030 INCH THICK GOLD POINT OF CONTACT
.000005 INCH THICK GOLD ON BALANCE
- 53 = POINT OF CONTACT TO BE PLATED PER MIL-G-45204 TYPE II,
CLASS 1, GRADE C OVER NICKEL PER QQ-N-290 CLASS 2
.000040 MIN. REMAINDER OF CONTACT TO HAVE A FLASH OF
GOLD OVER NICKEL.
- 55 = ENTIRE CONTACT TO BE PLATED PER MIL-G-45204 TYPE II,
CLASS 1, GRADE C OVER NICKEL PER QQ-N-290 CLASS 2
.000040 MIN.

3. SPECIFICATIONS:

CURRENT RATING 3 AMPS MAX
TEMPERATURE RATING -65° C TO +125° C
INSULATION RESISTANCE 5000 MEGOHMS MIN AT 500 VDC
DWV AT SEA LEVEL 750 VAC
CONTACT RESISTANCE 12 MILLIOHMS MAX AT 3 AMPS
INSERTION FORCE 6 oz MAX
WITHDRAWAL FORCE 0.5 oz MIN

4. ADDITIONAL INFORMATION:

CONFORMS TO ELECTRICAL & PERFORMANCE
REQUIREMENTS OF M55302/128.
FOR HOT SOLDER DIP OR OTHER OPTIONS,
CONTACT CRISTEK.

| | | | | | | | |
|--|----------|---|----------------|-------|----------|--------|----------|
| CRISTEK INTERCONNECTS, INC. www.cristek.com 1301 S. Lewis St. Anaheim, CA 92805 Phone: (714) 618-2000 FAX: (714) 535-4897 | TITLE | COMMERCIAL MODTEK DOUBLE ROW BOX, RIGHT ANGLE | | | DWG. NO. | 101 | |
| | FILENAME | ADS-101-2 | CODE IDENT NO. | 67720 | SHT | 2 OF 2 | REV C |
| TOLERANCE: .XXX ±.005 .XX ±.01 ANGLE ±1° | | | | | | | |