

ADAPTER

Between Series, 3.5mm / 1.85mm, DC-34 GHz

SPECIFICATIONS:

Models: 5254, 5255, 5256, 5257

RoHS
Compliant

AEROFLEX
A passion for performance.

Electrical:

Frequency Range _____ DC - 34 GHz
VSWR _____ 1.30:1 Max.
Impedance _____ 50 Ohms
Operating Temp. Range _____ -65°C to +125°C

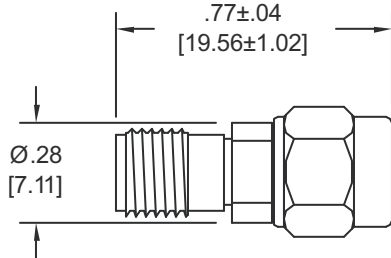
Mechanical:

3.5mm Connectors _____ Passivated Stainless Steel
Mates both Mechanically and Electrically with
SMA, and K* Series Connectors
1.85mm Connectors _____ Passivated Stainless Steel
Mates with 2.4mm & V* Connectors
Conductors _____ Gold Plated Beryllium Copper

*V & *K are trademarks of Anritsu Corp.

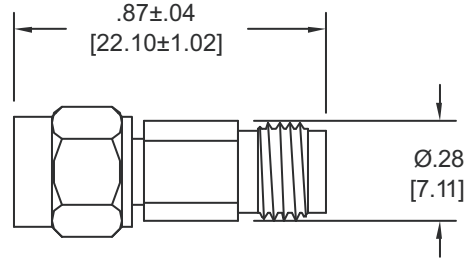
Model Number: **5254**

3.5mm Female to 1.85mm Male



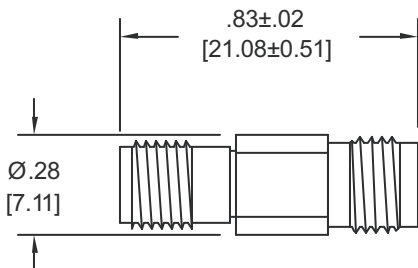
Model Number: **5255**

3.5mm Male to 1.85mm Female



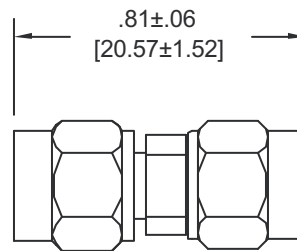
Model Number: **5256**

3.5mm Female to 1.85mm Female



Model Number: **5257**

3.5mm Male to 1.85mm Male



Note: Dimensions in Brackets are Expressed in Millimeters and are for Reference Only.

5257: REV -

AEROFLEX
INMET

Aeroflex / Inmet, Inc. • 300 Dino Drive, Ann Arbor, MI 48103 • U.S.A.
888-244-6638 or 734-426-5553 • FAX: 734-426-5557
www.aeroflex.com/inmet • inmet@aeroflex.com