

Part/Keyword Search



Detailed Drawing



Printer Friendly Datasheet

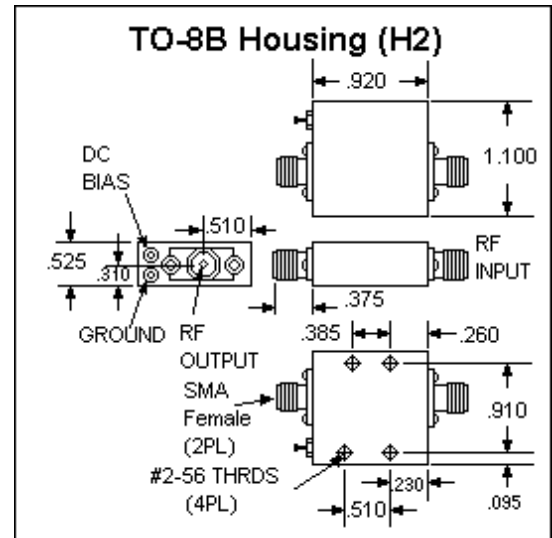
BR3005 / SBR3005*

* Part number for additional environmental screening.

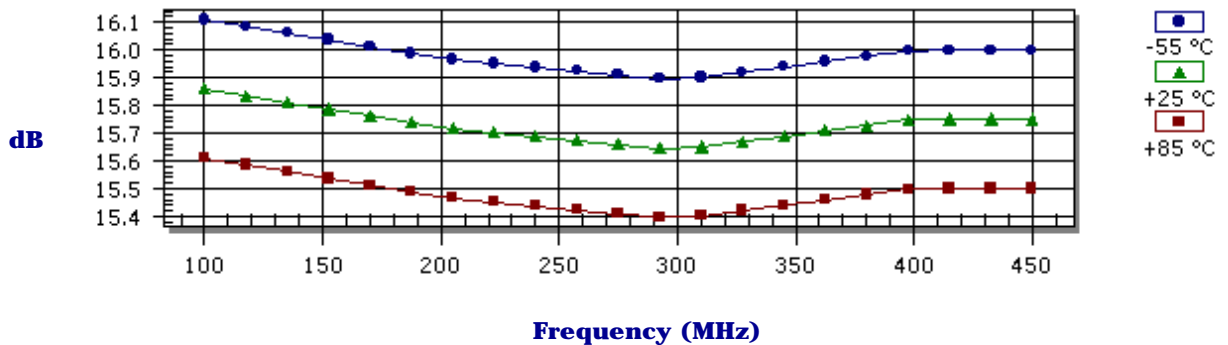
Performance Data

Frequency	100.0 - 450.0 MHz
Gain	16.0 dB Typical 14.5 dB Min
Noise Figure	1.8 dB Typical 2.0 dB Max
P _{1dB}	13.0 dBm Typical 11.0 dBm Min
3 rd Order Intercept	27.0 dBm Typical
2 nd Order Intercept	39.0 dBm Typical
VSWR	1.8/2.0 Input Typ/Max 1.8/2.0 Output Typ/Max
Reverse Isolation	-19.0 dB Typical -18.0 dB Min
Power Supply	15.0 Volts 25.0 mA
Operating Temperature	-10.0 - 70.0 °C

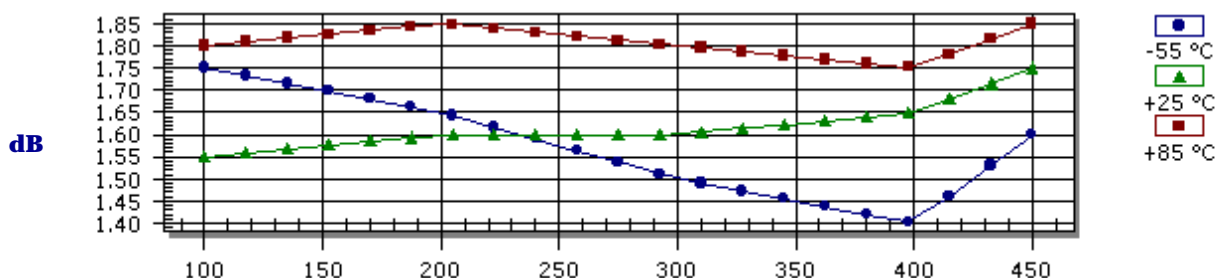
Package Drawing



Gain



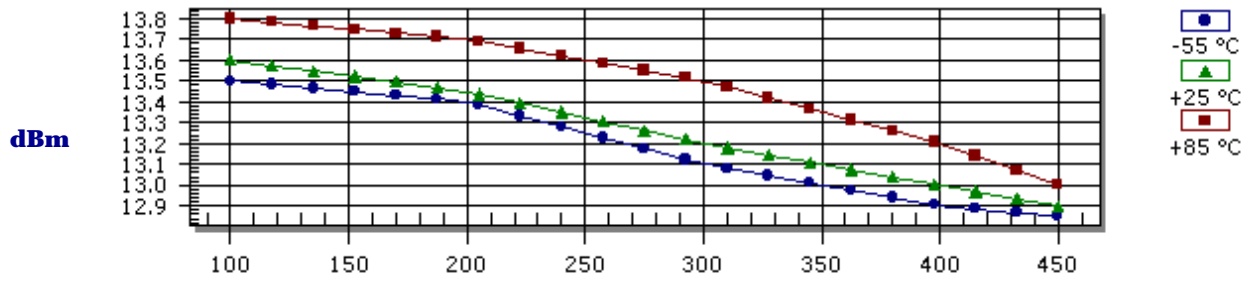
Noise Figure



- Products
- Amplifiers
- VCOs
- Limiting Amplifiers
- Switches
- Linearizers
- Limiters
- Analog Attenuators
- Digital Attenuators
- Detectors

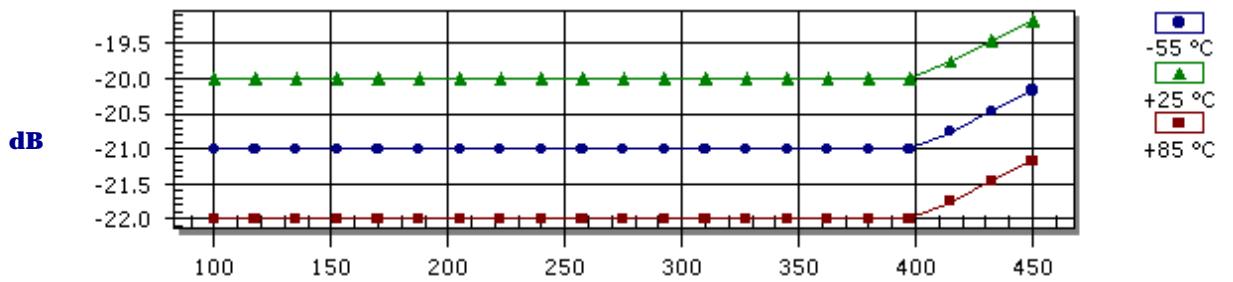
Frequency (MHz)

P_{1dB} Compression Point



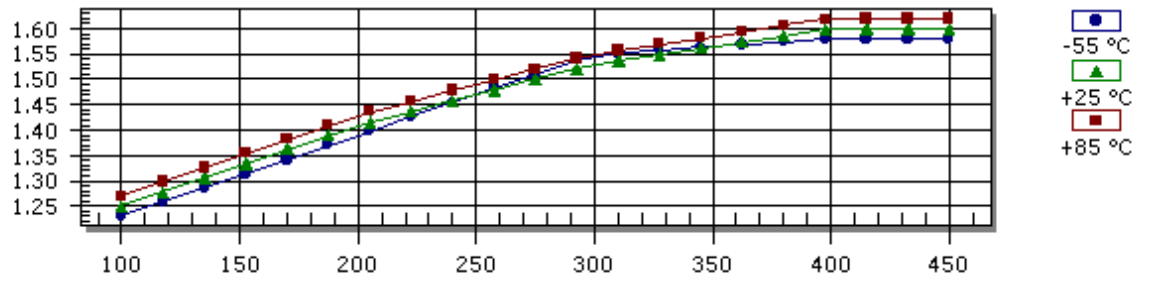
Frequency (MHz)

Reverse Isolation



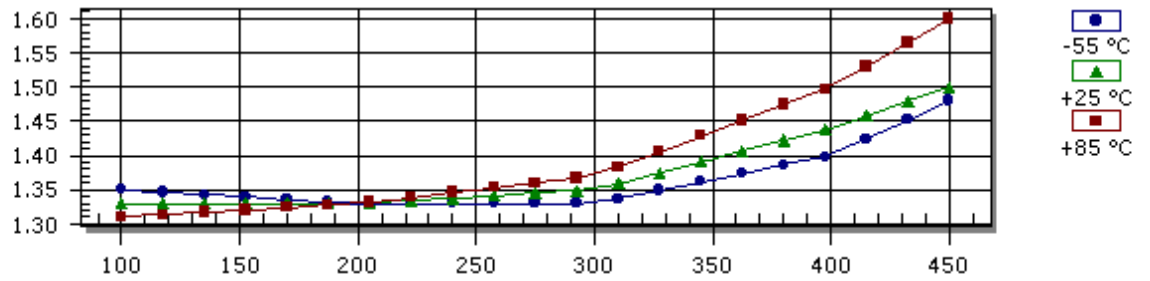
Frequency (MHz)

Input VSWR



Frequency (MHz)

Output VSWR



Frequency (MHz)

S-Parameters

Frequency	S11 Mag	S11 Ang	S21 Mag	S21 Ang	S12 Mag	S12 Ang	S22 Mag	S22 Ang
100.0	0.110	-138.00	6.210	151.00	0.100	151.00	0.140	-39.00
200.0	0.170	-155.00	6.110	121.00	0.100	120.00	0.140	-67.00
300.0	0.210	-180.00	6.050	92.00	0.100	92.00	0.150	-87.00
400.0	0.230	141.00	6.130	60.00	0.100	64.00	0.180	-102.00
450.0	0.230	115.00	6.130	43.00	0.110	48.00	0.200	-110.00

Absolute Maximum Conditions

Maximum Operating Temperature	-55.0 - 100.0 °C	Maximum Storage Temperature	-62.0 - 125.0 °C
Maximum Case Temperature	125.0 °C	Maximum Supply Voltage	18.0 Volts
Continuous RF Input Power	13.0 dBm	Short Term RF Input Power (1 minute max)	50.0 mW
Maximum Peak Power (3 µsec max)	0.5 W		

Amplifonix | 2707 Black Lake Place | Philadelphia, PA 19154
Tel: 215.464.4000 | FAX: 215.464.4001 | Email: info@amplifonix.com

i2 Technologies US, Inc.

HTML Pages converted to PDF Document

This document contain component information from the manufacturer's website which are not available in a revision controlled document from the manufacturer. To facilitate the addition of these parts into the Electronics Database, we are converting the HTML pages related to that part, from the manufacturer's website into Adobe PDF format. The contents of this document is based on the information provided on the manufacturer's website, therefore the information may have been changed by the manufacturer since this was created.

