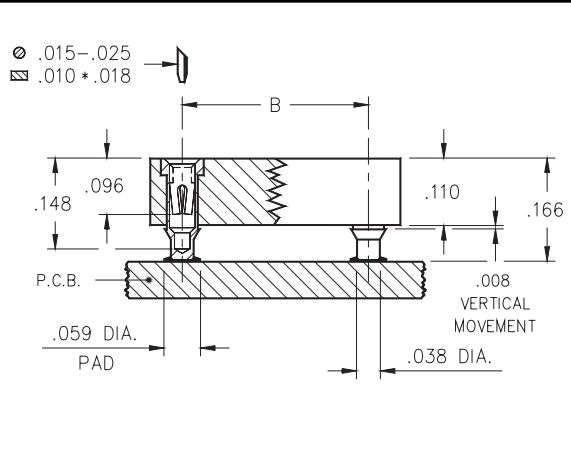




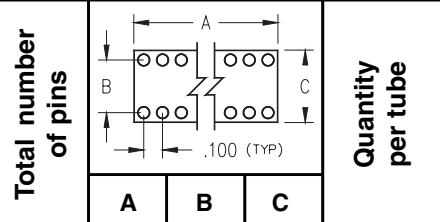
DUAL-IN-LINE SOCKETS

Surface Mount, Stub Tail Open Frame

Series 114



- Unique floating contacts compensate for effects of unevenly dispensed solder paste.
- High temperature insulator can withstand infrared reflow and vapor phase soldering.
- Hi-Rel, 4-finger BeCu #30 clip rated at 3 amps. See page 208 for details.
- Uses Mill-Max #1434 pin. See page 131 for details.



Ordering Information

Total number of pins	Quantity per tube			
	A	B	C	
10	0.5	0.2	0.3	41
4	0.2	0.3	0.4	100
6	0.3	0.3	0.4	67
8	0.4	0.3	0.4	50
10	0.5	0.3	0.4	40
14	0.7	0.3	0.4	28
16	0.8	0.3	0.4	25
18	0.9	0.3	0.4	22
20	1.0	0.3	0.4	20
22	1.1	0.3	0.4	18
24	1.2	0.3	0.4	16
28	1.4	0.3	0.4	14
20	1.0	0.4	0.5	20
22	1.1	0.4	0.5	18
24	1.2	0.4	0.5	16
28	1.4	0.4	0.5	14
32	1.6	0.4	0.5	12
24	1.2	0.6	0.7	16
28	1.4	0.6	0.7	14
32	1.6	0.6	0.7	12
36	1.8	0.6	0.7	11
40	2.0	0.6	0.7	10
42	2.1	0.6	0.7	9
48	2.4	0.6	0.7	8
50	2.5	0.6	0.7	8
52	2.6	0.6	0.7	7
50	2.5	0.9	1.0	8
52	2.6	0.9	1.0	7
64	3.2	0.9	1.0	6

114-93-210-41-117				
114-93-304-41-117				
114-93-306-41-117				
114-93-308-41-117				
114-93-310-41-117				
114-93-314-41-117				
114-93-316-41-117				
114-93-318-41-117				
114-93-320-41-117				
114-93-322-41-117				
114-93-324-41-117				
114-93-328-41-117				
114-93-420-41-117				
114-93-422-41-117				
114-93-424-41-117				
114-93-428-41-117				
114-93-432-41-117				
114-93-624-41-117				
114-93-628-41-117				
114-93-632-41-117				
114-93-636-41-117				
114-93-640-41-117				
114-93-642-41-117				
114-93-648-41-117				
114-93-650-41-117				
114-93-652-41-117				
114-93-950-41-117				
114-93-952-41-117				
114-93-964-41-117				
PLATING CODE =			93	
Sleeve (Pin)			200μ" Sn/Pb	
Contact (Clip)			30μ" Au	