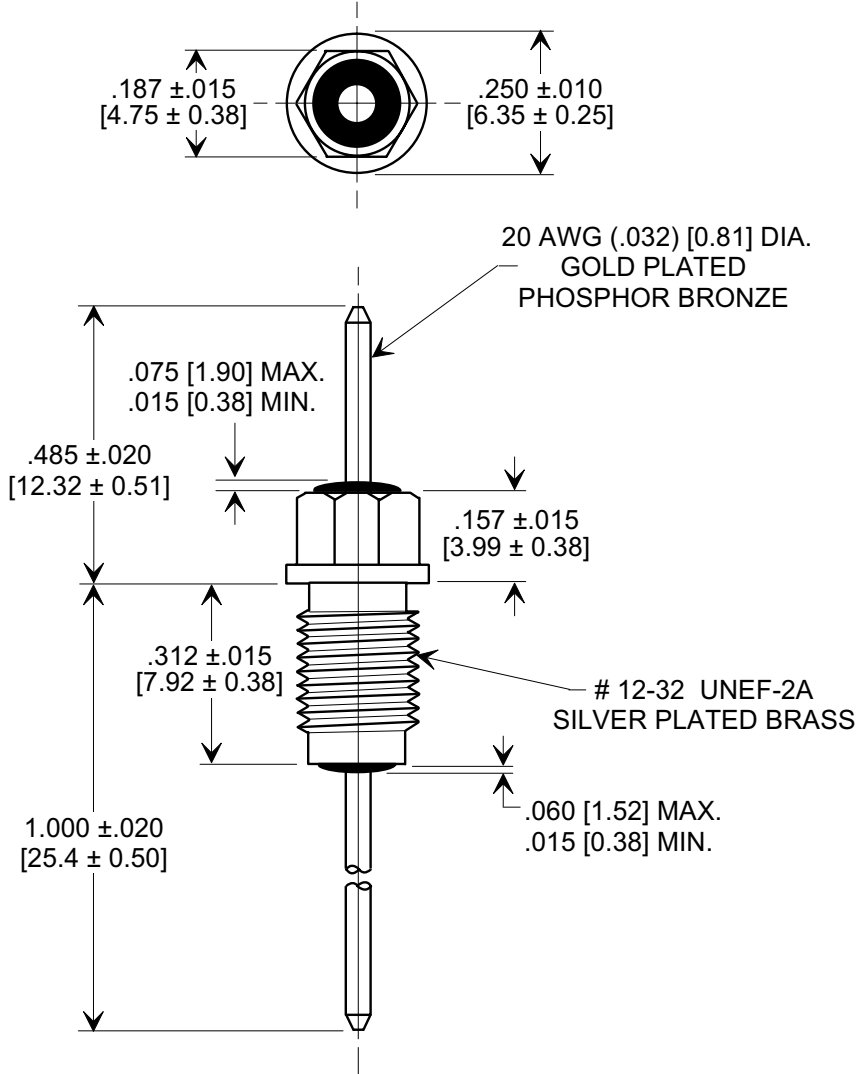
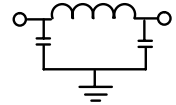
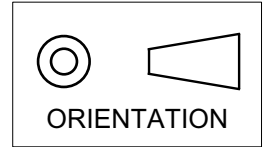


MARKETING SALES DRAWING
DIMENSIONS IN INCHES - DO NOT SCALE THIS DRAWING
DIMENSIONS IN METRIC - []

Electrical Testing
per Tusonix standard
test plans and Mil-Std-202
Test Methods.



NOTES:

- TUSONIX STANDARD PART NUMBER: 4203-017.
TUSONIX RoHS COMPLIANT PART NUMBER: 4203-017 LF.
CUSTOMER MUST SPECIFY STANDARD OR RoHS PART NUMBER WHEN ORDERING.
- LEAD FINISH: GOLD PLATED PHOSPHOR BRONZE.
- PART MARKING: TRADEMARK AND VARIATION NUMBER ON HEX FLATS.
STANDARD PART: BLACK INK. RoHS PART: GREEN INK.
- LEAD TO BE CONCENTRIC TO BUSHING WITHIN .030", [.76] BOTH ENDS.

Cx (pF)	DC WORKING VOLTAGE 85 °C	CURRENT DC	I.R. MIN. @ 100 (VDC.)	DWV (VDC)	MINIMUM NO LOAD INSERTION LOSS @ 25°C (dB) PER MIL-STD-220		
					10 MHz	100 MHz	1 GHz
1500/2500	60	10 A	20 G Ω	900	5	45	70

REVISION RECORD Original Release C.O. 19981202-5-01 DIM'S .060 MAX. .015 MIN. & .075 MAX. .015 MIN ADDED METRIC DIM'S ADDED ORIENTATION SYMBOL ADDED L.E. 05-16-00 20000511-7-04 ADDED NOTES, IR & DWV. S.M. 11-14-05 20051026-5-10	--TOLERANCES-- Unless Otherwise Specified		Title BUSHING STYLE EMI FILTER	
	DECIMAL ±		Drawn S.M. 12-02-98 Scale X 3	
	ANGLES ± .031 [.79]		Approved J.Mc. 12-02-98	
	TUSONIX TUCSON, ARIZONA		A	4203-017

X-2015 Rev-0