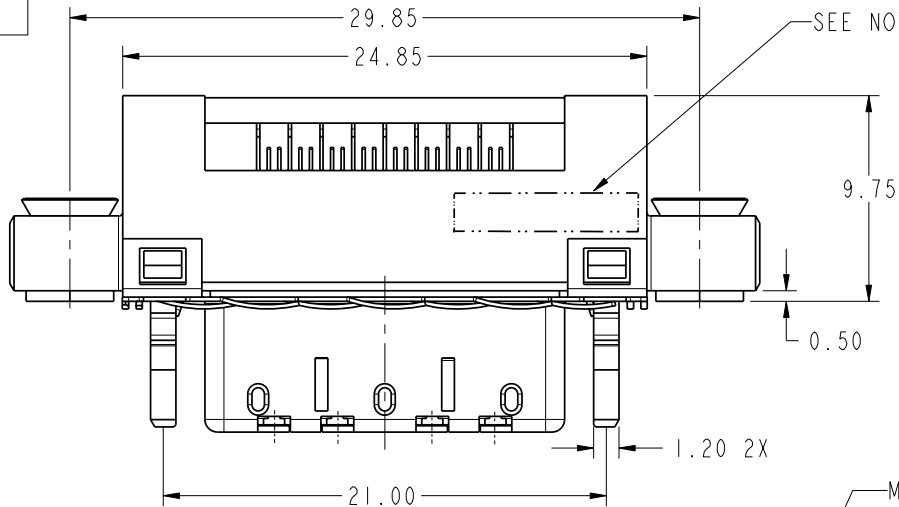


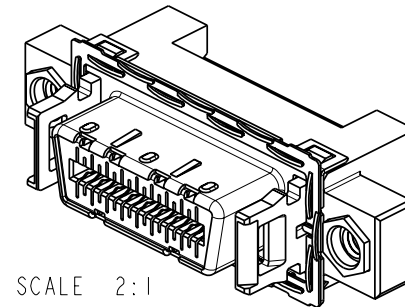


Copyright FCI.

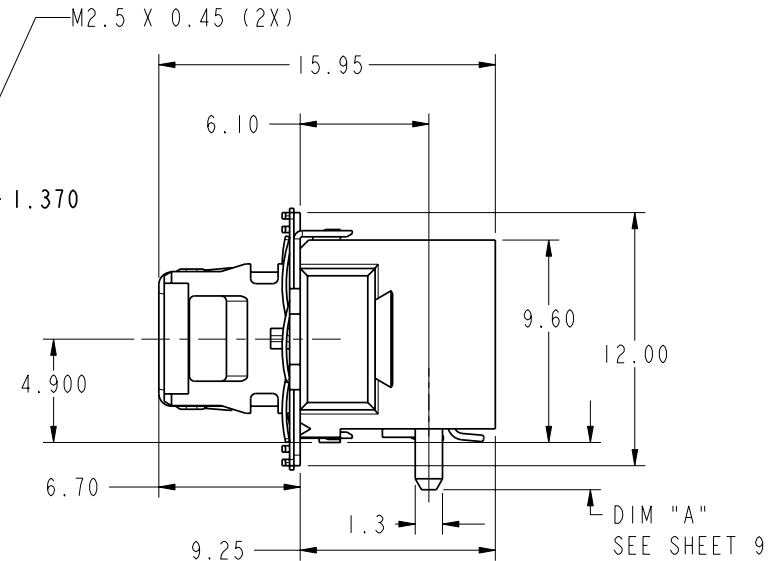
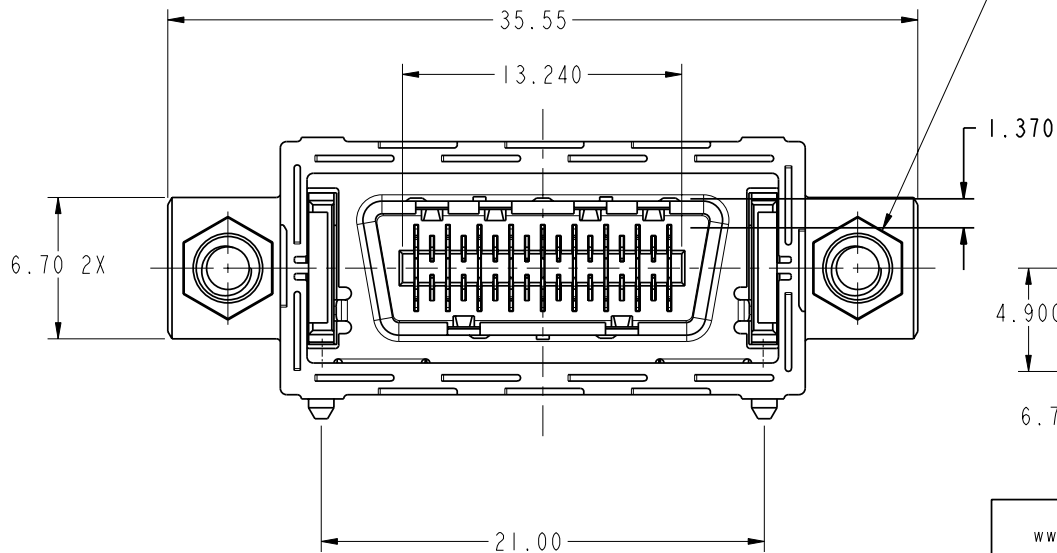
PRODUCT NUMBER
58369-11XXXX






SEE NOTE 3 & 10



SCALE 2:1



rev	ecn no	dr	date
D	V21720	GIP	2002-11-04
E	V21864	DF	2002-12-12
F	V03-0087	GIP	2003-03-14
G	V03-0430	DAI	2004-06-07
H	V05-0063	TAB	2005-02-14
J	106-0123	HVN	2006-07-26
K	107-0024	HVN	2006-02-26

www.fciconnect.com			surface 3.2 / tolerance std ASME Y14.5 ✓ ASME Y14.5 -		projection 	MM 		
			TOLERANCES UNLESS OTHERWISE SPECIFIED					
Dr	R. DRAGGOO	2002-01-07	ANGULAR	LINEAR	0.X	±.30	size A4	Scale 3:1
Eng	S. OLSON	2001-09-11			0.XX	±.10		
Chr	HIRAN V N	2006-02-26			0°. ±2°	0.XXX		
Appr	HIRAN V N	2006-02-26	Product family EyeMax (tm)			ECN 107-0024 Spec ref -		
			title 4X R/A RECPT. ASSEMBLY			dwg no 58369		Rev. K
			w/MOUNTING TABS					
			catalog no -			CUSTOMER		sheet 1 of 9

REV F - 2006-04-17

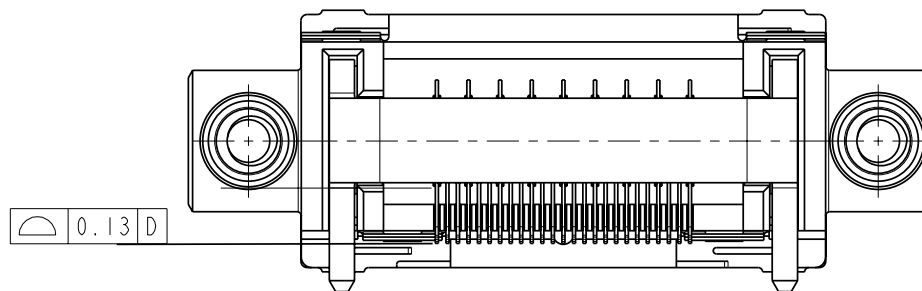
PDM: Rev:K

STATUS: Released

Printed: Jan 28, 2008

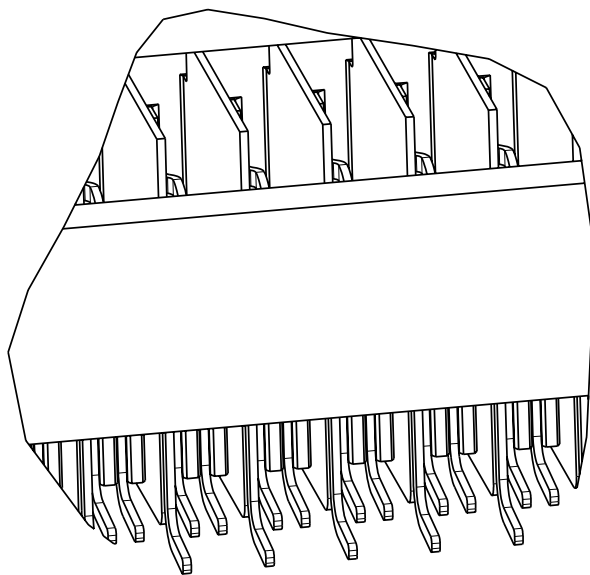


Copyright FCI.

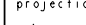




COPLANARITY MEASUREMENT TO BE TAKEN
AT BOTTOM MOST POINT OF CONTACT TAILS

COPLANARITY ZONE IS BELOW DATUM D



SCALE 8:1

www.fciconnect.com			surface 3.2 ASME Y14.5 ✓		tolerance std ASME Y14.5 -		projection 		MM 	
			TOLERANCES UNLESS OTHERWISE SPECIFIED							
Dr	R. DRAGGOO	2002-01-07	ANGULAR LINEAR		0.X ±.30		size A4		Scale 3:1	
Eng	S. OLSON	2001-09-11			0.XX ±.10					
Chr	HIRAN V N	2006-02-26	0° ±2°		0.XXX ±.050		ECN		107-0024	
Appr	HIRAN V N	2006-02-26	Product family EyeMax (tm)					Spec ref		
			title 4X R/A RECPT. ASSEMBLY w/MOUNTING TABS			dwg no 58369			Rev K	
			catalog no -			CUSTOMER			sheet 2 of 9	

REV F - 2006-04-17

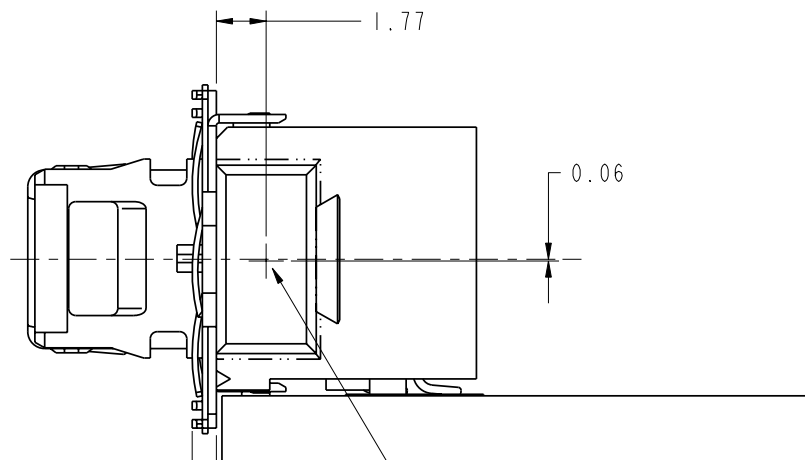
PDM: Rev:K

STATUS: Released

Printed: Jan 28, 2008



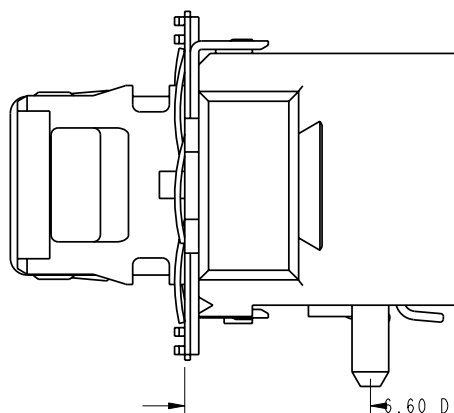
Copyright FCI.



58369 CENTER OF GRAVITY
SEE NOTE 5

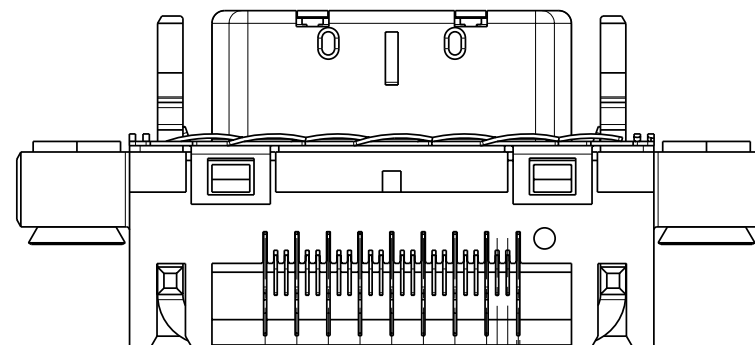
0.20 DISTANCE FROM PCB TO REAR OF "D" SHELL
1.06 DISTANCE FROM PCB TO INSIDE OF BULKHEAD
OR PCI BRACKET. (WITH GASKET IN COMPRESSED STATE)

SIDE VIEW OF CONNECTOR ON PCB



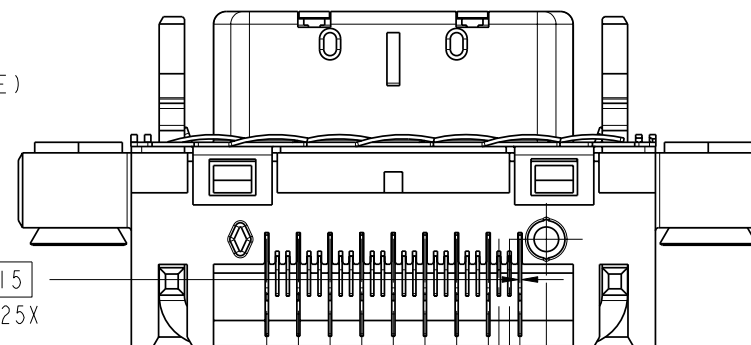
6.60 DISTANCE FROM CENTER OF GROUND PEG
TO INSIDE SURFACE OF BULKHEAD OR PCI BRACKET

SIDE VIEW OF CONNECTOR w/o PCB



SOLDER TAILS 25X

58369-11X0XX (PRODUCT WITHOUT PEGS)



SOLDER TAILS, 25X

58369-11X1XX (PRODUCT WITH PEGS)

www.fciconnect.com			surface 3.2/ ASME Y14.5	tolerance std ASME Y14.5	projection ASME Y14.5	MM
			TOLERANCES UNLESS OTHERWISE SPECIFIED			
Dr	R. DRAGGOO	2002-01-07	ANGULAR	0.X ±.30	size A4	Scale 4:1
Eng	S. OLSON	2001-09-11	LINEAR	0.XX ±.10		
Chr	HIRAN V N	2006-02-26	0° ±2°	0.XXX ±.050	ECN	107-0024
Appr	HIRAN V N	2006-02-26	Product family EyeMax (tm)			Spec ref -
FCI			title 4X R/A RECPT. ASSEMBLY			
			w/MOUNTING TABS			
			catalog no	-	CUSTOMER	sheet 3 of 9
			dwg no	58369	Rev. K	

REV F - 2006-04-17

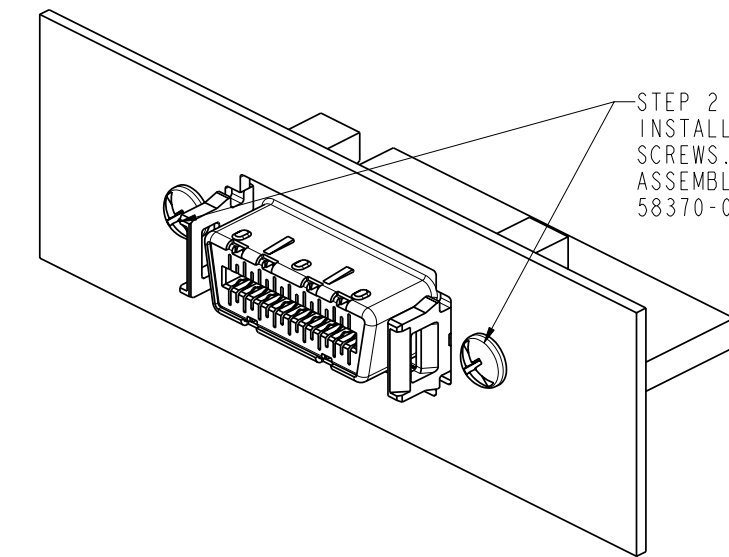
PDM: Rev:K

STATUS: Released

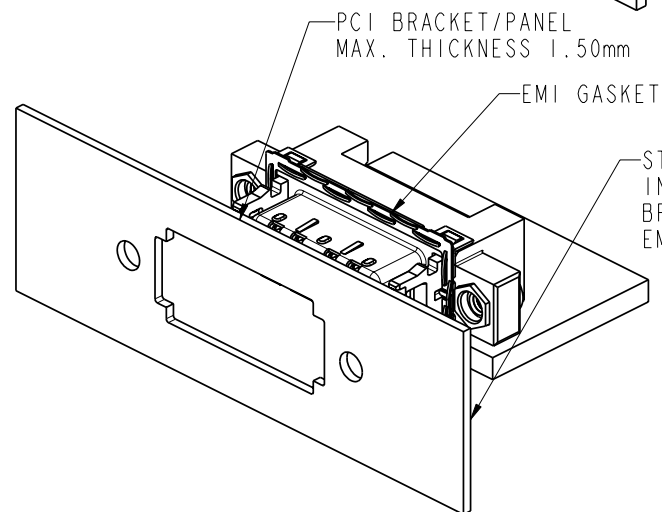
Printed: Jan 28, 2008



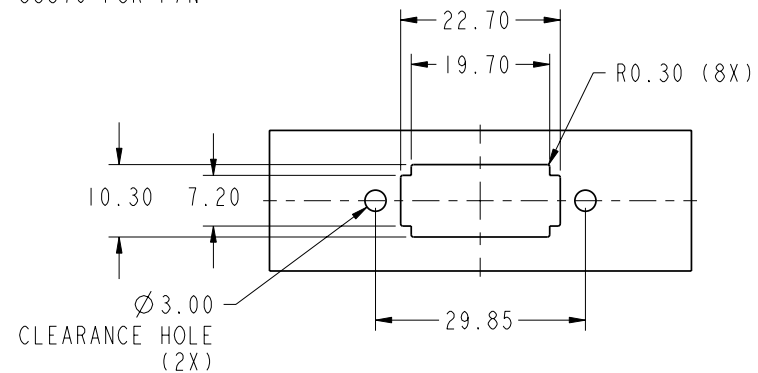
Copyright FCI.



STEP 2
INSTALL TWO M2.5 PANEL MOUNTING
SCREWS. (NOT SUPPLIED WITH CONNECTOR
ASSEMBLY) SEE PRINT 58370 FOR P/N
58370-001

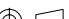




STEP 1
INSERT CONNECTOR INTO PCI
BRACKET/PANEL COMPRESSING
EMI GASKET



SCALE 1:1
PANEL CUTOUT

CONNECTOR APPLICATION TO PCI BRACKET/PANEL

www.fciconnect.com			surface 3.2/ASME Y14.5		tolerance std ASME Y14.5		projection		MM		
			TOLERANCES UNLESS OTHERWISE SPECIFIED								
Dr	R. DRAGGOO	2002-01-07	ANGULAR	LINEAR	0.X ±.30		size A4	Scale 3:2			
Eng	S. OLSON	2001-09-11			0.XX ±.10			3:2			
Chr	HIRAN V N	2006-02-26			0.XXX ±.050			ECN 107-0024			
Appr	HIRAN V N	2006-02-26	Product family EyeMax (tm)					Spec ref -			
			title 4X R/A RECPT. ASSEMBLY					dwg no 58369			Rev. K
			w/MOUNTING TABS					CUSTOMER			sheet 4 of 9
			catalog no -								

REV F - 2006-04-17

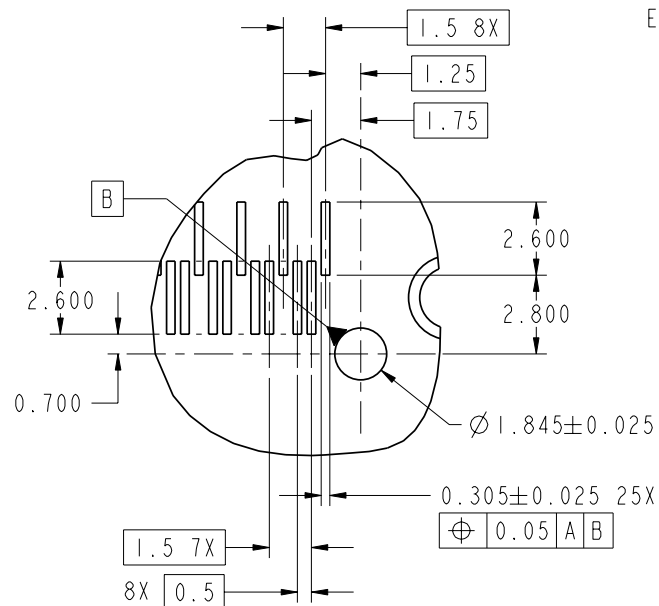
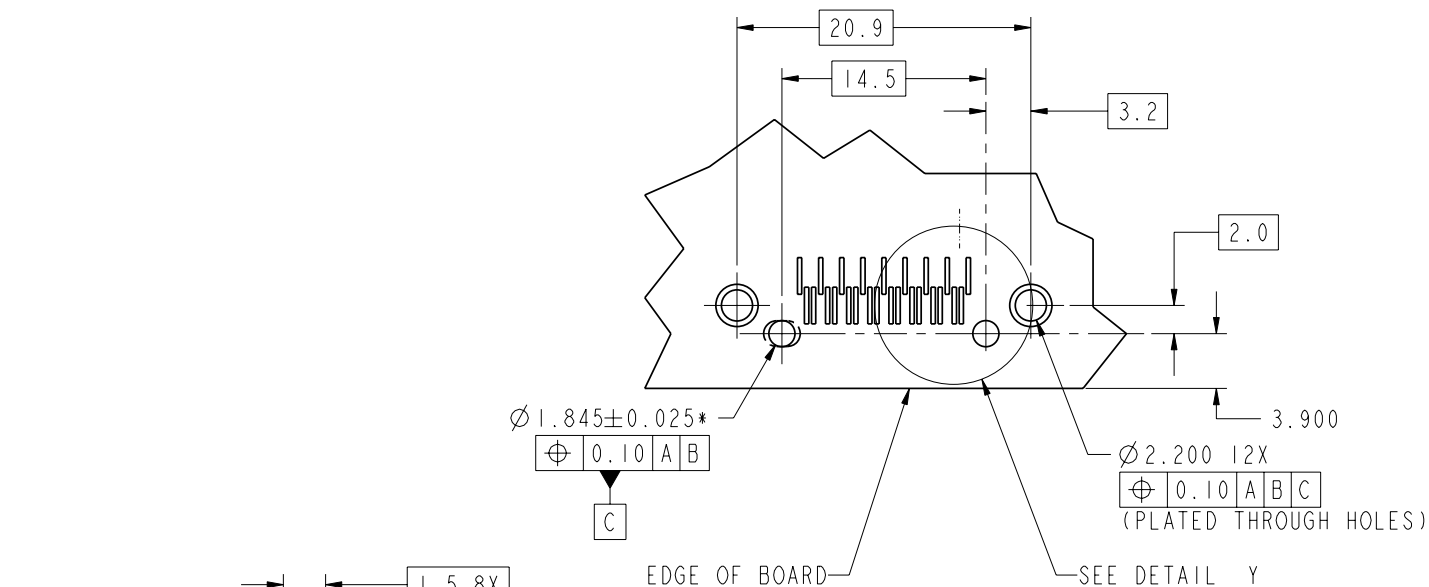
PDM: Rev:K

STATUS: Released

Printed: Jan 28, 2008



Copyright FCI.



DATUM A IS SURFACE OF PCB

THIS PCB LAYOUT IS RECOMMENDED FOR RECEPTACLE ASSEMBLIES THAT HAVE CRUSH/DIAMOND PEGS (58369-11X1XX)
SEE NEXT PAGE FOR RECOMMENDED LAYOUT FOR RECEPTACLE ASSEMBLIES WITHOUT CRUSH/DIAMOND PEGS
*RECEPTACLE CAN ALSO BE PLACED WITH $1.82 \pm 0.05 / +0.0$ BY 2.6 ± 0.05 SLOT AT THIS LOCATION}

www.fciconnect.com			surface 3.2/ ASME Y14.5 ✓	tolerance std ASME Y14.5 -	projection A4	MM
			TOLERANCES UNLESS OTHERWISE SPECIFIED			
Dr	R. DRAGGOO	2002-01-07	ANGULAR	LINEAR	0.X	±.30
Eng	S. OLSON	2001-09-11			0.XX	±.10
Chr	HIRAN V N	2006-02-26	0°	±2°	0.XXX	±.050
Appr	HIRAN V N	2006-02-26	Product family EyeMax (tm)			ECN 107-0024
FCI			title 4X R/A RECPT. ASSEMBLY			Rev. K
			w/MOUNTING TABS			
			catalog no -			
			dwg no 58369			
			CUSTOMER			sheet 5 of 9

REV F - 2006-04-17

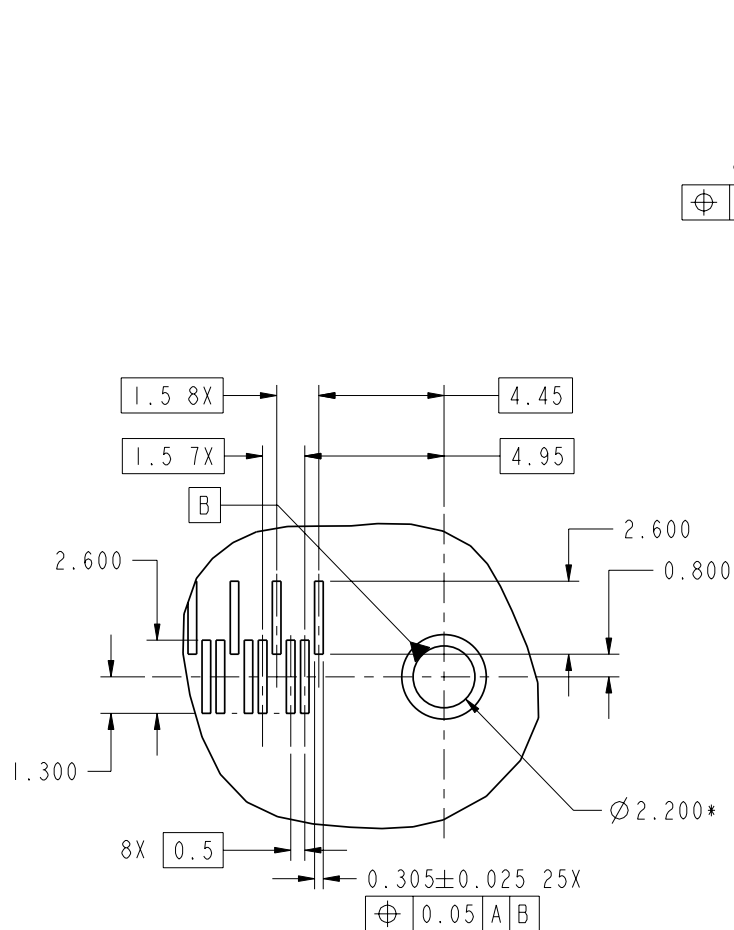
PDM: Rev:K

STATUS: Released

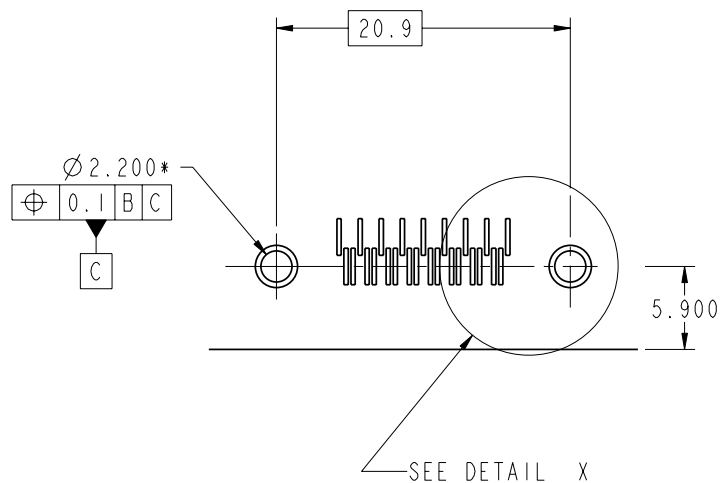
Printed: Jan 28, 2008



Copyright FCI.



DETAIL X
SCALE 4:1



DATUM **A** IS SURFACE OF PCB

THIS PCB LAYOUT IS RECOMMENDED FOR RECEPTACLE ASSEMBLIES
THAT DO NOT HAVE CRUSH/DIAMOND PEGS (58369-11X0XX)
SEE PREVIOUS PAGE FOR RECOMMENDED LAYOUT FOR
RECEPTACLE ASSEMBLIES WITH CRUSH/DIAMOND PEGS
*PLATED THROUGH HOLES

www.fciconnect.com			surface 3.2/ ASME Y14.5 ✓	tolerance std ASME Y14.5 -	projection A4	MM
			TOLERANCES UNLESS OTHERWISE SPECIFIED			
Dr	R. DRAGGOW	2002-01-07	ANGULAR LINEAR	0.X	±.30	size
Eng	S. OLSON	2001-09-11		0.XX	±.10	Scale
Chr	HIRAN V N	2006-02-26		0.XXX	±.050	ECN
Appr	HIRAN V N	2006-02-26	Product family EyeMax (tm)			Spec ref
FCI			title			
			4X R/A RECPT. ASSEMBLY			
			w/MOUNTING TABS			
			catalog no			
			-			
			dwg no			
			58369			
			Rev.			
			K			
			CUSTOMER			
			sheet 6 of 9			

REV F - 2006-04-17

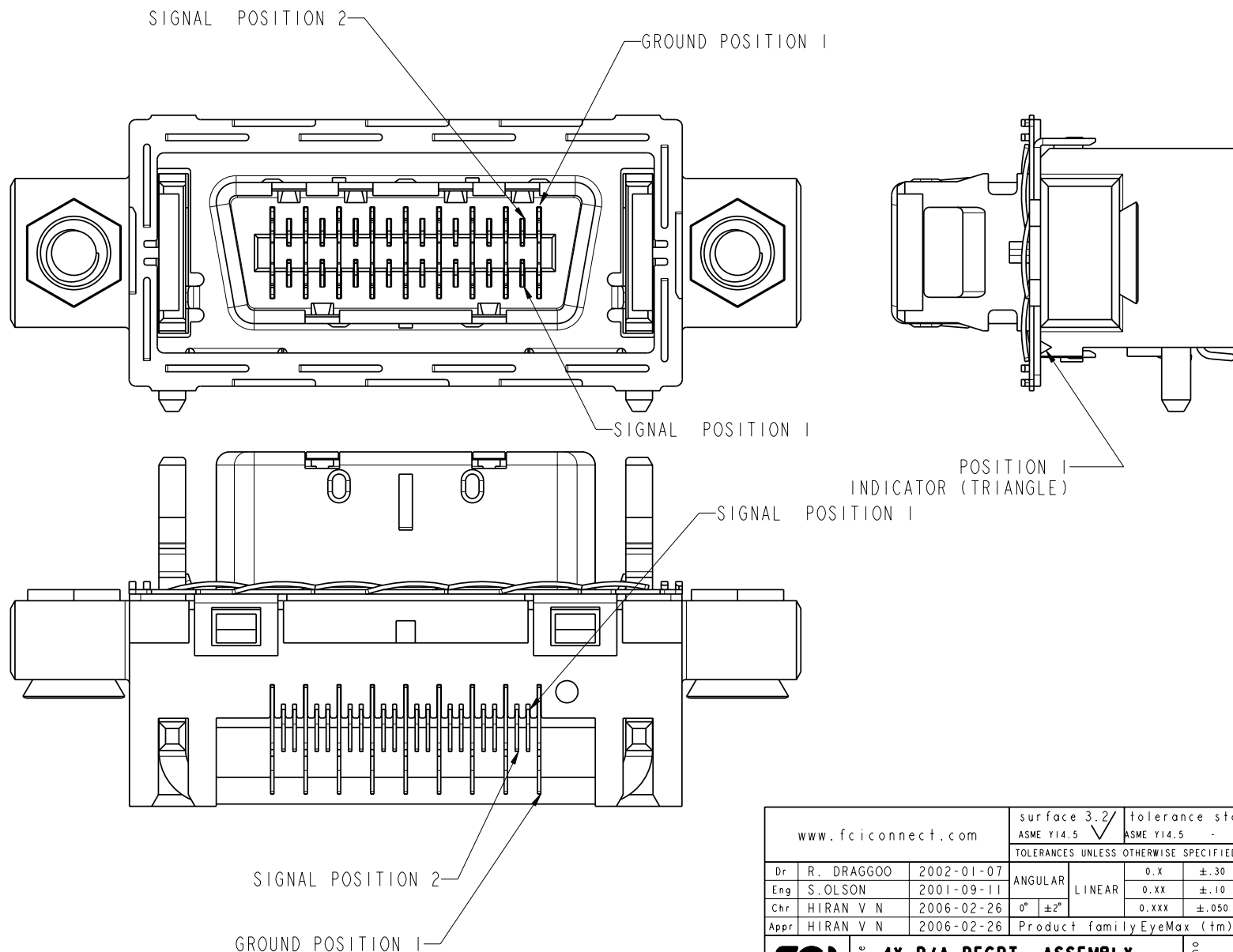
PDM: Rev:K




STATUS:Released

Printed: Jan 28, 2008



Copyright FCI.



www.fciconnect.com			surface 3.2 ASME Y14.5		tolerance std ASME Y14.5		projection 		MM 		
			TOLERANCES UNLESS OTHERWISE SPECIFIED								
Dr	R. DRAGGOO	2002-01-07	ANGULAR	LINEAR	0.X		±.30		size A4	Scale 4:1	
Eng	S. OLSON	2001-09-11			0.XX		±.10				
Chr	HIRAN V N	2006-02-26			0°. ±2°		0.XXX ±.050				
Appr	HIRAN V N	2006-02-26	Product family EyeMax (tm)						ECN 107-0024		
			Spec ref						-		
			title 4X R/A RECPT. ASSEMBLY				dwg no 58369				Rev. K
			w/MOUNTING TABS								
			catalog no -				CUSTOMER				sheet 7 of 9

REV F - 2006-04-17

PDM: Rev:K

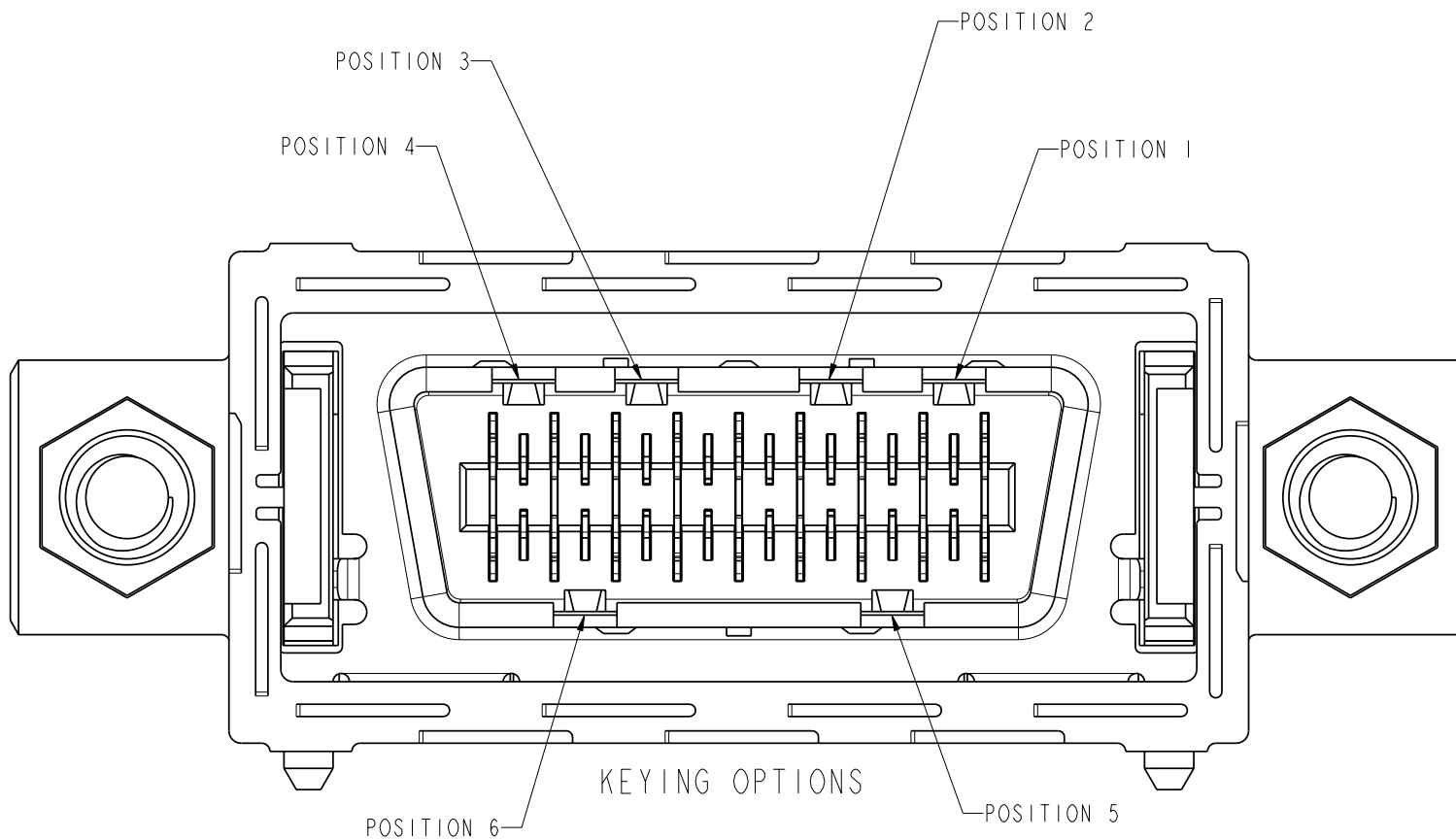
STATUS:Released




Printed: Jan 28, 2008



Copyright FCI.

KEYING POSITIONS						
PART NUMBER	POSITION 1	POSITION 2	POSITION 3	POSITION 4	POSITION 5	POSITION 6
58369-11XXX2		X				X



www.fciconnect.com			surface 3.2 ASME Y14.5		tolerance std ASME Y14.5		projection 		MM 	
TOLERANCES UNLESS OTHERWISE SPECIFIED										
Dr	R. DRAGGOO	2002-01-07	ANGULAR 0° ±2°	LINEAR	0.X ±.30		size A4	Scale 6:1		
Eng	S. OLSON	2001-09-11			0.XX ±.10					
Chr	HIRAN V N	2006-02-26			0.XXX ±.050					
Appr	HIRAN V N	2006-02-26	Product family EyeMax (tm)					ECN 107-0024 Spec ref		
			title 4X R/A RECPT. ASSEMBLY w/MOUNTING TABS				dwg no 58369		Rev. K	
catalog no -			-				CUSTOMER		sheet 8 of 9	

REV F - 2006-04-17

PDM: Rev:K

STATUS: Released

Printed: Jan 28, 2008



Copyright FCI.

58369-11XXXXY

SOLDERTAIL PLATING
BLANK-TIN/LEAD
LF-LEAD FREE (SEE NOTE 2)

KEYING OPTIONS, SEE SHEET 8
0-NONE
2-CUSTOM

PACKAGING
1-TAPE & REEL
2-TRAY

PEGS
0-NO PEGS
1-CRUSH/DIAMOND PEG

PCB THICKNESS
1-1.6mm
2-2.4mm
3-4.0mm

EMI GASKET
1-WITH GASKET

INTERFACE PLATING
1-Au over Ni

PRODUCT NUMBER	BOARD THICKNESS	DIM A
58369-111XXX	1.6mm	2.3
58369-112XXX	2.4mm	3.1
58369-113XXX	4.0mm	4.7

NOTES:

- HOUSING MATERIAL: UL94 V-0 LCP RESIN.
SIGNAL PIN MATERIAL: COPPER ALLOY.
GROUND CONTACT MATERIAL: COPPER ALLOY.
- PLATING: LEAD FREE SOLDER TAILS 2 μ m (80 μ in) MIN MATTE TIN
OVER 1.27 μ m (50 μ in) MIN NICKEL UNDERPLATE.
- P/N AND DATE CODE TO
APPEAR ON THIS SURFACE.
- PRODUCT SPECIFICATION GS-12-209.
- CONNECTOR WEIGHT= 7.06 grams
- APPLICATION SPECIFICATION: GS-20-025
- PACKAGING SPECIFICATION GS-14-794. PACKAGING OF LEAD FREE
PRODUCTS MEETS LABELING AND PACKAGING SPECIFICATION GS-14-920.
- ALL DIMENSIONS ON PCB'S ARE BASIC UNLESS OTHERWISE SPECIFIED
- ALL HOLE DIAMETERS ON PCB'S ARE FINISHED HOLE SIZE
- AREA ON TOP OF CONNECTOR IS FLAT & SMOOTH AND
CAN BE USED FOR VACUUM PICK & PLACE.
- MATES WITH EYEMAX[®] PLUG 58443 (WITHOUT PCB), 58638
(WITH UNEQUALIZED PCB) OR 10026692 (WITH EQUALIZED PCB).
- RECOMMENDED SCREW TORQUE IS 0.15Nm(1.33 in-lbs).
MAX TORQUE -0.20Nm(1.77 in-lbs)
- LEAD FREE PRODUCTS MEET EUROPEAN UNION DIRECTIVES AND
OTHER COUNTRY REGULATIONS AS DESCRIBED IN GS-22-008.
- THE HOUSING WILL WITHSTAND EXPOSURE TO 260°C PEAK TEMPERATURE
FOR 15 SECONDS IN A CONVECTION, INFRARED OR VAPOR PHASE REFLOW
OVEN.

www.fciconnect.com			surface 3.2/ ASME Y14.5		tolerance std ASME Y14.5		projection size A4		MM Scale 13:10	
			TOLERANCES UNLESS OTHERWISE SPECIFIED							
Dr	R. DRAGGOO	2002-01-07	ANGULAR	LINEAR	0.X	±.30				
Eng	S. OLSON	2001-09-11			0.XX	±.10				
Chr	HIRAN V N	2006-02-26	0°	±2°	0.XXX	±.050	ECN 107-0024			
Appr	HIRAN V N	2006-02-26	Product family EyeMax (tm)			Spec ref				
FCI			title 4X R/A RECPT. ASSEMBLY			dwg no 58369			Rev. K	
			w/MOUNTING TABS			CUSTOMER			sheet 9 of 9	
			catalog no							