

PRODUCT NUMBER  
76350-YXX-XXLF

WHEN REQUIRED, ADD SUFFIX LETTER "LF"  
INDICATES THE PRODUCT IS RoHS COMPLIANT  
& COMPATIBLE, SEE NOTE 8  
TOTAL NB OF POSITIONS 04 TO 72

PLATING:

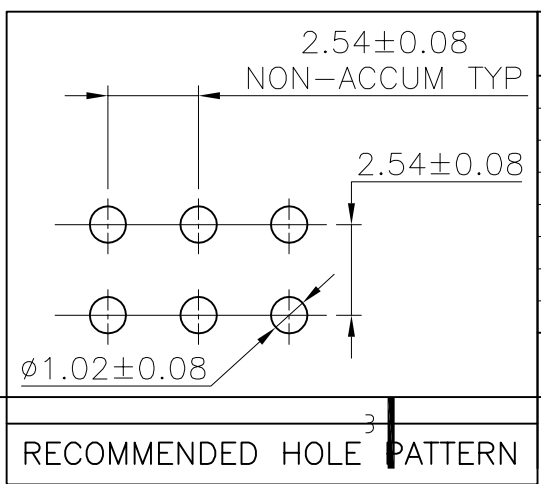
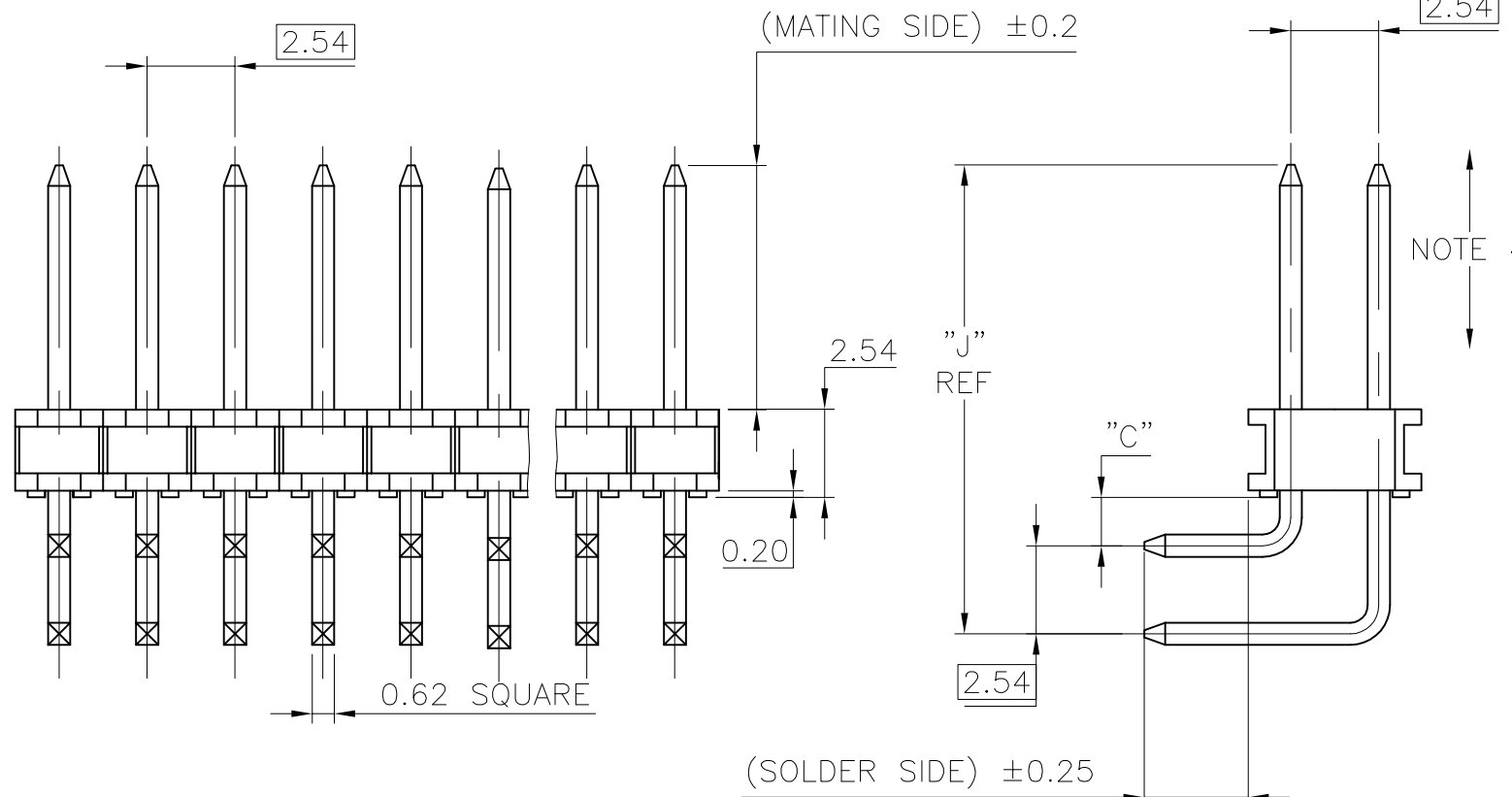
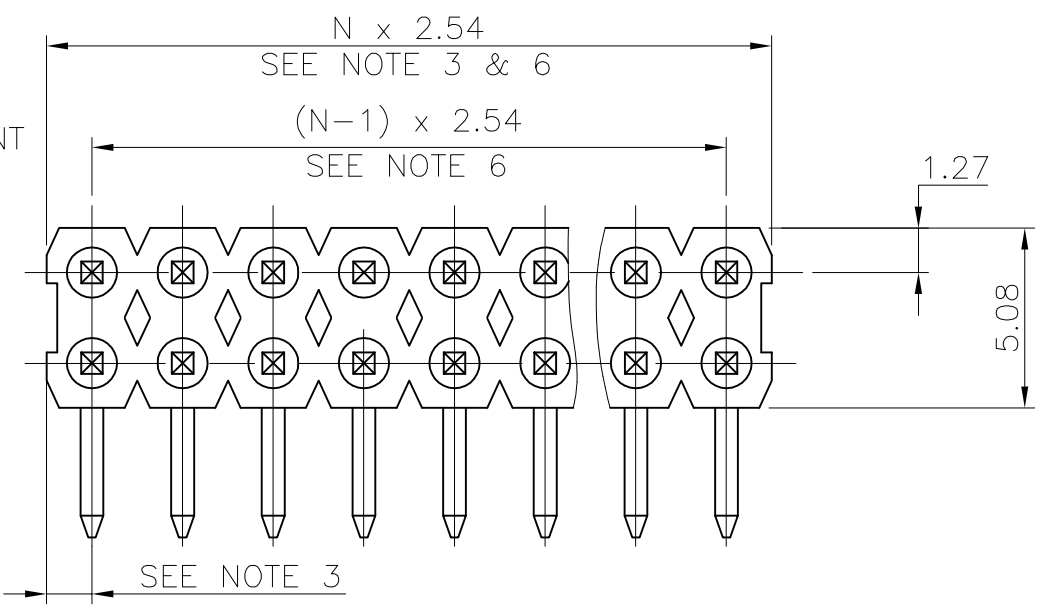
PIN STYLE SEE SHEET 2

- 1 = 0.76µm FULL GOLD/GXT, OVER 1.27µm Ni MIN
- 3 = 3.81µm FULL TIN/LEAD OVER 1.27µm Ni MIN.  
WHEN "LF" IS REQUIRED, 2µm MATTE TIN OVER  
1.27µm MIN NICKEL IS PROVIDED INSTEAD OF TIN-LEAD
- 8 = 0.38µm FULL GOLD/GXT, OVER 1.27µm Ni MIN

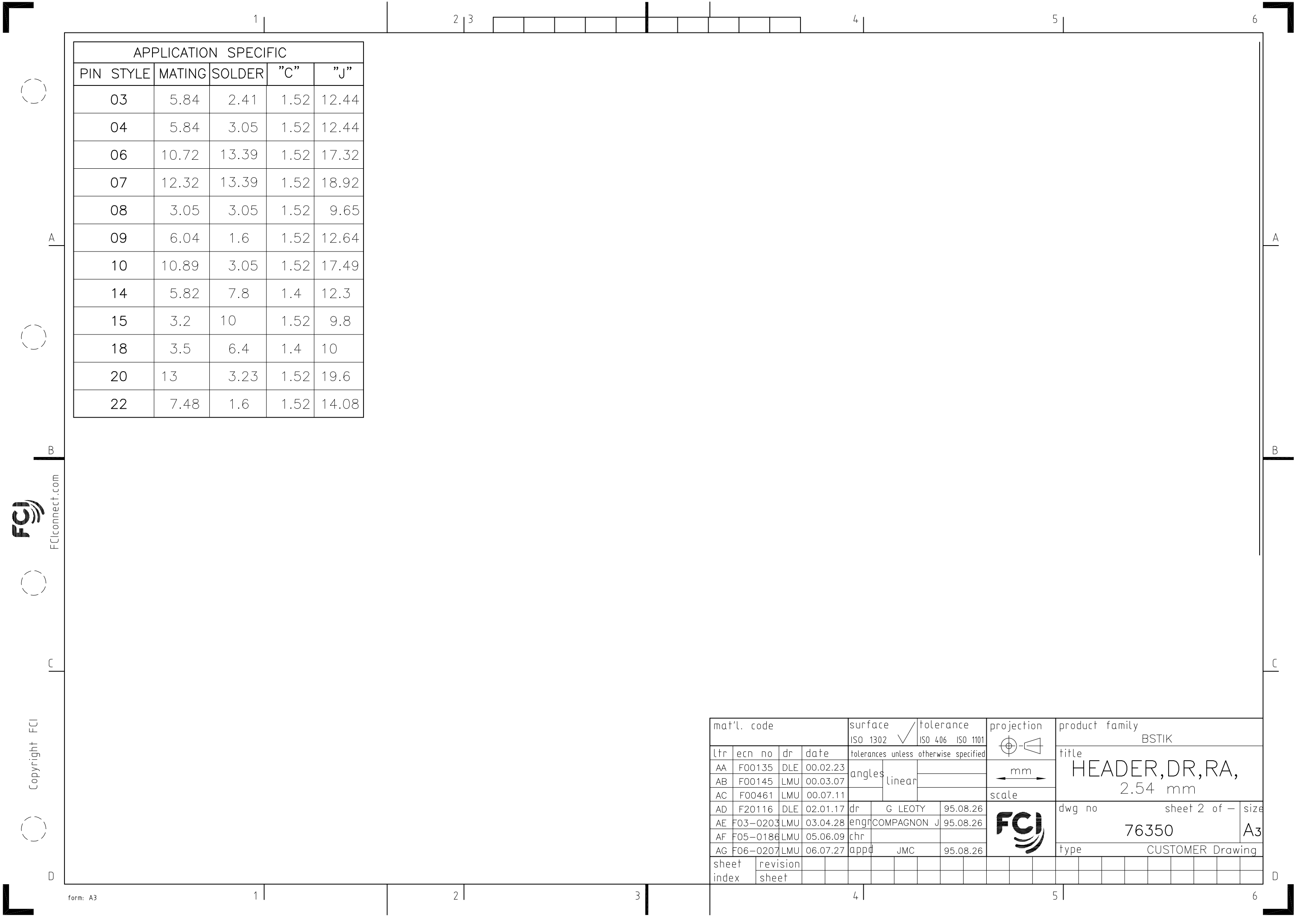
NOTES:

- HOUSING MAT'L : HIGH TEMPERATURE THERMOPLASTIC  
FLAME RETARDANT PER UL94-V0, COLOR BLACK.
- PIN MATERIAL : PHOSPHOR BRONZE.
- DIM 1.27<sup>+0.03</sup><sub>-0.13</sub> FOR MOULDED SIDE(S)  
ONLY. IF SIDE(S) ARE BROKEN, DIM 1.02  
TO 1.7 MAX APPLIES.
- PIN PUSH OUT FORCE : 12N MIN.
- PRODUCT PACKAGED IN POLY BAGS.
- TO DETERMINE DIMENSIONS :  
N = NUMBER OF POSITIONS  
EXAMPLE : 8 POS N x 2.54 = 20.32mm
- FOR STANDARD SELECTIVE GOLD PLATED  
PRODUCTS, SEE DRAWING 77317.
- RoHS COMPATIBLE PRODUCT SPECIFICATIONS

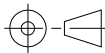

- a - SUFFIX "LF" IS ADDED JUST FOR EASY  
LEADFREE IDENTIFICATION FOR PLATING VERSION 1 & 8.
- b - MANUFACTURING PROCESS COMPATIBILITY
  - THE HOUSING WILL WITHSTAND EXPOSURE TO  
260°C ±5°C SOLDER BATH TEMPERATURE FOR  
5 SECONDS IN A WAVE SOLDER APPLICATION  
WITH A 1.6mm MIN THICK CIRCUIT BOARD.
- c - LABELING:
  - MEETS PACKAGING SPECS AS PER GS-14-920
- d - LEGAL STATEMENT: SEE GS-22-008



mat'l. code SEE NOTES				surface ISO 1302 ✓	tolerance ISO 406 ISO 1101	projection mm	product family BERGSTIK			
ltr	ecn no	dr	date	tolerances unless	otherwise specified		title HEADER RA,DR 2.54mm			
AH	F06-0207	LMU	06.07.27	angles	linear	.X ±0.3				
AJ	F08-0148	JCO	08.05.27			.XX ±0.15				
						.XXX ±0.05	dwg no 76350			
AD	F20116	DLE	02.01.17	dr	G LEOTY	95.08.26				
AE	F20149	DLE	02.02.19	engr	COMPAGNON J	95.08.26				
AF	F03-0203	LMU	03.04.28	chr			sheet 1 of 2 size A3			
AG	F02-0186	LMU	05.06.09	appd	JMC	95.08.26				
sheet index	revision sheet	AJ	AG				type CUSTOMER Drawing			
		1	2							



APPLICATION SPECIFIC					
PIN	STYLE	MATING	SOLDER	"C"	"J"
03		5.84	2.41	1.52	12.44
04		5.84	3.05	1.52	12.44
06		10.72	13.39	1.52	17.32
07		12.32	13.39	1.52	18.92
08		3.05	3.05	1.52	9.65
09		6.04	1.6	1.52	12.64
10		10.89	3.05	1.52	17.49
14		5.82	7.8	1.4	12.3
15		3.2	10	1.52	9.8
18		3.5	6.4	1.4	10
20		13	3.23	1.52	19.6
22		7.48	1.6	1.52	14.08

mat'l. code				surface ISO 1302 ✓		tolerance ISO 406 ISO 1101		projection 		product family BSTIK									
ltr	ecn no	dr	date	tolerances unless		otherwise specified				title HEADER,DR,RA, 2.54 mm									
AA	F00135	DLE	00.02.23	angles															
AB	F00145	LMU	00.03.07	linear															
AC	F00461	LMU	00.07.11					scale		dwg no 76350 sheet 2 of – size A3									
AD	F20116	DLE	02.01.17	dr	G LEOTY		95.08.26												
AE	F03–0203	LMU	03.04.28	engn	COMPAGNON J		95.08.26												
AF	F05–0186	LMU	05.06.09	chr															
AG	F06–0207	LMU	06.07.27	appd	JMC		95.08.26												
sheet index		revision sheet								type CUSTOMER Drawing									