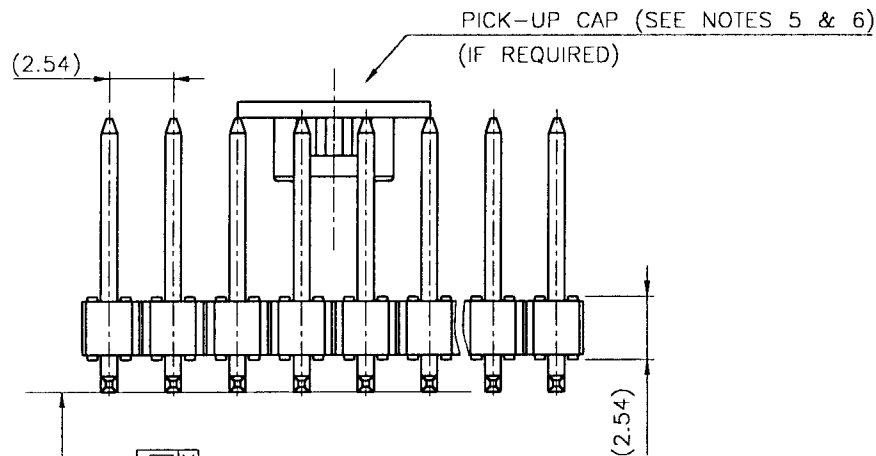
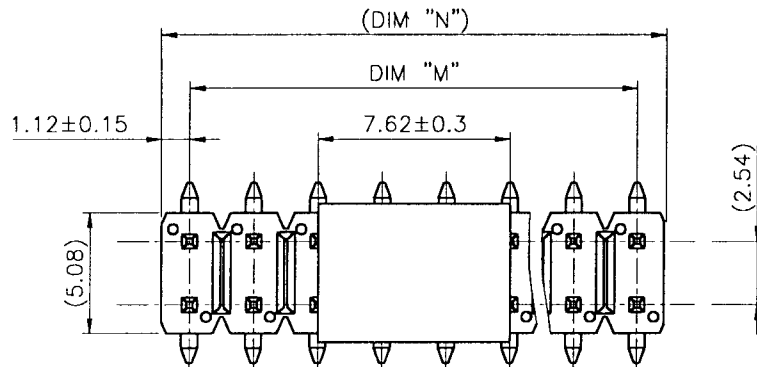


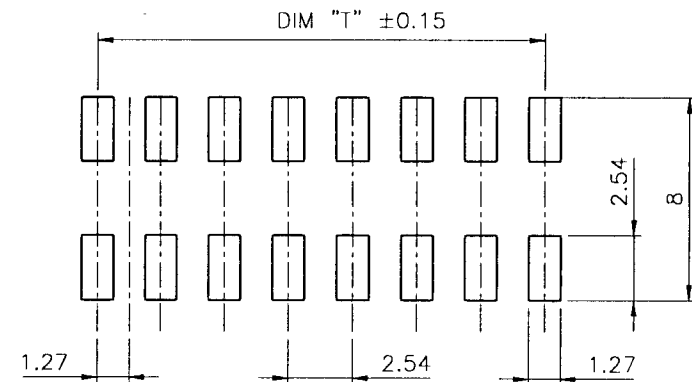
PRODUCT NUMBER

93674-YXX-XX

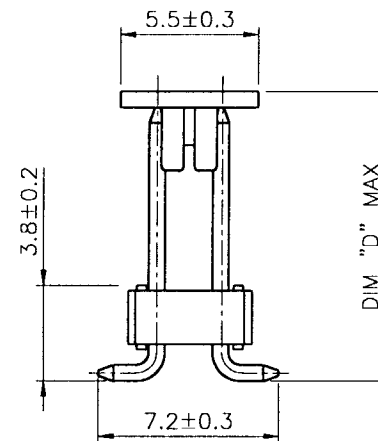
- NB OF POSITIONS (SEE SHEET 2)
- PACKAGING OPTIONS (SEE NOTE 5/6/7/8)
- VERSIONS (SEE SHEET 2)
- PLATING (SEE SHEET 2)
- BASE PART NUMBER




SEE TABLE SHEET 2



RECOMMENDED P.C. BOARD PAD LAYOUT



mat'l code				tolerances unless otherwise specified		CUSTOMER COPY	 ELECTRONICS www.fciconnect.com	title	
lfr	ecn no	dr	date	linear	angles			projection	code
H	F60701	JMC	96.10.09						
J	F70160	JMC	97.03.17						
K	F70410	JMC	97.04.29						
L	F70479	PNZ	97.07.17	dr	COMPAGNON	93.11.29			
M	F70652	JMC	97.10.21	enrg	JMC	96.02.06			
N	F80107	JMC	98.01.14	chr					
P	F90116	DLE	99.01.27	appd	JMC	96.02.06			
sheet index	revision sheet	P	P						
		1	2						

PDM: Rev:R

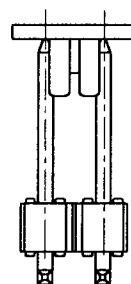
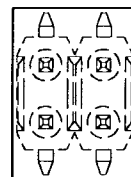
STATUS: Released

Printed: Aug 02, 2002

PRODUCT NUMBER	PRODUCT DIMENSIONS				
	SIZE	DIM"M"	DIM"N"	DIM"T"	COPLANARITY MAX
93674-YXX-04	2x 02	2.54	5.08	2.54	0.10
93674-YXX-06	2x 03	5.08	7.62	5.08	0.10
93674-YXX-08	2x 04	7.62	10.16	7.62	0.10
93674-YXX-10	2x 05	10.16	12.7	10.16	0.10
93674-YXX-12	2x 06	12.7	15.24	12.7	0.10
93674-YXX-14	2x 07	15.24	17.78	15.24	0.10
93674-YXX-16	2x 08	17.78	20.32	17.78	0.10
93674-YXX-18	2x 09	20.32	22.86	20.32	0.10
93674-YXX-20	2x 10	22.86	25.4	22.86	0.10
93674-YXX-22	2x 11	25.4	27.94	25.4	0.10
93674-YXX-24	2x 12	27.94	30.48	27.94	0.10
93674-YXX-26	2x 13	30.48	33.02	30.48	0.10
93674-YXX-28	2x 14	33.02	35.56	33.02	0.12
93674-YXX-30	2x 15	35.56	38.1	35.56	0.12
93674-YXX-32	2x 16	38.1	40.64	38.1	0.14
93674-YXX-34	2x 17	40.64	43.18	40.64	0.14
93674-YXX-36	2x 18	43.18	45.72	43.18	0.15
93674-YXX-38	2x 19	45.72	48.26	45.72	0.15
93674-YXX-40	2x 20	48.26	50.8	48.26	0.18
93674-YXX-42	2x 21	50.8	53.34	50.8	0.22
93674-YXX-44	2x 22	53.34	55.88	53.34	0.24
93674-YXX-46	2x 23	55.88	58.42	55.88	0.26
93674-YXX-48	2x 24	58.42	60.96	58.42	0.28
93674-YXX-50	2x 25	60.96	63.5	60.96	0.30

	DIM"D"	DIM"A"
93674-Y01-XX	10.7	5.9
93674-Y02-XX	12.8	8
93674-Y03-XX	14.7	9.9
93674-Y04-XX	16.2	11.4
93674-Y05-XX	14	9.2


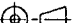

93674-3XX-XX	3.81µm SnPb (FULL PLATED)	
PLATING CODE	CONTACT AREA	REMAINDER
	MINIMUM PLATING THICKNESS OVER 1.27µm Ni	



PICK-UP CAP LOCATION
(ONLY FOR REFERENCE 93674-Y01A04)

NOTES:

- 1 - MATERIAL PIN: COPPER ALLOY.
- 2a- MATERIAL BODY: PCT 30% GLASSFILLED HIGH TEMPERATURE, FLAME RETARDANT PER UL 94V-0 COLOUR BLACK.
- 2b- MATERIAL ADAPTOR: PCT 30% GLASSFILLED HIGH TEMPERATURE, FLAME RETARDANT PER UL 94V-0 COLOUR BLACK.
- 3 - PIN PUSH-OUT FORCE : 9N MIN.
- 4 - SOLDERING RECOMMENDATIONS.
- SOLDER PASTE 62Sn/38Pb.
- SCREENED PASTE THICKNESS 0.25 TO 0.4
- 5 - FOR CONNECTOR WITHOUT OPTION, PACKAGING IN PLASTIC BAGS USED.
- 6 - OPTION LETTER "A" MEANS CONNECTOR WITH CAP AND " TAPE AND REEL" PACKAGING.
- 7 - OPTION LETTER "B" MEANS CONNECTOR WITH CAP AND PACKAGING IN TUBES.
- 8 - OPTION LETTER "T" MEANS CONNECTOR WITHOUT CAP AND PACKAGING IN TUBES.
2X2 SIZE CONNECTOR UNAVAILABLE IN OPTION "T".

mat'l code				tolerances unless otherwise specified			CUSTOMER COPY	 ELECTRONICS www.fciconnect.com	
lir	ecm no	dr	date	linear		projection 	title HEADER DR, SURFACE MOUNT		
H	F60701	JMC	96.10.09						
J	F70160	JMC	97.03.17						
K	F70410	JMC	97.04.29	angles			product family HEADER		
L	F70479	PNZ	97.07.17	dr	COMPAGNON J			94.04.05	code
M	F70652	JMC	97.10.21	engr	JMC			96.02.06	213
N	F80107	JMC	98.01.14	chr		scale 1:1	size dwg no		
P	F90116	DLE	99.01.27	appd	JMC			96.02.06	93674
sheet index	revision sheet							sheet 2 of -	