



# Series C81/C91 Standard Dual Beam Wire Wrap Edge-Grip Socket

## FEATURES

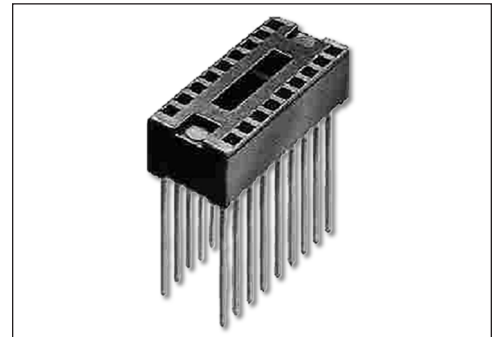
- Dual beam, edge-grip contacts provide high retention with positive wiping action
- Removable cover provides lower profile
- Side-to-side stackable

## GENERAL SPECIFICATIONS

- BODY: black UL 94V-0 glass-filled 4/6 Nylon
- DUAL BEAM CONTACT: Grade A Phosphor Bronze, 1/2-hard
- CONTACT PLATING: (all over 50µ [1.27µ] Ni per SAE-AMS-QQ-N-290); Sn 200µ [5.08µ] min. matte Sn per ASTM B545-97; Sn/Pb 50-150µ [1.27-3.81µ] min. 90/10 Sn/Pb per MIL-P-81728; Au 10µ [0.25µ] min. per MIL-G-45204
- CONTACT CURRENT RATING: 1.5 amp
- CONTACT RESISTANCE: 20 mΩ initial
- INSULATION RESISTANCE: 100 mΩ @ 500 VDC per MIL-STD-1344, method 3003.1
- DIELECTRIC WITHSTANDING VOLTAGE: 1000 VAC
- OPERATING TEMPERATURE: Sn -67°F to 221°F [-55°C to 105°C]; Au -67°F to 257°F [-55°C to 125°C]
- SOLDERABILITY: MIL-STD-202, Method 208, less heat aging
- WITHOUT COVER: accepts leads up to 0.011 x 0.018 ±0.003 [0.28 x 0.46 ±0.08] or 0.021 [0.53] dia.
- WITH COVER: accepts leads 0.100-0.200 [2.54-5.08] long

## MOUNTING CONSIDERATIONS

- SUGGESTED PCB HOLE SIZE: 0.046 ±0.002 [1.17 ±0.05] dia.

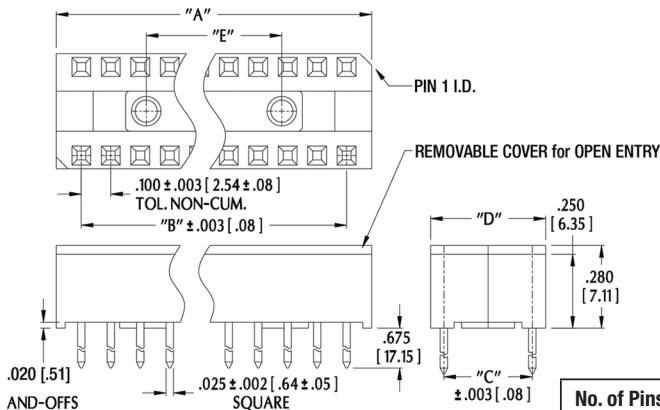


**CUSTOMIZATION:** In addition to the standard products shown on this page, Aries specializes in custom design and production. Special materials, platings, sizes, and configurations can be furnished, depending on the quantity. **NOTE:** Aries reserves the right to change product general specifications without notice.

## ORDERING INFORMATION

**C XX XX-XX TL**

- Socket Series
- Pin Plating
  - 91 = Au
  - 81 = Sn
- No. of Pins (see Table)
- Optional Plating Sn/Pb
  - C81 Series
    - 04 = Closed Entry
    - 54 = Open Entry w/o Cover
  - C91 Series
    - 00 = Closed Entry
    - 50 = Open Entry w/o Cover



ALL DIMENSIONS: INCHES [MILLIMETERS]

ALL TOLERANCES: ±0.005 [0.13] UNLESS OTHERWISE SPECIFIED

No. of Pins	Dim "A"	Dim. "B"	Dim. "C"	Dim. "D"	Dim. "E"
8	0.465 [11.81]	0.300 [7.62]	0.300 [7.62]	0.400 [10.16]	N/A
14	0.765 [19.43]	0.600 [15.24]	0.300 [7.62]	0.400 [10.16]	0.300 [7.62]
16	0.865 [21.97]	0.700 [17.78]	0.300 [7.62]	0.400 [10.16]	0.400 [10.16]
18	0.965 [24.51]	0.800 [20.32]	0.300 [7.62]	0.400 [10.16]	0.400 [10.16]
20	1.065 [27.05]	0.900 [22.86]	0.300 [7.62]	0.400 [10.16]	0.400 [10.16]
22	1.180 [29.97]	1.000 [25.40]	0.400 [10.16]	0.500 [12.70]	0.500 [12.70]
24	1.280 [32.51]	1.100 [27.94]	0.600 [15.24]	0.700 [17.78]	0.500 [12.70]
28	1.480 [37.59]	1.300 [33.02]	0.600 [15.24]	0.700 [17.78]	0.500 [12.70]
36	1.880 [47.75]	1.700 [43.18]	0.600 [15.24]	0.700 [17.78]	0.800 [20.32]
40	2.080 [52.83]	1.900 [48.26]	0.600 [15.24]	0.700 [17.78]	0.800 [20.32]



Bristol, PA 19007-6810 USA  
 TEL (215) 781-9956 • FAX (215) 781-9845  
 WWW.ARIESELEC.COM • INFO@ARIESELEC.COM

