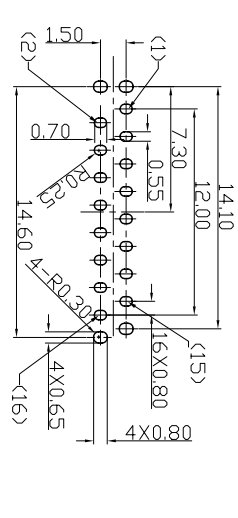
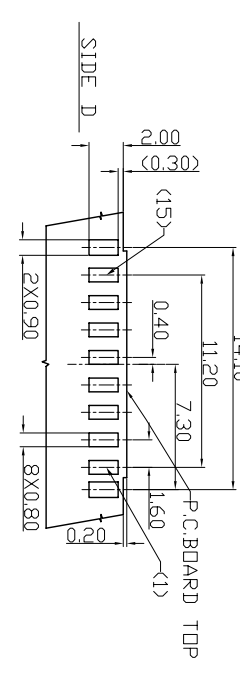
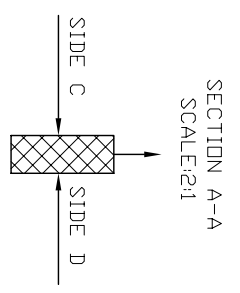
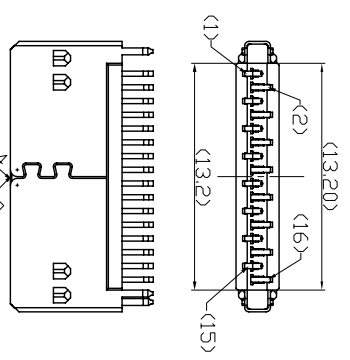
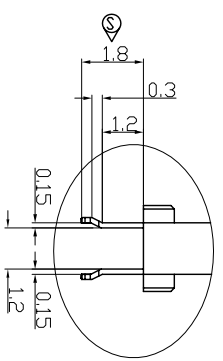
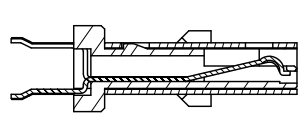
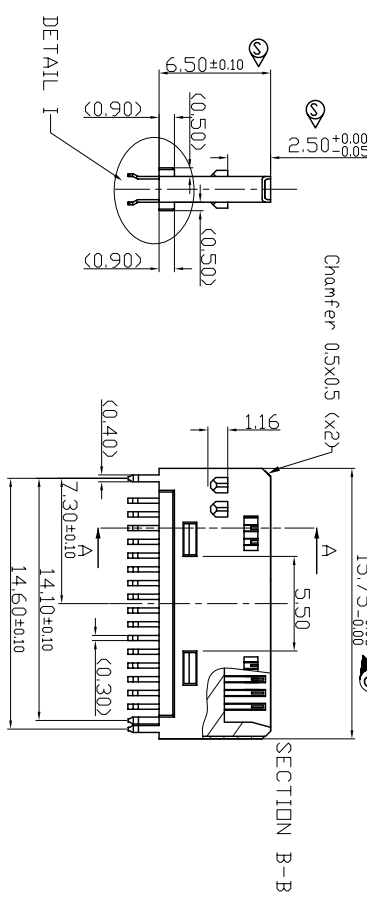
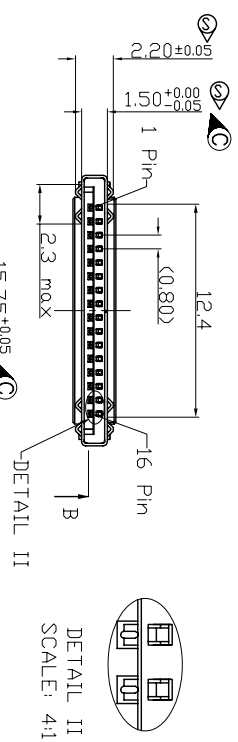


CUSTOMER DRAWING

REVISIONS				
SYM	ECN	DESCRIPTION	DATE	APPROVED
B	HK4385	First release to customer	04/17/07	IP
C	HK4448	Modify the tolerance	06/13/07	IP



- Notes :
- Material:
 - Contact: Alloy copper, t=0.12±0.01
 - Shell: Alloy copper, t=0.15±0.02
 - Housing: High temperature thermoplastic black UL 94V-D
 - Plating :
 - Contact: 0.38um(15u") min gold on mating area
 - 0.03-0.1um(1-4u") gold on tail area
 - 1.5-5um(60-200u") Nickel underplated all over
 - Shell: 1-3um(40-120u") Nickel underplated all over
 - Insertion force: 10N min, removal force: 10N min.
 - Durability: 5K cycles
 - Contact normal force: 40g min/pin
 - SPC Dimension
 - Order number is: MHS-0016-P-201-001



UNLESS OTHERWISE SPECIFIED		APPROVAL		DATE	
TOLERANCES	U.S.	DRAWN	Good Wong	06/13/07	
	METRIC	CHECKED	DB-Gao	06/13/07	

FOR MATERIALS AND FINISHES		DRAWING FILE :	
SEE REMOVE SHARP EDGES		Amphenol	
DIMENSIONS		IO Plug, 16Pin.	
U.S.			
(METRIC)			