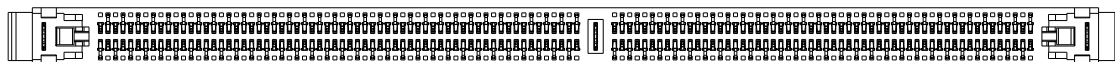
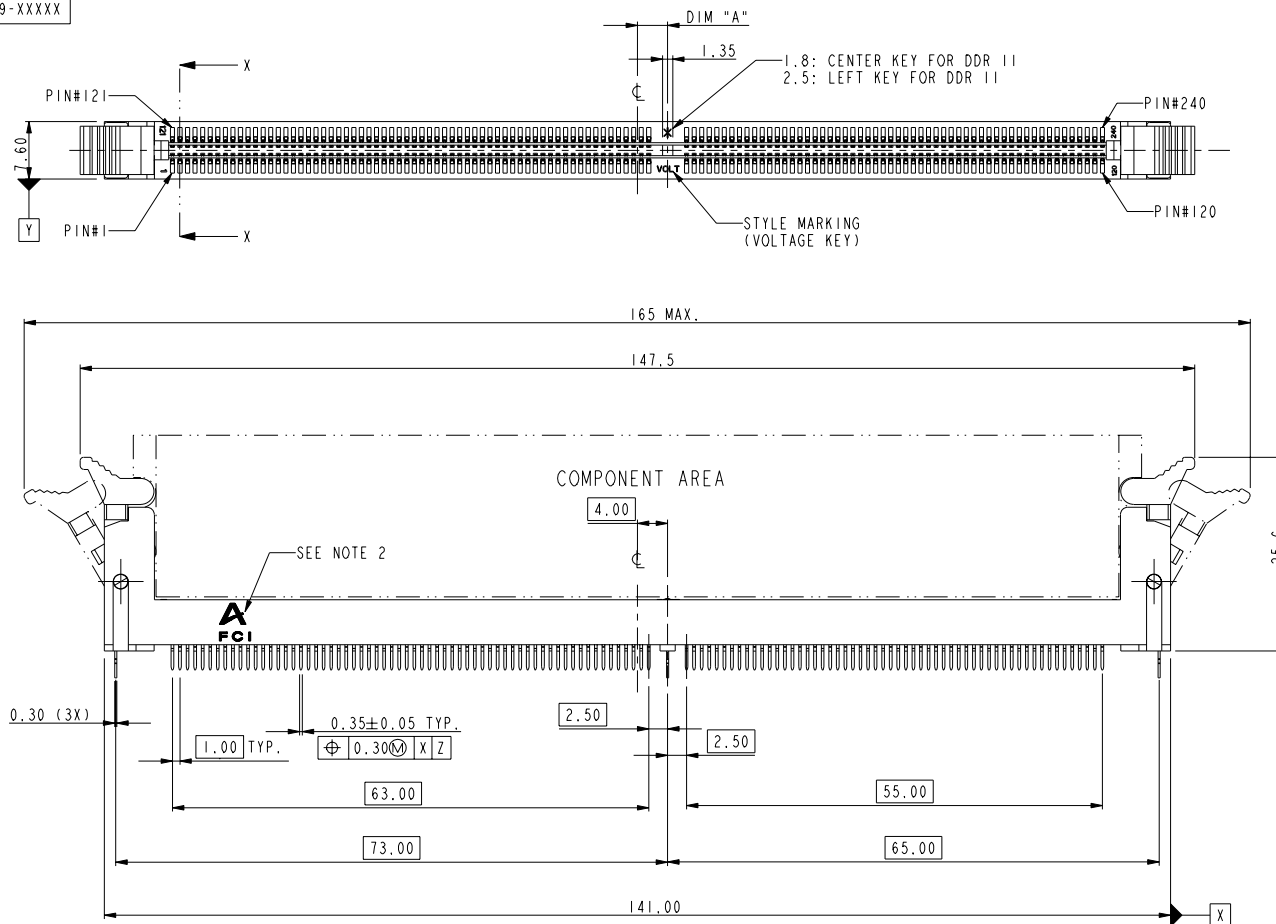
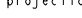




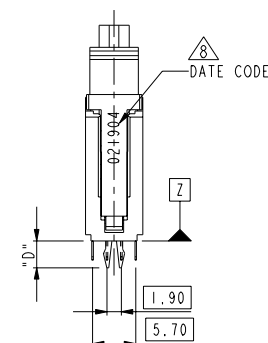
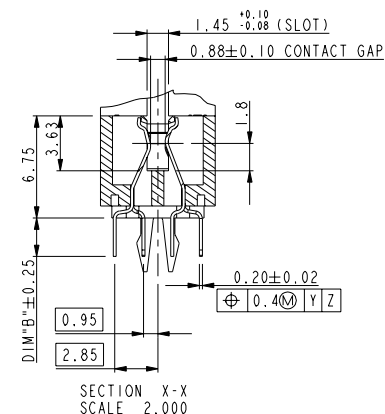
PRODUCT NO.

10005639-XXXXX

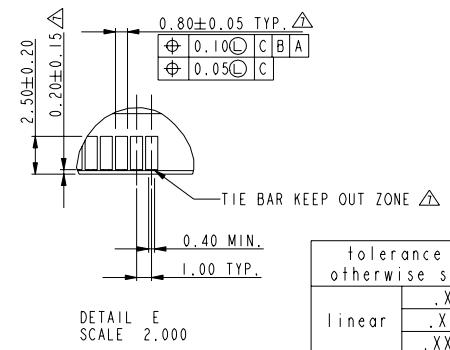
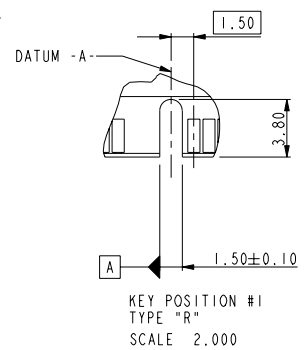
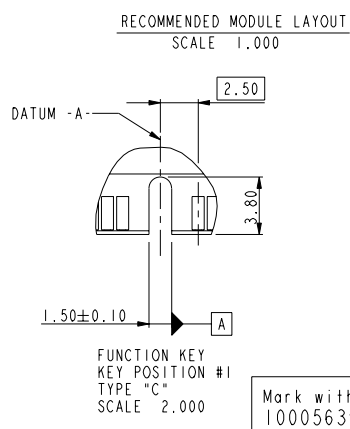
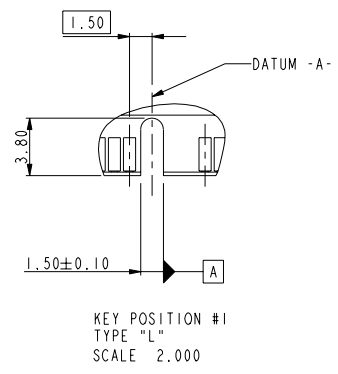
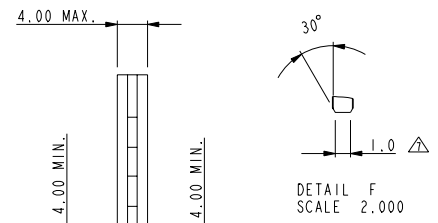
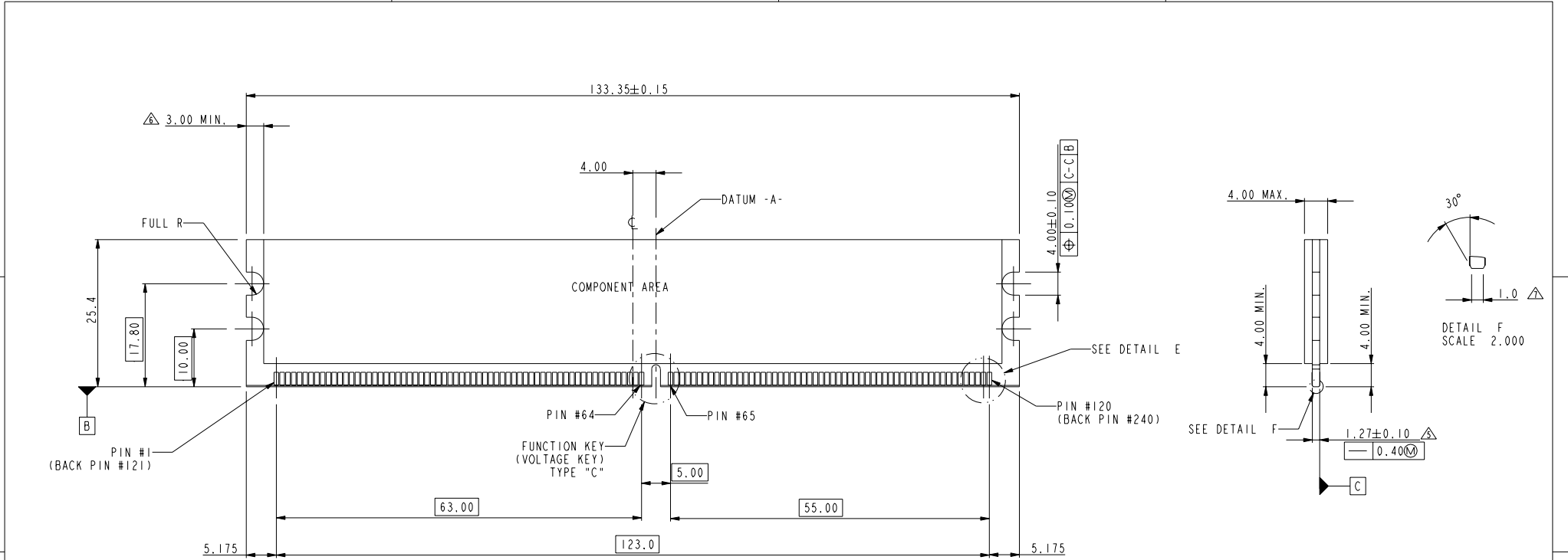


PART NO.	DIM "A"	DESCRIPTION
10005639-1****	4.00	1.8V
10005639-2****	3.00	2.5V
10005639-3****	5.00	X XV

Mark with 10005639-PCB REV. T in area indicated by X.....				Material *			Spec ref *				
				Mat code			✓	tolerance	projection 	MM 	
				Heat treat							
				Plating/Finish							
				Dr	MAGGIE WU		03/21/02			size A4	Scale 0.500
rev	ecn no	dr	date	Eng	JEFF. HSIEH	03/21/02	Product family				
U	DG06-0279	C S	06/07/06	Chr	JEFF. HSIEH	03/21/02	Model Name	10005639	ECN	DG06-0328	
V	DG06-0328	C S	09/08/06	Appr	JENN TSAO	03/21/02	Model Revision	I	REL Level		
-	-	-	-			title DDR II 240P V/T METAL CLIP ASS'Y			dwg no 10005639		Rev. V
-	-	-	-								
-	-	-	-								
-	-	-	-								
-	-	-	-								
Pro/E file				catalog	BDM: Rev V		CUSTOMER DRAWING		sheet 1 of 4		



tolerance unless otherwise specified	
linear	.X $\pm$ .38
	.XX $\pm$ .25
	.XXX $\pm$ .13
angles	0° $\pm$ 2°

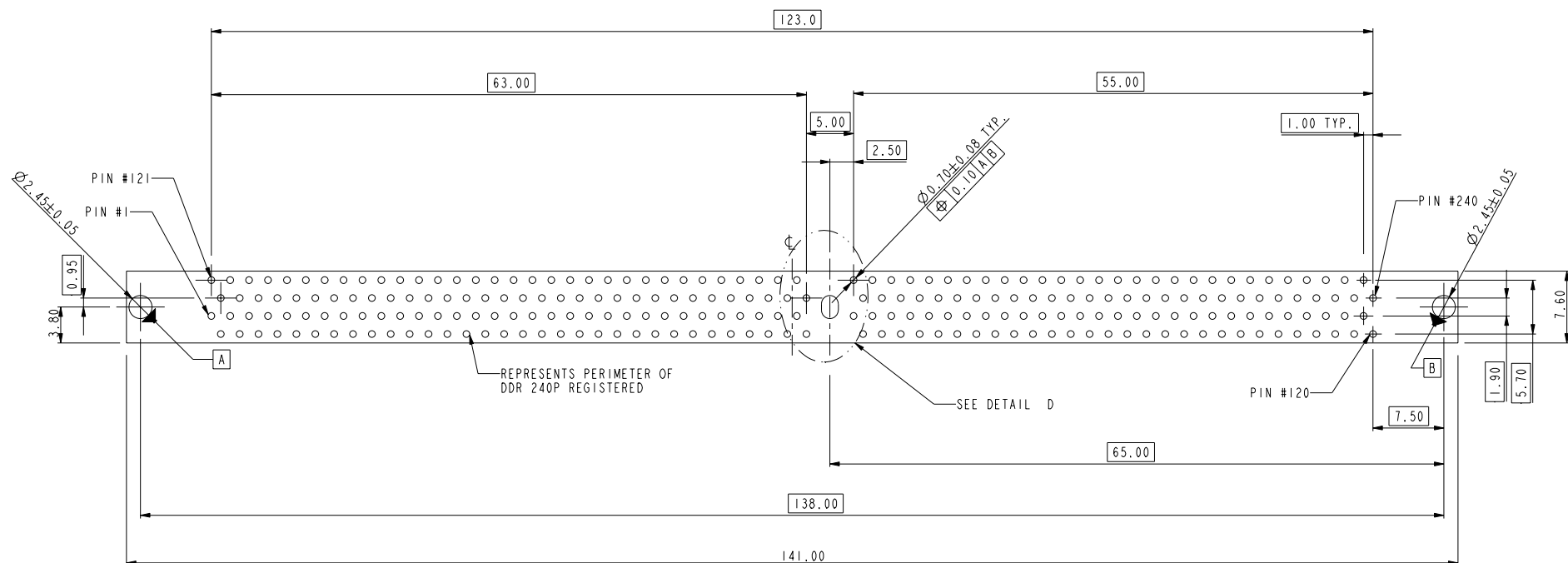


tolerance unless otherwise specified	
linear	.X ± .38
	.XX ± .25
	.XXX ± .13
angles	0° ± 2°

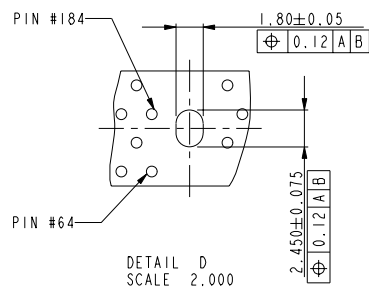
TYPE "R"	X.X VOLTAGE
TYPE "L"	2.5 VOLTAGE
TYPE "C"	1.8 VOLTAGE
SUB KEY POS #1	DESCRIPTION

Mark with 10005639-PCB REV. T in area indicated by X....				Material * Mat code		Spec ref *		tolerance		projection	MM	
				Heat treat		Plating/Finish		size A4		scale 0.500		
rev	ecn no	dr	date	Dr	MAGGIE WU	03/21/02	Product family					
V	-	-	-	Eng	JENN. HSIEH	03/21/02	Model Name		10005639		ECN DG06-0328	
-	-	-	-	Chr	JENN. HSIEH	03/21/02	Model Revision		I		REL Level	
-	-	-	-	Appr	JENN TSAO	03/21/02						
-	-	-	-	FCI		title		DDR II 240P V/T METAL CLIP ASS'Y		dwg no		10005639
-	-	-	-	Pro/E file		catalog		PDM: Rev:V		STATUS: Released		Rev. V
-	-	-	-							CUSTOMER DRAWING		sheet 2 of 4


This document is the property of and embodies CONFIDENTIAL and PROPRIETARY information of FCI. No part of the information shown on this document may be used in any way or disclosed to others without the written consent of FCI. Copyright FCI.



RECOMMENDED CIRCUIT BOARD HOLE LAYOUT



tolerance unless otherwise specified	
linear	.X $\pm$ .38
	.XX $\pm$ .25
	.XXX $\pm$ .13
angles	0° $\pm$ 2°

Mark with 10005639-PCB REV. T in area indicated by X.....				Material *			Spec ref *																
				Mat code			✓		tolerance		projection		MM										
				Heattreat																			
				Plating/Finish																			
				Dr			MAGGIE WU		03/21/03				size		A4		Scale		0.500				
rev				ecn no		dr		date		Eng		JEFF. HSIEH		03/21/03		Product family							
V				-		-		-		Chr		JEFF. HSIEH		03/21/03		Model Name		10005639		ECN		DG06-0328	
-				-		-		-		Appr		JENN TSAO		03/21/03		Model Revision		I		REL Level			
-				-		-		-				title		DDR II 240P V/T METAL CLIP ASS'Y		dwg no		10005639		Rev.		V	
-				-		-		-		Pro/E file		catalog		BDM- Rev:V		STATIC P		CUSTOMER DRAWING		sheet 3 of 4			



2

3

4

10005639 - □ □ □ □ □

## STYLE : MECHANICAL KEYING

1 : 1.8 VOLT. W/ CENTER KEY#1  
2 : 2.5 VOLT. W/ LEFT KEY#1  
3 : X.X VOLT. W/ RIGHT KEY#1

## METAL CLIP

1 : WITH METAL CLIP + DIM "D"=3.05  
2 : WITH METAL CLIP + DIM "D"=3.56  
3 : WITH METAL CLIP + DIM "D"=3.43

## TAIL LENGTH

CODE	DIM "B"
0	2.54
1	2.67
2	3.18
3	4.00

## PLATING

CODE	CONTACT	SOLDERTAIL	UNDERPLATE
1	10u" (0.25um) MIN. GOLD	100u" (2.54um) MIN. TIN/LEAD	50u" (1.27um) MIN. NICKEL OVERALL
2	15u" (0.38um) MIN. GOLD		
3	30u" (0.76um) MIN. GOLD		
4	3u" (0.076um) MIN. GOLD		
6LF	10u" (0.25um) MIN. GOLD	100u" (2.54um) MIN. 100% TIN	50u" (1.27um) MIN. NICKEL OVERALL
7LF	15u" (0.38um) MIN. GOLD		
8LF	30u" (0.76um) MIN. GOLD		
9LF	3u" (0.076um) MIN. GOLD		

## COLOR OF HOUSING AND EJECTOR

0 : BLACK HOUSING + IVORY EJECTOR  
1 : BLUE HOUSING + IVORY EJECTOR  
2 : BLACK HOUSING + BLACK EJECTOR  
3 : PURPLE HOUSING + IVORY EJECTOR  
4 : ORANGE HOUSING + IVORY EJECTOR  
5 : GREEN HOUSING + IVORY EJECTOR  
6 : RED HOUSING + IVORY EJECTOR  
7 : IVORY HOUSING + IVORY EJECTOR  
8 : YELLOW HOUSING + IVORY EJECTOR  
9 : IVORY HOUSING + BLACK EJECTOR

## NOTES:

1. MATERIAL:  
HOUSING: HIGH PERFORMANCE RESINS, GLASS FILLED UL94V-0 RATED.  
EJECTOR: HIGH PERFORMANCE RESINS, GLASS FILLED UL94V-0 RATED.  
TERMINAL: PHOSPHOR BRONZE.  
METAL CLIP: COPPER ALLOY.
2. FCI LOGO TO BE APPROXIMATELY LOCATED AS SHOWN ON PRINT.
3. PRODUCT SPECIFICATION: GS-12-251.
4. PACKAGING SPECIFICATION: GS-14-899.
5. CARD THICKNESS APPLIES ACROSS TABS AND INCLUDES PLATING AND/OR METALIZATION.
6. 3.00 mm MINIMUM APPLIES TO BOTH 4.00 mm WIDE NOTCH LENGTH AND COMPONENT KEEPOUT AREA.
7. LEADING EDGE OF CONTACT PADS SPECIFIED BY THE KEEP OUT ZONE SHALL BE FREE OF BURRS AND EXTERNAL TIE BARS.  
FOR OPTIMUM PERFORMANCE, THE TIE BAR IS TO BE ON AN INTERNAL LAYER SO THAT THE REMNANT CANNOT CAUSE CONTACT DAMAGE.
8. THE DATE CODE IS SHOWN "MM-DD-YY".
9. THIS PRODUCT MEETS EUROPEAN UNION DIRECTIVES AND OTHER COUNTRY REGULATIONS AS DESCRIBED IN GS-22-008.
10. THE HOUSING WILL WITH STAND EXPOSURE TO 260°C PEAK TEMPERATURE FOR 10 SECONDS IN A WAVE SOLDER APPLICATION.

tolerance unless otherwise specified	
linear	.X ± .38
	.XX ± .25
	.XXX ± .13
angles	0° ± 2°

Mark with 10005639-PCB REV. T in area indicated by X.....	Material *		Spec ref *		<div>tolerance</div> <div>projection</div> <div>size A4</div> <div>Scale 0.500</div>			
	Mat code		✓					
	Heattreat							
	Plating/Finish							
rev	ecn no	dr	date	Dr	MAGGIE WU	03/21/02	Product family	
V	-	-	-	Eng	JEFF. HSIEH	03/21/02		
-	-	-	-	Chr	JEFF. HSIEH	03/21/02	Model Name 10005639	
-	-	-	-	Appr	JENN TSAO	03/21/03	Model Revision I	
-	-	-	-				REL Level	
-	-	-	-					
-	-	-	-					
-	-	-	-					
-	-	-	-	Pro/E file	catalog	title DDR II 240P V/T METAL CLIP ASS'Y		
-	-	-	-				dwg no 10005639	
-	-	-	-				Rev. V	