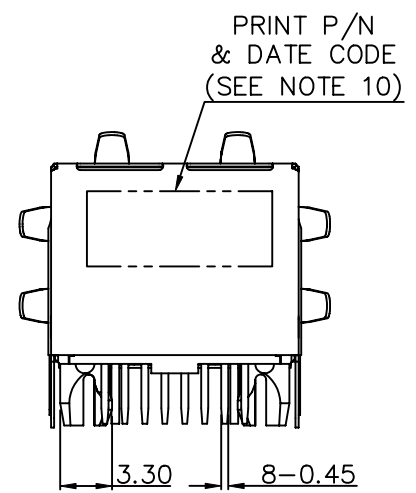
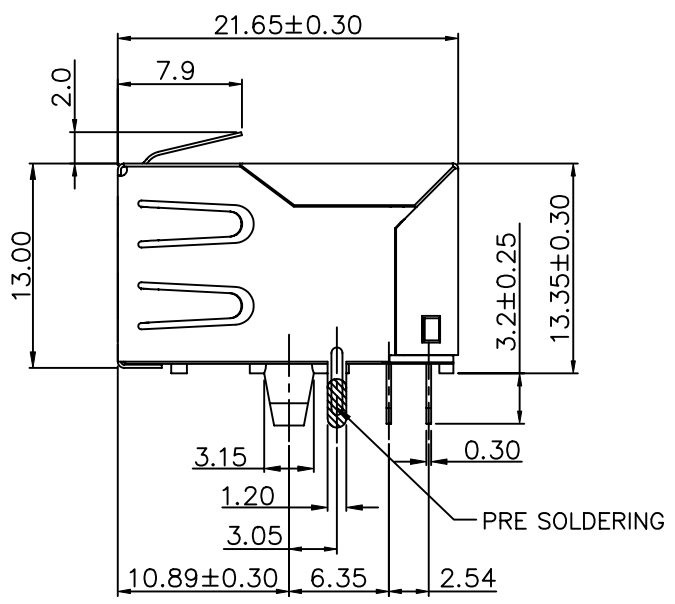
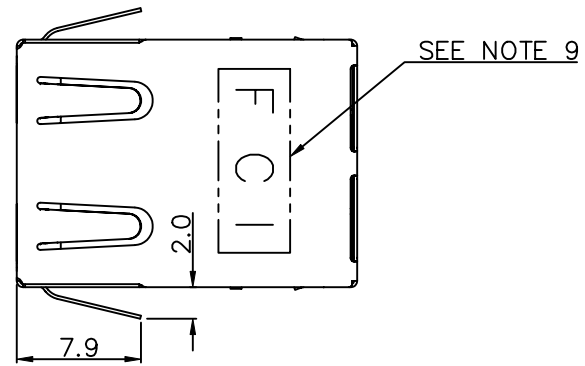
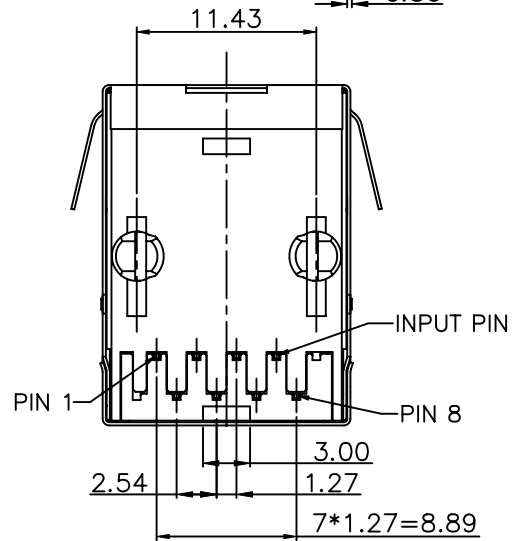
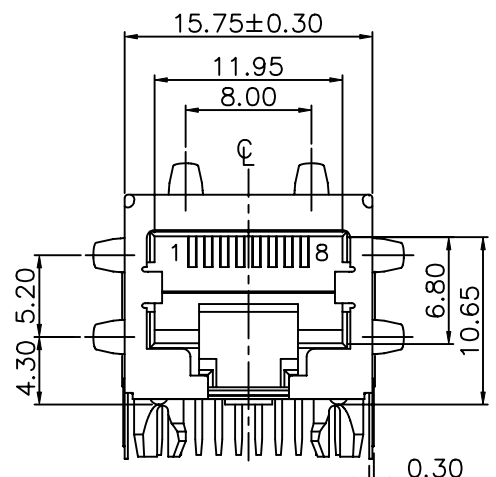


Tous droits strictement reserves. Reproduction ou communication a des tiers
interdite sous quelque forme que ce soit sans autorisation écrite du propriétaire.
Propriete de c FCI. Droits de reproduction FCI.

All rights strictly reserved. Reproduction or issue to third parties in any
form whatever is not permitted without written authority from the proprietor.
Property of Fci. Copyright FCI.



PART NO.
10085058-XXXLF



mat'l. code				tolerances unless otherwise specified		CUSTOMER COPY	FCI	
ltr	ecn no	dr	date	linear	.X ± 0.30	projection	www.fciconnect.com	
A	T08-1034	WL	03/03/08		.XX ± 0.20		title RJ45 1x1 W/SPRING, WITHOUT LED TAB DOWN, TRANSFORMER 10/100	
B	T09-1003	WL	01/15/09		.XXX ± 0.10			
				angles	0° ± 2°	MM	product family size A4	
				dr	WENDY CHEN 12/13/07			
				enrg	WENDY CHEN 12/13/07	scale	code TWN	
				chr	WENDY CHEN 12/13/07			
				appd	ALEX LIANG 12/13/07		sheet 1 of 3	
sheet	revision	B	B	B				
index	sheet	1	2	3				

NOTES:

1. MATERIALS :

SHELL : STAINLESS STEEL, T=0.20mm
HOUSING: HIGH THERMOPLASTIC, UL94V-0
RJ CONTACT : COPPER ALLOY, T=0.3mm
MODULE: HIGH THERMOPLASTIC UL94V-0
INPUT PIN: COPPER ALLOY

2. PLATING :

RJ CONTACT : 50u" MIN. NICKEL UNDER PLATED OVER ALL.
100u" MIN. MATTE TIN ON SOLDERING AREA.
SELECTIVE GOLD PLATED ON CONTACT AREA.

INPUT PIN: TIN COATED COPPER ALLOY.

SHELL : PRE-SOLDERING ON SHELL GROUNDING LEG.

3. MECHANICAL CHARACTERISTICS :

INSERTION FORCE : 22N MAX.

REMOVAL FORCE(WITHOUT PLUG LOCK) : 22N MAX.

DURABILITY : 1000 TIMES

4. OPERATING TEMPERATURE : 0°C ~ 70°C

5. PRODUCT PERFORMANCE PER SPEC. : GS-12-527.

6. PACKING SPEC. : GS-14-1241.

7. THIS PRODUCT MEETS THE EUROPEAN UNION DIRECTIVE AS DESCRIBED IN GS-22-008.

8. THE HOUSING WILL WITHSTAND EXPOSURE TO 265°C PEAK TEMPERATURE FOR 5 SECONDS IN A WAVE SOLDER APPLICATION WITH A CIRCUIT BOARD.

9. "FCI" LOGO IS STAMPED ON THIS AREA.

10. "DATE CODE" DESCRIPTION:

XX XX

WEEK

YEAR (EX.: 08--2008)

11. PART NUMBER DESCRIPTION:

10085058-X X X LF

LED COLOR CODE:

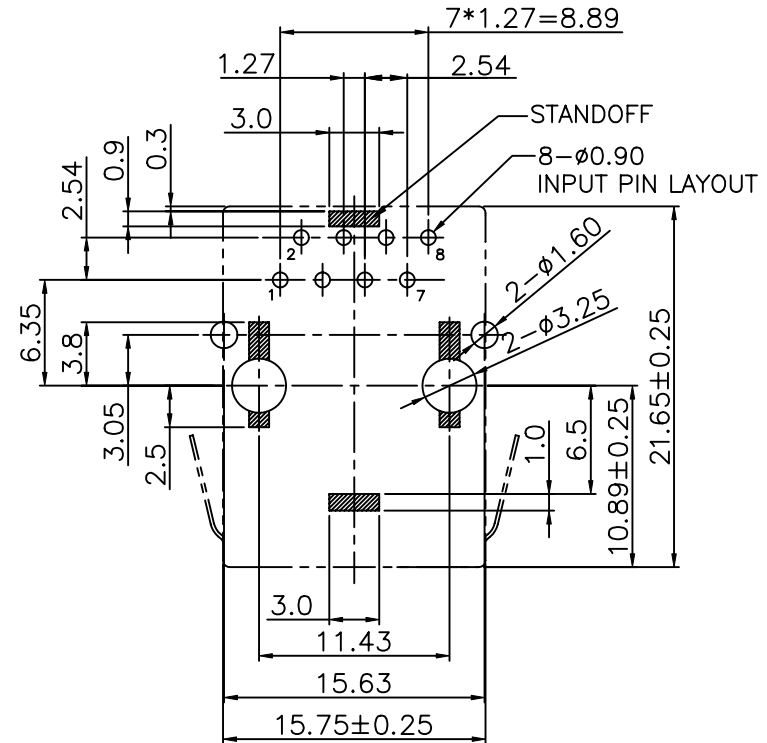
1 : WITHOUT LED

TRANSFORMER SPEED :

0: 10/100 BASE-T

RJ CONTACT AREA PLATING:

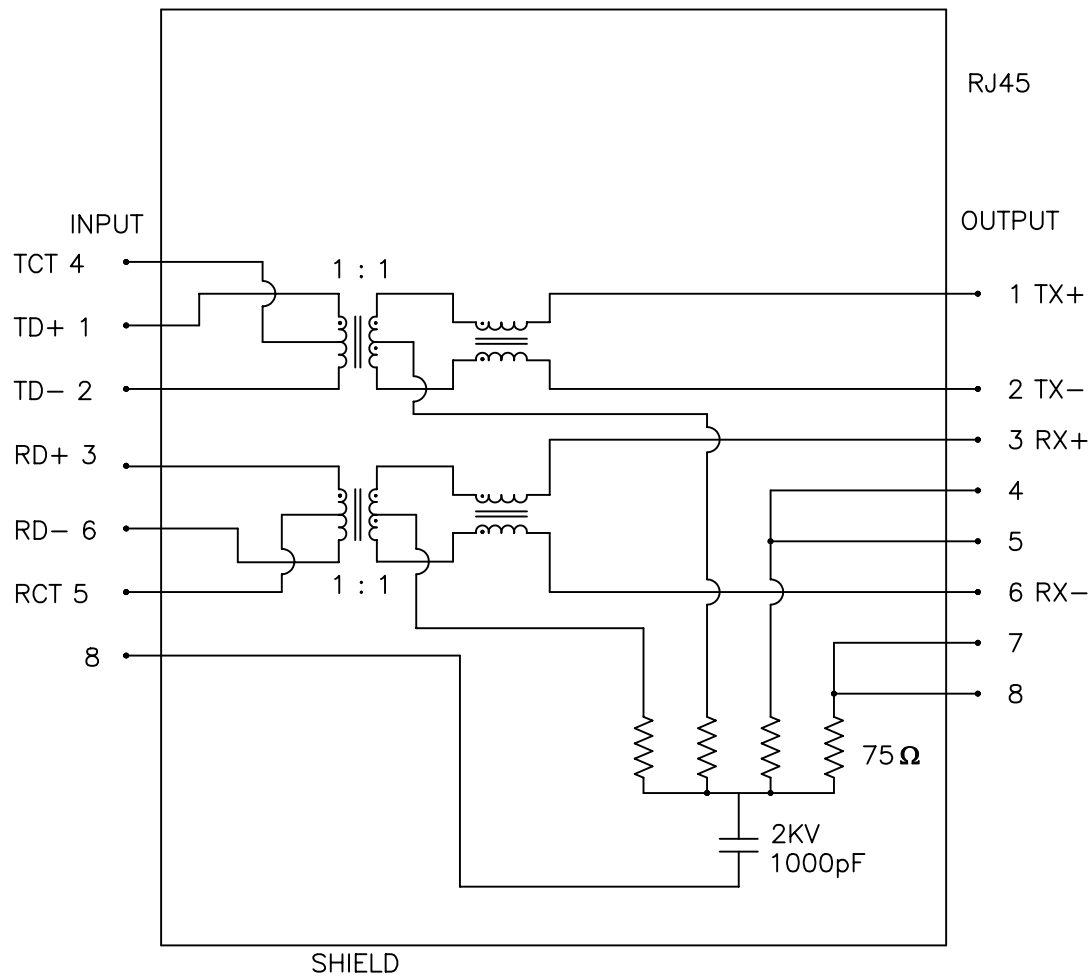
1 : 15u" GOLD



RECOMMENDED PCB LAYOUT (FOR TYPE H) COMPONENT SIDE
ALL DIMENSION TOLERANCE ARE ±0.05mm

mat'l. code				tolerances unless otherwise specified		CUSTOMER COPY		FCI	
ltr	ecn no	dr	date	linear	.X ± 0.30	projection	title	www.fciconnect.com	
B					.XX ± 0.20			RJ45 1x1 W/SPRING, WITHOUT LED	
					.XXX ± 0.10			TAB DOWN, TRANSFORMER 10/100	
				angles	0° ± 2°	MM	product family size dwg no	code	
				dr	WENDY CHEN 12/13/07			TWN	
				enr	WENDY CHEN 12/13/07			sheet	
				chr	WENDY CHEN 12/13/07	scale	A4	10085058	
				appd	ALEX LIANG 12/13/07			2 of	
sheet	revision								
index	sheet								

ELECTRIC SCHEME



Transmitter & Receiver Filter:

1. Insertion Loss (dB MAX)
1~100MHz -1.0
2. Return Loss at 100W(dB MIN)
1~30MHz -18
30~60MHz -16
60~80MHz -12
3. Common Mode Rejection@ 1~100 MHz: -30dB MIN
4. Cross Talk@1~100 MHz: -35dB MIN
5. Inductance@100KHz/ 0.1V, 8mA DC BIAS: 350uH MIN
6. HiPot Test: 1500Vrms(or 2250VDC), 60sec

mat'l. code				tolerances unless otherwise specified		CUSTOMER COPY		FCI	
ltr	ecn no	dr	date	linear	.X ± 0.30	projection		www.fciconnect.com	
B					.XX ± 0.20			title	
					.XXX ± 0.10			RJ45 1x1 W/SPRING, WITHOUT LED	
				angles	0° ±2°	MM		TAB DOWN, TRANSFORMER 10/100	
				dr	WENDY CHEN 12/13/07			product family	
				enrg	WENDY CHEN 12/13/07			code	
				chr	WENDY CHEN 12/13/07	scale	A4	size dwg no	
				appd	ALEX LIANG 12/13/07			10085058	
sheet	revision							TWN	
index	sheet							sheet	
								3 of	