

RIGHT POL BACKPLANE MODULE  
ASSEMBLY PART NUMBER ASSIGNMENT  
348 - X 2 XX - X X X

LOAD  
5 = STANDARD LOAD  
7 = CUSTOM LOAD, LEADED  
8 = CUSTOM LOAD, LEAD FREE  
L = CUSTOM LOAD, LEADED, ADVANCED PLATING  
N = CUSTOM LOAD, LEAD FREE, ADVANCED PLATING

MINIMUM PIN WIPE LENGTH. SEE DETAIL A  
3 = 1.00 mm WIPE (NOT TOOLED)  
4 = 2.00 mm WIPE  
5 = 3.00 mm WIPE

PLATING CODE  
0 = 735 4 = 804  
1 = 732 5 = 803  
2 = 769 6 = 806  
3 = 768 7 = 805

NUMBER OF COLUMNS  
05= 5 COLUMN MODULE  
10= 10 COLUMN MODULE  
25= 25 COLUMN MODULE

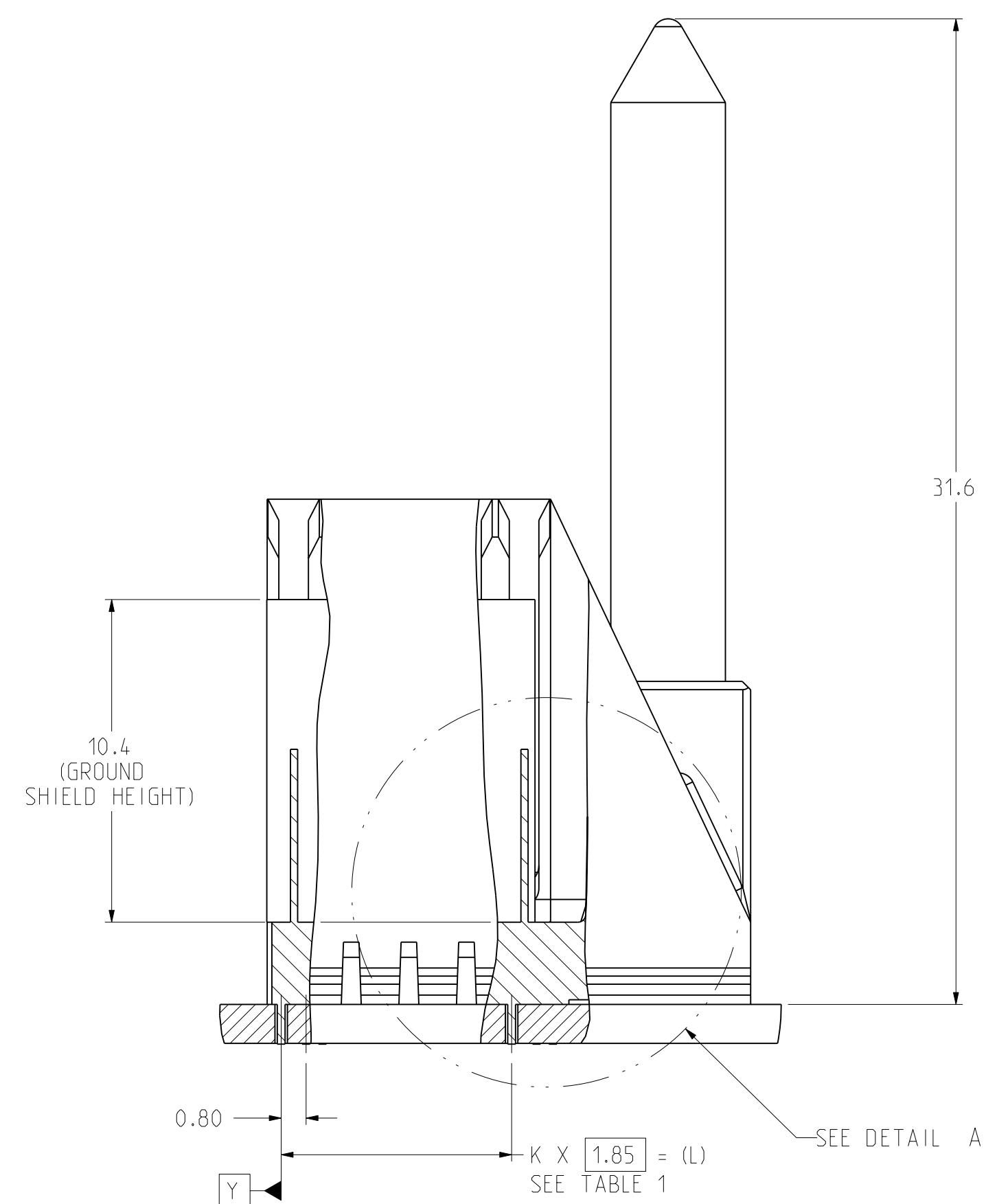
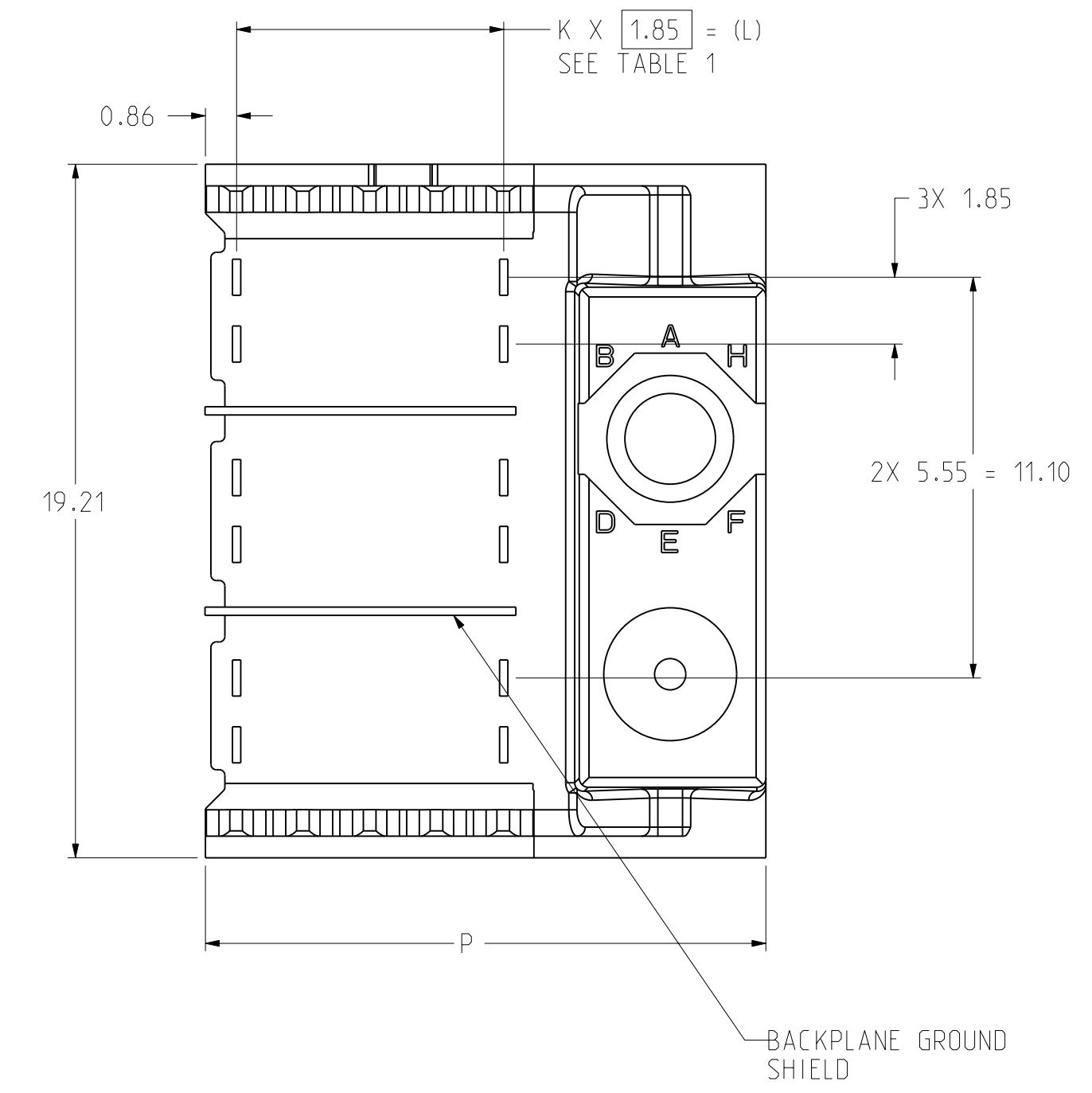
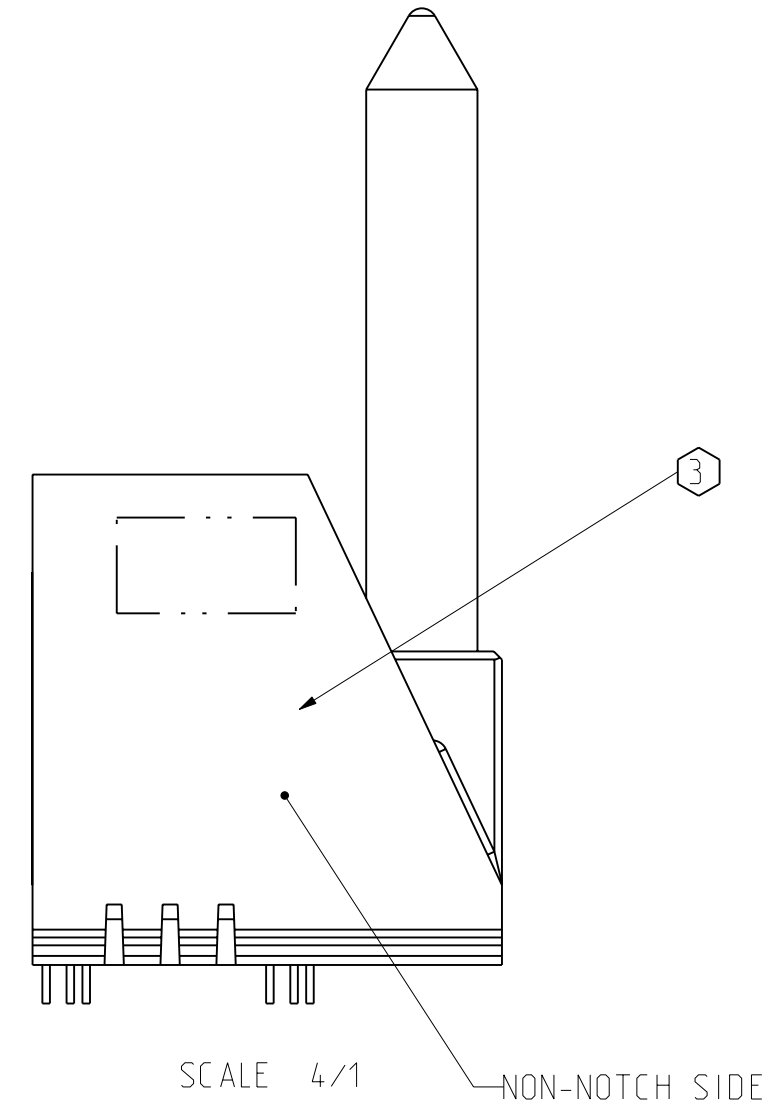
POLARIZING PIN LOCATION CODE (SEE TABLE 2)

**TABLE 1**

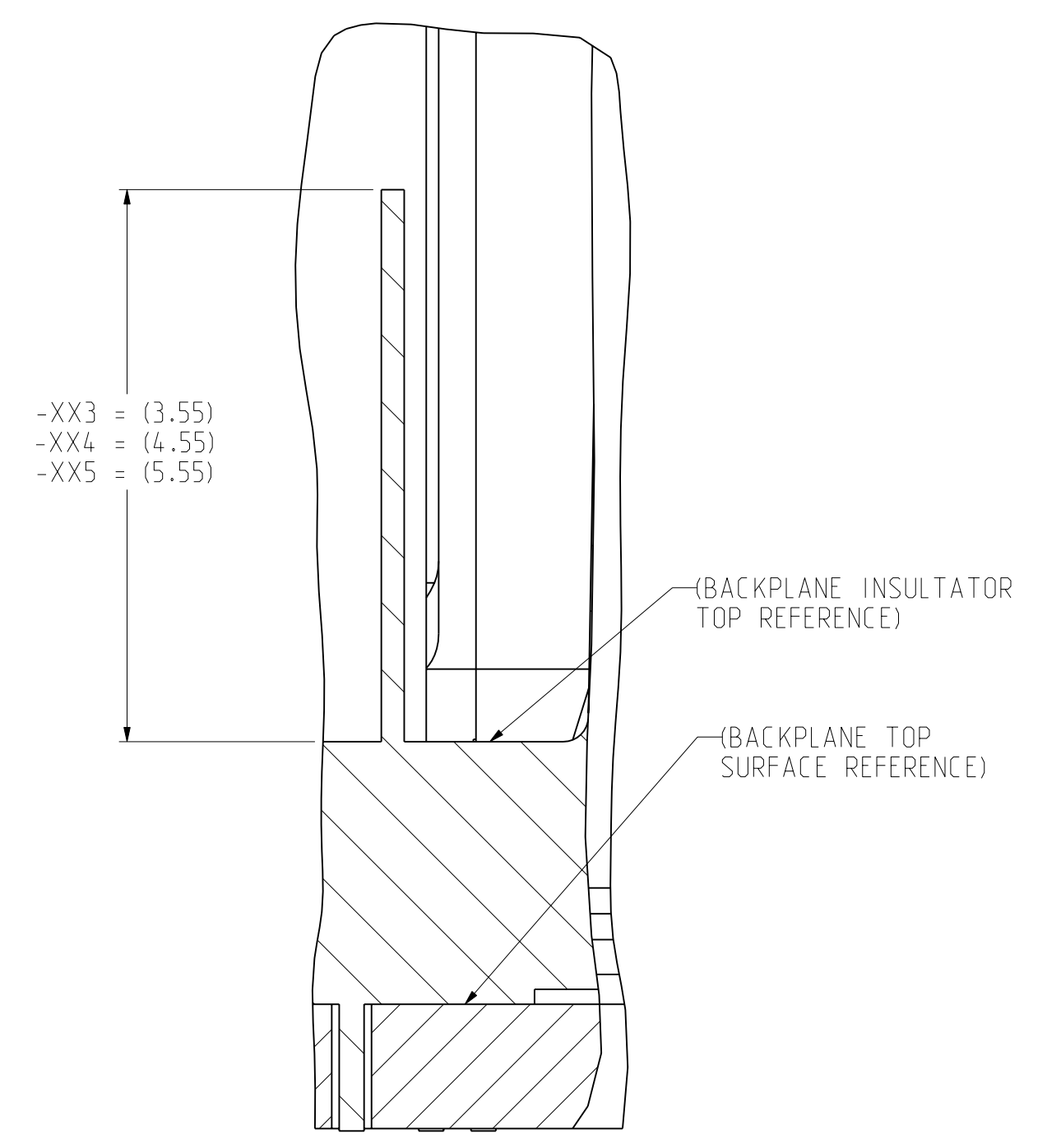
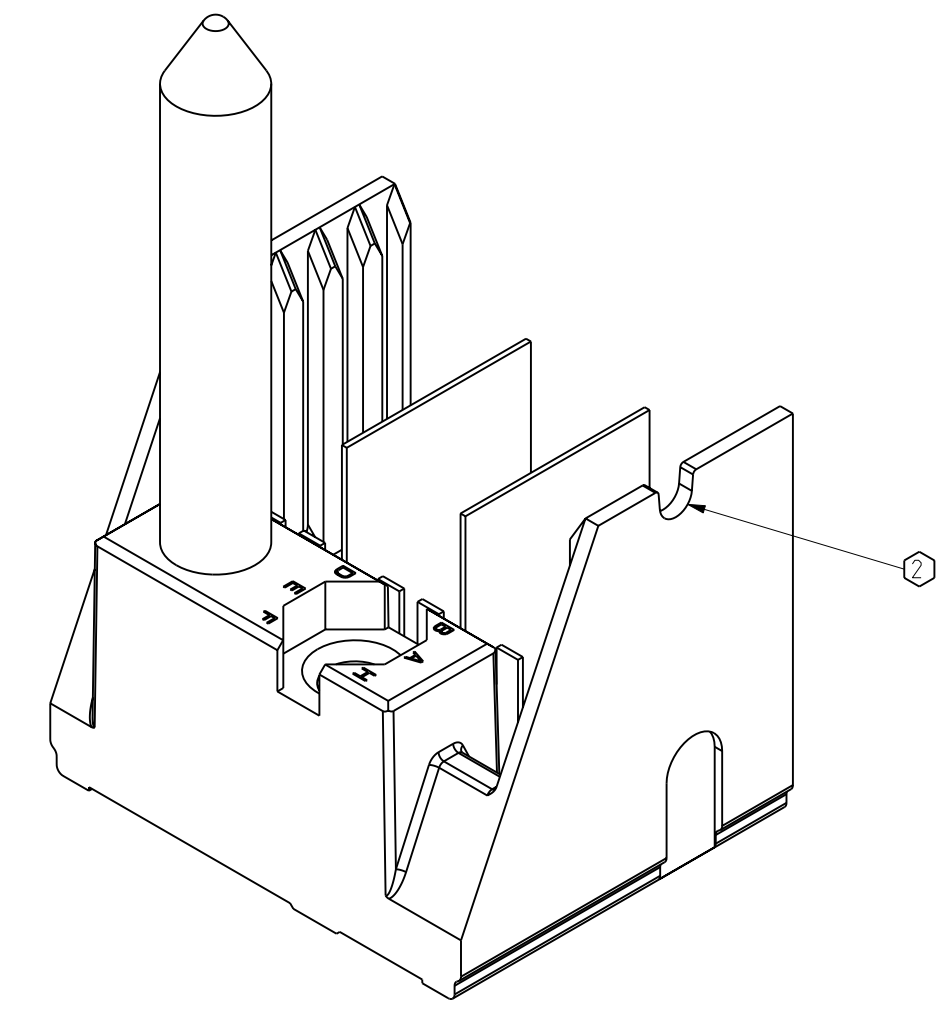
| ASSEMBLY PART NUMBER | K  | (L)     | P     | TOTAL NUMBER OF DIFFERENTIAL PAIRS |
|----------------------|----|---------|-------|------------------------------------|
| 348-5205-XXX         | 4  | (7.40)  | 15.53 | 15                                 |
| 348-5210-XXX         | 9  | (16.65) | 24.78 | 30                                 |
| 348-5225-XXX         | 24 | (44.40) | 52.53 | 75                                 |

**TABLE 2**

| PART NUMBER<br>348-52XX-(XXX) | -0XX | -AXX | -BXX | -CXX | -DXX | -EXX | -FXX | -GXX | -HXX |
|-------------------------------|------|------|------|------|------|------|------|------|------|
| POLARIZING PIN ORIENTATION    |      |      |      |      |      |      |      |      |      |



| ZONE | REV | SCR NUMBER        | DESCRIPTION   | BY         | DATE       | APPROVED |
|------|-----|-------------------|---|------------|------------|----------|
| ALL  | A   | BWOK-7U8KWS.VER01 | RELEASE TO PRODUCTION   | M.RECEPUTO | 03/10/2009 | J.DUNHAM |
|      | B   | CSAS-83KL5Z.VER01 | ADDED NEW PART NUMBERS FOR NEW PLATING CODES IN ASSEMBLY PART NUMBER ASSIGNMENT TREE. MODIFIED NOTE 4 AND 7. ADDED "NOT TOOLED" FOR 1.00 mm WIPE IN PART NUMBER TREE. | HCL-MH     | 03/16/2010 | C.SAMMIS |



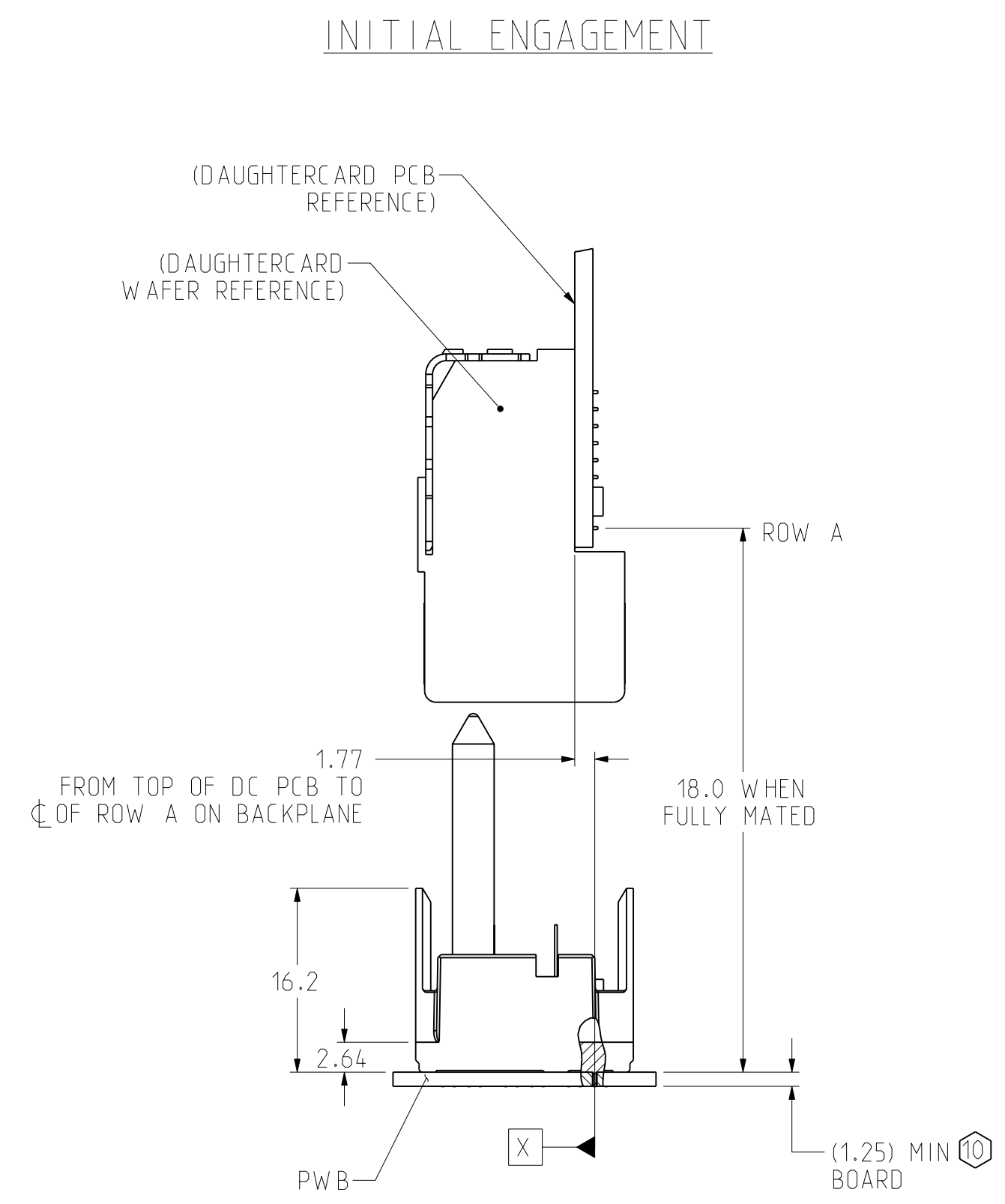
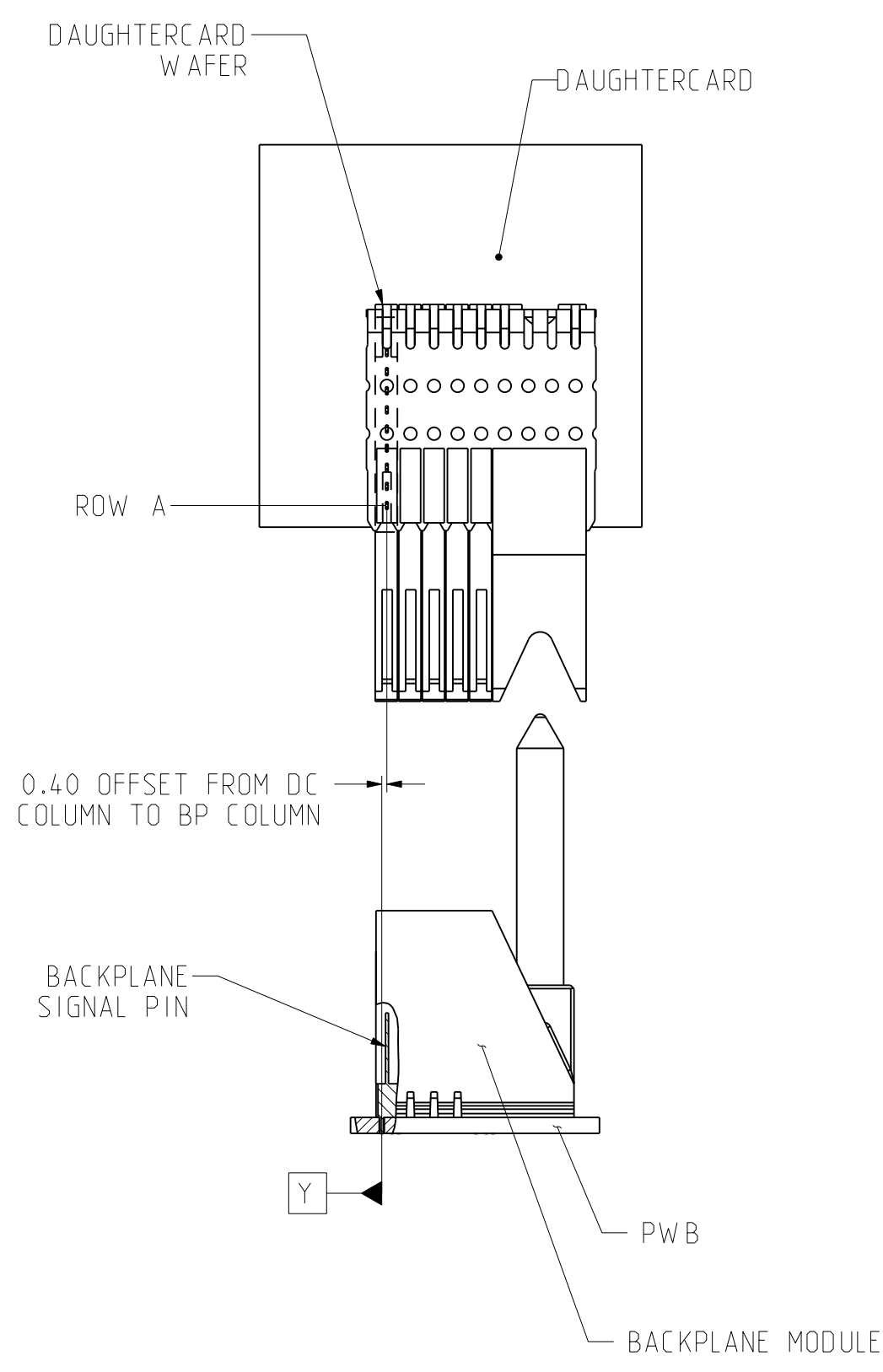
- IF 4TH DIGIT OF THE PART NUMBER IS 7 OR 8 OR L OR N (CUSTOM PART). DIGIT 5 THROUGH 10 DO NOT FOLLOW THE PARADIGM IN TABLE.
6. USE MATING GAUGE PART NUMBER 699-2241-000 AFTER INSERTION ONTO BOARD TO CHECK POSITION OF BLADES.
5. FOR REPAIR PROCEDURE FOR SIGNAL BLADE. SEE TB-2099.
- 9TH DIGIT OF PART NUMBER IDENTIFIES PLATING:  
735 - Ni SULFAMATE, STANDARD GOLD, LEADED  
732 - Ni SULFAMATE, HIGH GOLD, LEADED  
769 - Ni SULFAMATE, STANDARD GOLD, LEAD-FREE  
768 - Ni SULFAMATE, HIGH GOLD, LEAD-FREE  
804 - NANO Ni, STANDARD GOLD, LEADED  
803 - NANO Ni, HIGH GOLD, LEADED  
806 - NANO Ni, STANDARD GOLD, LEAD-FREE  
805 - NANO Ni, HIGH GOLD, LEAD-FREE
- PART MARKING AS FOLLOWS:  
LINE 1: "ATCS" AND DATECODE (ATCS YYWW).  
LINE 2: MODULE PART NUMBER (###-###-###).  
LINE 3: WORK ORDER NUMBER (#####), WHERE "\*" DENOTES MANUFACTURING LOCATION.
- NOTCH DESIGNATES "ROW A" SIDE OF SHROUD. NOTCH FEATURE ON OPPOSITE SIDE FROM PART MARKING.
1. REFER TO TB-2085 FOR GBX PRODUCT SPECIFICATIONS.
- NOTES:

| TOLERANCES   | DESIGN | 03/10/2009 | M.RECEPUTO | <b>Amphenol TCS</b><br>A Division of Amphenol Corporation<br>200 Innovative Way, Nashua, NH 03062 603.879.3000 |                              |
|--|--------|------------|------------|--|------------------------------|
| 0.0  | ±0.25  | DRAWN      | 03/10/2009 | M.RECEPUTO   | TITLE                        |
| 0.0  | ±0.13  | CHK        | 03/10/2009 | J.DUNHAM   | BP CONNECTOR ASSY, RIGHT POL |
| 0.000  | ± -    | APVD       | 03/10/2009 | J.DUNHAM   | GBX U-SERIES, 3 PAIR         |
| ANGLES   | ± -    |            |            | PART NO.   | SEE PART NUMBER TREE         |
| UNLESS OTHERWISE SPECIFIED DIMENSIONS ARE IN MM. DECIMAL MARKER IS A PERIOD. |        |            |            | DRAWING NO.  | C-348-5205-500               |
| INTERPRET PER ASME Y14.5M  |        |            |            | PROJ. TYPE   | Q1139-348-5205-500ASM        |
| CODE IDENT 31413   |        |            |            | PROJ. DRAWING  | C-348-5205-500               |
| CUSTOMER USE DRAWING   |        |            |            | SIZE   | D                            |
|  |        |            |            | SCALE  | 6/1                          |
|  |        |            |            | SHEET  | 1 OF 2                       |

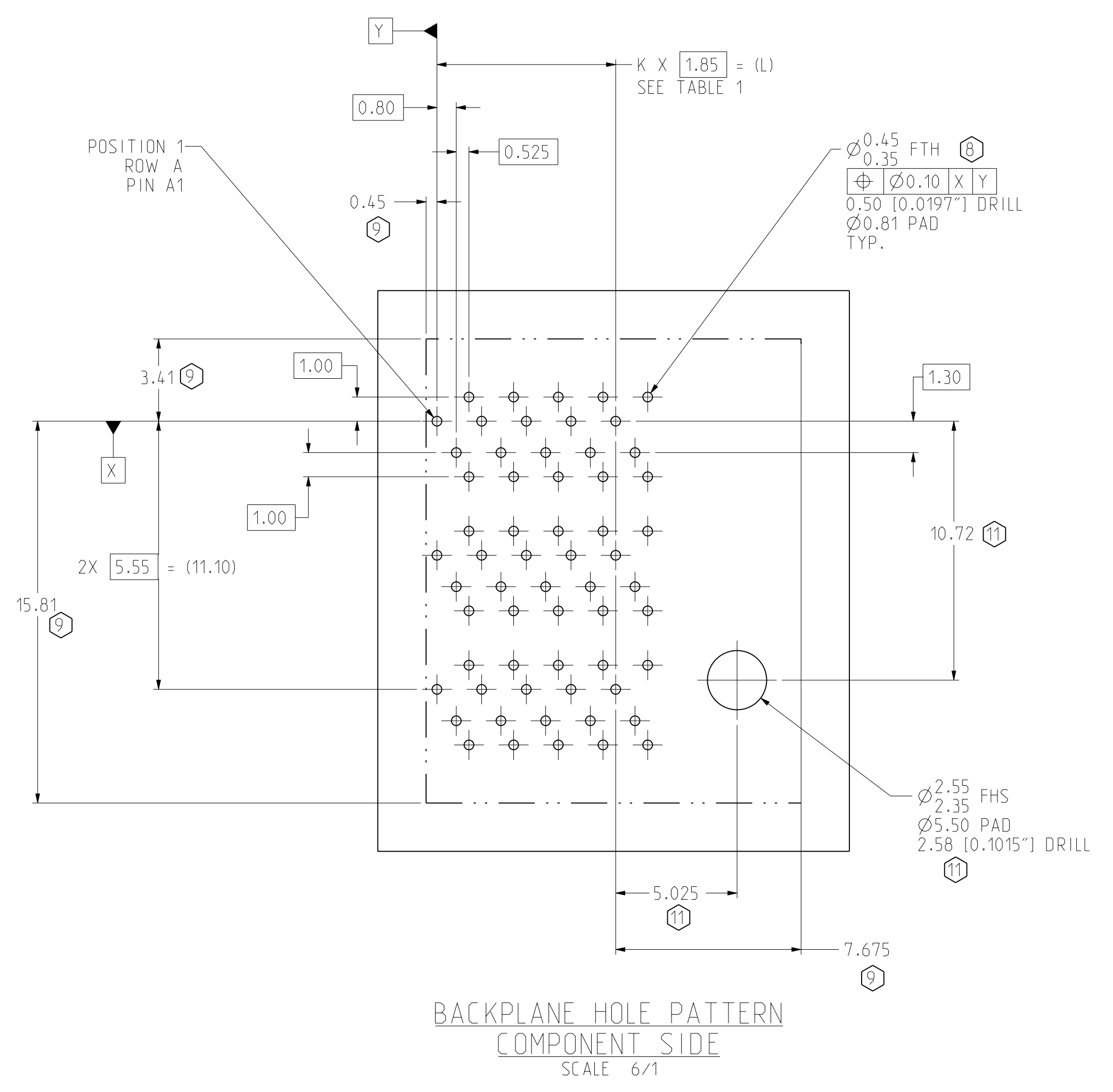
DRW NO. C-348-5205-500

SH 1 REV B

| ZONE | REV | SCR NUMBER | DESCRIPTION | BY | DATE | APPROVED |
|------|-----|------------|-------------|----|------|----------|
|      |     |            | SEE SHEET 1 |    |      |          |



**GbX DC WAFER TO GbX-U BP SHROUD**



**BACKPLANE HOLE PATTERN  
COMPONENT SIDE  
SCALE 6/1**

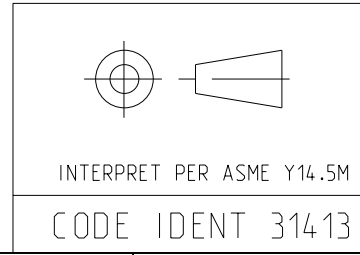
- ⑩ OPTIONAL HOLE LOCATION FOR GROUNDED PIN OR ADDITIONAL GUIDE PIN SUPPOR. FOR DC BOARD WEIGHT > 8 LBS.. REFER TO TB-2104 FOR PROPER GUIDE PIN SIZING.
- ⑩ FOR SHARED HOLE MIDPLANE APPLICATIONS MIN BOARD THICKNESS OF 4.00 REQUIRED.
- ⑨ SEE DOCUMENT 190-0006-000 FOR KEEPOUT ZONES.
- ⑧ STATED PAD SIZE MAY REQUIRE FILLETING. FOR DETAILED ROUTING GUIDELINES, SEE TB-2090.

NOTES:

| TOLERANCES | DESIGN | 03/10/2009               |
|------------|--------|--------------------------|
| 0.0        | ±0.25  | M.RECEPUTO               |
| 0.00       | ±0.13  | M.RECEPUTO               |
| 0.000      | ± -    | CHK 03/10/2009 J.DUNHAM  |
| ANGLES     | ± -    | APVD 03/10/2009 J.DUNHAM |

**Amphenol TCS**  
A Division of Amphenol Corporation  
200 Innovative Way, Nashua, NH 03062 603.879.3000

TITLE  
BP CONNECTOR ASSY, RIGHT POL  
GBX U-SERIES, 3 PAIR



UNLESS OTHERWISE SPECIFIED DIMENSIONS ARE IN MM. DECIMAL MARKER IS A PERIOD.

**CUSTOMER USE  
DRAWING**

|               |                       |       |        |
|---------------|-----------------------|-------|--------|
| PART NO.      | SEE PART NUMBER TREE  | REV   | N/A    |
| DRAWING NO.   | C-348-5205-500        | REV   | B      |
| PRO/E TYPE    | Q1139-348-5205-500ASM | SCALE | 4/1    |
| PRO/E DRAWING | C-348-5205-500        | SHEET | 2 OF 2 |

DRW NO. C-348-5205-500

SH 2 REV B