

**0.375" PITCH
SERIES #6
TRI-BARRIER**

PHYSICAL PROPERTIES

HOUSING MATERIAL: Polyamide
FLAMMABILITY: UL94V-0
COLOR: Black

TERMINAL

TERMINALS: Bright acid tin over copper alloy
SCREWS: #6-32 steel, zinc plating with clear chromate coating. Wire clamping screws standard. Binding head screw with undercut optional.

MECHANICAL

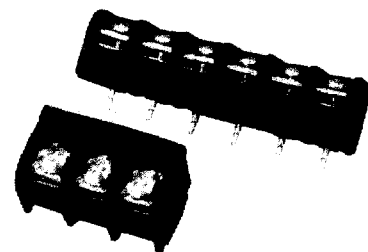
PITCH (TERMINAL SPACING): 0.375"
RECOMMENDED PCB HOLE Dia.: 1.8mm (.073")

ELECTRICAL PROPERTIES

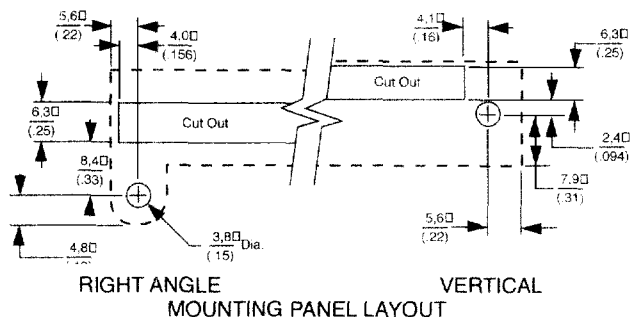
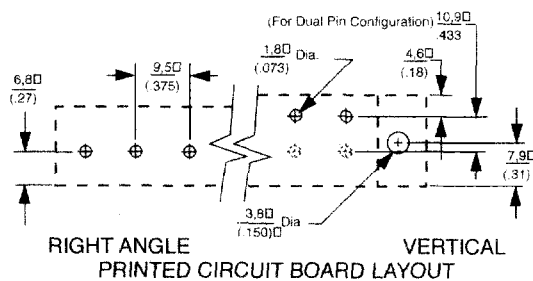
MAXIMUM CURRENT: 25A
OPERATING VOLTAGE: 300V
WIRE RANGE: 12-22 AWG

ENVIRONMENTAL PROPERTIES

OPERATING TEMPERATURE RANGE: 105°C max.



6PCV-03 & 6PCV-06



0.375" PITCH
SERIES #6
TRI-BARRIER

6 PCV-04-004

A **B** **C** **D**

ORDERING INFORMATION

A Screw Size Spacing
6 = #6-32 on .375" Centers

C No. of Circuits (Not positions)
02 through 30

B Terminal Style

- DBL** = Double Printed Circuit Pin
- PCR** = Printed Circuit, Right Angle
- PCV** = Printed Circuit Pin, Vertical
- STR** = Solder Turret, Right Angle
- STV** = Solder Turret, Vertical
- TBV** = Non Feed Thru (bottom covers required for all powered positions)
- WWR** = Solderless Wire Wrap, Right Angle
- WV** = Solderless Wire Wrap, Vertical

D Modifiers

Use table below.

Note: If modifier is -000 it may be omitted. (6PCV-06)

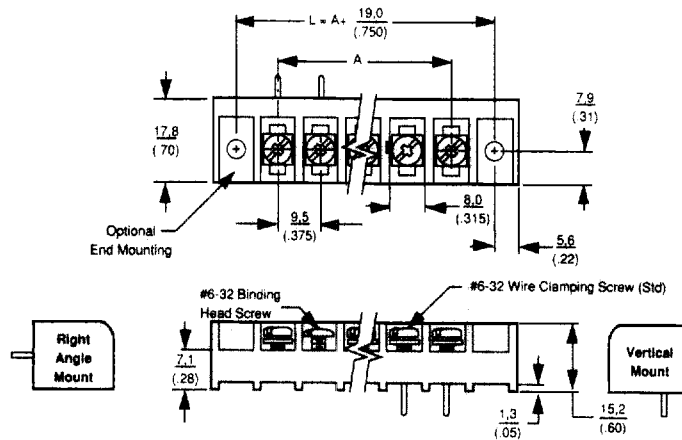


Phil-slot Head Slotted Head

Model	Modifier		Screw Style	Mounting Construction
	Slotted Head	Phil-slot Head		
DBL	000	006	Wire Clamp	No Mounting
	001	007	Binding Head	
PCV	000	006	Wire Clamp	No Mounting
	001	007	Binding Head	
	004	008	Wire Clamp	
	005	009	Binding Head	
PCR	000	006	Wire Clamp	No Mounting
	001	007	Binding Head	
	004	008	Wire Clamp	
	005	009	Binding Head	
STV	000	006	Wire Clamp	
	004	008	Wire Clamp	
WV	000	006	Wire Clamp	
	004	008	Wire Clamp	
STR	000	006	Wire Clamp	
	004	008	Wire Clamp	
WWR	000	006	Wire Clamp	
	004	008	Wire Clamp	
TBV	000	006	Wire Clamp	



**0.375" PITCH
SERIES #6
TRI-BARRIER**

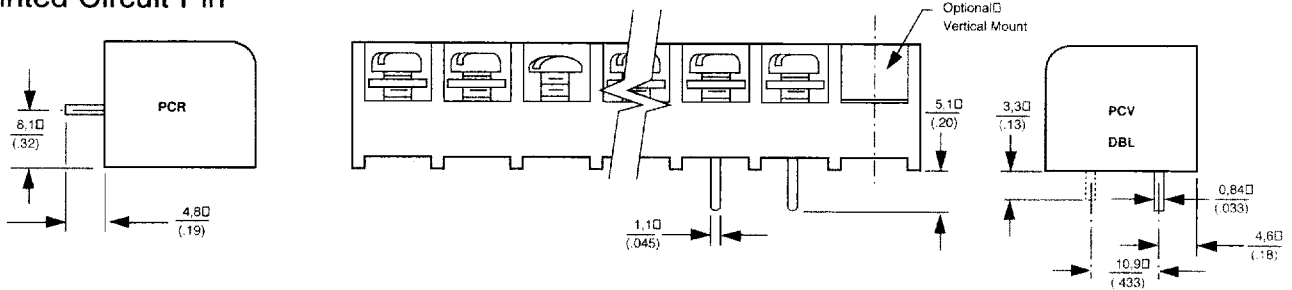


Dimensions

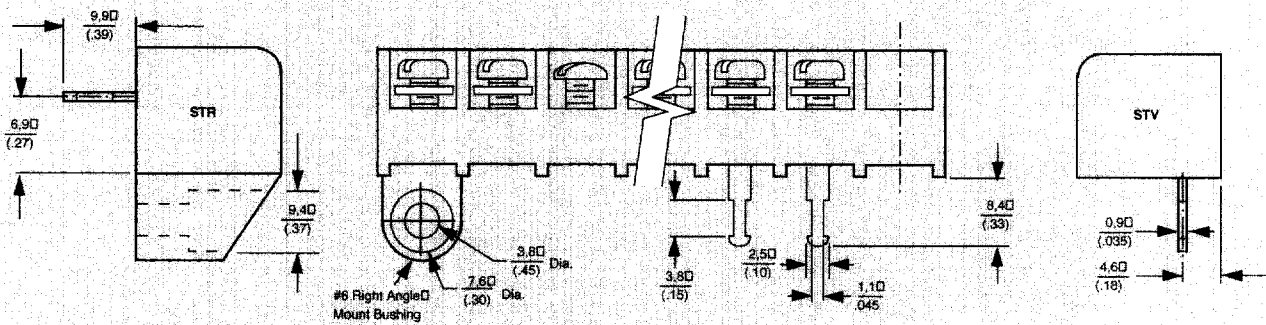
TERMINALS	A	TERMINALS	A
2	(.375) 9,5	17	(6.00) 152,4
3	(0.75) 19,1	18	(6.37) 161,9
4	(1.12) 28,6	19	(6.75) 171,4
5	(1.50) 38,1	20	(7.12) 181,9
6	(1.87) 47,6	21	(7.50) 190,5
7	(2.25) 57,1	22	(7.87) 200,0
8	(2.62) 66,7	23	(8.25) 209,5
9	(3.00) 76,2	24	(8.62) 219,1
10	(3.37) 85,7	25	(9.00) 228,6
11	(3.75) 95,2	26	(9.38) 238,1
12	(4.12) 104,8	27	(9.75) 247,7
13	(4.50) 114,3	28	(10.13) 257,2
14	(4.87) 123,8	29	(10.50) 266,7
15	(5.25) 133,3	30	(10.88) 276,2
16	(5.62) 142,9		

0.375" PITCH SERIES #6 TRI-BARRIER

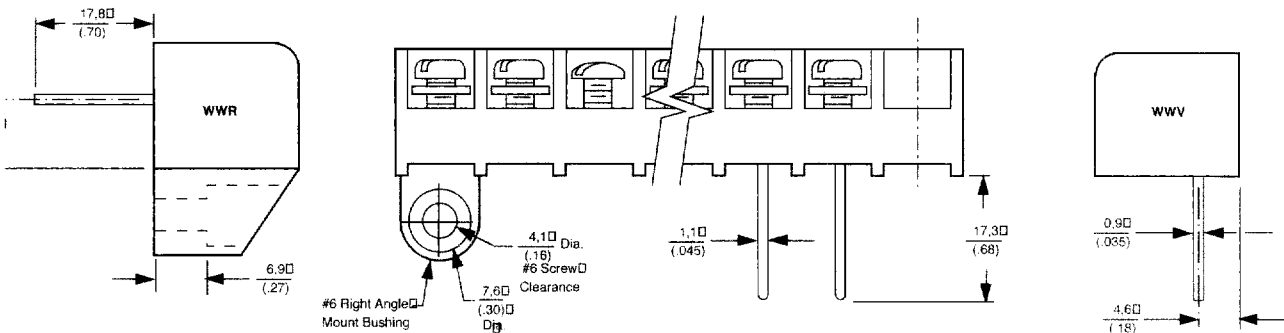
Printed Circuit Pin



Solder Turret



Wire Wrap



Non-Feed Thru

